



## Delta-Force Series Race Mufflers

Born and bred on the race track, Delta-Force Race Mufflers represent the ultimate in high-tech exhaust technology. Rugged cases are 16 gauge thickness and are MIG welded. Mufflers meet or exceed most track decibel requirements and feature all-steel construction with precisely placed deflectors which split noise without horsepower reduction.

### 10 Series

- Compact, Single Chamber Design
- Noticeable Sound Reduction Vs. Open Headers

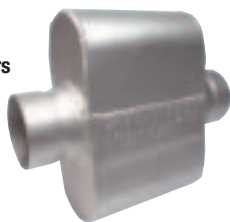
### 30 Series

- Aggressive Performance Tone
- Moderate Interior Resonance

### 40 Series

- The Original Flowmaster Sound
- Performance Tone
- Noticeable Interior Resonance Varies With RPM

**Note:** Dimensions are subject to change without notice.



### 3" Thick By 8" Wide

#### 10 Series, 5.50" Case Length

**Part No.** Description  
FL0325108 .....2.50" In/Out, 11.50" Total Length



### 4" Thick By 8" Wide

#### 40 Series, 9.00" Case Length

**Part No.** Description  
FL0435408 .....3.50" In/Out, 15.00" Total Length



### 4" Thick By 9.75" Wide

#### 10 Series, 6.25" Case Length

**Part No.** Description  
FL09430109 .....3.00" In/Out, 12.25" Total Length  
FL09435109 .....3.50" In/Out, 12.25" Total Length



### 10 Series, 10.00" Case Length

**Part No.** Description  
FL09430119 .....3.00" In/Out, 16.00" Total Length  
FL09435119 .....3.50" In/Out, 16.00" Total Length



### 40 Series, 13.00" Case Length

**Part No.** Description  
FL09430409 .....3.00" In/Out, 19.00" Total Length



### 40 Series, 13.00" Case Length

**Part No.** Description  
FL09430439 .....3.00" In/Out, 19.00" Total Length



Donnie Roberts

### 5" Thick By 10" Wide

#### 40 Series, 13.00" Case Length

**Part No.** Description  
FL0953540-10 .....3.50" In/Out, 19.00" Total Length



### 5" Thick By 12" Wide

#### 10 Series, 7.50" Case Length

**Top Ten® Muffler**  
**Part No.** Description  
FL0954010-12 .....4.00" In/Out, 13.50" Total Length



### 30 Series, 14.00" Case Length

**Top Ten® Muffler**  
**Part No.** Description  
FL054030-12 .....4.00" In/Out, 20.00" Total Length



### 30 Series, 17.00" Case Length

**Top Ten® Muffler**  
**Part No.** Description  
FL053531-12 .....3.50" In/Out, 23.00" Total Length  
FL054031-12 .....4.00" In/Out, 23.00" Total Length



### 6" Thick By 12" Wide

#### 40 Series, 14.00" Case Length

**Top Ten® Muffler**  
**Part No.** Description  
FL0965040-12 .....5.00" In/Out, 20.00" Total Length



## Outlaw Series Muffler FL015430

Racing Outlaw muffler has a round case and fits small spaces. Sound reduction is minimal so muffler should be used when no specific decibel limits are established.



Part No.	Inlet/Outlet	Case Dia.	Case Length
FL015430	3.00"	4.00"	16.75"

## Force II Scavenger Series "Y" Collectors

Designed for single exhaust systems.

Part Number	Primary Size (Slip Fit)	Outlet Size (Final)	Length
FLOY214300	2-1/4"	3"	17-1/2"
FLOY250300	2-1/2"	3"	16-1/2"
FLOY250350	2-1/2"	3-1/2"	17-1/2"
FLOY300350	3"	3-1/2"	17-1/2"
FLOY300400	3"	4"	17-1/2"
FLOY350400	3-1/2"	4"	16-1/2"
FLOY350500	3-1/2"	5"	16-1/2"



**Note:** Do not cut "Y" Collector; it may affect power output.



Brook Brasington

Photos By: John Berglund



## Stretdampr Harmonic Balancers

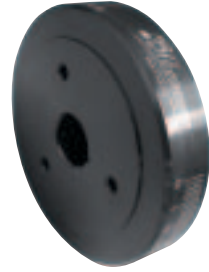
An economical alternative to the stock damper when an SFI-approved damper is not required. Extends crankshaft and bearing life while increasing power and torque. Stretdampr has timing marks from 0° to 40° for easy ignition timing setting and may be painted to match the engine.



Part No.	Engine	Balance	Dia.	Weight
<b>Small Block Chevy</b>				
FLU670100	262-350	Internal	6-7/8"	10.4 lbs.
FLU790100	400	External	7-3/16"	11.0 lbs.
<b>Small Block Ford</b>				
FLU620200	289-351W, 351C, 4-Bolt	External	6-1/4"	11.0 lbs.

## SFI- Approved Harmonic Dampers

The original Fluidampr. Race proven, SFI-approved steel balancer requires no service or maintenance and can make more horsepower, run more consistently and maintain the longest possible crankshaft and bearing life. The engine only feels 2/3 of the rotating weight of the damper due to its unique construction. Black zinc chromate finished with timing marks from 0° to 50°, 90°, 180° and 270°.



Part No.	Engine	Balance	Dia.	Weight
<b>Small Block Chevy</b>				
FLU620101	262-350	Internal	6-1/4"	7.9 lbs.
FLU720101	262-350	Internal	7-1/4"	12.2 lbs.
FLU720111	400	External	7-1/4"	14.0 lbs.
<b>Small Block Ford</b>				
FLU650201	289-351W, 351C, SVO 3-Bolt	Internal	6-5/8"	10.3 lbs.
FLU650211	289-351W, 351C, 4-Bolt	External	6-5/8"	12.9 lbs.



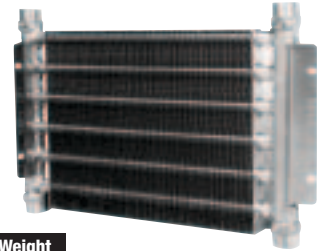
## Dwarf Car Radiator DUNFHP13-34311-DWF

All aluminum, furnace-brazed radiator uses no epoxy. High performance downflow style radiator is durable and weighs just 6 lbs. Radiator has 38mm tubes, 1" inlet and outlet, billet filler neck and is 13" W x 14" H x 1.59".



## Legends/Dwarf Car Engine Oil Cooler DUN30316

An ideal cooler for cars with engine oil circulating to the gear box and clutch pack, where it is subject to heat buildup and quicker breakdown.

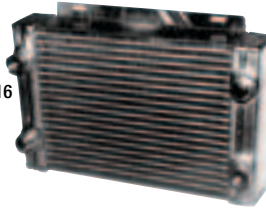


Dimensions	Fittings	Weight
16" x 10-1/2" x 1"	Four 1/2" FNPT	2.5 lb.

## Therm-Hx™ Engine Oil Coolers

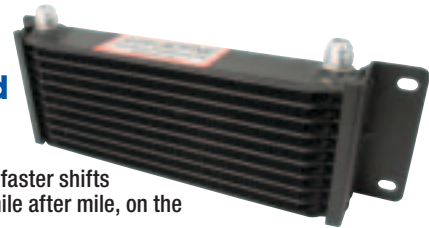
DUN30416

Fluidyne Oil-Air Engine Oil Coolers are brazed with the Therm-Hx™ process for excellent oil cooling and durability.



## Oil-Air Transmission And Rear End Coolers

Plate-fin coolers keep gear lubricants cool for faster shifts and greater reliability mile after mile, on the track or off the road.

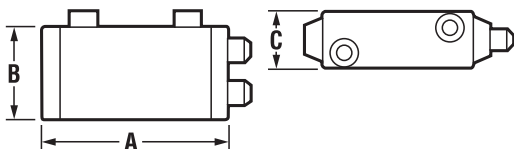


Part No.	Description	Dimensions			Fittings	Weight Lbs.
		A	B	C		
DUN30416	1-Pass	14.75"	6.25"	2.75"	Two -12AN, Two 1/2" NPT	6.5
DUN30417	2-Pass	14.75"	6.25"	2.75"	Two -12AN, One 1/2" NPT	6.5
DUN30616	1-Pass	14.75"	9.25"	3.00"	Two -12AN, Two 1/2" NPT	9.75
DUN30617	1-Pass	14.75"	9.25"	3.00"	Two -12AN, One 1/2" NPT	9.75
DUN30618	1-Pass	21.00"	5.875"	3.00"	Two -12AN, One -6AN, One 3/8" FNPT	12.00

Part No.	Dimensions			Fittings
	A	B	C	
DUN30110	11.00"	4.00"	2.00"	Two -8AN
DUN30115	11.00"	6.00"	2.00"	Two -8AN
DUN30120	11.00"	8.00"	2.00"	Two -10AN
DUN30216	14.75"	3.00"	3.00"	Two 1/2" FNPT

## Dimension And Fitting Location

### Heat Exchangers And Oil Coolers Tech



Dimensions listed do not include inlet/outlet fittings. Generally, "A" and "B" are length and height respectively, while "C" is depth, although heat exchangers may be mounted any way they fit in the vehicle.



Rocky Wilson

Photo By: SRA

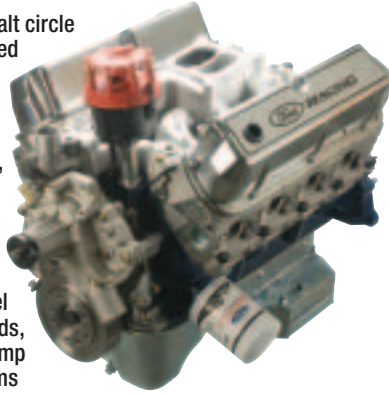


**RACING**  
PERFORMANCE PARTS

## 347 Cu. In. Sealed Race Engine

### FRDM6007-S347JR

Developed for dirt and asphalt circle track racing, the S347JR sealed racing engine meets the approval of the ACT (American Canadian Tour) and is designed to compete head-to-head against the GM "603" engine. The S347JR has 350 HP @ 5500 RPM and 400 ft./lbs. of torque @ 4,000 RPM, uses a 302 "Boss" racing block with a SCAT forged steel crankshaft and connecting rods, forged Mahle pistons, rear sum circle track oil pan, Comp Cams hydraulic roller camshaft, MSD distributor, X306 aluminum heads and Edelbrock Performer RPM Air Gap manifold. Carburetor, flywheel and exhaust headers are not included.



## 351 Siamese Bore Wet Sump Block

### FRDM6010-BOSS35195

High strength cast iron block has nodular iron, 4-bolt main caps on journals 2, 3, 4 and 5, wet sump oiling, 351 Cleveland main bearing sizing and can be bored and stroked to yield up to 454 cu. in.



## FR Boss 302 Block

### FRDM6010-BOSS302

All new block can accommodate up to 363 cu. in. Splayed, nodular iron four-bolt main caps on journals 2, 3 and 4, screw-in, O-ring sealed freeze plugs, 1/2" head bolts and a one-piece rear main seal make the block stronger than the original. The deck height is 8.2".



## Plug And Dowel Kits

**Part No.** **Description**  
FRDM6026-A302 ..... 289-351W, Includes Dowels And Plugs For FRDM6010-A4 Or Production V-8's

FRDM6026-B302 ..... 289-351W, 351C, Threaded Freeze Plug Kit For All Small Block V-8's. Does Not Include Dowels.

FRDM6026-S351 ..... Camshaft Plug For Ford Racing 302/351 Blocks



## Oil Gallery Restrictor Kits

Increases oil to the main bearings by restricting oil flow to the top of the engine.

**Part No.** **Description**  
FRDM6799-A302 ..... Oil Restrictors For 289-302-351W  
FRDM6799-R351 ..... Oil Restrictors For 351 Ford M6010-R351/R352/S351/V351/W351



## "Sportsman" Short Track Cast Iron Cylinder Head FRDM6049-N351

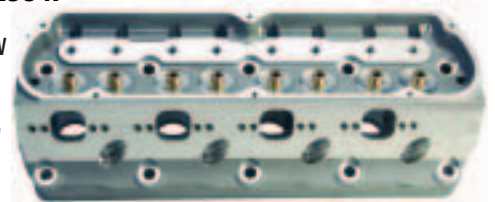
Ford 302-351W high-flow, cast iron cylinder head has large, 195cc intake and 78cc exhaust ports and 64cc combustion chambers. Machined for 2.02" intake and 1.60" exhaust valves, head is approved for NASCAR Late Model Stock, I.M.C.A., D.I.R.T., and most other stock car sanctioning bodies. Sold individually as bare castings.



## "Z" Aluminum Cylinder Head

### FRDM6049-Z304P

Engineered for serious 302-351W racing use, bare "Z" aluminum heads have large, 204cc intake and 85cc exhaust runners and are offered as bare, fully CNC-ported castings. Heads have high ports, 20° valve angle, 63cc combustion chambers and manganese-bronze valve guides. CNC-porting provides an approximate 10% increase in air flow and requires a competition valve job, bowl blending, roller rocker arms, guide plates and screw-in studs. Sold individually.



Brennan Bowen

Photo By: John Berglund



Eddie Hoffman

Photos By: Steve Datema



**RACING**  
PERFORMANCE PARTS

## 9mm Spark Plug Wire Sets

Wire wound core provides low resistance and minimal spark loss. Silicone insulation and boots protect wire from high temperatures, fuel, oil and solvents. Choice of blue, red or black.



Description	Blue Part No.	Red Part No.	Black Part No.
SB Ford 302/351W Engine, 45° Boots	FRDM12259-C301	FRDM12259-R301	FRDM12259-M301
Universal V6/V8, 45° Boots*	FRDM12259-C302	-	FRDM12259-M302

\* Universal must be cut to length and ends added.

## Roller Timing Chain Sets

Ford Racing True Roller Timing Chain Sets provide maximum performance and longevity. All crank sprockets have nine different index positions for easy camshaft degreasing.

Part No.	Description
FRDM6268-A302	..... 289-351W, Iron Cam Sprocket
FRDM6268-B302	..... 289-351W, Steel Cam Sprocket



## Camshaft Thrust Plate FRDM6269-A351

Heavy duty steel replacement thrust plate fits all 302 Ford Racing and 351W engines. For use with steel cam sprocket.



## Fuel Pump Eccentrics

Part No.	Description
FRDM6287-B302	..... 289-351W, 3/8" Bolt
FRDM6287-C302	..... 289-351W, 7/16" Bolt



## Oil Pump Drive Shafts

Heavy duty centerless ground chrome moly Ford Racing shafts add a high degree of reliability.

Part No.	Description
FRDM6605-A341*	..... 351W, All 351 SVO
FRDM6605-B302	..... 289-302, All

\* Will not fit EEC-IV computer controlled engines.



## Racing Oil Filter FRDCM6731-FL1A

Up to 50% more filtering capacity than standard filters. Replaces Motorcraft FL1A.



## Oil Filter Adapter FRDM6880-A50

Adapter threads into the engine block and rotates the oil filter toward the front of engine for clearance in engine swaps and chassis modifications. Fits most Ford engines using Motorcraft FL-1A oil filter.



Oil Filter Not Included

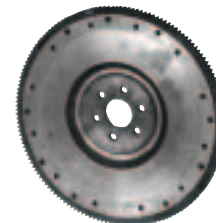
## SB Ford Mini Starter FRDM11000-B51

Lighter and more compact for added header clearance, starter weighs 5 lbs. less than pre-1989 production units and fits all 289, 302, 351W and 351C, except those with 164-tooth flywheel and manual transmission. Battery cables and instructions included. Must use fenderwell solenoid.



## Flywheel FRDM6375-B302

Stock replacement flywheel is engineered for 1981-up externally balanced 302 engines and includes a 50 oz. balance weight.



## Roller Pilot Bearing FRDM7600-A

Bearing is pre-greased and ready to install in any Ford 289-351W engine.



## Ford 9" "Daytona" Pinion Bearing Retainer FRDM4614-B

Heavy duty nodular iron retainer is designed for Ford 9" rears and uses large rear and small front pinion bearings.



## Ford 9" "Benda" Pinion Seal FRDM4676-A111

Viton pinion seal offers exceptional durability.



## "Ford Racing" Fender Cover FRDM1822-A2

Fender cover is 27" x 36" and protects from scratches, chemicals and fluids. Cover has a blue oval Ford Racing logo.



Paul Zelmer

Photo By: John Berglund



Kris Patterson Jr.

Photo By: Steve Datema



Terry Bogusz

Photo By: WBVS Photos

## Series 8000 Push-Lite Race Hose Ends

Made from lightweight aluminum with an attractive black anodized finish, Push-Lite Race Hose Ends have a barbed end that combines ease of assembly and a leakproof seal.

Part No.	Hose Size
<b>Straight</b>	
FRG200104-BL	-4
FRG200106-BL	-6
FRG200108-BL	-8
FRG200110-BL	-10
FRG200112-BL	-12
FRG200116-BL	-16
<b>30°</b>	
FRG203006-BL	-6
FRG203008-BL	-8
FRG203010-BL	-10
FRG203012-BL	-12
FRG203016-BL	-16
<b>45°</b>	
FRG204504-BL	-4
FRG204506-BL	-6
FRG204508-BL	-8
FRG204510-BL	-10
FRG204512-BL	-12
FRG204516-BL	-16
<b>60°</b>	
FRG206006-BL	-6
FRG206008-BL	-8
FRG206010-BL	-10
FRG206012-BL	-12
FRG206016-BL	-16
<b>90°</b>	
FRG209004-BL	-4
FRG209006-BL	-6
FRG209008-BL	-8
FRG209010-BL	-10
FRG209012-BL	-12
FRG209016-BL	-16
<b>120°</b>	
FRG212006-BL	-6
FRG212008-BL	-8
FRG212010-BL	-10
FRG212012-BL	-12
FRG212016-BL	-16
<b>150°</b>	
FRG215006-BL	-6
FRG215008-BL	-8
FRG215010-BL	-10
FRG215012-BL	-12
FRG215016-BL	-16
<b>180°</b>	
FRG218006-BL	-6
FRG218008-BL	-8
FRG218010-BL	-10
FRG218012-BL	-12
FRG218016-BL	-16



Colin Thirby

Photo By: John Berglund

## Series 2000 Pro-Flow Hose Ends

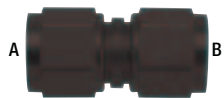
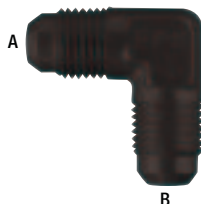
Pro-Flow Hose Ends utilize a "single nipple", which allows the socket to draw the hose over a long tapered single nipple, effectively sealing the hose between the inside of the socket and the outside of the nipple. Hose ends are easily re-used because there is no sliver of cut hose to remove before installing the fitting on a new length of hose. Fittings have a black anodized finish.

Part No.	Hose Size
<b>Straight</b>	
FRG220104-BL	-4
FRG220106-BL	-6
FRG220108-BL	-8
FRG220110-BL	-10
FRG220112-BL	-12
FRG220116-BL	-16
<b>30°</b>	
FRG223004-BL	-4
FRG223006-BL	-6
FRG223008-BL	-8
FRG223010-BL	-10
FRG223012-BL	-12
FRG223016-BL	-16
<b>45°</b>	
FRG224504-BL	-4
FRG224506-BL	-6
FRG224508-BL	-8
FRG224510-BL	-10
FRG224512-BL	-12
FRG224516-BL	-16
<b>60°</b>	
FRG226004-BL	-4
FRG226006-BL	-6
FRG226008-BL	-8
FRG226010-BL	-10
FRG226012-BL	-12
FRG226016-BL	-16
<b>90°</b>	
FRG229004-BL	-4
FRG229006-BL	-6
FRG229008-BL	-8
FRG229010-BL	-10
FRG229012-BL	-12
FRG229016-BL	-16
<b>120°</b>	
FRG231204-BL	-4
FRG231206-BL	-6
FRG231208-BL	-8
FRG231210-BL	-10
FRG231212-BL	-12
FRG231216-BL	-16
<b>150°</b>	
FRG231504-BL	-4
FRG231506-BL	-6
FRG231508-BL	-8
FRG231510-BL	-10
FRG231512-BL	-12
FRG231516-BL	-16
<b>180°</b>	
FRG231804-BL	-4
FRG231806-BL	-6
FRG231808-BL	-8
FRG231810-BL	-10
FRG231812-BL	-12
FRG231816-BL	-16



## AN Flare Adapters

Part No.	"A" Dash Size	"B" Dash Size
<b>Aluminum Union</b>		
FRG481503-BL	-3	-3
FRG481504-BL	-4	-4
FRG481506-BL	-6	-6
FRG481508-BL	-8	-8
FRG481510-BL	-10	-10
FRG481512-BL	-12	-12
FRG481516-BL	-16	-16
<b>Aluminum 90° Union</b>		
FRG482103-BL	-3	-3
FRG482104-BL	-4	-4
FRG482106-BL	-6	-6
FRG482108-BL	-8	-8
FRG482110-BL	-10	-10
FRG482112-BL	-12	-12
FRG482116-BL	-16	-16
<b>Aluminum Male Reducer</b>		
FRG491902-BL	-3	-4
FRG491906-BL	-4	-6
FRG491912-BL	-6	-8
FRG491913-BL	-4	-10
FRG491914-BL	-6	-10
FRG491915-BL	-8	-10
FRG491916-BL	-4	-12
FRG491918-BL	-6	-12
FRG491919-BL	-8	-12
FRG491920-BL	-10	-12
FRG491922-BL	-10	-16
FRG491923-BL	-12	-16
<b>Aluminum Female Swivel</b>		
FRG496103-BL	-3	-3
FRG496104-BL	-4	-4
FRG496106-BL	-6	-6
FRG496107-BL	-6	-8
FRG496108-BL	-8	-8
FRG496109-BL	-8	-10
<b>Aluminum 45° Female Coupler</b>		
FRG496216-BL	-16	-16
<b>Aluminum Swivel Reducer</b>		
FRG497204-BL	-3	-4
FRG497206-BL	-4	-6
FRG497208-BL	-6	-8
FRG497210-BL	-6	-10
FRG497211-BL	-8	-10
FRG497212-BL	-8	-12
FRG497213-BL	-10	-12
FRG497216-BL	-10	-16
FRG497217-BL	-12	-16
FRG497218-BL	-4	-8
<b>Aluminum Swivel Flare Expander</b>		
FRG497304-BL	-3	-4
FRG497306-BL	-4	-6
FRG497308-BL	-6	-8
FRG497310-BL	-8	-10
FRG497312-BL	-10	-12
FRG497320-BL	-16	-20



Part No.	"A" Dash Size	"B" Dash Size	"C" Dash Size
<b>Aluminum Tee, Female Swivel On Side</b>			
FRG498201-BL	-3	-3	-3
FRG498202-BL	-4	-4	-4
FRG498203-BL	-6	-6	-6
FRG498204-BL	-8	-8	-8
<b>Aluminum Tee</b>			
FRG482403-BL	-3	-3	-3
FRG482404-BL	-4	-4	-4
FRG482406-BL	-6	-6	-6
FRG482408-BL	-8	-8	-8
FRG482410-BL	-10	-10	-10
FRG482412-BL	-12	-12	-12
FRG482416-BL	-16	-16	-16



## AN Flare Adapters - Continued

Part No.	"A" Dash Size
<b>Aluminum Flare Cap</b>	
FRG492903-BL	-3
FRG492904-BL	-4
FRG492906-BL	-6
FRG492908-BL	-8
FRG492910-BL	-10
FRG492912-BL	-12
FRG492916-BL	-16
<b>Aluminum Flare Plug</b>	
FRG480603-BL	-3
FRG480604-BL	-4
FRG480606-BL	-6
FRG480608-BL	-8
FRG480610-BL	-10
FRG480612-BL	-12
FRG480616-BL	-16
FRG480620-BL	-20
<b>Aluminum Tube Nut</b>	
FRG481803-BL	-3
FRG481804-BL	-4
FRG481806-BL	-6
FRG481808-BL	-8
FRG481810-BL	-10
<b>Aluminum Tube Sleeve</b>	
FRG481903-BL	-3
FRG481904-BL	-4
FRG481906-BL	-6
FRG481908-BL	-8
FRG481910-BL	-10

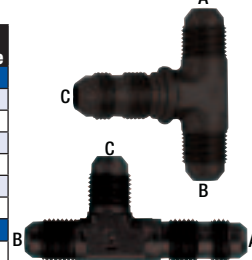


## AN Flare Bulkhead Adapters

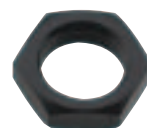
Part No.	"A" Dash Size	"B" Dash Size
<b>Aluminum Straight Bulkhead</b>		
FRG483203-BL	-3	-3
FRG483204-BL	-4	-4
FRG483206-BL	-6	-6
FRG483208-BL	-8	-8
FRG483210-BL	-10	-10
FRG483212-BL	-12	-12
FRG483216-BL	-16	-16
FRG483220-BL	-20	-20
<b>Aluminum 45° Bulkhead</b>		
FRG483703-BL	-3	-3
<b>Aluminum 90° Bulkhead</b>		
FRG483303-BL	-3	-3
FRG483304-BL	-4	-4
FRG483306-BL	-6	-6
FRG483308-BL	-8	-8
FRG483310-BL	-10	-10
FRG483312-BL	-12	-12
FRG483316-BL	-16	-16



Part No.	"A" Dash Size	"B" Dash Size	"C" Dash Size
<b>Aluminum Bulkhead Tee On-The-Side</b>			
FRG483403-BL	-3	-3	-3
FRG483404-BL	-4	-4	-4
FRG483406-BL	-6	-6	-6
FRG483408-BL	-8	-8	-8
FRG483410-BL	-10	-10	-10
FRG483412-BL	-12	-12	-12
<b>Aluminum Bulkhead Tee On-The-Run</b>			
FRG480403-BL	-3	-3	-3

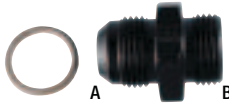


Part No.	"A" Dash Size
<b>Aluminum Bulkhead Nut</b>	
FRG492403-BL	-3
FRG492404-BL	-4
FRG492406-BL	-6
FRG492408-BL	-8
FRG492410-BL	-10
FRG492412-BL	-12
FRG492416-BL	-16
FRG492420-BL	-20



## AN Flare To ORB Adapters

Part No.	"A" Dash Size	"B" SAE Size
<b>Aluminum O-Ring Boss</b>		
FRG495124-BL	-4	3/8"-24 (-3)
FRG495125-BL	-4	7/16"-20 (-4)
FRG495110-BL	-4	9/16"-18 (-6)
FRG495111-BL	-4	3/4"-16 (-8)
FRG495112-BL	-4	7/8"-14 (-10)
FRG495100-BL	-6	9/16"-18 (-6)
FRG495101-BL	-6	3/4"-16 (-8)
FRG495113-BL	-6	7/8"-14 (-10)
FRG495114-BL	-6	1-1/16"-12 (-12)
FRG495102-BL	-8	9/16"-18 (-6)
FRG495103-BL	-8	3/4"-16 (-8)
FRG495104-BL	-8	7/8"-14 (-10)
FRG495115-BL	-8	1-1/16"-12 (-12)
FRG495116-BL	-8	1-5/16"-12 (-16)
FRG495105-BL	-10	3/4"-16 (-8)
FRG495106-BL	-10	7/8"-14 (-10)
FRG495107-BL	-10	1-1/16"-12 (-12)
FRG495117-BL	-10	1-5/16"-12 (-16)
FRG495122-BL	-12	3/4"-16 (-8)
FRG495108-BL	-12	7/8"-14 (-10)
FRG495109-BL	-12	1-1/16"-12 (-12)
FRG495118-BL	-12	1-5/16"-12 (-16)
FRG495120-BL	-16	1-1/16"-12 (-12)
FRG495119-BL	-16	1-5/16"-12 (-16)
FRG495123-BL	-20	1-5/16"-12 (-16)



## Aluminum AN To NPT Adapters



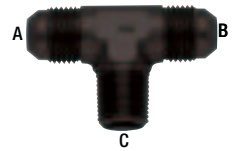
Hose Size	NPT Size	Straight Part No.	45° Part No.	90° Part No.
-3	1/8"	FRG481603-BL	FRG482303-BL	FRG482203-BL
-4	1/8"	FRG481604-BL	FRG482304-BL	FRG482204-BL
-4	1/4"	FRG481605-BL	FRG482344-BL	FRG482244-BL
-4	3/8"	FRG481644-BL	-	-
-6	1/8"	FRG481662-BL	FRG482362-BL	FRG482262-BL
-6	1/4"	FRG481606-BL	FRG482306-BL	FRG482206-BL
-6	3/8"	FRG481666-BL	FRG482366-BL	FRG482266-BL
-6	1/2"	FRG481668-BL	FRG482368-BL	FRG482268-BL
-8	1/4"	FRG481607-BL	FRG482307-BL	FRG482207-BL
-8	3/8"	FRG481608-BL	FRG482308-BL	FRG482208-BL
-8	1/2"	FRG481688-BL	FRG482388-BL	FRG482288-BL
-10	3/4"	FRG481609-BL	-	FRG482209-BL
-10	1/2"	FRG481610-BL	FRG482310-BL	FRG482210-BL
-10	3/8"	FRG481611-BL	FRG482311-BL	FRG482211-BL
-12	3/4"	FRG481612-BL	FRG482312-BL	FRG482212-BL
-12	1/2"	FRG481613-BL	FRG482313-BL	FRG482213-BL
-16	3/4"	FRG481615-BL	-	FRG482215-BL
-16	1"	FRG481616-BL	FRG482316-BL	FRG482216-BL



J.J. Schafer

## AN To NPT Adapters - Continued

Part No.	"A" Dash Size	"B" Dash Size	"C" NPT Size
<b>Aluminum Tee Pipe On-The-Side</b>			
FRG482503-BL	-3	-3	1/8"
<b>Aluminum Tee Pipe On-The-Run</b>			
FRG482603-BL	-3	-3	1/8"



Part No.	"A" Dash Size	"B" NPT Size
<b>Aluminum 90° Swivel To Male NPT</b>		
FRG499103-BL	-3	1/8"
FRG499104-BL	-4	1/8"
FRG499144-BL	-4	1/4"
FRG499106-BL	-6	1/4"
FRG499162-BL	-6	1/8"
FRG499166-BL	-6	3/8"
FRG499168-BL	-6	1/2"
FRG499107-BL	-8	1/4"
FRG499108-BL	-8	3/8"
FRG499188-BL	-8	1/2"
FRG499110-BL	-10	1/2"
FRG499111-BL	-10	3/8"
FRG499112-BL	-12	3/4"
FRG499113-BL	-12	1/2"



## NPT Adapters

Part No.	"A" NPT Size	"B" NPT Size
<b>Aluminum NPT Reducer</b>		
FRG491201-BL	1/8"	1/4"
FRG491202-BL	1/4"	3/8"
FRG491203-BL	1/8"	3/8"
FRG491204-BL	3/8"	1/2"
FRG491205-BL	1/4"	1/2"
FRG491206-BL	1/8"	1/2"
FRG491207-BL	1/2"	3/4"
FRG491208-BL	3/8"	3/4"
FRG491209-BL	1/4"	3/4"



Part No.	"A" NPT Size
<b>Aluminum Male NPT Nipple</b>	
FRG491101-BL	1/8"
FRG491102-BL	1/4"
FRG491103-BL	3/8"
FRG491104-BL	1/2"
FRG491106-BL	3/4"
<b>Aluminum Female NPT Coupler</b>	
FRG491001-BL	1/8"
<b>Aluminum Internal Allen NPT Plug</b>	
FRG493201-BL	1/16"
FRG493202-BL	1/8"
FRG493203-BL	1/4"
FRG493204-BL	3/8"
FRG493205-BL	1/2"
FRG493206-BL	3/4"
<b>Aluminum Hex NPT Plug</b>	
FRG493301-BL	1/8"
FRG493302-BL	1/4"
FRG493303-BL	3/8"
FRG493304-BL	1/2"
FRG493306-BL	3/4"



## Black Nylon Race Hose

Ideal for racing applications, black nylon race hose incorporates a synthetic rubber core that has an operational range of -40° F. to +300° F. and up to 500 PSI of working pressure, allowing for use with most oils, coolants and fuels. Lightweight, durable and attractive, black braided nylon hose is reinforced with a single braid of bright corrosion resistant type 302 stainless steel wire braid for added strength. Hose is designed for use with FPS Series 2000 hose ends and FPS Sport-Crimp hose ends.

**Note:** This hose is not intended for use with 3000 Series hose ends.

AN Size	Hose I.D.	3 Ft. Roll	10 Ft. Roll	20 Ft. Roll
-4	7/32"	FRG840304	FRG841004	FRG842004
-6	11/32"	FRG840306	FRG841006	FRG842006
-8	7/16"	FRG840308	FRG841008	FRG842008
-10	9/16"	FRG840310	FRG841010	FRG842010
-12	11/16"	FRG840312	FRG841012	FRG842012
-16	7/8"	FRG840316	FRG841016	FRG842016



## Pro Stock Fuel Line Kits

Pro Stock kits incorporate high flow, black anodized aluminum adapters and PTFE hose assemblies. No provision for fuel pressure gauge.



Part No.	Description
FRG920022-BL	-6AN x 7/8"-20 Dual Inlet Holley 4150, 9.3" Center Distance
FRG920023-BL	-8AN x 7/8"-20 Dual Inlet Holley 4150, 9.3" Center Distance
FRG920026-BL	-6AN x 9/16"-24, Demon, 9.5" Center Distance
FRG920027-BL	-8AN x 9/16"-24, Demon, 9.5" Center Distance

## Gauge Adapters

Part No.	Description
FRG495000-BL	-4AN Male x -4AN Male Inline, 1/8" Female NPT On Side
FRG495001-BL	-6AN Male x -6AN Male Inline, 1/8" Female NPT On Side
FRG495002-BL	-6AN Male x 3/8" Male NPT Inline, 1/8" Female NPT On Side
FRG495005-BL	-6AN Male x -6AN Female Inline, 1/8" Female NPT On Side
FRG495020-BL	-3AN x 1/8" Female NPT, Straight
FRG495021-BL	-4AN x 1/8" Female NPT, Straight
FRG495022-BL	-3AN x 1/8" Female NPT, 90°
FRG495023-BL	-4AN x 1/8" Female NPT, 90°



FRG495001-BL



FRG495002-BL

## Carburetor Adapters

Aluminum adapters listed have a black anodized finish.

Part No.	Description
FRG491950-BL	-6AN x 5/8"-20 Male, Carter
FRG491951-BL	-6AN x 9/16"-24 Male, Holley/Demon
FRG491952-BL	-6AN x 7/8"-20 Male, Holley 4150
FRG491955-BL	-6AN x 1/2"-20 Male, 5/16" Tube I.F.
FRG491956-BL	-6AN x 5/8"-18 Male, 3/8" Tube I.F.
FRG491957-BL	-8AN x 7/8"-20 Male, Holley
FRG491958-BL	-10AN x 7/8"-20 Male, Holley
FRG491960-BL	-6AN x 1"-20 Male, Rochester Q-Jet
FRG491965-BL	-8AN x 1"-20 Male, Rochester Q-Jet
FRG491966-BL	-8AN x 9/16"-24 Male, Holley/Demon
FRG491967-BL	-8AN x 5/8"-20 Male, Carter/Edelbrock
FRG491971-BL	-6AN x 16mm x 1.5 Female, O-Ring Seal
FRG491975-BL	-6AN x 7/8"-20 Male, 3" Long
FRG491976-BL	-8AN x 7/8"-20 Male, 3" Long
FRG491977-BL	-6AN x 9/16"-24 Male, 3" Long
FRG491978-BL	-8AN x 9/16"-24 Male, 3" Long
FRG491980-BL	7/8"-20 Inlet Plug



## Weld Bungs With 1.0" Dia. Step

Part No.	Size
FRG499558	-8 Male (3/4"-16)
FRG499560	-10 Male (7/8"-14)
FRG499562	-12 Male (1-1/16"-12)



## Hose Pressure Test Kit FRG900060

Handy kit allows the quick testing of AN hose assemblies. A compressed air source and water bath to submerge assemblies is all that is needed to check for leaks. Kit includes individual line testers for -3 through -16. Individual line testers may also be purchased separately.

### Individual Line Testers

Part No.	Hose Size
FRG900663	-3
FRG900664	-4
FRG900666	-6
FRG900668	-8
FRG900670	-10
FRG900672	-12
FRG900676	-16



## Premium Fuel Line Kits

Assembled fuel lines include high flow, black anodized aluminum adapters, stainless steel braided line, EZ system of detachment and a plugged cap with a provision for a fuel pressure gauge. Gauge not included.



Part No.	Description
FRG920002-BL	-6AN x 7/8"-20, Dual Inlet Holley 4150, 9.3" Center Distance
FRG920003-BL	-8AN x 7/8"-20, Dual Inlet Holley 4150, 9.3" Center Distance
FRG920006-BL	-6AN x 9/16"-24, Demon, 9.5" Center Distance
FRG920007-BL	-8AN x 9/16"-24, Demon, 9.5" Center Distance

## Premium Black-On-Black Fuel Line Kits

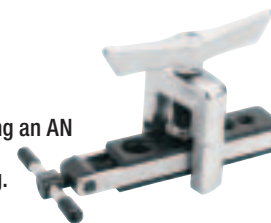
Assembled fuel line kits use high flow, black anodized aluminum adapters, black nylon race hose, EZ system of detachment and a plugged cap with a provision for a fuel pressure gauge. Gauge not included.



Part No.	Description
FRG930002-BL	-6AN x 7/8"-20 Dual Inlet Holley 4150, 9.3" Center Distance
FRG930004-BL	-8AN x 7/8"-20 Dual Inlet Holley 4150, 9.3" Center Distance
FRG930006-BL	-6AN x 9/16"-24, Demon, 9.5" Center Distance
FRG930007-BL	-8AN x 9/16"-24, Demon, 9.5" Center Distance

## 37° Flaring Tool FRG900500

Economical flaring tool allows forming an AN specification 37° JIC flare to 3/16" through 5/8" diameter hard line tubing.



Eric Price



# FRAM®

## High Performance Oil Filters

Filters feature an anti-drainback valve and a relief valve which functions as an internal bypass. When inlet pressure exceeds outlet pressure, the valve opens and oil bypasses the filter. Filters have a maximum pressure of 200 PSI with a 22 PSI safety valve.



Part No.	Dimensions O.D. x Ht.	Thread	Mic. Rat.	Max. Flow Rate	Burst PSI	Gasket
<b>Chevrolet</b>						
FRAHP4	3-5/8" x 5.75"	13/16"-16	18	10 GPM	325	Outboard
FRAHP8	3-5/8" x 4"	13/16"-16	18	10 GPM	325	Outboard
<b>Ford/Chrysler</b>						
FRAHP1	3-5/8" x 5.75"	3/4"-16	18	10 GPM	500	Inboard
FRAHP3	3-5/8" x 4"	3/4"-16	18	10 GPM	500	Inboard
<b>Remote Mount</b>						
FRAHP6*	4-1/2" x 6-1/8"	1-1/2"-12	12	20 GPM	400	Outboard

\* No anti-drain valve.

## Popular Fram Oil Filters

Application	Performance Filter	Standard Filter
Ford	FRAHP1	FRAPH8A
Chevy, Long	FRAHP4	-
Chevy, Short	-	FRAPH30
Chrysler, 1959-86	FRAHP1	-



## High Performance Fuel Filter

Heavy Duty Fuel Filter flows 90 GPH at 0.5 PSI. Chrome housing has 3/8"-18 NPT inlet and outlet. Element and HD chrome mounting bracket included.



**Part No. Description**  
 FRAHPG1.....Chrome Canister Type Filter With Element  
 FRAHPGC1 .....Replacement Element Only

## Standard Fuel Filters

**Part No. Description**  
 FRAG2.....Plastic Housing With 5/16" Ends  
 FRAG3.....Plastic Housing With 3/8" Ends  
 FRAG15.....Steel Housing With 3/8" Ends

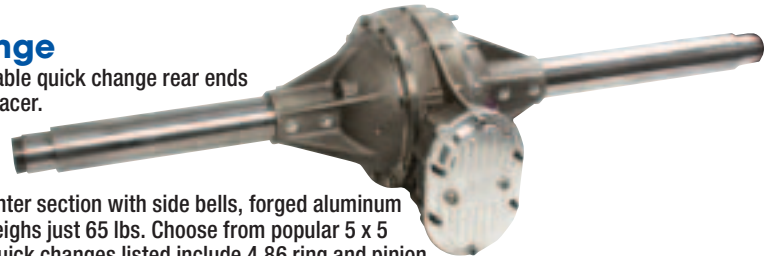


## Closed Tube Superlite Quick Change

The Frankland Superlite is among the lightest and most durable quick change rear ends currently available, yet it is also affordable to the sportsman racer.

The redesigned pinion carrier and state-of-the-art ring and pinion technology combine to deliver increased longevity. The Superlite is durable, and the center section is guaranteed for one full year against breakage.

A complete magnesium center section with side bells, forged aluminum spool, solid lower shaft and spread bearing ring and pinion weighs just 65 lbs. Choose from popular 5 x 5 SCP or Wide 5 style rears, or rears less tubes, if desired. All quick changes listed include 4.86 ring and pinion set with posi-lock (FRKKT0355-214A), aluminum spool (FRKQC0432), heat treated lower shaft (FRKQC0405PH), inspection plug in right bell (FRKSP0031) and billet rear cover with heavy duty bearings (FRKKT0840B).



Joe Mayabb

Part No.	Description	Added Options	Axles	Housing Width
<b>5 x 5 SCP Quick Changes</b>				
FRK01-60-2C	Steel Tubes, 2.5" GN Snouts	Steel 2.5" SCP Tubes	32.5"/28.5"	60"
FRK01-60-2CK	Steel Tubes, 2.5" GN Snouts	Steel 2.5" SCP Tubes, GN Hub Kit, .810" Rotors & Solid Axles	32.5"/28.5"	60"
FRK01-60C	Steel Tubes, 2.5" GN Snouts	Steel 2.5" SCP Tubes	30.5"/30.5"	60"
FRK01-60CK	Steel Tubes, 2.5" GN Snouts	Steel 2.5" SCP Tubes, GN Hub Kit, .810" Rotors & Solid Axles	30.5"/30.5"	60"
FRK01-62C	Steel Tubes, 2.5" GN Snouts	Steel 2.5" SCP Tubes	31.5"/31.5"	62"
FRK01-62CK	Steel Tubes, 2.5" GN Snouts	Steel 2.5" SCP Tubes, GN Hub Kit, .810" Rotors & Solid Axles	31.5"/31.5"	62"
<b>Wide 5 Quick Changes</b>				
FRK01-GRT	GRT Chassis	Black Aluminum Wide 5 Tubes	34"/35"	62-5/8"
FRK01-MAS	Masterbuilt Chassis	Black Aluminum Wide 5 Tubes	33"/35"	61-5/8"
FRK01-RAY	C.J. Rayburn Chassis	Black Aluminum Wide 5 Tubes	34"/36"	63-5/8"
FRK01-ROC	Rocket Chassis	Black Aluminum Wide 5 Tubes	33"/36"	62-1/2"
<b>Quick Changes/Less Tubes</b>				
FRK01-LT	Less Tubes	None	N/A	N/A
FRK01-LTC	Less Tubes	Thermal Coated	N/A	N/A

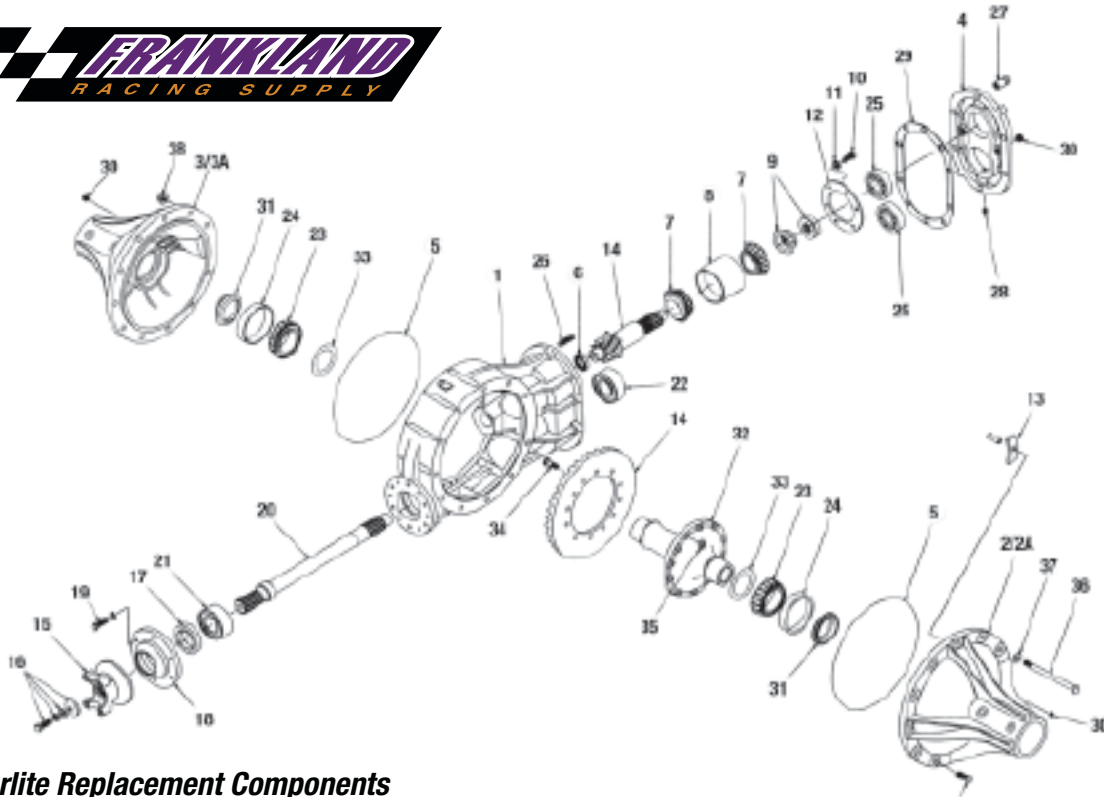


Brent Jack



Jeff Ganus

Photos By: John Berglund



### Superlite Replacement Components

No.	Description	Part No.
1	Center Section Nose Bearing, Magnesium	-
2	Left Side Bell, 8-Rib	FRKQC0253ML
2A	Left Side Bell, 6-Rib	FRKQC0254M
2A	Left Side Bell, 6-Rib, Coated	FRKQC0254MC
3	Right Side Bell, 8-Rib	FRKQC0253MR
3A	Right Side Bell, 6-Rib	FRKQC0255M
3A	Right Side Bell, 6-Rib, Coated	FRKQC0255MC
4	Superlite Rear Cover	FRKKT0840M
5	Seal O-Ring, Superlite And Frankland III	FRKQC0275
6	Pinion Nose Bearing, Narrow	FRKQC0160
7	Pinion Bearing	FRKQC0200
8	Pinion Bearing, Carrier	FRKQC0203
9	Pinion Nut, LH, Spread Bearing Posi Lock	FRKQC0214A
10	Pinion Lock Plate Bolt	FRKQC0108

No.	Description	Part No.
11	3/8" Lock Washer	FRKQC0100
12	Pinion Lock Plate, Steel	FRKQC0060
13	Thrust Block And Pin	FRKQC0310
14	4.86 Ring & Pinion, Original	FRKQC0182
15	Yoke	FRKQC0380
16	Yoke Bolt & Washer	FRKQC0381
17	Front Yoke Seal	FRKQC0150
18	Front Seal Plate	FRKQC0140
19	3/8"-16 x 1-1/4" Bolt, Aluminum	FRKQC0109A
20	Lower Shaft, Pre-Hardened	FRKQC0405PH
21	Sprint Input Shaft Bearing	FRKSP0017
22	Sprint Output Shaft Bearing	FRKSP0018
23	Carrier Bearing	FRKQC0290
23	Carrier Bearing, Used For Set-Up	FRKQC0289*
24	Carrier Bearing Race	FRKQC0280
25	Rear Cover Bearing	FRKQC0090

No.	Description	Part No.
26	Rear Cover Stud	FRKQC0121
27	Rear Cover Nut	FRKQC0122
28	Rear Cover Bearing Lock Screw	FRKQC0117
29	Rear Cover Gasket	FRKQC0815
30	Pipe Plug, 3/8" Aluminum	FRKQC0321A
31	Axle Tube Seal	FRKQC0300
32	Aluminum Spool	FRKQC0432
33	Shim Kit	FRKKT0445
34	Ring Gear Bolt	FRKQC0307
35	Ring Gear Nut	FRKQC0103
36	Through Bolt	FRKQC0306
37	7/16" Flat Washer	FRKQC0302
38	7/16" Nut	FRKQC0308
39	7/16"-14 x 1-1/4" Bolt	FRKQC0305

\* Special bearing is honed so it can slide on and off the differential, speeding up the set-up process. Two required.

### Rear Covers

Aluminum rear axle covers are offered for popular Superlite and Winters quick changes. Rear cover kits include cover and bearings.

Part No.	Description
FRKKT0840B	Superlite Billet Rear Cover Kit, Thermal Coated
FRKKTW0840B	Winters Billet Rear Cover Kit
FRKKT0840M	Superlite Rear Cover Only
FRKKT0840MC	Superlite Rear Cover Only, Thermal Coated
FRKQCW0840M	Winters Rear Cover Only



### Gleason Torsen Differential

Offered for quick change or Ford 9" rears, the Gleason Torsen differential offers exceptional traction to circle track racing applications.

Part No.	Description
FRKKT0100	Gleason Torsen Differential With Bearings And Shims, Quick Change

FRKQC0461.....Gleason Torsen Differential, Ford 9"

**Note:** When installing a Gleason Torsen differential, note that the threaded ring gear bolts should not protrude more than one thread through the ring gear. Frankland originals must use a single row pinion support bearing (FRKQC0170) for clearance purposes.



### Loaded 4.86 Ring And Pinion Assembly

#### FRKKT0355-214A

Assembly includes 4.86 spread bearing, 4.12 spread bearing, pinion carrier bearing, spread bearing pinion race, posi-lock nut, pinion nut, 1/4"-28 x 5/16" half dog set screw and pinion spacer.



### Grand National Hub Kit FRKGN210-K

Kit includes steel Grand National hub, bearings and seals.

#### Related/Replacement Components

Part No.	Description
FRKGN0060	Snout Nut, Right
FRKGN0070	Snout Nut, Left
FRKGN0080	Snout Nut Lock
FRKGN0100	Hub Bearing
FRKGN0110	Hub Seal
FRKGN0140	Outer Snout Seal





## Pro Cell Racing Cells

Tough, durable cell's ballistic nylon bladder is covered with fuel resistant coating and filled with foam baffling. A steel container, aircraft nut ring, dual -8AN pick-up, internal strainer and 6" x 10" fill plate with 2-1/2" threaded cap and roll-over valve are standard. Approved for NASCAR, FIA, SCCA, SCORE and others. For gasoline only.



Part No.	Volume	Length	Width	Height
FUEPC110	10 Gal.	25-5/8"	10-1/8"	10-1/8"
FUEPC115	15 Gal.	26"	17-7/8"	9-1/2"
FUEPC122B	22 Gal.	25-1/2"	17-1/8"	13-3/4"

## Sportsman Racing Cells

Approved by ACT, ALMS, DIRT, FIA and SCCA, cell has steel container, foam baffling, aircraft nut ring, dual -8AN pick-up, 6" x 10" fill plate with 2-1/2" threaded cap and roll-over valve and internal strainer. Double coated, nylon bladder is covered by a 3 year warranty. For gasoline only.



Part No.	Volume	Length	Width	Height
FUESM108B	8 Gal.	20-1/8"	12-1/8"	8-5/8"
FUESM112	12 Gal.	20-3/4"	17-7/8"	9-1/2"
FUESM115	15 Gal.	26"	17-7/8"	9-1/2"
FUESM117	17 Gal.	20-1/8"	17-1/8"	12-3/4"
FUESM118B	18 Gal.	33-1/2"	20"	6-1/2"
FUESM122A	22 Gal.	34"	18"	9-1/2"
FUESM122B	22 Gal.	25-1/2"	17-1/8"	13-3/4"

## Enduro Racing Cells

Cell includes steel container, FIA-FT3, DIRT and SCCA approved polymer bladder, full foam baffling, standard fill plate with 2-1/2" threaded cap and roll-over valve, internal fuel strainer and dual, -8AN fuel pick-up. Bladder is covered by a 2 year warranty. Compatible with alcohol if foam is removed.



Part No.	Volume	Length	Width	Height
FUEED105	5 Gal.	13-5/8"	13-5/8"	8-3/8"
FUEED108	8 Gal.	20-3/4"	16"	7-3/4"
FUEED112	12 Gal.	20-3/4"	17-7/8"	9-1/2"
FUEED115	15 Gal.	26"	17-7/8"	9-1/2"
FUEED122B	22 Gal.	25-1/2"	17-1/8"	13-3/4"
FUEED125	25 Gal.	26-1/4"	17-7/8"	14-1/2"
FUEED132A	32 Gal.	34-1/2"	17-7/8"	14-5/8"



Adam Thrush

## Race Safe Racing Cells

Ideal for hobby stock, vintage and road course. Available with or without steel container. Cell has formulated polymer bladder, full foam baffling, standard fill plate with 2-1/2" threaded cap and roll-over valve, internal fuel strainer and dual, -8AN fuel pick-up. Compatible with alcohol if foam is removed.



FUERS122B



FUERS222B

Part No.	Volume	Length	Width	Height
<b>Racing Bladders Only</b>				
FUERS112	12 Gal.	20-3/16"	17-5/16"	9-3/16"
FUERS115	15 Gal.	25-3/16"	17-5/16"	9-3/16"
FUERS122A	22 Gal.	33-5/8"	17-1/2"	9-1/16"
FUERS122B	22 Gal.	24-3/4"	16-5/8"	13-5/16"
<b>Racing Bladders With Steel Containers</b>				
FUERS208	8 Gal.	20-3/4"	16"	7-3/4"
FUERS212	12 Gal.	20-3/4"	17-7/8"	9-1/2"
FUERS215	15 Gal.	26"	17-7/8"	9-1/2"
FUERS222A	22 Gal.	34-5/8"	18-1/8"	9-1/2"
FUERS222B	22 Gal.	25-1/2"	17-1/8"	13-3/4"

## Fuel Cell Accessories Powder Coated Steel Containers

**Part No. Description**  
 FUESC115.....Fits PC115/SM115 Bladders  
 FUESC122A.....Fits PC122A/SM122A Bladders  
 FUESC122B.....Fits PC122B/SM122B Bladders



## Roll Over Valve FUERV38

In-line roll over/vent valve fits 3/8" hose.



## 1/2" Check Valve FUEITV08S

Check valve is 1/2" with spring for standard fill. Mounts in fill plate and offers positive shut-off.



Rich Robinson Jr.

Photos By: John Berglund



## Fuel Cell Accessories

### Discriminator Valve **FUEDV100**

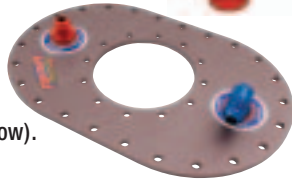
One inch valve automatically shuts off when tank is full. No catch can is necessary. Valve is also a positive shut-off in a rollover.



### Multi Location 6" X 10" Fill Plates

Plates are for use with fill valves (below).

Part No.	Description
FUEML6X10A	1/2" (-8) Pickup And 1/2" Vent Check Valve
FUEML6X10B	1/2" (-8) Pickup And 1" Vent Valve



### Standard 6" X 10" Fill Plate **FUESF6X10A**

Plate is complete with 2-1/2" threaded filler cap.



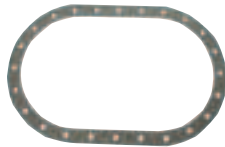
### Remote 2-1/4" 45° Fill Valve **FUEFV245A**

Remote Fill Valve fits 6" x 10" fill plates (above).



## Gaskets

Part No.	Description
FUE1GAS78	12-Bolt Round Gasket, 4-3/4" B.C.
FUE1GAS79	12-Bolt Round Gasket, 5-3/8" B.C.
FUE1GAS97	24-Bolt Oval Gasket, 6" x 10", Base Of Multi-Plate
FUE1GAS98	12-Bolt Oval Gasket, 4" x 6", Sprint Top Plate



### Aircraft Style Flush Cap **FUEA412S**

Cap is 3" diameter, 12-bolt design with 4-3/4" bolt circle.



## Filler Caps

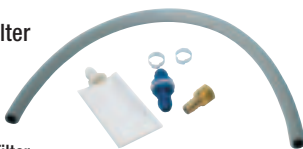
Part No.	Description
FUEFC225	2-1/4" Filler Cap, Non-Vented
FUEFC250C	2-1/2" Filler Cap, Non-Vented
FUEFC300	3" Filler Cap, Non-Vented
FUEFC400	4" Bail Style Filler Cap, Non-Vented



## Fuel Pickup Kits

Kits contain 2' of hose, hose barb, filter and bulkhead fitting.

Part No.	Description
FUEFP180	3/8" Hose, -6AN Fitting
FUEFP181	1/2" Hose, -8AN Fitting
FUEFP182	5/8" Hose, -10AN Fitting, No Filter
FUEFP183	3/4" Hose, -12AN Fitting, No Filter



## Corner Pick-Up Assembly

Where maximum fuel pick-up is required. Unique design allows the fuel line to pick-up the last drop of fuel. A must in limited gallonage classes.

Part No.	Size
FUECP38	3/8"
FUECP12	1/2"



## Surge Tanks

Check valve traps all usable fuel and lessens the chance of fuel starvation.

Part No.	Description
FUEST100-8	Surge Tank With-8 Fitting
FUECV100	1" Surge Tank Check Valve



## 1 Gallon Fuel Displacement Block **FUEDB100**

Block is 6" x 6" x 6" in size and displaces 1 gallon of fuel.



## Fuel Dipstick **FUEFL-08**



Check fuel level with a twist of the nut.

## Recessed Fender Filler **FUERFF225**

2-1/4" recessed remote fender filler makes it easier to mount in fender or deck of car.



## 2-1/4" Rubber Elbows

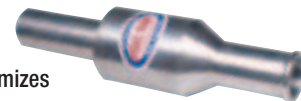
45° and 90° tough rubber elbows are for use with remote fill plates.

Part No.	Description
FUERE90-2.25	2-1/4" 90° Elbow
FUERE45-2.25	2-1/4" 45° Elbow



## NASCAR Vent Valve **FUENSV125**

Valve eliminates fuel spill and maximizes air flow 1-1/4".



Chris Shannon

Photo By: John Berglund



## G-Force Helmets

A complete line of revolutionary, lightweight helmets that incorporate mounting points for the Hans® Device and, unless otherwise noted, meet Snell SA2010 and SFI 31.2A (open face) or 31.2A (full face) specs. See the size chart below for proper helmet selection.

### Pro Eliminator

Sleek Pro Eliminator uses a lightweight Z38 composite shell with G-FLOW ventilation let cool air in and hot air out through the top and back. Hypoallergenic CoolTec liner contributes to overall driver comfort. Helmet meets SA2010 specifications and is available in white, black or matte black.



White Part No.	Black Part No.	Matte Black Part No.	Size
GFR3023SMLWH	GFR3023SMLBK	GFR3023SMLMB	Small
GFR3023MEDWH	GFR3023MEDBK	GFR3023MEDMB	Medium
GFR3023LRGWH	GFR3023LRGBK	GFR3023LRGMB	Large
GFR3023XLGWH	GFR3023XLGBK	GFR3023XLGMB	X-Large
GFR3023XXLWH	GFR3023XXLBK	GFR3023XXLMB	XX-Large

### Side Draft

The Side Draft offers a forced air option and soft knit, padded CoolTec flame retardant and G-78 impact liner for increased driver comfort and safety. Helmet is manufactured using a lightweight Z38 fiberglass, carbon Kevlar composite blend shell that includes reinforced mounting points for the Hans® Device. Meets Snell SA2010 and SFI 31.1 specifications. Offered in white only.

**Part No.** **Size**  
 GFR3027MEDWH ..... Medium  
 GFR3027LRGWH ..... Large  
 GFR3027XLGWH ..... X-Large



## Helmet Size Conversion Chart

Measurement	Size	Metric
20-1/2"	6-1/2 (XX - Small)	52
20-7/8"	6-5/8 (X - Small)	53
21-1/4"	6-3/4 (X - Small)	54
21-5/8"	6-7/8 (Small)	55
22"	7 (Small)	56
22-3/8"	7-1/8 (Medium)	57
22-3/4"	7-1/4 (Medium)	58
23-1/8"	7-3/8 (Large)	59
23-1/2"	7-1/2 (Large)	60
23-7/8"	7-5/8 (X - Large)	61
24-1/4"	7-3/4 (X - Large)	62
24-3/4"	7-7/8 (XX Large)	63
25-1/8"	8 (XX - Large)	64

### Pro Vintage *NEW!*

Eye-catching helmet features a lightweight Z38 fiberglass, carbon Kevlar blend shell that is coated with white or black gloss paint and then covered with an airbrushed flame and checkered pattern. Pro Vintage also includes the G-FLOW ventilation system to enhance cooling, while the G-78 impact liner increases both safety and comfort. Helmet includes mounting points for the Hans® Device and meets SA2010 specifications. Offered in white or black, both with flame/checkered pattern.



White Part No.	Black Part No.	Size
GFR3025SMLWH	GFR3025SMLBK	Small
GFR3025MEDWH	GFR3025MEDBK	Medium
GFR3025LRGWH	GFR3025LRGBK	Large
GFR3025XLGWH	GFR3025XLGBK	X-Large
GFR3025XXLWH	GFR3025XXLBK	XX-Large

### Modified

The Modified combines the safety of a full face helmet with the feel of an open face model. Outer shell is manufactured from lightweight Z38 fiberglass, carbon Kevlar blend and is fitted with the G-78 impact liner and CoolTec flame retardant liner for added safety. Reinforcing mounting points are built-in for the Hans® Device. Meets stringent SA2010 specifications. Offered in white only.

**Part No.** **Size**  
 GFR3026MEDWH ..... Medium  
 GFR3026LRGWH ..... Large  
 GFR3026XLGWH ..... X-Large



### Pro Phenom

Classic open face helmet has a lightweight fiberglass shell, CoolTec liner and Kevlar chin strap. Adjustable visor has a tinted strip and provides sun and glare protection. Meets SFI 31.1A (open face) and Snell SA2010 specifications. Offered in black or white.



White Part No.	Black Part No.	Size
GFR3021SMLWH	GFR3021SMLBK	Small
GFR3021MEDWH	GFR3021MEDBK	Medium
GFR3021LRGWH	GFR3021LRGBK	Large
GFR3021XLGWH	GFR3021XLGBK	X-Large

## Helmet Shield Chart

Description	Pro Eliminator Pro Eliminator X SA2005/2010	Eliminator Eliminator X M2005
ProFit Clear	GFRGF-8601	GFRGF-8601
ProFit Smoke	GFRGF-8602	GFRGF-8602
ProFit Mirror Smoke	GFRGF-8603	GFRGF-8603
ProFit Amber	GFRGF-8604	GFRGF-8604
ProFit Blue Mirror	GFRGF-8605	GFRGF-8605
ProFit Light Smoke	GFRGF-8606	GFRGF-8606

# G-FORCE<sup>®</sup> RACING GEAR

## GF105 Racing Suits

Each GF105 single-layer suit consists of a cool, comfortable Pyrovatex shell sewn with Nomex thread and a five-needle safety stitch. All suits have a white billboard, trimmed in contrasting piping, white arm and leg stripes, large pockets, Nomex cuffs and Nomex neck enclosures for extra protection. Available in one- or two-piece (jacket and pants). Suits meet SFI 3.2A/1 specifications and are available in black, red or blue.



### One-Piece Suits

Color	Small	Medium	Large	X-Large	XX-Large
Black	GFR4372SBK	GFR4372MBK	GFR4372LBK	GFR4372XBK	GFR4372XXBK
Red	GFR4372SRD	GFR4372MRD	GFR4372LRD	GFR4372XRD	GFR4372XXRD
Blue	GFR4372SBL	GFR4372MBL	GFR4372LBL	GFR4372XBL	GFR4372XXBL

### Two-Piece Suits (Jacket And Pants)

Color	Small	Medium	Large	X-Large	XX-Large
<b>Jacket</b>					
Black	GFR4381SBK	GFR4381MBK	GFR4381LBK	GFR4381XBK	GFR4381XXBK
Red	GFR4381SRD	GFR4381MRD	GFR4381LRD	GFR4381XRD	—
Blue	GFR4381SBL	GFR4381MBL	GFR4381LBL	GFR4381XBL	—
<b>Pants</b>					
Black	GFR4382SBK	GFR4382MBK	GFR4382LBK	GFR4382XBK	GFR4382XXBK
Red	GFR4382SRD	GFR4382MRD	GFR4382LRD	GFR4382XRD	—
Blue	GFR4382SBL	GFR4382MBL	GFR4382LBL	GFR4382XBL	—

### Kart/Quarter Midget Two-Piece Suits (Jacket And Pants)

Color	Small	Medium	Large	X-Large	XX-Large
<b>Jacket</b>					
Black	GFR4381CSMBK	GFR4381CMBK	GFR4381CLGBK	—	—
<b>Pants</b>					
Black	GFR4382CSBK	GFR4382CMDBK	GFR4382CLGBK		

## GF125 Racing Suits

Single layer, GF125 has a bright, semi-gloss finish, straight, black epaulets and meets SFI 3.2A/1 specifications. Pyrovatex fabric gives the GF125 a TPP (Thermal Protective Performance) rating close to 10. The SFI tag is on the left arm cuff for easy tech inspection. Choice of black, red or blue. Offered in one- or two-piece (jacket and pants).



### One-Piece Suits

Color	Small	Medium	Large	X-Large	XX-Large
Black	—	GFR4125MEDBK	GFR4125LRGBK	GFR4125XLRGBK	—

### Two-Piece Suits (Jacket And Pants)

Color	Medium	Large	X-Large	XX-Large
<b>Jacket</b>				
Black	GFR4126MBK	GFR4126LBK	GFR4126XBK	GFR4126XXBK
Red	GFR4126MRD	GFR4126LRD	GFR4126XRD	GFR4126XXRD
Blue	GFR4126MBL	GFR4126LBL	GFR4126XBL	GFR4126XXBL
<b>Pants (Available In Black Only)</b>				
Black	GFR4127MBK	GFR4127LBK	GFR4127XBK	GFR4127XXBK

## GF505 Racing Suits

The GF505 triple-layer racing suit's Pyrovatex shell and exclusive Coolquilt liner provide breathable comfort. A second, fire retardant fabric liner wicks moisture away from the body. Suits have white billboards and are trimmed with contrasting piping, white arm and leg stripes, large pockets, brass zippers with Nomex tape, Nomex cuffs and Nomex neck enclosures for extra protection. Available in one- or two-piece (jacket and pants). Suits meet SFI 3.2A/5 specifications and are available in black, red or blue.



One-Piece Suit

Two-Piece Suit

### One-Piece Suits

Color	Small	Medium	Large	X-Large	XX-Large
Black	GFR4380SBK	GFR4380MBK	GFR4380LBK	GFR4380XBK	GFR4380XXBK
Red	GFR4380SRD	GFR4380MRD	GFR4380LRD	GFR4380XRD	—
Blue	GFR4380SBL	GFR4380MBL	GFR4380LBL	GFR4380XBL	—

### Two-Piece Suits (Jacket And Pants)

Color	Small	Medium	Large	X-Large	XX-Large
<b>Jacket</b>					
Black	GFR4385SBK	GFR4385MBK	GFR4385LBK	GFR4385XBK	GFR4385XXBK
Red	GFR4385SRD	GFR4385MRD	GFR4385LRD	GFR4385XRD	GFR4385XXRD
Blue	GFR4385SBL	GFR4385MBL	GFR4385LBL	GFR4385XBL	GFR4385XXBL
<b>Pants</b>					
Black	GFR4386SBK	GFR4386MBK	GFR4386LBK	GFR4386XBK	GFR4386XXBK
Red	GFR4386SRD	GFR4386MRD	GFR4386LRD	GFR4386XRD	GFR4386XXRD
Blue	GFR4386SBL	GFR4386MBL	GFR4386LBL	GFR4386XBL	GFR4386XXBL

## GF525 Racing Suits

Multi-layer racing suit's Pyrovatex fabric provides a TPP (Thermal Protective Performance) rating of 21 to meet SFI 3.2A/5 specifications. The attractive, bright semi-gloss finish and straight black epaulets cover an inner layer that wicks moisture and breathes for added comfort. The SFI tag is on the left arm cuff for easy tech inspection. Choose among one- or two-piece suits in black, red or blue.



### One-Piece Suits

Color	Medium	Large	X-Large	XX-Large
Black	GFR4525MBK	GFR4525LBK	GFR4525XBK	GFR4525XXBK
Red	GFR4525MRD	GFR4525LRD	GFR4525XRD	GFR4525XXRD
Blue	GFR4525MBL	GFR4525LBL	GFR4525XBL	GFR4525XXBL

### Two-Piece Suits (Jacket And Pants)

Color	Medium	Large	X-Large	XX-Large
<b>Jacket</b>				
Black	GFR4526MBK	GFR4526LBK	GFR4526XBK	GFR4526XXBK
Red	GFR4526MRD	GFR4526LRD	GFR4526XRD	GFR4526XXRD
Blue	GFR4526MBL	GFR4526LBL	GFR4526XBL	GFR4526XXBL
<b>Pants (Available In Black Only)</b>				
Black	GFR4527MBK	GFR4527LBK	GFR4527XBK	GFR4527XXBK



## GF545 Racing Suit

Double layer, GF545 racing suit's GTEX outer layer and Nomex knit inner layer combine for a soft knit feel and cool interior. The 360°, soft knit arm gussets and 360° armholes offer greater range of motion, and contrasting box stitching accents appearance and adds durability. Suit meets stringent SFI 3.2A/5 specifications and has a TPP (Thermal Protective Performance) rating of 23. Choose from one- or two-piece suits in black, red or blue.



### One-Piece Suits

Color	Medium	Large	X-Large	XX-Large
Black	GFR4545MBK	GFR4545LBK	GFR4545XBK	—
Red	GFR4545MRD	GFR4545LRD	GFR4545XRD	—
Blue	GFR4545MBL	GFR4545LBL	GFR4545XBL	—

### Two-Piece Suits (Jacket And Pants)

Color	Medium	Large	X-Large	XX-Large
<b>Jacket</b>				
Black	GFR4546MBK	GFR4546LBK	GFR4546XBK	GFR4546XXBK
Red	GFR4546MRD	GFR4546LRD	GFR4546XRD	—
Blue	GFR4546MBL	GFR4546LBL	GFR4546XBL	—
<b>Pants</b>				
Black	GFR4547MBK	GFR4547LBK	GFR4547XBK	—
Red	GFR4547MRD	GFR4547LRD	GFR4547XRD	—
Blue	GFR4547MBL	GFR4547LBL	GFR4547XBL	—

## G1 Racing Gloves

RaceGrip flame retardant gloves are made from knit Nomex and leather. Palms and knuckle pads are reinforced with leather. Gloves meet SFI 3.3/1 specifications. Available in black, blue or red.



Color	Small	Medium	Large	X-Large
Black	GFR4100SBK	GFR4100MBK	GFR4100LBK	GFR4100XBK
Blue	GFR4100SBL	GFR4100MBL	GFR4100LBL	GFR4100XBL
Red	GFR4100SRD	GFR4100MRD	GFR4100LRD	GFR4100XRD

### Kart/Quarter Midget Gloves

Color	X-Small	Small	Medium
Black	GFR4100XSMBK	GFR4100CSBK	GFR4100CMBK

## G5 Racing Gloves

Lightweight, flexible gloves are sewn from quality Nomex and leather. Gloves include reinforced leather palms and knuckle pads, adjustable Velcro wrist closures and meet SFI 3.3/5 specifications. Available in black, blue or red.



Color	Small	Medium	Large	X-Large
Black	GFR4101SBK	GFR4101MBK	GFR4101LBK	GFR4101XBK
Blue	GFR4101SBL	GFR4101MBL	GFR4101LBL	GFR4101XBL
Red	GFR4101SRD	GFR4101MRD	GFR4101LRD	GFR4101XRD

## GF235 RaceGrip Mid-Top Racing Shoes

High quality suede leather racing shoe has an exclusive rubber RaceGrip sole for exceptional pedal feel. The CoolTec liner and RaceGrip inner sole and arch support deliver extra comfort. Offered in black, blue or red in sizes 5-13.



Size	Black	Blue	Red
5	GFR0235BK5	GFR0235BL5	—
6	GFR0235BK6	GFR0235BL6	GFR0235RD6
7	GFR0235BK7	GFR0235BL7	GFR0235RD7
8	GFR0235BK8	GFR0235BL8	GFR0235RD8
9	GFR0235BK9	GFR0235BL9	GFR0235RD9
10	GFR0235BK10	GFR0235BL10	GFR0235RD10
11	GFR0235BK11	GFR0235BL11	GFR0235RD11
12	GFR0235BK12	GFR0235BL12	GFR0235RD12
13	GFR0235BK13	GFR0235BL13	GFR0235RD13

## Boot Heat Shield GFRGF-1001

Shield adds protection from engine and exhaust heat. One size fits all. Black only. Sold individually.



## Flame-Retardant Underwear

Flame-retardant underwear is the essential foundation of any racing uniform. Tops and bottoms are available in natural color.



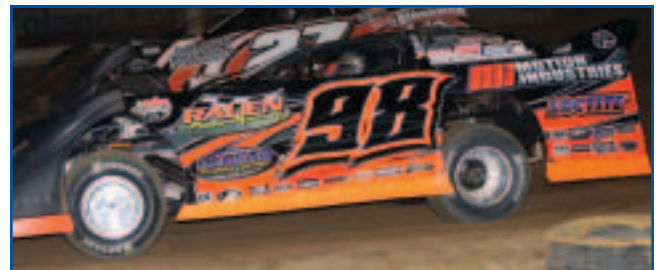
Color	Small	Medium	Large	X-Large
<b>Tops</b>				
	36-38	38-42	42-46	46-49
Natural	GFR4160SNT	GFR4160MNT	GFR4160LNT	GFR4160XNT
<b>Bottoms</b>				
	29-32	32-35	38-40	41-43
Natural	GFR4161SNT	GFR4161MNT	GFR4161LNT	GFR4161XNT

**Note:** It is highly recommended that a layer of underwear be worn with all suits for added protection, particularly when using a single layer suit.



## Flame-Retardant Socks

Description	Small	Medium	Large	X-Large
<b>Size</b>	3-5	5-7	7-9	10-13
Nomex Socks	GFR4140SCT	GFR4140MCT	GFR4140LCT	GFR4140XCT



Jason Rauhen

Photo By: Jim DenHamer

# G-FORCE<sup>®</sup> RACING GEAR

## Helmet Bag GFRGF-1002

Durable fleece lined nylon bag will help helmet looking new and scratch-free. Offered in black only.



## Helmet Skirts

Soft knit fire-retardant skirts have an extra wide Velcro strap for fastening.

Black	Red	Blue
GFRGF-4240BK	GFRGF-4240RD	GFRGF-4240BL



## Flame-Retardant Balaclavas

Provides an extra level of protection to the head and face. Choose single or double eyeport. In single or double layer.



Description	Natural	Black	Blue	Red
Single Eyeport/ Single Layer	GFR41121L1NT	GFR41121L1BK	GFR41121L1BU	GFR41121L1RD
Single Eyeport/ Double Layer	GFR41122L1NT	GFR41122L1BK	GFR41122L1BU	GFR41122L1RD
Double Eyeport/ Double Layer	GFR41122L2NT	GFR41122L2BK	-	-

## Helmet Supports

G-Force 360° Helmet Supports are made from high density, fire retardant foam covered with soft, knit CoolTec material. Available in black, blue or red, in small, medium and large sizes. Meets SFI 3.3 Specs.



Color	Small	Medium	Large
Black	GFR4122SBK	GFR4122MBK	GFR4122LBK
Blue	GFR4122SBL	GFR4122MBL	GFR4122LBL
Red	GFR4122SRD	GFR4122MRD	GFR4122LRD

## Helmet Accessories

**Part No. Description**  
GFR3015 .....Pivot Kit,  
Fits All SA2010 Full Face Helmets  
GFRGF-8006.....Plastic Tear-Off Posts  
GFRGF-8600.....Pivot Kit (ProFit), All New Model Helmets



## Arm Restraints

High strength nylon arm restraints are covered in foam and flame-retardant cloth. Available in black, blue or red.



Description	Black	Red	Blue
Adult	GFR4087BK	GFR4087RD	GFR4087BL
Junior	GFR4087JNRBK	-	-

## Latch And Link Harnesses

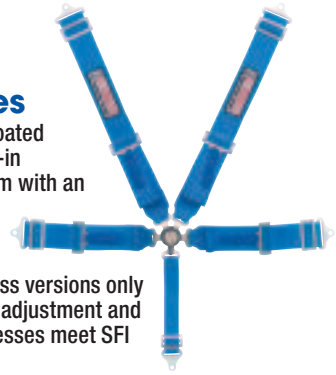
Harnesses are constructed from low-stretch, PolyTek comfort-coated webbing and combined with 3" bolt-end hardware, rather than the traditional 2". Double adjustable belts adjust at the normal points and at the mounting points to fit virtually any application. Sets include 3" lap and shoulder belts, and 1.75" submarine belt. Harnesses meet stringent SFI 16.1 specifications, and are offered in black, blue or red.



Description	Black	Blue	Red
<b>Individual Shoulder Harness Sets</b>			
5-Pt., Pull-Down	GFR6000BK	GFR6000BL	GFR6000RD
5-Pt., Pull-Up	GFR6100BK	GFR6100BL	GFR6100RD
<b>V-Type Harness Sets</b>			
5-Pt., Pull-Down	GFR6020BK	GFR6020BL	GFR6020RD
<b>H-Type Harness Sets</b>			
5-Pt., Pull-Down	GFR6030BK	-	-
<b>Individual Shoulder Harness Sets - Junior Racer</b>			
5 Pt., Pull-Up	GFR6460BK	-	-

## Camlock Harnesses

Low-stretch, PolyTek comfort-coated webbing is combined with 3" bolt-in hardware and Camlock mechanism with an ultra-lightweight magnesium case. A 1/4 turn will fasten or release the belts. Offered in 5-point, individual shoulder harness versions only with pull-down or pull-up lap belt adjustment and choice of black, blue or red. Harnesses meet SFI 16.1 specifications.



Description	Black	Blue	Red
<b>Individual Shoulder Harness Sets</b>			
5-Pt. Pull-Down	GFR7000BK	GFR7000BL	GFR7000RD
5-Pt. Pull-Up	GFR7100BK	GFR7100BL	GFR7100RD

**Note:** Camlock harness may also be used as a wrap around installation.

## Harness Pads

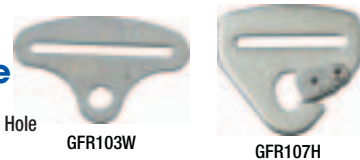
G-Force Harness Pads provide an extra measure of comfort and safety for the driver. Covered in flame-retardant fabric with Velcro closures. Sold in pairs and are available in black, blue or red.



Description	Black	Red	Blue
Harness Pad	GFR4098BK	GFR4098RD	GFR4098BL

## Anchor Hardware

**Part No. Description**  
GFR103W .....Bolt End, 3" Slot, 1/2" Hole  
GFR107H .....Snap Hook, 2" Wide



Cody Hudson

Photo By: Randall Van Hoof