



NEW VENDOR

MX 2-5/8" Coil-Over Springs

MX 2-5/8" Coil-Over Springs are manufactured from high tensile, VMX alloy steel that features fewer coils for reduced weight and increased travel, while offering the same strength as conventional springs. Springs are etched with the rate and are covered by a lifetime guarantee. Offered in 4", 8", 10", 12" and 14" free lengths.

| Rate | 4" Tall Part No. | 8" Tall Part No. | 10" Tall Part No. | 12" Tall Part No. | 14" Tall Part No. |
|------|------------------|-------------------|-------------------|-------------------|-------------------|
| 175 | - | - | IRS310-2510-175MX | IRS310-2512-175MX | IRS310-2514-175MX |
| 185 | - | - | - | - | IRS310-2514-185MX |
| 200 | - | - | IRS310-2510-200MX | IRS310-2512-200MX | IRS310-2514-200MX |
| 225 | - | - | IRS310-2510-225MX | IRS310-2512-225MX | IRS310-2514-225MX |
| 250 | - | - | IRS310-2510-250MX | IRS310-2512-250MX | IRS310-2514-250MX |
| 275 | - | - | IRS310-2510-275MX | IRS310-2512-275MX | IRS310-2514-275MX |
| 300 | - | - | IRS310-2510-300MX | IRS310-2512-300MX | - |
| 325 | - | - | IRS310-2510-325MX | IRS310-2512-325MX | - |
| 350 | - | - | IRS310-2510-350MX | IRS310-2512-350MX | - |
| 375 | - | - | IRS310-2510-375MX | IRS310-2512-375MX | - |
| 400 | IRS310-2504-400 | IRS310-2508-400MX | IRS310-2510-400MX | IRS310-2512-400MX | - |
| 425 | - | - | IRS310-2510-425MX | IRS310-2512-425MX | - |
| 450 | - | IRS310-2508-450MX | IRS310-2510-450MX | IRS310-2512-450MX | - |
| 475 | - | - | IRS310-2510-475MX | - | - |
| 500 | - | IRS310-2508-500MX | IRS310-2510-500MX | - | - |
| 525 | - | - | IRS310-2510-525MX | - | - |
| 550 | - | IRS310-2508-550MX | IRS310-2510-550MX | - | - |
| 600 | IRS310-2504-600 | IRS310-2508-600MX | - | - | - |
| 700 | - | IRS310-2508-700MX | - | - | - |



Two-Stage Stack Spring Kit

IRS310-30549

Typically used on the right front of Dirt Late Models, allows the car to initiate movement by starting with a softer spring prior to "hitting" a stack nut and utilizing a pre-determined stiffer spring. Adjustment is performed by changing the gap between the stack nut and slider.



Torque Link Springs

5" x 6-1/2" Tall

| Part No. | Rate |
|---------------------|----------|
| IRS310-5065-700 | 700 |
| IRS310-5065-800 | 800 |
| IRS310-5065-900 | 900 |
| IRS310-5065-1050 | 1050 |
| IRS310-5065-1200 | 1200 |
| IRS310-5065-1450 | 1450 |
| IRS310-5065-515PROG | 500-1500 |



Conventional MX Springs

Springs are made from durable, premium steel wire for exceptional durability. Black powder coated MX springs are etched with the given rate and guaranteed to maintain their rate within 2% of the original free height for as long as you own them.

Front Springs

| Rate | 5" x 9-1/2" Tall Part No. | 5-1/2" x 12" Tall Part No. | 5-1/2" x 9-1/2" Tall Part No. |
|------|---------------------------|----------------------------|-------------------------------|
| 400 | IRS310-5095-400 | - | IRS310-5595-400 |
| 450 | IRS310-5095-450 | - | IRS310-5595-450 |
| 500 | IRS310-5095-500 | - | IRS310-5595-500 |
| 550 | IRS310-5095-550 | - | IRS310-5595-550 |
| 600 | IRS310-5095-600 | IRS310-5512-600 | IRS310-5595-600 |
| 650 | IRS310-5095-650 | - | IRS310-5595-650 |
| 700 | IRS310-5095-700 | IRS310-5512-700 | IRS310-5595-700 |
| 750 | IRS310-5095-750 | - | IRS310-5595-750 |
| 800 | IRS310-5095-800 | IRS310-5512-800 | IRS310-5595-800 |
| 850 | IRS310-5095-850 | - | IRS310-5595-850 |
| 900 | IRS310-5095-900 | IRS310-5512-900 | IRS310-5595-900 |
| 950 | - | - | IRS310-5595-950 |
| 1000 | IRS310-5095-1000 | IRS310-5512-1000 | IRS310-5595-1000 |
| 1100 | - | IRS310-5512-1100 | IRS310-5595-1100 |
| 1200 | - | IRS310-5512-1200 | IRS310-5595-1200 |
| 1300 | - | IRS310-5512-1300 | - |
| 1400 | - | IRS310-5512-1400 | - |

Rear Springs

| Rate | 5" x 11" Tall Part No. | 5" x 13" Tall Part No. | 5" x 16" Tall Part No. |
|------|------------------------|------------------------|------------------------|
| 125 | IRS310-5011-125 | IRS310-5013-125 | - |
| 150 | IRS310-5011-150 | IRS310-5013-150 | IRS310-5016-150 |
| 175 | IRS310-5011-175 | IRS310-5013-175 | IRS310-5016-175 |
| 200 | IRS310-5011-200 | IRS310-5013-200 | IRS310-5016-200 |
| 225 | IRS310-5011-225 | IRS310-5013-225 | IRS310-5016-225 |
| 250 | IRS310-5011-250 | IRS310-5013-250 | IRS310-5016-250 |
| 275 | IRS310-5011-275 | IRS310-5013-275 | - |
| 300 | IRS310-5011-300 | IRS310-5013-300 | - |
| 325 | IRS310-5011-325 | IRS310-5013-325 | - |
| 350 | IRS310-5011-350 | IRS310-5013-350 | - |
| 375 | - | IRS310-5013-375 | - |



Front Springs



Rear Springs

| 5" Front Spring Applications |
|------------------------------|
| 1964-72 Chevelle |
| 1967-69 Camaro |
| 1968-74 Nova |
| Most Fords |

| 5-1/2" Front Spring Applications |
|----------------------------------|
| 1973-Up Chevelle |
| 1970-Up Camaro |
| 1975-Up Nova |

Professional Wireless Scale System

INT170127-WPC

RFX wireless system is certified to 0.1% accuracy, offering a secure, wireless connection with USB and RS232 output. Large, 1/2" backlit display characters are easily read. System has a target tune feature and can store 100 chassis set-ups, recall baseline set-up, calculate center of gravity and display user selectable modes. Four wireless, RFX billet 15" x 15" x 2-1/2", 1,500 lb. pads, SW777 wireless hand held indicator with ABS case, 2-1/2" pad storage case, 6' USB cable for PC, Race Car Management Record Keeping and Race Weigh PC Weighing software, USB PC radio, and AA alkaline batteries are included. PC and laptop not included. Two-year warranty.



SW650RFX Quik Weigh Wireless Scale System INT170126-W

Quik Weigh's integrated RFX wireless technology assures 0.1% accuracy and secure wireless communication. System has large, 1/2" backlit display characters, USB and RS232 output, and can store 100 chassis set-ups, recall baseline set-up, calculate center of gravity, display user selectable modes, and target tuning. Includes four wireless, RFX billet, 15" x 15" x 2-1/2", 1,500 lb. pads, one touch wireless indicator with case, Race Car Management software, AA alkaline batteries and a two-year warranty. PC not included.



SW787RFX Wireless PC Scale System

INT170154-PC

Popular system combines the benefits of a wireless weighing system with ultra accurate, billet scale pads. Integrated RFX wireless weighing technology allows transmitting data from the scale pads to a PC. Sold complete with one touch wireless indicator with case, Race Weigh PC software, four wireless, RFX billet 15" x 15" x 2-1/2", 1,500 lb. pads, USB PC radio, AA alkaline batteries and a two-year warranty. PC not included.



E-Z Weigh Cabled Scale System

INT170125

Intercomp's best selling scale system. Cabled E-Z Weigh Scale System uses large, easy-to-read display of weights and percentages, and is certified to 0.1% accuracy. Unit has a target tune feature and can display set-ups to one hundredth of a percent, store 100 chassis set-ups, recall baseline set-up, calculate center of gravity and display user selectable modes. Includes cabled indicator with case, four billet 15" x 15" x 2-1/2", 1,500 lb. capacity scales, 9-volt rechargeable battery and two-year warranty.



iRaceWeigh Module INT170250 **NEW!**

iRaceWeigh Module communicates directly with the Intercomp RFX Wireless and cabled Intercomp scales with RS232 output. Module uses iRaceWeigh App, a free download from iTunes, and allows users to view live weights, save weight data and export the information to a spreadsheet for future analysis or email reports. The module and app allows viewing data on the RFX Wireless Hand Held Indicator, an iPad, iPod, or iPhone. Data may also be viewed on a PC using RaceWeigh Software and a USB radio.



Scale Cart INT100346

A high quality aluminum scale cart complete with wheels. Cart holds four pads, cables, controller and has space for accessories.



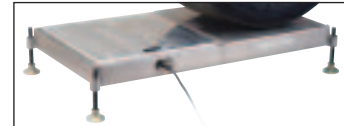
Scale Pad Case INT490197 **NEW!**

Heavy duty case, which is 17-3/4" x 17-3/4" x 13.5", includes special dividers to store four 2.5" scale pads.



Scale Pad Leveler With Roll-Off Pad INT170133

Lightweight aluminum leveler is designed to fit any 15" x 2.5" scale pads. Allows the car to be rolled off the scale pad and back on with little effort. Sold in sets of four.



Turn Plates INT102007

Manufactured from lightweight, aerospace aluminum, Intercomp turn plates allow taking several measurements that can be used for alignment including caster/camber and Ackerman. Traditional mechanical turn plates may be placed on top of scale pads and are 13" x 15" x 1.5" in size.



Digital Caster/Camber Gauge With Backlight

One of the industry's most up-to-date, digital caster/camber gauges indicates to 0.1° and has a +/-20° reading (up to 10 times the accuracy of conventional bubble gauges). Easy-to-use controls include: on/off, caster/camber select and zero adjust. Up to 100 hours on a standard 9 volt battery.



| Part No. | Description |
|-----------|---|
| INT100005 |Gauge With Magnetic Adapter and Carrying Case |
| INT100008 |Gauge With Carrying Case, Adapter Not Included |

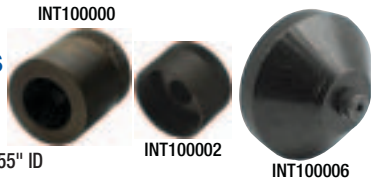
Billet Bubble Caster/Camber Gauge INT102010

Highly accurate gauge has easy-to-read bubble display and will measure -6 to +6° of camber and -8 to +8° of caster with 0.2° accuracy. Includes magnetic adapter and case.



Caster/Camber Gauge Adapters

Part No. Description
INT100000GM, .750"-20
INT100002Wide 5, 1.813"-16
INT100006Magnetic, 3" OD - 1.55" ID



Deluxe Air Pressure Gauges

Deluxe Air Gauges incorporate a patented internal mechanism which provides far more resilience to extreme punishment. Available in standard, glow-in-the-dark or liquid-filled, every unit includes a high quality thumb-operated bleeder and swivel nozzle on a 17" Goodyear hose. High visibility with major/minor graduation marks.



| Description | 0-15 PSI Part No. | 0-30 PSI Part No. | 0-60 PSI Part No. |
|-------------------------------|-------------------|-------------------|-------------------|
| Standard, 2" Dia. | INT360062 | INT360063 | INT360064 |
| Liquid-Filled, 2-1/2" Dia. | INT360065 | INT360066 | INT360067 |
| Glow-In-The-Dark, 2-1/2" Dia. | INT360068 | INT360069 | INT360070 |
| Glow-In-The-Dark, 4" Dia. | INT360058 | INT360059 | INT360060 |

Digital Air Pressure Gauge

Highly accurate, digital gauge includes easy-to-read 1/2" display, push button zero, thumb-operated bleed-off, backlit display for night use, 22" hose and 45° swivel air chuck. Offered in 0-100 and 0-150 PSI versions.

Part No. Description
INT360045 Digital Air Pressure Gauge, 0-100 PSI
INT360045-150.. Digital Air Pressure Gauge, 0-150 PSI **NEW!**



Memory Tire Pressure Gauge INT102058



Advanced tire pressure monitoring system features dual, digital backlit display of all pressures including OUT/COLD, IN/HOT and calculates GAIN, while compensating for changes in barometric pressure. Memory allows storing up to ten complete sets of pressures. Unit includes a standard RS232 output and operates on a standard, 9-volt battery. May be interfaced with #INT102065-R Race Car Management Software.

Digital Tire Durometer INT102091 **NEW!**

Digital durometer reads from 0-99.5 and includes both push button zero and peak hold functions. Sold complete with storage case.



Tire Durometer INT360092

Type-A hardness tester allows quickly checking tire compound. Gauge reads 0-100.



Digital Depth Gauge INT102081 **NEW!**

Billet aluminum based gauge with large digital display measures depths in .0005" increments with a range of 0-.250" and accuracy of +/- .001". Sold complete with case.



Tire Humidity/Temperature Meter INT360036 **NEW!**

Meter measures relative humidity and temperature (F° or C°) inside of tire. Includes valve stem adapter. Powered by a 9-volt battery.

Infrared Pyrometer INT360018-E

Infrared pyrometer provides quick temperature readings. Point, and squeeze trigger to check temperature of rotors, tires, fluids, etc. Displays from -58° to 1,022° F. Sold complete with carrying case.



Memory Tire/Brake Pyrometer INT102034

Faster and more accurate, with a display clear enough so anyone can make correct chassis adjustments. Displays outside, middle and inside temperatures of each tire as well as average temperatures. Four brake temperatures may be entered to calculate front/rear bias. Capable of storing information from up to ten test sessions for recall and comparison.



Lap Timer System INT360050

Lightweight, compact and easy-to-use, lap timer features single button operation. Unit indicates lap number every lap, while 250-lap memory stores laps cumulatively up to one hour in length for later recall. Serial output allows sending lap times to a printer, computer or data logger. Powered by a standard, 9-volt battery.



Digital Shock Inflation And Pressure Gauge INT100675 *NEW!*

Allows quick, easy shock pressure settings up to 300 PSI in 0.5 lb. increments. Gauge is compatible with most shocks and includes a thumb-operated bleeder to achieve desired pressure. Standard with "Schrader" valve adapter for Penske-style valve, while a needle adapter is available for Ohlins-style.



Analog Shock Inflation And Pressure Gauge INT100675-A

Specialized gauge allows monitoring pressure during the shock inflation process. Liquid-filled unit has a range of 0-300 PSI and 0-20 BAR.



Digital Angle Gauge INT102144 *NEW!*

Angle gauge features a large LCD display and offers quick, accurate angle measurements from 0° to 90° in .5° increments. Magnetic back and sides allows hands-free operation. Backlit for night use, unit is powered by a 9-volt battery.



Coil Spring Tester INT100059

Portable spring tester features a large, 1/2" tall digital display that indicates force and travel. Unit has the ability to check flat/coil-over springs up to 6" dia. and 18" tall, and uses a quick, single-pin vertical adjustment. Tester, which has a 5,000 lb. capacity, is powered by a 9-volt battery.



Coil-Over Spring Tester INT110060 *NEW!*

New, improved Coil-Over Spring Tester, which includes a 5,000 lb. load rating, features an increased, 31" height and over 10.5" of digital travel readings, allowing shocks to be tested without having to adjust preload. Test coil-over springs, shocks, 5th coils, bump stops, etc., while pull or spring bars may also be tested with optional accessories.



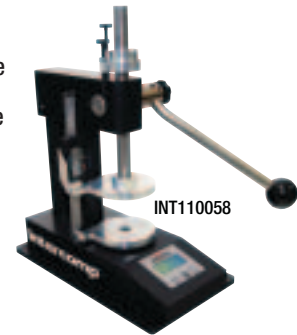
Valve Spring Tester INT100058

Designed specifically for valve, clutch, shock and pressure springs up to 2" dia. with up to 4" of travel, portable spring tester uses a digital display to provide readouts of force and travel, and a peak hold feature. Powered by a 9-volt battery, unit includes a 1,000 lb. capacity.



Arbor Valve Spring Tester *NEW!*

Tester utilizes a digital readout to display from 0-1,500 lbs. in 1.0 lb. increments. Unit includes two adjustable test stops, 2" O.D. spring capacity and 5" travel capacity. Backlit for night use and powered by a 9-volt battery. May also be used for checking bump stops with optional adapter.



| Part No. | Description |
|-----------|---------------------------|
| INT110058 | Arbor Valve Spring Tester |
| INT110065 | Bump Stop Adapter, .500" |
| INT110066 | Bump Stop Adapter, .625" |
| INT110067 | Bump Stop Adapter, 14mm |
| INT110068 | Bump Stop Adapter, 15mm |
| INT110069 | Bump Stop Adapter, 16mm |

ISKY RACING CAMS



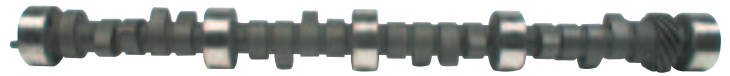
Hydraulic Series Camshafts For SB Chevy

Isky Hydraulic Series offers a wide selection of cam profiles to adhere to a variety of track rules.

| Part No. | Application | Grind | RPM Range | Valve Lift | Advertised Duration | Duration @ .050" | Lobe Center |
|-----------------|--|--------------|-----------|-------------|---------------------|------------------|-------------|
| ISK201SL1 | Stock Lift Classes, Slight Bank 1/4-3/8 Mile Tracks | SL-1 | 2000-6500 | .390"/.410" | 268°/272° | 228°/232° | 108° |
| ISK201SL1/14 | Stock Lift/Vacuum Rule (16" @ 1,000 RPM) | SL-1 | 2400-6600 | .390"/.410" | 268°/272° | 228°/232° | 114° |
| ISK201SL2 | Stock Lift Classes, Banked 3/8-1/2 Mile Tracks | SL-2 | 2400-6800 | .390"/.410" | 276°/280° | 236°/240° | 106° |
| ISK201LR1 | .420" Lift Rule Class, Slight Bank 1/4-3/8 Mile Tracks | LR-1 | 2000-6200 | .415" | 264° | 224° | 107° |
| ISK201LR2 | .420" Lift Rule Class, Banked 1/4-3/8 Mile Tracks | LR-2 | 2400-6600 | .415" | 272° | 232° | 106° |
| ISK201LR3 | .420" Lift Rule Class, Banked 3/8-1/2 Mile Tracks | LR-3 | 2500-6800 | .415" | 280° | 240° | 106° |
| ISK201268 | .450" Lift Rule Class, Slight Bank 1/4-3/8 Mile Tracks | 268-Mega | 2000-6400 | .450" | 268° | 224° | 107° |
| ISK201271 | Hobby/Street Stock Classes, 1/4-3/8 Mile Tracks, 2BBL Carb | 270-Mega | 2000-6200 | .465" | 270° | 221° | 108° |
| ISK201274* | 2BBL Hobby/Street Stock, Banked 1/4-3/8 Mile Track | 274-Mega | 2200-6500 | .490" | 274° | 226° | 108° |
| ISK201278 | .450" Lift Rule Class, Banked 1/4-3/8 Mile Tracks | 278-Mega | 2500-6800 | .450" | 278° | 234° | 106° |
| ISK201281/6 | Hobby/Street Stock, Banked 1/4-3/8 Mile Tracks | 280-Mega | 2500-6800 | .485" | 280° | 232° | 106° |
| ISK201284/292-6 | Sportsman Classes, Banked 3/8-1/2 Mile Tracks, Any Carb | 284/292 Mega | 2700-7000 | .510"/.505" | 284°/292° | 236°/244° | 106° |
| ISK201288 | Street Stock/IMCA, High Banked 3/8-1/2 Mile Tracks | 288-Mega | 2800-7000 | .450" | 288° | 244° | 106° |
| ISK201292/6 | Sportsman Classes, Banked 3/8-1/2 Mile Tracks, Any Carb | 292-Mega | 2800-7000 | .505" | 292° | 244° | 106° |
| ISK201296/6 | Sportsman, 1/2 Mile High Banked Track, Any Carb | 296-Mega | 3000-7200 | .530" | 296° | 248° | 106° |

Note: Please see following page for recommended components.

** Also available in kit form by ordering ISKCL201274. Kit includes ISK201274 camshaft, "Quiet Power" hydraulic lifters, Rev-Lube installation lubricant and instructions.*



Flat Tappet Series Camshafts For SB Chevy

Isky Flat Tappet Series Cams are designed for Sportsman, UMP, WISSOTA, and IMCA classes where reasonably priced cams producing good overall power and torque are necessary.

| Part No. | Application | Grind | RPM Range | Valve Lift | Hot Lash | Advertised Duration | Duration @ .050" | Lobe Center |
|-----------|--|---------|-----------|-------------|-------------|---------------------|------------------|-------------|
| ISK201524 | 1/4-3/8 Mile Tracks, No Bank-2BBL | 524 | 2400-6600 | .524"/.534" | .016"/.018" | 278°/282° | 244°/248° | 106° |
| ISK201535 | Late Model Stock, 1/2-5/8 Mile Tracks, Restricted Intake | 535/246 | 2400-6600 | .535" | .014"/.016" | 274° | 246° | 108° |
| ISK201536 | Banked 1/4-3/8 Mile Tracks, 5.7-5.85" Rod Length | 535-A | 2400-6800 | .535"/.545" | .014"/.016" | 274°/278° | 246°/250° | 106° |
| ISK201544 | Restricted Intake Classes, Late Model Stock | 545 | 2500-6700 | .545" | .014"/.016" | 278° | 250° | 108° |
| ISK201534 | Flat 1/4-3/8 Mile Tracks | 534-A | 2600-6800 | .534"/.525" | .016"/.018" | 282°/288° | 248°/254° | 106° |
| ISK201546 | 3/8-1/2 Mile Tracks, 5.70"-5.85" Rod Length | 545-A | 2600-7000 | .545"/.555" | .014"/.016" | 278°/282° | 250°/254° | 106° |
| ISK201556 | High Banked 1/2 Mile, 5.70"-5.85" Rod Length | 555-A | 2800-7200 | .555"/.565" | .014"/.016" | 282°/286° | 254°/258° | 106° |
| ISK201547 | Banked 1/4-3/8 Mile Tracks | 547-A | 3000-7000 | .547"/.548" | .016"/.018" | 288°/292° | 254°/259° | 106° |
| ISK201549 | Banked 3/8-1/2 Mile Tracks, Broad Power | 547-B | 3000-7000 | .547"/.555" | .016"/.016" | 288°/296° | 258°/263° | 106° |
| ISK201CC1 | Banked 1/4-3/8 Mile Tracks | CC-1 | 3000-6800 | .525"/.520" | .016"/.018" | 290°/296° | 254°/260° | 106° |
| ISK201CC2 | Banked 1/2 Mile Tracks | CC-2 | 3200-7000 | .525"/.545" | .016"/.026" | 290°/304° | 254°/264° | 106° |
| ISK201571 | High Banked 1/2 Mile, 5.7-5.85" Rod Length | 570-A | 3000-7600 | .570"/.580" | .014"/.016" | 286°/290° | 258°/262° | 106° |
| ISK201581 | High Banked 1/2-3/8 Mile Tracks, 5.7-5.85" Rod Length | 580-A | 3200-7800 | .580"/.585" | .014"/.016" | 290°/294° | 262°/266° | 106° |

Roller Series Camshafts For SB Chevy

Isky's roller camshafts are engineered for late models and modifieds.



| Part No. | Application | Grind | RPM Range | Valve Lift | Hot Lash | Advertised Duration | Duration @ .050" | Lobe Center |
|-----------|---|--------|-----------|-------------|-------------|---------------------|------------------|-------------|
| ISK201652 | Dirt Late Models, 3/8-1/2 Mile Tracks | RR-652 | 3800-7400 | .650"/.645" | .024"/.028" | 286°/298° | 256°/264° | 106° |
| ISK201653 | Dirt Late Models, High Banked 1/2 Mile | RR-653 | 4000-7600 | .650"/.645" | .024"/.028" | 290°/302° | 260°/268° | 106° |
| ISK201643 | Dirt Late Models, Med. Bank 1/2 Mile Tracks | RR-640 | 4200-7400 | .640" | .028"/.028" | 294°/302° | 260°/268° | 106° |

Recommended Components

For Use With Hydraulic Series Cams

Lifters ISK202-HY
 Springs ISK205-D, ISK6005
 Retainers ISK707-ST, ISK507-ST
 Locks ISKVL-11/32

For Use With Flat Tappet Series Cams

Lifters ISK202-H
 Springs ISK6105, ISK235-D
 Retainers ISK507-ST, ISK707-STA
 Locks ISKVL-11/32

For Use With Roller Series Cams

Lifters ISK1241-LSH
 Springs ISK9315 / ISK9365
 Retainers ISK507-STA
 Locks ISKVL-11/32

Chevy Anti-Pump-Up Hydraulic Superlifters ISK202-HY

Isky Superlifters allow use of a more radical hydraulic camshaft without loss of compression and horsepower from valves being left off of their seats. Fits all Chevrolet V-8's. Sold in sets of 16.



Solid Lifters

Hardenable iron and special oiling solid lifters for Chevy and Ford. Special oiling lifters have a .024" oil hole EDM-machined through the cam face for extended cam life. Sold in sets of 16.

| Part No. | Description |
|-----------------|--------------------------------|
| ISK202-H..... | Chevrolet V-8, Hardenable Iron |
| ISKS0202-H..... | Chevrolet V-8, Special Oiling |
| ISKS0382-H..... | Ford V-8, Special Oiling |
| ISK462-A..... | Ford 2300cc 4 Cylinder |



Endurance Plus Mechanical Roller Lifters

Isky Endurance Plus Roller Lifters feature TruTrac needle roller bearings, a non-skid textured surface, premium 4340 steel pins, and "parabolic" profile, crowned outer bearing races for long, trouble-free life. Sold in sets of 16.

| Part No. | Description |
|---------------------|--|
| ISK1241-LO-150..... | SB Chevrolet 262-400, .150" Offset, Steel Body With Aluminum Top |
| ISK1241-LO-185..... | SB Chevrolet 262-400, .185" Offset, Steel Body With Aluminum Top |
| ISK1241-LSH..... | SB Chevrolet 262-400, Centerline, Steel Body With Aluminum Top |



Red-Zone Maximum Endurance Mechanical Roller Lifters

Lifters are manufactured using Marathon roller bearings, which use larger diameter pins and thicker, shock absorbing outer races for improved durability. Lifters include smooth finished alloy steel bodies, which repel scuffing, and full spectrum, three-point oiling system. Sets of 16.

| Part No. | Description |
|---------------------|---|
| ISK1271-LSH..... | SB Chevy, .842" Dia., Aluminum Top, Centerline |
| ISK1271-LO-150..... | SB Chevy, .842" Dia., Aluminum Top, (8) Centerline, (4) Each .150" LH and RH Offset |
| ISK1271-LO-185..... | SB Chevy, .842" Dia., Aluminum Top, (8) Centerline, (4) Each .185" LH and RH Offset |



Rev-Lube ISKRL-100

Ideally used as an assembly lubricant during hydraulic or solid camshaft "break-in", original formula Rev-Lube uses Moly-Sulphide with organic and synthetic polymers to prevent "dry start-up". Sold in 1 lb. container.





Valve Springs

| Part No. | Type | Color Code | Outer O.D./I.D. | Inner O.D./I.D. | Seat Pressure | Open Pressure | Rate Per In. | Coil Bind | Max. Net Lift |
|------------|--------------------|---------------------|-----------------|-----------------|---------------|---------------|--------------|-----------|---------------|
| ISK205-D | Single With Damper | Yellow | 1.260" | .886" | 115 @ 1.700" | 268 @ 1.210" | 310 | 1.160" | .490" |
| ISK235-D | Single With Damper | Blue | 1.260" | .886" | 130 @ 1.750" | 320 @ 1.200" | 350 | 1.150" | .550" |
| ISK6005 | Dual With Damper | Blue/Orange/Yellow | 1.005"/1.430" | .730"/1.070" | 135 @ 1.750" | 285 @ 1.200" | 275 | 1.120" | .550" |
| ISK6105 | Dual With Damper | Red/Orange/Yellow | 1.000"/1.430" | .730"/1.070" | 135 @ 1.812" | 315 @ 1.260" | 330 | 1.120" | .550" |
| ISK6205 | Dual With Damper | Orange/Yellow | 1.005"/1.430" | .725"/1.070" | 175 @ 1.812" | 330 @ 1.325" | 320 | 1.160" | .550" |
| ISK8005-A | Dual With Damper | Blue/Orange/Yellow | 1.005"/1.530" | .730"/1.110" | 135 @ 1.875" | 395 @ 1.225" | 400 | 1.160" | .650" |
| ISK8005-SP | Dual With Damper | Blue/Orange/Yellow | 1.005"/1.530" | .730"/1.110" | 150 @ 1.875" | 435 @ 1.225" | 415 | 1.160" | .650" |
| ISK8305 | Dual With Damper | Natural | 1.005"/1.510" | .730"/1.110" | 160 @ 1.875" | 380 @ 1.275" | 370 | 1.175" | .600" |
| ISK8205 | Dual With Damper | Orange/Yellow/Brown | 1.005"/1.530" | .730"/1.110" | 140 @ 1.900" | 430 @ 1.250" | 440 | 1.170" | .650" |
| ISK9205 | Dual With Damper | Purple | 1.040"/1.550" | .755"/1.130" | 170 @ 1.950" | 475 @ 1.250" | 435 | 1.175" | .675" |
| ISK9265 | Dual With Damper | Natural/Yellow | 1.005"/1.430" | .725"/1.115" | 175 @ 1.875" | 510 @ 1.200" | 490 | 1.130" | .675" |

Endurance 9000 Series Valve Springs

High Endurance™ Valve Springs

Test proven for 700 racing miles, Isky High Endurance Valve Springs are wound from "super clean" chrome silicone wire. Perfect for late models, modifieds and other race cars running up to 8000 RPM. Sold in sets of 16.

| Part No. | Type | Color Code | Outer O.D./I.D. | Inner O.D./I.D. | Seat Pressure | Open Pressure | Rate Per In. | Coil Bind | Max. Net Lift |
|------------|------------------|------------|-----------------|-----------------|---------------|---------------|--------------|-----------|---------------|
| ISK8205-SP | Dual With Damper | Natural | 1.530"/1.110" | .730"/1.005" | 150 @ 1.900" | 440 @ 1.300" | 480 | 1.150" | .650" |
| ISK9315 | Dual With Damper | Red | 1.550"/1.025" | .740"/1.035" | 210 @ 1.900" | 520 @ 1.240" | 480 | 1.130" | .660" |
| ISK9365 | Dual With Damper | Green | 1.550"/1.135" | .740"/1.025" | 220 @ 1.950" | 550 @ 1.270" | 460 | 1.170" | .680" |
| ISK9365-SP | Dual With Damper | Green | 1.550"/1.135" | .740"/1.025" | 225 @ 1.950" | 550 @ 1.270" | 460 | 1.170" | .680" |
| ISK9385 | Dual With Damper | Yellow | 1.560"/1.040" | .740"/1.145" | 240 @ 2.000" | 600 @ 1.250" | 500 | 1.180" | .720" |

Endurance Plus™ Valve Springs

Test proven for 850 racing miles, Endurance Plus Springs feature a higher alloy outer spring "plus" special processing for increased durability. Excellent for use in sprint cars, super modifieds, super late models, road racing and other race cars running up to 8400 RPM. Sold in sets of 16.

| Part No. | Type | Color Code | Outer O.D./I.D. | Inner O.D./I.D. | Seat Pressure | Open Pressure | Rate Per In. | Coil Bind | Max. Net Lift |
|-------------|------------------|-----------------------|-----------------|-----------------|---------------|---------------|--------------|-----------|---------------|
| ISK8005PLUS | Dual With Damper | - | 1.530"/1.110" | 1.005"/.730" | 140 @ 1.875" | 400 @ 1.275" | 420 | 1.160" | .650" |
| ISK8205PLUS | Dual With Damper | - | 1.530"/1.110" | 1.005"/.730" | 150 @ 1.900" | 420 @ 1.300" | 440 | 1.120" | .650" |
| ISK9365PLUS | Dual With Damper | Green/Silver/Orange | 1.560"/1.040" | 1.145"/.740" | 235 @ 1.950" | 560 @ 1.270" | 470 | 1.170" | .680" |
| ISK9375PLUS | Dual With Damper | Natural/Silver/Orange | 1.560"/1.040" | 1.145"/.740" | 230 @ 1.970" | 560 @ 1.290" | 480 | 1.190" | .680" |
| ISK9385PLUS | Dual With Damper | Natural/Silver/Red | 1.560"/1.040" | 1.145"/.740" | 245 @ 2.000" | 600 @ 1.280" | 500 | 1.180" | .720" |

Precision Tool Room™ Valve Springs

Test proven for 1000 racing miles, Isky Precision Tool Room Valve Springs feature the highest quality alloy wire and trade secret endurance processing. Great for super modifieds, ARCA, Busch GN, Craftsman Truck, Nextel Cup, and applications up to 8800 RPM. Sold in sets of 16.

| Part No. | Type | Color Code | Outer O.D./I.D. | Inner O.D./I.D. | Seat Pressure | Open Pressure | Rate Per In. | Coil Bind | Max. Net Lift |
|----------|--------------------|------------|-----------------|-----------------|---------------|---------------|--------------|-----------|---------------|
| ISK295-D | Single With Damper | - | 1.260"/.886" | - | 135 @ 1.775" | 350 @ 1.175" | 360 | 1.100" | .600" |
| ISK9905 | Dual With Damper | Gold | 1.534"/1.120" | 1.010"/.740" | 165 @ 1.900" | 450 @ 1.300" | 475 | 1.160" | .600" |
| ISK9935 | Dual Damperless | Gold | 1.560"/1.155" | 1.153"/.820" | 245 @ 1.950" | 590 @ 1.250" | 490 | 1.150" | .700" |
| ISK9945 | Dual With Damper | Gold | 1.625"/1.175" | 1.065"/.770" | 250 @ 2.020" | 675 @ 1.270" | 550 | 1.180" | .750" |
| ISK9965 | Dual With Damper | Gold | 1.560"/1.145" | 1.040"/.740" | 245 @ 1.950" | 585 @ 1.270" | 470 | 1.170" | .680" |
| ISK9975 | Dual With Damper | Gold | 1.560"/1.145" | 1.040"/.740" | 245 @ 1.970" | 585 @ 1.290" | 480 | 1.190" | .680" |
| ISK9985 | Dual With Damper | Gold | 1.560"/1.145" | 1.040"/.740" | 245 @ 2.000" | 600 @ 1.300" | 500 | 1.200" | .700" |
| ISK9995 | Dual With Damper | Gold | 1.570"/1.145" | 1.035"/.740" | 250 @ 2.030" | 625 @ 1.300" | 510 | 1.200" | .730" |

RAD-9000 Precision Tool Room Valve Springs

Isky Precision Tool Room Valve Spring taken one step further. Springs have undergone Radial-Densification (RAD), which further modifies the springs' physical properties. Designed for endurance oval track racing, RAD-9000 springs are sold in sets of 16.

| Part No. | Type | Outer O.D./I.D. | Inner O.D./I.D. | Seat Pressure | Open Pressure | Rate Per In. | Coil Bind | Max. Net Lift |
|-------------|------------------|-----------------|-----------------|---------------|---------------|--------------|-----------|---------------|
| ISK9945-RAD | Dual With Damper | 1.625"/1.175" | 1.065"/.770" | 250 @ 2.020" | 675 @ 1.270" | 550 | 1.180" | .750" |
| ISK9955-RAD | Dual With Damper | 1.625"/1.175" | 1.065"/.770" | 265 @ 2.120" | 700 @ 1.320" | 545 | 1.240" | .800" |
| ISK9985-RAD | Dual With Damper | 1.650"/1.145" | 1.040"/.740" | 245 @ 2.000" | 600 @ 1.300" | 500 | 1.200" | .700" |
| ISK9988-RAD | Dual With Damper | 1.570"/1.145" | 1.040"/.745" | 250 @ 2.000" | 660 @ 1.250" | 550 | 1.150" | .750" |
| ISK9995-RAD | Dual With Damper | 1.570"/1.145" | 1.040"/.740" | 250 @ 2.030" | 625 @ 1.300" | 510 | 1.200" | .730" |
| ISK9998-RAD | Dual With Damper | 1.600"/1.150" | 1.040"/.745" | 250 @ 2.050" | 735 @ 1.250" | 600 | 1.160" | .800" |
| ISK9999-RAD | Dual With Damper | 1.600"/1.150" | 1.040"/.745" | 250 @ 2.000" | 770 @ 1.200" | 650 | 1.150" | .800" |

Valve Locks

Locks are machined from 4140 chrome moly bar stock and heat treated. Available in 7° and 10° styles. The "Super 7°" locks have a precisely ground outside diameter to provide a more consistent installed height and are engineered for endurance oval track applications. Sold in sets of 16 (32 pieces).



Part No. **Description**

7° Valve Locks

ISKVL-11/32.....For 11/32" Valve Stems, SB Chevy, SB Ford

"Super 7°" Valve Locks

ISKVL-700.....For 11/32" Valve Stems, SB Chevy, SB Ford

ISKVL-750.....For 11/32" Valve Stems, +.050" Higher Installed Height, SB Chevy, SB Ford

10° Valve Locks

ISKVL10-11/32..For 11/32" Valve Stems, SB Chevy, SB Ford

Steel Valve Spring Retainers

4130 chrome moly steel retainers are ideal for most oval track applications. Sold in sets of 16.



Part No. **Spring Application**

ISK275-ST.....9315, 9365, 9365-SP, 9365, 9385, 9965, 9975, 9985, 9995

ISK507-ST.....6005, 6105, 6205

ISK507-STA.....6205, 8005-A

ISK707-ST.....205-D

ISK707-STA.....235-D, 295-D

Titanium Valve Spring Retainers

Retainers are 20-40% stronger and significantly lighter than common steel retainers. 100% aircraft quality titanium bar stock is used in the manufacture of the retainers. Sold in sets of 16.



Part No. **Description**

ISK90-TI/10DEG..... 10° Retainers, Use With 10° Valve Locks and Springs 8005-A, 8205, 8305, 9205, 9315, 9365, 9365-SP, 9385, 9965, 9975, 9985 and 9995.

ISK91-TI..... 7° Retainers, Use With Springs 8005-A, 8205, 8305, 9000, 9205, 9315, 9365, 9365-SP and 9385.

Adjustable Guide Plates

Plates minimize modifications to high-performance cylinder heads when intake ports have been relocated. Easily adjusted inward or outward with grind centers for a closer setting. For more stability, plates can be welded once final adjustments have been made. Fits SB Chevy and 90° V-6. Packaged in sets of 8 pair.



Part No. **Description**

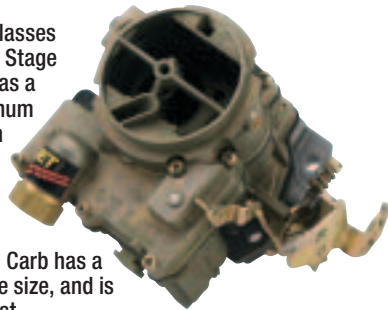
ISK200-AGP..... 5/16" Dia. Pushrods

ISK300-AGP..... 3/8" Dia. Pushrods



Stage 1 Rochester 2BBL Carburetor JET37001

Designed for circle track classes requiring a Rochester 2BBL. Stage 1 carb flows 500 CFM and has a custom fuel curve for maximum performance. Carb has been modified to use Holley style jets, incorporates a large, .130" dia. needle and seat assembly, and a small float for increased bowl capacity. Carb has a 1-3/8" venturi, 1-11/16" bore size, and is designed to pass a gauge test.



Circle Track Rochester Quadrajets 4BBL Carburetor JET35004

Built exclusively for circle track racing, Rochester Quadrajets carburetor is designed for 355-406 cu. in. small blocks with 11.5:1 compression, 250° @ .050" minimum camshaft duration with .525" + valve lift, single plane manifold and headers. Unit has been thoroughly reworked by increasing main well size, installing a large, .149" needle and seat assembly, and custom tailoring the fuel curve.



Jerry Rice

Photo By: Jim DenHamer



Bob Blount Racing/Jeff Ganus

Photo By: John Berglund



Circle Track Fuel Cells

Circle track cells have 3" raised filler necks with a large bail handle on the cap and a fuel pickup hose located at the right rear of the cell. One -8AN pickup and one -8AN vent or return line are located on top of the cells. Cells are filled with safety foam.

| Part No. | Capacity | Size |
|---------------|-----------|-------------------------|
| JAZ200-008-01 | 8 Gallon | 20" x 15" x 7-1/2" |
| JAZ200-010-01 | 10 Gallon | 25" x 9" x 12" |
| JAZ200-012-01 | 12 Gallon | 17-1/2" x 16" x 10" |
| JAZ200-016-01 | 16 Gallon | 25" x 17" x 10" |
| JAZ200-116-01 | 16 Gallon | 18-1/2" x 18-1/2" x 12" |
| JAZ200-122-01 | 22 Gallon | 33" x 17-3/4" x 10" |
| JAZ200-222-01 | 22 Gallon | 25" x 17" x 14" |

Pro Sport Fuel Cells With Flapper/Fill Valve

Pro Sport cells include an IMCA-accepted cast aluminum fill valve with spring loaded flapper for roll-over protection, and bail handled steel fill cap for quick, easy filling. Seamless polyethylene cells are housed in red powder coated steel containers and filled with aviation foam. Cells use -8AN fuel pick-up and -8AN tip over valve vent.



| Part No. | Capacity | Size |
|---------------|-----------|-----------------------------|
| JAZ275-008-06 | 8 Gallon | 20-5/8" x 15-1/2" x 8-3/8" |
| JAZ275-012-06 | 12 Gallon | 18" x 16-1/2" x 10-1/2" |
| JAZ275-016-06 | 16 Gallon | 26" x 18" x 10" |
| JAZ275-116-06 | 16 Gallon | 19" x 19" x 12-1/2" |
| JAZ275-222-06 | 22 Gallon | 25-3/4" x 17-3/8" x 14-1/2" |

Pro Sport Fuel Cells

Seamless polyethylene cells are housed in red powder coated steel containers and filled with aviation foam (. Cells have D-ring bail handle cap assembly with check valve vent. All cells listed include -8AN fuel pick-up and -8AN tip over valve vent.



| Part No. | Capacity | Size |
|----------------|-----------|-----------------------------|
| JAZ270-008-06 | 8 Gallon | 20-5/8" x 15-1/2" x 8-3/8" |
| JAZ270-012-06 | 12 Gallon | 18" x 16-1/2" x 10-1/2" |
| JAZ270-016-06 | 16 Gallon | 26" x 18" x 10" |
| JAZ270-116-06 | 16 Gallon | 19" x 19" x 12-1/2" |
| JAZ270-132-06* | 32 Gallon | 26-5/8" x 18-5/8" x 18-5/8" |
| JAZ270-222-06 | 22 Gallon | 25-3/4" x 17-3/8" x 14-1/2" |

* Has a -8AN pickup and a -8AN vent on top.

Pro Sport Specialized Fuel Cells

Pro Sport Specialized Cells use red or white powder coated, 20 gauge welded steel containers that include seamless, cross-linked polyethylene inner shells, D-ring bail handle cap assemblies, -10AN fuel pickups, -8AN tip-over valve vents and -8AN return fittings. Top pickup hose is routed to right rear corner. Cells are offered with or without aviation safety foam.



JAZ270-332-NF5

| Part No. | Description | Capacity | Size |
|----------------|------------------------------|---------------------|-----------------------------|
| JAZ270-332-NF | Red Container, Bottom Feed | 32 Gallon (No Foam) | 26-5/8" x 18-5/8" x 18-5/8" |
| JAZ270-332-NF5 | White Container, Bottom Feed | 32 Gallon (No Foam) | 26-5/8" x 18-5/8" x 18-5/8" |
| JAZ270-532-NF | Red Container, Top Feed | 32 Gallon (No Foam) | 26-5/8" x 18-5/8" x 18-5/8" |
| JAZ270-532-NF5 | White Container, Top Feed | 32 Gallon (No Foam) | 26-5/8" x 18-5/8" x 18-5/8" |
| JAZ270-622-NF | Red Container, Top Feed | 22 Gallon (No Foam) | 25" x 16-3/4" x 17" |

32-Gallon Tear Drop Fuel Cell

JAZ275-632-06

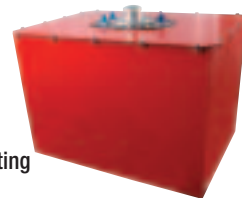
Designed specifically for dirt oval track cars, tear drop style cell offers improved weight distribution and features a red powder coated steel can, -10AN aluminum pickup tube, -8AN vent/roll-over valve and -8AN return. Cell, which is 24-3/4" W. x 20" H. x 23" L., uses an aluminum flapper/foot valve for added roll-over protection and a steel cap. Dip stick access is provided through the fill plate. Filler assembly uses the standard JAZ 12-bolt pattern. Mounting strap kit offered separately.



Part No. JAZ400-632-03..... **Description** Tear Drop Cell Mounting Straps, Pair

Pro Max Fuel Cells

Aluminum filler plate is 6" x 10" with spring-loaded flapper valve and twist lock cap. Seamless polyethylene inner shell is housed in a red (unless specified) powder coated, 20 gauge steel container. Cells include a -10AN fuel pickup, -8AN return fitting and -8AN tip-over valve vent.



| Part No. | Capacity | Size |
|---------------|---------------------|-----------------------------|
| JAZ285-226-05 | 26 Gallon (White) | 25-1/4" x 16-7/8" x 17-1/4" |
| JAZ285-226-06 | 26 Gallon | 25-1/4" x 16-7/8" x 17-1/4" |
| JAZ285-332-06 | 32 Gallon | 26-5/8" x 18-5/8" x 18-5/8" |
| JAZ285-332-NF | 32 Gallon (No Foam) | 26-5/8" x 18-5/8" x 18-5/8" |

Fuel Cell Tip-Over Valves

Prevents fuel spillage in the event of a roll-over.

Part No. JAZ834-006-11 **Description** -6AN Tip Over Valve
 JAZ834-008-11 -8AN Tip Over Valve
 JAZ834-206-06 -6AN External Tip Over Valve
 JAZ834-208-06 -8AN External Tip Over Valve



Fast Flow Fuel Cell Fittings

Fully radiused, Fast Flow Fuel Cell Fittings include bulkhead nuts and poly washers. Poly washers are also available separately.

| Size | Fuel Cell Fitting Part No. | Poly Washer Part No. |
|-------|----------------------------|----------------------|
| -6AN | JAZ832-106-11 | JAZ850-506-04 |
| -8AN | JAZ832-108-11 | JAZ850-508-04 |
| -10AN | JAZ832-110-11 | JAZ850-510-04 |
| -12AN | JAZ832-112-11 | JAZ850-512-04 |
| -16AN | JAZ832-116-11 | JAZ850-516-04 |



Flapper/Fill Valve

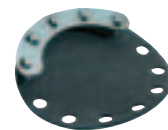
IMCA accepted, cast aluminum fill valve features a spring-loaded flapper for roll-over protection so that it may be used to update existing fuel cells to meet current sanctioning body rules. Fill valve has popular JAZ 12-bolt pattern, and is offered with choice of steel bail handled or plastic cap.

Part No. JAZ390-004-01 **Description** Flapper/Fill Valve, Steel Cap
 JAZ390-004-06 Flapper/Fill Valve, Plastic Cap



5-Bolt Flapper JAZ315-105-03

Flapper mounts under 12-bolt bail handle fuel caps, sealing the cap in the event of a rollover and reducing the chance of fuel leakage from the cap. Sold complete with necessary hardware and instructions.





JAZ350-201-60

Fuel Cell Components

| Part No. | Description |
|---------------------------------|--|
| JAZ305-051-03..... | Aluminum Bat Wing Pick-Up, -8AN |
| JAZ305-052-03..... | Aluminum Bat Wing Pick-Up, -10AN |
| JAZ315-030-03..... | Split Nut Ring, Allows Installation of Fast Fill Valves |
| JAZ345-250-03 And JAZ345-225-03 | |
| JAZ340-025-03..... | Replacement Cap for Pro Max Cell |
| JAZ340-200-06..... | Replacement Flush Mount Cap Only |
| JAZ340-300-09..... | Bail Handle Cap Only |
| JAZ345-225-03..... | 45° Fast Fill Valve, 2-1/4" O.D., Requires JAZ315-030-03 |
| JAZ350-201-06..... | Replacement Flush Mount Cap Assembly, 6-Bolt |
| JAZ350-250-03..... | Fender Filler, Recessed With 2-1/2" Hose Nipple |
| JAZ350-301-03..... | Bail Handle Cap and Filler Neck |
| JAZ850-300-01..... | Bail Handle Cap Gasket |

Fuel Funnels

Standard Triangular JAZ550-014-06

14" triangular shape allows easy filling against a bulkhead. 3-step spout may be cut off for different rates of flow. 17" long. Accepts filter JAZ500-000-01.



Large Triangular JAZ550-016-06

16" triangular funnel is similar to the standard funnel, but with a larger capacity and a tapered spout for different flow rates. 22" long. Accepts filter JAZ500-000-01.



Go Deep JAZ560-014-06

Ideal for automatic transmissions, 7" x 14" funnel has a built-in handle, anti-splash ring and 30" long, tapered spout. Accepts filter JAZ500-000-01.



Filter Insert JAZ500-000-01

60-micron stainless steel screen is easily removed for cleaning. O-ring is set into a molded-in groove to provide a tight seal. Fits above funnels.



Overflow Catch Cans

Molded one-piece, one quart catch can has unique swivel elbow input and a lever handle petcock for draining. Easily mounted with two molded-in 1/4"-20 threaded inserts.



| Black Part No. | Clear Part No. | Red Part No. | Orange Part No. | Blue Part No. |
|----------------|----------------|---------------|-----------------|---------------|
| JAZ600-025-01 | JAZ600-025-05 | JAZ600-025-06 | JAZ600-025-07 | JAZ600-025-11 |

Note: May be mounted using Allstar ALL14200 or ALL14201 brackets

Crankcase Breather Tanks

Offered in two sizes, with breather filter on top, petcock drain on the bottom, and 1/4"-20 threaded inserts for easy mounting.

| Part No. | Description |
|--------------------|-------------------------------------|
| JAZ605-025-01..... | 1 Quart Breather, -6AN Inlet |
| JAZ605-125-01..... | 1 Quart Breather, -10AN Inlet |
| JAZ605-225-01..... | 1 Quart Breather, -12AN Inlet |
| JAZ605-375-01..... | 1 Pint Mini Breather, 3/8" Fittings |



SFI-Approved Roll Bar Padding

Adhesive backed roll bar padding easily attaches to roll bar tubing and meets SFI 45.1 specifications. Available in 3 ft. lengths and 1/2" or 5/8" thicknesses.



| Description | Black Part No. |
|-----------------------------|----------------|
| 1/2" Thick Roll Bar Padding | JAZ690-003-01 |
| 5/8" Thick Roll Bar Padding | JAZ690-007-01 |

Protecto I And II

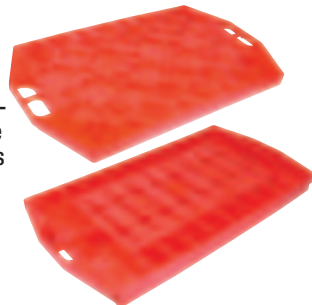
The Protecto I (horizontal) and Protecto II (Vertical) Ford 9" third member storage boxes are a better method of carrying and storing rear end center sections. The Protecto cases will not leak and provides strong, durable protection. Stackable with easy to handle finger grips.



| Part No. | Description |
|--------------------|------------------------|
| JAZ700-009-01..... | Protecto I, Horizontal |
| JAZ700-010-01..... | Protecto II, Vertical |

Valve Train Trays

Lightweight trays are perfect for keeping valvetrain components organized during engine tear down. Valve spring tray holds springs, valve locks and will accept the largest valves available. Rocker arm tray holds pushrods, lifters, poly locks, spark plugs and rocker arms.



| Part No. | Description |
|--------------------|-------------------|
| JAZ735-001-06..... | Valve Spring Tray |
| JAZ735-002-06..... | Rocker Arm Tray |

Engine Stand Drip Tray JAZ720-000-01

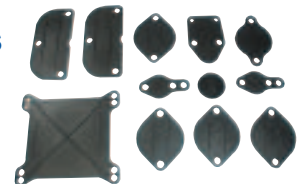
Fits most three- and four-legged engine stands, sturdy drip tray has a deep sump to catch oil and debris. Promotes safety in the workshop and keeps the shop/garage floor much neater. Also handy for retrieving dropped fasteners and small parts.



Engine Block Off Kits

Ideal for sealing up spare engines. Easier and cleaner than using tape. Plastic block-offs are included for exhaust ports, carburetor flange, water pump, fuel pump and water outlet.

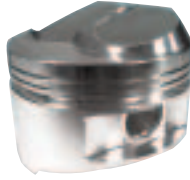
| Part No. | Description |
|--------------------|--|
| JAZ730-001-01..... | SB Chevy Block Off Kit, 4150 Carb |
| JAZ730-004-01..... | SB Chevy/Brodix Block Off Kit, 4150 Carb |
| JAZ730-007-01..... | SB Ford Block Off Kit, 4150 Carb |





SB Chevy 350/400 23° Dome

High compression pistons are compatible with most stock, aftermarket, and angle milled cylinder heads. Valve reliefs accommodate oversized valves and high lift cams. Requires 1/16" top, 1/16" second and 3/16" oil rings. Sold in sets of eight and include .927" x 2.750" (130 grams) wrist pins and double spiral locks.



| Part No. | Bore | Stroke | Rod Length | Comp. Ratio | Dome Volume |
|--------------------|--------|--------|------------|-------------|-------------|
| 350 Pistons | | | | | |
| JEP182005 | 4.030" | 3.750" | 6.000" | 13.3:1 | +9.5cc |
| JEP182012 | 4.030" | 3.500" | 6.000" | 13.1:1 | +13cc |
| JEP182014 | 4.040" | 3.500" | 6.000" | 13.2:1 | +13cc |
| 400 Pistons | | | | | |
| JEP182024 | 4.125" | 4.000" | 6.000" | 13.4:1 | +3cc |
| JEP182027 | 4.155" | 4.000" | 6.000" | 13.5:1 | +3cc |
| JEP182028 | 4.165" | 4.000" | 6.000" | 13.7:1 | +3cc |
| JEP182032 | 4.165" | 4.000" | 6.000" | 14.6:1 | +8cc |
| JEP182036 | 4.155" | 3.875" | 6.000" | 13.2:1 | +3cc |
| JEP182037 | 4.165" | 3.875" | 6.000" | 13.3:1 | +3cc |
| JEP182038 | 4.125" | 3.875" | 6.000" | 14.1:1 | +8cc |
| JEP182041 | 4.155" | 3.875" | 6.000" | 14.1:1 | +8cc |
| JEP182042 | 4.165" | 3.875" | 6.000" | 14.2:1 | +8cc |
| JEP182053 | 4.125" | 3.750" | 6.000" | 12.7:1 | +3cc |
| JEP182058 | 4.125" | 3.750" | 6.000" | 13.6:1 | +8cc |
| JEP182061 | 4.155" | 3.750" | 6.000" | 13.7:1 | +8cc |
| JEP182067 | 4.125" | 3.500" | 6.000" | 13.8:1 | +13cc |
| JEP182069 | 4.155" | 3.500" | 6.000" | 13.8:1 | +13cc |
| JEP207513 | 4.185" | 4.000" | 6.000" | 14.8:1 | +8cc |

Notes: Compression ratios are based on a 64cc combustion chamber. All of the 350 pistons fit both 3.480" and 3.500" strokes.

SB Chevy 350/400 23° Flat Top

Low friction pistons with double-forced pin oilers and annular oil reservoirs will fit most 23° (OEM angle) cylinder heads. Requires 1/16" top, 1/16" second and 3/16" oil rings. The pistons include .927" x 2.500" (118 grams) heavy duty wrist pins. Sold in sets of eight, with double spiral locks.



| Part No. | Bore | Stroke | Rod Length | Comp. Ratio | Dome Volume |
|--------------------|--------|--------|------------|-------------|-------------|
| 350 Pistons | | | | | |
| JEP181916 | 4.030" | 3.500" | 6.000" | 10.3:1 | -5 cc |
| JEP181924 | 4.030" | 3.500" | 5.700" | 10.3:1 | -5 cc |
| 400 Pistons | | | | | |
| JEP194339 | 4.155" | 4.000" | 6.000" | 12.3:1 | -5cc |

Notes: Compression ratios are based on a 64cc combustion chamber. The 350 pistons listed above fit both 3.480" and 3.500" strokes.



Billet Timing Chain Sets

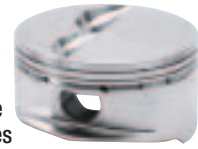
JP Performance Billet Timing Gear sets have induction hardened crank sprockets for increased life and durability. Most sets have reverse oiler grooves to lubricate the front cam journal face in engines without thrust plates. Timing sets are also available -.005" and -.010" for engines that have been align bored (require reduced center distances).

| Description | Standard Part No. | -.005" Part No. | -.010" Part No. |
|--|-------------------|-----------------|-----------------|
| SB Chevy 265-400, Reverse Oiler | JPP5981 | JPP5981-LB5 | JPP5981-LB10 |
| SB Chevy 265-400, Torrington Bearing | JPP5981T | JPP5981T-LB5 | JPP5981T-LB10 |
| SB Chevy 265-400, BB Chevy Crank Snout, Torrington Bearing | JPP5630T | - | - |
| SB Chevy "Rocket Block", Torrington Bearing | JPP5616T | - | - |
| SB Ford 302-351W, Non-EFI, Reverse Oiler | JPP5982 | JPP5982-LB5 | - |
| SB Mopar 273-360 | JPP5985 | JPP5985-LB5 | - |



SB Chevy 350 23° Flat Top Tour Series GP

Engineered for up to 650 horsepower, Tour Series flat top pistons include wrist pins and have .043", .043" and 3mm CNC-machined ring grooves with lateral gas porting for superior ring seal. Sets of eight.



| Part No. | Bore | Stroke | Rod Length | Comp. Ratio | Dome Volume |
|-----------|--------|--------|------------|-------------|-------------|
| JEP170692 | 4.030" | 3.500" | 6.000" | 10.3:1 | -5cc |
| JEP170693 | 4.040" | 3.500" | 6.000" | 10.3:1 | -5cc |

Notes: Compression ratios are based on a 64cc combustion chamber. The 350 pistons listed above fit both 3.480" and 3.500" strokes.

Pro Seal Premium Race Series Piston Rings

A full selection of premium Pro Seal piston rings are listed by bore size. Top compression rings are barrel faced ductile iron with a plasma moly coating. Second rings are taper face cast iron with a phosphate coating. Standard or low tension oil rings are chrome plated carbon steel.



| Part No. | Bore Size | Type | Top Ring | 2nd Ring | Oil Ring |
|-------------------|-----------|-------------|----------|----------|----------|
| JEPJ100F8-4030-5 | 4.030" | Plasma-Moly | 1/16" | 1/16" | 3/16" |
| JEPJ10008-4030-5* | 4.030" | Plasma-Moly | 1/16" | 1/16" | 3/16" |
| JEPJ70008-4030-5* | 4.030" | Plasma-Moly | .043" | .043" | 3mm |
| JEPJ100F8-4040-5 | 4.040" | Plasma-Moly | 1/16" | 1/16" | 3/16" |
| JEPJ70008-4040-5* | 4.040" | Plasma-Moly | .043" | .043" | 3mm |
| JEPJ10008-4040-5* | 4.040" | Plasma-Moly | 1/16" | 1/16" | 3/16" |
| JEPJ100F8-4060-5 | 4.060" | Plasma-Moly | 1/16" | 1/16" | 3/16" |
| JEPJ10008-4060-5* | 4.060" | Plasma-Moly | 1/16" | 1/16" | 3/16" |
| JEPJ70008-4060-5* | 4.060" | Plasma-Moly | .043" | .043" | 3mm |
| JEPJ100F8-4125-5 | 4.125" | Plasma-Moly | 1/16" | 1/16" | 3/16" |
| JEPJ10008-4125-5* | 4.125" | Plasma-Moly | 1/16" | 1/16" | 3/16" |
| JEPJ10008-4145-5* | 4.145" | Plasma-Moly | 1/16" | 1/16" | 3/16" |
| JEPJ100F8-4155-5 | 4.155" | Plasma-Moly | 1/16" | 1/16" | 3/16" |
| JEPJ10008-4155-5* | 4.155" | Plasma-Moly | 1/16" | 1/16" | 3/16" |

* Low tension oil rings



Jeff Slayton

Photo By: John Berglund

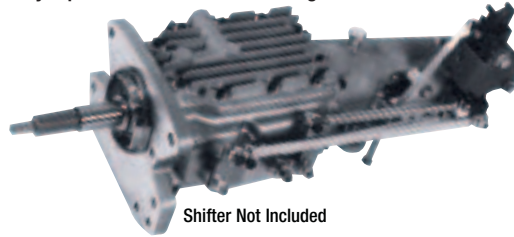


2-Speed Transmission JER2SP

Compact 2-speed transmission is strong, lightweight and versatile. It is one of the fastest transmissions available. More durable and less expensive to run than modified-stock transmissions, the Jerico is engineered to excel on either dirt or asphalt. Jerico's standard 2-speed is 21-1/2" long and weighs only 58 lbs. Jerico Transmissions use 26-spline Chevy input shafts with a 1.40 low gear ratio.

Replacement Components

| Part No. | Description |
|--------------------|--|
| JER34743-DS..... | Tailshaft Seal |
| JER499-8777-2SP .. | H-Pattern Shifter With Levers, No Handle Or Knob |
| JERBCH90..... | Billet Bearing Retainer |
| JERLRB-A..... | Tailshaft Bushing |
| JERN11123..... | Input Seal |
| JERN6130..... | Shift Finger Seal |
| JERSA-2SP..... | Shift Levers |



Shifter Not Included



Quick-Connect Fluid Fittings

Disconnect fittings in seconds. Stealth black, aluminum fittings resist leakage, withstand up to 200 PSI, and can handle fuel, oil or water. Jiffy-Tite 2000, 3000, and 5000 series fittings each offer progressively increased flow and will mate with any socket within the same series. One plug and one socket are required to make a quick release connection. Fittings listed are valved, unless noted, and are only interchangeable with other valved fittings.

JFT21606J



| Description | Size | 200 Series Socket Part No. | Plug Part No. | 300 Series Socket Part No. | Plug Part No. | 500 Series Socket Part No. | Plug Part No. |
|--|----------|----------------------------|---------------|----------------------------|---------------|----------------------------|---------------|
| Straight Reusable Nut Hose End | -6AN | JFT21606J | JFT22606J | JFT31606J | JFT32606J | - | - |
| Straight Reusable Nut Hose End | -8AN | - | - | JFT31608J | JFT32608J | JFT51608J | JFT52608J |
| Straight Reusable Nut Hose End | -10AN | - | - | - | - | JFT51610J | - |
| Straight Reusable Nut Hose End | -12AN | - | - | - | - | JFT51612J | - |
| 45° Reusable Nut Hose End | -6AN | JFT21606DJ | - | JFT31606DJ | - | - | - |
| 45° Reusable Nut Hose End | -8AN | - | - | JFT31608DJ | - | - | - |
| 45° Reusable Nut Hose End | -10AN | - | - | - | - | JFT51610DJ | JFT52610DJ |
| 90° Reusable Nut Hose End | -6AN | JFT21606EJ | - | JFT31606EJ | - | - | - |
| 90° Reusable Nut Hose End | -8AN | - | - | JFT31608EJ | - | - | - |
| 90° Reusable Nut Hose End | -10AN | - | - | - | - | JFT51610EJ | - |
| Straight Hose Barb | -6AN | JFT21506J | JFT22506 | - | - | - | - |
| Straight Female 37° Hose End | -6AN | - | - | JFT31306J | JFT32306 | - | - |
| Straight Female 37° Hose End | -8AN | - | - | JFT31308J | JFT32308 | - | - |
| Straight Female 37° Hose End | -10AN | - | - | - | - | JFT51310J | JFT52310 |
| Straight Male 37° Hose End | -6AN | - | - | JFT31406J | JFT32406 | - | - |
| Straight Male 37° Hose End | -8AN | - | - | JFT31408J | JFT32408 | - | - |
| Straight Male 37° Hose End | -10AN | - | - | - | - | JFT51410J | JFT52410 |
| Male O-Ring Boss Seal, ORB | -6AN | - | JFT22106 | - | JFT32106 | - | - |
| Male O-Ring Boss Seal, ORB, Non-Valved | -6AN | - | JFT22106A | - | JFT32106A | - | - |
| Male O-Ring Boss Seal, ORB | -8AN | - | - | - | JFT32108 | - | JFT52108 |
| Male O-Ring Boss Seal, ORB, Non-Valved | -8AN | - | - | - | JFT32108A | - | JFT52108A |
| Male O-Ring Boss Seal, ORB | -10AN | - | - | - | - | - | JFT52110 |
| Male O-Ring Boss Seal, ORB, Non-Valved | -10AN | - | - | - | - | - | JFT52110A |
| Male O-Ring Boss Seal, ORB | -12AN | - | - | - | - | - | JFT52112 |
| Male O-Ring Boss Seal, ORB, Non-Valved | -12AN | - | - | - | - | - | JFT52112A |
| Male NPT | 1/8" NPT | - | JFT22802 | - | - | - | - |
| Male NPT | 1/4" NPT | - | - | - | JFT32804 | - | - |
| Male NPT | 3/8" NPT | - | - | - | JFT32806 | - | JFT52806 |
| Male NPT | 1/2" NPT | - | - | - | - | - | JFT52808 |
| Male NPT | 3/4" NPT | - | - | - | - | - | JFT52812 |

Carburetor Kits

Quick-connect kits include two sockets, two plugs, and two aluminum washers. Offered with fluorocarbon, or Buna N (nitrile) seals which are recommended for alcohol or methanol applications.



| Description | Fluorocarbon Part No. | Buna N Part No. |
|---------------------------------------|-----------------------|-----------------|
| 7/8"-20 UNEF x -6AN, Dual Feed Holley | JFT200C1J | JFT200C1BJ |
| 7/8"-20 UNEF x -8AN, Dual Feed Holley | JFT300C1J | JFT300C1BJ |
| 9/16"-24 UNEF x -6AN, Holley/Demon | JFT200C4J | JFT200C4BJ |
| 9/16"-24 UNEF x -8AN, Holley/Demon | JFT300C4J | JFT300C4BJ |

Transmission Kits

Self-sealing fittings allow quicker transmission changes and may be disconnected quickly without tools.

| Part No. | Description |
|----------------|--|
| JFT200T1J..... | Kit Includes (2) 12" Long -6AN Braided Hoses, (2) 1/4" To 1/8" NPT Reducers, (1) Plug And (1) Socket |
| JFT200T2J..... | Kit Includes (2) 12" Long -6AN Braided Hoses And (2) 1/4" To 1/8" NPT Reducers |
| JFT200T3J..... | Kit Includes (2) 45° x 1/8" NPT Elbows, (2) Plugs And (2) Sockets |
| JFT200T4J..... | Kit Includes (2) 45° x 1/4" NPT Elbows, (2) Plugs And (2) Sockets |

Note: Most Chrysler, Ford and GM Powerglide require 1/8" NPT fittings. Reid Racing and JW Ultra use 1/4" NPT; TH-350 and TH-400 use 1/4" NPT.

XPO Synthetic Racing Oil

Ultra-low viscosity racing oil is formulated for qualifying, where maximum performance is required. Oil has a viscosity typical of SAE 0W. Non API certified.

| 1 Qt. Bottle Part No. | (12) 1 Qt. Bottles Part No. | 2.5 Gallon Jug Part No. | (2) 2.5 Gallon Jugs Part No. |
|--------------------------|--------------------------------|----------------------------|---------------------------------|
| JGP00406 | JGP00407 | JGP00414 | JGP00415 |



XP6 Synthetic Racing Oil

A full synthetic, 15W-50 version of race proven XP1. Oil provides outstanding cold start protection and superior bearing oil film thickness. Designed for aluminum blocks or applications with looser clearances, oil has a viscosity typical of SAE 15 W-50. Non API certified.

| 1 Qt. Bottle Part No. | (12) 1 Qt. Bottles Part No. |
|--------------------------|--------------------------------|
| JGP01006 | JGP01007 |



XP1 Synthetic Racing Oil

XP1 Synthetic Racing Oil has a viscosity typical of SAE 5W-20. Ideal for engines where bearing clearances are less than .0025". Non API certified.

| 1 Qt. Bottle Part No. | (12) 1 Qt. Bottles Part No. | 2.5 Gallon Jug Part No. | (2) 2.5 Gallon Jugs Part No. |
|--------------------------|--------------------------------|----------------------------|---------------------------------|
| JGP00006 | JGP00007 | JGP00014 | JGP00015 |



XP7 Semi-Synthetic Racing Oil JGP01706

Combines the performance of XP3 with the economical price of XP5. Viscosity is typical of SAE 15W-40. Non API certified.

| 1 Qt. Bottle Part No. | (12) 1 Qt. Bottles Part No. |
|--------------------------|--------------------------------|
| JGP01706 | JGP01707 |



XP2 Synthetic Racing Oil

Joe Gibbs Racing XP2 Racing Oil is engineered for high RPM racing engines with bearing clearances under .002", oil has a viscosity typical of SAE 0W-20. Non API certified.

| 1 Qt. Bottle Part No. | (12) 1 Qt. Bottles Part No. | 2.5 Gallon Jug Part No. | (2) 2.5 Gallon Jugs Part No. |
|--------------------------|--------------------------------|----------------------------|---------------------------------|
| JGP00206 | JGP00207 | JGP00214 | JGP00215 |



XP8 Petroleum Racing Oil

High zinc, petroleum formula racing oil offers low cost protection in a non-synthetic oil. Recommended for small block, flat tappet engines with clearances less than .0027". Non API certified.

| 1 Qt. Bottle Part No. | (12) 1 Qt. Bottles Part No. |
|--------------------------|--------------------------------|
| JGP01906 | JGP01907 |



XP3 Synthetic Racing Oil

Similar to XP1 with a higher viscosity, typical of SAE 10W-30, for improved high temperature/high shear protection. Formulated for aluminum blocks and all engines with bearing clearances greater than .0025". Non API certified.

| 1 Qt. Bottle Part No. | (12) 1 Qt. Bottles Part No. | 2.5 Gallon Jug Part No. | (2) 2.5 Gallon Jugs Part No. |
|--------------------------|--------------------------------|----------------------------|---------------------------------|
| JGP00306 | JGP00307 | JGP00314 | JGP00315 |



BR Break-In Oil

Petroleum-based oil has superior break-in properties, particularly in flat tappet engines. Lubricant promotes ring seal and protects camshaft and lifters with the highest levels of zinc and phosphorus. Offered in BR50 (SAE 15W-50) and BR30 (SAE 10W-30) formulas. Non API certified.

| Description | 1 Qt. Bottle Part No. | (12) 1 Qt. Bottles Part No. | 2.5 Gallon Jug Part No. | (2) 2.5 Gallon Jugs Part No. |
|-------------|--------------------------|--------------------------------|----------------------------|---------------------------------|
| BR30 | JGP01806 | JGP01807 | - | - |
| BR50 | JGP00106 | JGP00107 | JGP00114 | JGP00115 |



XP4 Performance Racing Oil

Petroleum-based lubricant is a low cost alternative to synthetic race oils. Viscosity is typical of SAE 15W-50 and is ideal for racers who change oil after every race. Works well in engines with clearances in excess of .0025". Non API certified.

| 1 Qt. Bottle Part No. | (12) 1 Qt. Bottles Part No. |
|--------------------------|--------------------------------|
| JGP00506 | JGP00507 |



Manual Transmission Fluid JGP01206

Full synthetic fluid meets the demands of modern manual racing transmissions.

| 1 Quart Bottle Part No. | (12) 1 Qt. Bottles Part No. |
|----------------------------|--------------------------------|
| JGP01206 | JGP01207 |



XP5 Semi-Synthetic Racing Oil

A semi-synthetic lubricant offers the added benefits of high temperature shear protection and oxidation stability without the high cost of a synthetic. Viscosity is typical of SAE 20W-50. Non API certified.

| 1 Qt. Bottle Part No. | (12) 1 Qt. Bottles Part No. | 2.5 Gallon Jug Part No. | (2) 2.5 Gallon Jugs Part No. |
|--------------------------|--------------------------------|----------------------------|---------------------------------|
| JGP00906 | JGP00907 | JGP00914 | JGP00915 |



Power Steering Fluid JGP01306

A full synthetic formula with exceptional high temperature foam resistance. Sold in a 1 qt. bottle.



Synthetic Gear Oil

Formulated for differentials and manual transmissions, Synthetic Performance Gear Oil reduces operating temps by up to 15°F. Offered in 75W and Super Speedway 80W.

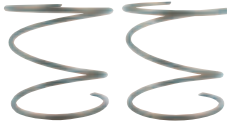


| Description | 1 Quart Bottle Part No. | (12) 1 Qt. Bottles Part No. | 5 Gallon Pail Part No. |
|-------------------------|-------------------------|-----------------------------|------------------------|
| Synthetic Gear Oil | JGP00630 | JGP00631 | JGP00617 |
| Super Speedway Gear Oil | JGP00830 | JGP00831 | - |
| Qualifying Gear Oil | JGP01130 | JGP01131 | - |

High Performance Differential Locker Spring Set

JGP60001

Designed for Ford 9" rears, locker springs last up to four times longer than conventional springs. Offered in 78 lb. rate only. Sold in pairs.



Extreme Pressure Grease

JGP70030

A premium extreme pressure grease with excellent load carrying ability. Designed for high temperature and high loads. Provides exceptional mechanical stability in a NLGI #2 grease. Sold in 400gm cartridge.



Cooling System Protector

JGP50030

Impurities in well water can cause rust and corrosion inside the radiator, block, water pump and cylinder heads which can lead to a loss of cooling system efficiency. Cooling System Protector stops the adverse effects of hard water on these critical components. Sold in a 12 oz. bottle.



Automotive Degreaser/ Brake And Parts Cleaner

Sold in 18 oz. aerosol cans.

| Part No. | Description |
|----------|------------------------------|
| JGP50010 |Automotive Degreaser |
| JGP50020 |Brake And Parts Cleaner |



Glow-In-The-Dark Tire Pressure Gauges

Accurately adjust tire pressure, even in dark pit areas. Gauges include air pressure release buttons, 17" ultra flexible hoses with a chrome swivel angle chuck and a separate ball chuck included. Choose from Standard 2-1/2" dia. or Precision liquid-filled 4" dia. gauges. Standard 2-1/2" gauges are also available with optional hold valve, which freezes readings until pressure is reapplied or released.



| Description | Standard | Standard | Precision |
|-------------|-------------|--------------------------------|--------------------------|
| | 2-1/2" Dia. | With Hold Valve 2-1/2" Dia. | 4" Dia. Liquid-Filled |
| Part No. | Part No. | Part No. | Part No. |
| 0-15 PSI | JOE32305 | JOE32308 | - |
| 0-30 PSI | JOE32306 | JOE32309 | JOE32330 |
| 0-60 PSI | JOE32307 | - | JOE32331 |

10" Wheel Stands JOE29600

Aluminum, 10" wheel stands allow suspension adjustments while the car rests on the wheels. Sold in sets of four.



Tire Caliper JOE32000

Measure tires quickly and precisely. Billet aluminum, 6061-T6 caliper incorporates rollers for smooth, consistent readings. Anodized and laser engraved.



Coil-Over Spanner Wrenches

Billet aluminum wrenches prevent knuckle injuries when adjusting coil-overs.

| Part No. | Description |
|----------|-------------|
| JOE33000 |Long |
| JOE33500 |Short |



AFCO Shock Wrench JOE19079 NEW!

Designed for use with AFCO large body shock absorbers, billet aluminum shock wrench includes durable steel pins and rounded edges for comfort.



Ball Joint Sockets

Eases ball joint installation. Machined steel, zinc plated sockets accept a 1/2" drive ratchet or breaker bar.

| Part No. | Description |
|----------|------------------------------|
| JOE40050 |Upper Ball Joint Socket |
| JOE40075 |Lower Ball Joint Socket |

JOE40050



Spindle Nut Socket JOE40000

Billet aluminum socket is gray anodized and fits 5x5 or wide 5 nuts. Fits a 1/2" drive ratchet.



Double End AN Wrench Set JOE18000

AN wrenches are precision machined from billet, 6061-T6 aluminum and are designed to allow tightening or loosening a fitting in as little as 15° increments. Bright anodized, five-piece set includes -6, -8, -10, -12 and -16 wrenches.





Deluxe Racing Pyrometer JOE54005

Pyrometer combines large, 1-1/2" tall numbers and backlighting for easy reading, even at night. The compact, 90° probe offers easy access. A padded case is included.



Digital Tire Durometer JOE56015 **NEW!**

Premium durometer automatically records the highest number, while an average mode displays average durometer if several spots are tested. Display features easy-to-read, digital resolution. Sold complete in foam-lined case.



Tire Purge Tool **JOE32125 NEW!**

The days of waiting for air to drain are over. Tire Purge Tool clips on the valve stem and a slide collar opens up for fast air dumping to purge the tires with the assurance that the tire will automatically drain to the desired pressure, attended or unattended, allowing the tire specialist to work more than one tire at a time. An adjustable bleed valve allows draining tires to the desired pressure.



Bump Stop Shim Kit JOE19485

Designed for shocks with 16mm shafts, kit uses a special tool and shims for quick installation of bump stop shims. A quick push and the shim snaps into place. Kit includes case, bump stop wrench and four each: 1/16", 1/8", 1/4" and 3/8" shims.



Quick Release Canister Mount

Canister mount has a quick release nylon strap to secure any remote canister from 1-1/2" to 3" dia.

| Part No. | Description |
|----------|-------------------------|
| JOE19410 | Clamps To 1-1/4" Tubing |
| JOE19412 | Clamps To 1-1/2" Tubing |
| JOE19414 | Clamps To 1-3/4" Tubing |
| JOE19445 | Replacement Strap |
| JOE19450 | Replacement Pin |



Shock Workstation

Fixture secures body and shaft of a shock absorber to allow easier servicing. May be used in a vise or mounted permanently to a work bench or pit cart with the optional base.



| Part No. | Description |
|----------|---|
| JOE19200 | Shock Workstation |
| JOE19250 | Shock Workstation Base Only |
| JOE19075 | ShockWrench, Allows Penske Shock Disassembly/Assembly |
| JOE19300 | Drip Cup, Catches Shock Oil When Rebuilding |

Caster Camber Gauge **JOE28200**

Precisely align front end. Caster Camber gauge is CNC-machined from billet aluminum and engineered to be extremely accurate. Includes magnetic adapter.



Air Cleaner Stud Kit **JOE34306**

Stainless steel 5/16"-18 stud will not break like mild steel units. Tapered nut improves air flow to the carb, while the air cleaner nut includes an O-ring for sealing out dirt and contaminants.



Throttle Pedal Assembly

Pedal assembly offers comfort and adjustability with a linkage block that acts as a side foot rest which may be adjusted to suit the linkage. Includes return spring and two adjustable stops, one for full throttle and one for return. Throttle pull back may be purchased separately.

| Part No. | Description |
|----------|--------------------------|
| JOE33720 | Throttle Pedal Assembly |
| JOE33620 | Throttle Pedal Pull Back |



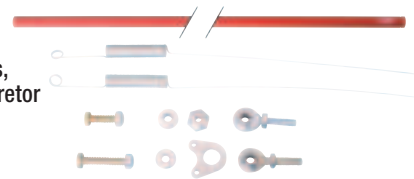
FuelCup **JOE34500**

Ideal for jet changes or carburetor service, FuelCup catches fuel during float bowl removal so it can drain back into float bowl through vent tube.



Carburetor Linkage Assembly **JOE34200**

23" long, assembly includes a heat-treated aluminum tube, rod ends, bolts, springs and carburetor bushings.



ThermoSpacer **JOE36025**

Aluminum spacer allows plumbing additional lines for improved cooling. Uses an O-ring for sealing, and has three 1/2" NPT ports and one temperature sending unit port. Fits Chevy V-8's.



Water Outlet Fittings

Billet aluminum construction fittings include O-rings for sealing. Fits Chevy V-8's.

| Part No. | Description |
|----------|------------------|
| JOE36050 | -16 Water Outlet |
| JOE36060 | -20 Water Outlet |





Weld Fittings/Bungs

Ideal for welding to valve covers, dry sump tanks, breather tanks, etc. Sold individually.



| Part No. | Description | Description | Male AN Part No. | Female AN Part No. |
|---------------------------------------|-------------|----------------------------------|------------------|--------------------|
| Aluminum Female NPT Weld Bungs | | Aluminum AN Weld Fittings | | |
| JOE37102 | 1/8" NPT | -3AN | JOE37003 | - |
| JOE37104 | 1/4" NPT | -4AN | JOE37004 | - |
| JOE37106 | 3/8" NPT | -6AN | JOE37006 | JOE37306 |
| JOE37108 | 1/2" NPT | -8AN | JOE37008 | JOE37308 |
| JOE37110 | 3/4" NPT | -10AN | JOE37010 | JOE37310 |
| JOE37112 | 1" NPT | -12AN | JOE37012 | JOE37312 |
| JOE37114 | 1-1/4" NPT | -16AN | JOE37016 | JOE37316 |
| | | -20AN | JOE37020 | - |

Clamp-On Radiator Brackets

Brackets locate radiator side-to-side and the top clamp unbolts for quick radiator removal. Includes provision for air box attachment. No welding necessary.

Part No. Description
 JOE365011-1/4" Clamp-On Brackets
 JOE365021-1/2" Clamp-On Brackets
 JOE365041-3/4" Clamp-On Brackets



Reducer Clamps

Ideal when relocating a radio box, coil clamp, etc. to smaller diameter tubing. Made from lightweight aluminum.

Part No. Description
 JOE130001-3/4" To 1-1/4"
 JOE130011-3/4" To 1-3/8"
 JOE130031-3/4" To 1-5/8"



Engine Mount Spacers

Lightweight billet aluminum spacers eliminate the need for using stacks of heavy steel washers. Sold per pair.

Part No. Description
 JOE109661/2" Thick Spacers
 JOE109681" Thick Spacers
 JOE109782" Thick Spacers



A-Arms

Precision machined A-Arms have aluminum cross shafts and are available with choice of 10° screw-in ball joint sleeve or 0° bolt-in ball joint provision. Part numbers ending with "SLB" signify A-arms with slotted bearing style cross shafts, while "SLBA" stands for an A-arm with bearing style arm section only, less cross shaft.

| Size | Screw-In Ball Joint 10° Assembly | Screw-In SLB Ball Joint 10° Assembly | Bolt-In Ball Joint 0° Assembly | Bolt-In SLB Ball Joint 0° Assembly | Bolt-In SLBA Ball Joint 0° (Less Cross Shaft) |
|--------|----------------------------------|--------------------------------------|--------------------------------|------------------------------------|---|
| 7.0" | JOE15480 | - | - | - | - |
| 7.25" | JOE15485 | - | - | - | - |
| 7.5" | JOE15490 | - | JOE15820 | - | - |
| 7.75" | JOE15495 | - | JOE15825 | - | - |
| 8.0" | JOE15500 | - | JOE15830 | - | - |
| 8.25" | JOE15505 | - | JOE15835 | - | - |
| 8.5" | JOE15510 | - | JOE15840 | - | - |
| 8.75" | JOE15515 | - | JOE15845 | - | - |
| 9.0" | JOE15520 | - | JOE15850 | - | - |
| 9.25" | JOE15525 | - | JOE15855 | - | - |
| 9.5" | JOE15530 | - | JOE15860 | - | - |
| 9.75" | JOE15535 | - | JOE15865 | - | - |
| 10.0" | JOE15540 | - | JOE15870 | JOE15870-SLB | JOE15870-SLBA |
| 10.25" | JOE15545 | - | JOE15875 | - | - |
| 10.5" | JOE15550 | - | JOE15880 | JOE15880-SLB | JOE15880-SLBA |
| 11.0" | JOE15560 | - | JOE15890 | JOE15890-SLB | JOE15890-SLBA |
| 11.25" | JOE15565 | - | JOE15895 | JOE15895-SLB | JOE15895-SLBA |
| 12.0" | - | JOE15580-SLB | - | JOE15910-SLB | - |

Sway Bar Mount JOE11905

Zinc-plated mount is manufactured from 7/8"-9 threaded x 10" long stock and includes a 2-1/8" eyelet welded on the end. Includes (2) jam nuts.



Sway Bar Bushings

Premium bearing quality bushings prevent binding.

Part No. Description
 JOE119151-1/4" I.D. x 2-1/8" O.D.
 JOE119201-1/2" I.D. x 2-1/8" O.D.
 JOE119251-3/4" I.D. x 2-1/8" O.D.



Swivel Eye And Threaded Stem

Special swivel eye bolts, allowing quick sway bar changes, while also preventing binding.

Part No. Description
 JOE11970Swivel Eye, 1-1/2" I.D.
 JOE11975Swivel Eye, 2-1/8" I.D.



Sway Bar Adjuster

Bolt the sway bar slider mount style adjuster on both sides for perfect alignment of big or standard sway bars. Swivel eye allows dropping the bar out the bottom for quick set-up changes.

Part No. Description
 JOE11950Sway Bar Slider Mount Adjuster, 1-1/2" Dia.
 JOE11955Sway Bar Slider Mount Adjuster, 2-1/8" Dia.



Chad Spencer



JOE15480



Tapered A-Arm Spacer Kit

JOE14250

Use 6" slotted aluminum center spacers to easily change caster and camber without removing the A-arm. Four-piece kit includes spacers with 1/32", 1/16", 1/8" and 1/4" thicknesses.



Nut Plate JOE14900

Nut Plate has 6" spacing and secures A-arms so that changing shims, slugs or A-arms needs only a single wrench.



Wide 5 Billet Hub

JOE25330

A direct replacement for cast hubs, bare aluminum hub is extremely strong. Run oil filled, low friction bearings or use standard wheel bearings.

- | Part No. | Description |
|----------|---|
| JOE25322 |Wide 5 Front Dust Cover 5 Bolt |
| JOE25342 |Wide 5 Drive Flange |
| JOE25343 |Billet Wide 5 Drive Flange Cover |
| JOE25003 |Wide 5 Bearing Spacer |
| JOE25320 |Wide 5 Dust Cover Bolt, Aluminum, 5-Pack |



Wide 5 Wheel Spacers

Commonly used to increase track width or to provide increased tire clearance for trailing arms or tie rods. Machined from billet, 6061-T6 aluminum.

- | Part No. | Description |
|----------|--------------------------------------|
| JOE38125 |Wide 5 Wheel Spacer, 1/8" Thick |
| JOE38250 |Wide 5 Wheel Spacer, 1/4" Thick |



Billet Hub Rotor Flange

JOE25360

Machined from 6061-T6 aluminum, hub rotor flange allows bolting the rotor directly on, or it may be used with T-nuts to float the rotor.

- | Part No. | Description |
|----------|--------------------------------------|
| JOE25155 |T-Nuts For Rotor Flange, 8-Pack |



5 x 5 Hub Kits

Offered in standard or floater style, rigid, 5 x 5 billet aluminum hubs are sold individually, complete with studs, bearings, races, seal and spindle nut. Dust cap or drive flange must be purchased separately.



JOE25175

| Description | Hub Kit Part No. | Hub Only Part No. | Dust Cap Only Part No. |
|---------------------|------------------|-------------------|------------------------|
| 5 x 5 Hub, Standard | JOE25175 | - | JOE25025 |
| 5 x 5 Hub, Floater | JOE25315 | JOE25310 | JOE25025 |



Brian Ross

Spindle Nut Assembly

JOE25120

Spindle nut has multiple lock down points and the slotted retainer allows aligning the spindle tab with any torque setting.



Dust Caps

Sealed with O-rings, billet aluminum dust caps require drilling and tapping two 8-32 holes in hub.

| Description | Dust Cap Part No. | Drill And Tap Guide Part No. |
|-------------|-------------------|------------------------------|
| Chevy | JOE28600 | JOE28601 |
| Ford | JOE28610 | JOE28611 |



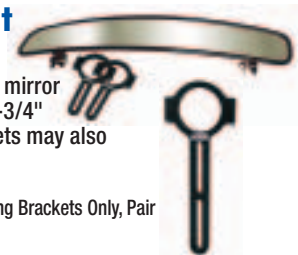
JOE28600

Wide Angle Mirror Kit

JOE11284

Kit includes 17" wide viewing angle mirror and brackets that mount directly to 1-3/4" dia. roll cage tubing. Mounting brackets may also be purchased separately.

- | Part No. | Description |
|----------|---|
| JOE11264 |5" Long x 1-3/4" Dia. Mounting Brackets Only, Pair |



Side View Mirrors

Keep an eye on the competition with 3" diameter side view mirror. Mounts directly to roll cage tubing.

- | Part No. | Description |
|----------|---|
| JOE11214 |Side View Mirror, 1-3/4" Clamp-On |
| JOE11222 |Extended Side View Mirror, 1-1/2" Clamp-On |
| JOE11224 |Extended Side View Mirror, 1-3/4" Clamp-On |



JOE11222

Fire Extinguisher Bracket

JOE12824

Rigid mounting bracket features an oversized, red anodized billet knob that provides easy fire extinguisher access and release. Clamps directly to 1-3/4" diameter roll cage tubing.



ShiftBoot JOE16500-BK

Fire retardant ShiftBoot may be quickly unsnapped for linkage access. Includes aluminum base.



Lightweight Shift Knob JOE16022

Polished aluminum Shift Knob has 3/8"-16 threads.



Billet Brake Balance Adjuster

JOE17035

Compact, billet aluminum adjuster has roller bearings and four ball detents for precise adjustability and resistance to vibrations. Short swing handle and spread plate ease mounting.

