




## PFC Racing Compounds

Performance Friction pads are used by most of the Sprint Cup, Busch Grand National, and Indy racers as well as many top short track racers. Select the PFC compound listed below that best suits requirements. All sets are completely race ready pads requiring no bedding. All pads are boxed per axle set, four pads per box. All PFC compounds are painted black.


Compound	Description
01	One of the most advanced and popular compounds available from PFC. Slightly higher bite and torque for the first 2/3's of the stop. The 01 has less torque scatter for improved modulation with excellent release and a flat torque curve with great control. Very easy on the rotors with very low wear. Requires finesse to prevent from overslowing the car or overwhelming the car's set-up. Works great in all heat ranges.
05	New compound offers the highest initial bite and highest average torque and no torque rise with temperature. The release and wear characteristics are excellent with a slight improvement over the 03 compound. Designed for high grip, high downforce and severe duty including NASCAR short track.
07	Recommended for high grip, high down force and severe duty applications, compound has the highest initial bite and higher than average torque than any other PFC pad. Release and modulation characteristics are unsurpassed and very low disc wear can be expected with a fine micronic polished disc finish. Compound will have friction rise with temperature for the most severe applications and demands the most from the vehicle setup.
81	A race ready compound that replaces the 80 compound and provides smooth, stable high temperature torque and superior cold bite for dirt or asphalt. Quick release, low wear and excellent disc conditioning qualities make the pads ideal for low grip asphalt and dirt track including IMCA modifieds, dirt late models and street stocks.
97	High cold bite with great modulation. Pads have a very flat torque curve with enhanced release characteristics. The 97 is very easy on the discs with very low wear. Works well in all heat ranges. A great rear pad when mixed with 01 in the front, also works well on the front and rear on milder braking asphalt or dirt tracks.

Part No.	Description
<b>Full Size GM</b>	
PFR0052-01-14-44	01 Compound, Race Ready Set
PFR0052-05-14-44	05 Compound, Race Ready Set
PFR0052-81-14-44	81 Compound, Race Ready Set
PFR0052-97-14-44	97 Compound, Race Ready Set




PFR0052-81-14-44

Part No.	Description
<b>Intermediate GM Metric</b>	
PFR0154-01-14-44	01 Compound, Race Ready Set
PFR0154-81-14-44	81 Compound, Race Ready Set
PFR0154-97-14-44	97 Compound, Race Ready Set
PFR0154-10	Z-Rated Compound, Std. Set




PFR0154-81-14-44

Part No.	Description
<b>Performance Friction ZR34</b>	
PFR7934-01-19-44	01 Compound, Race Ready Set
PFR7934-05-19-44	05 Compound, Race Ready Set



PFR7934-01-19-44

Part No.	Description
<b>Wilwood Superlite, Outlaw 3000/4000, Sierra XL</b>	
PFR7751-01-20-44	01 Compound, Race Ready Set
PFR7751-07-20-44	07 Compound, Race Ready Set
PFR7751-81-20-44	81 Compound, Race Ready Set
PFR7751-97-20-44	97 Compound, Race Ready Set




PFR7751-81-20-44

Part No.	Description
<b>Wilwood Dynalite, Outlaw 2000, Sierra Mini GN</b>	
PFR7752-01-12-44	01 Compound, Race Ready Set
PFR7752-81-12-44	81 Compound, Race Ready Set
PFR7752-97-12-44	97 Compound, Race Ready Set




PFR7752-81-12-44

Part No.	Description
<b>Wilwood GN, Outlaw GN, Sierra GN, AP SC360</b>	
PFR7753-01-21-44	01 Compound, Race Ready Set




PFR7753-01-21-44

Part No.	Description
<b>Wilwood Dynalite Bridgebolt, Outlaw 2800</b>	
PFR7754-01-16-44	01 Compound, Race Ready Set
PFR7754-81-16-44	81 Compound, Race Ready Set
PFR7754-97-16-44	97 Compound, Race Ready Set



PFR7754-81-16-44

Part No.	Description
<b>Wilwood Dynalite Single, Outlaw 1000, Sierra Mini GN</b>	
PFR7757-01-12-44	01 Compound, Race Ready Set
PFR7757-81-12-44	81 Compound, Race Ready Set
PFR7757-97-12-44	97 Compound, Race Ready Set



PFR7757-81-12-44

## PFC PAD PART NUMBERING SYSTEM

WWW-XX-YY-ZZ

PFC Pad Shape    Compound    Overall Thickness (mm)    '04 = Standard Set, 4 Pads  
44 = Race Ready, 4 Pads

## ZR34 Series Calipers

The most technologically advanced caliper currently offered to the Late Model market. Manufactured using a Monobloc (one-piece) design, billet aluminum calipers offer increased pedal stiffness, improved response and less drag. ASA-legal four piston calipers use radial mounting for improved torque takeout. Wide 5 and 5 x 5 compatible, calipers are designed for use with 1.25" thick, 11.75"-12.7" diameter discs. Requires #PFC180-028-158-01 caliper bracket.



Part No.	Application	Piston Size	Rotor Thickness	Seal Kit Part No.
PFR34-323-290-365-01	Left Rear/Leading	2.55/29.0/29.0/36.5	1.25"	PFR900-900-100-03
PFR34-323-290-365-02	Right Rear/Leading	2.55/29.0/29.0/36.5	1.25"	PFR900-900-100-03
PFR34-323-410-440-11	Left Front/Trailing	41.0/44.0	1.25"	PFR900-900-100-05
PFR34-323-410-440-12	Right Front/Trailing	41.0/44.0	1.25"	PFR900-900-100-05

## Late Model/Modified/CASCAR Brake Rotors

PFC's late model/modified brake rotors are made from superior alloys to resist cracking and are offered in smooth or slotted designs. Directional vanes control air flow and increase brake performance and durability. Advanced pattern on slotted rotor enhances pad bite and reduces thermal distortion. All rotors listed are 8-bolt with a 7" bolt circle.



Part No.	Description	PFC Pad Shape
PFR299-20-0045-01*	LH, 11.75" Dia. x .810" Thick	0052/7752/7754
PFR299-20-0045-02*	RH, 11.75" Dia. x .810" Thick	0052/7752/7754
PFR299-32-0040-01	LH, 11.75" Dia. x 1.250" Thick	7736/7751
PFR299-32-0040-02	RH, 11.75" Dia. x 1.250" Thick	7736/7751
PFR299-32-0045-01	LH, Late Model CASCAR, Includes Bolt Kit	0052/7752/7754
PFR299-32-0045-02	RH, Late Model CASCAR, Includes Bolt Kit	0052/7752/7754

\* Includes rotor bolt kit

## DDS Brake Rotors **NEW!**

Designed for dirt late models, DDS brake rotors weigh just 8 lbs., yet are exceptionally durable. Rotors are manufactured from superior alloys to resist cracking and use directional vanes to control air flow, increase brake performance and aid durability. All rotors listed are 8-bolt with a 7" bolt circle.

**Part No. Description**  
PFR295-25-0038-01.....LH, 11.625" Dia. x 1.10" Thick Rotor  
PFR295-25-0038-02.....RH, 11.625" Dia. x 1.10" Thick Rotor



## RH665 DOT 4 Racing Brake Fluid **NEW!**

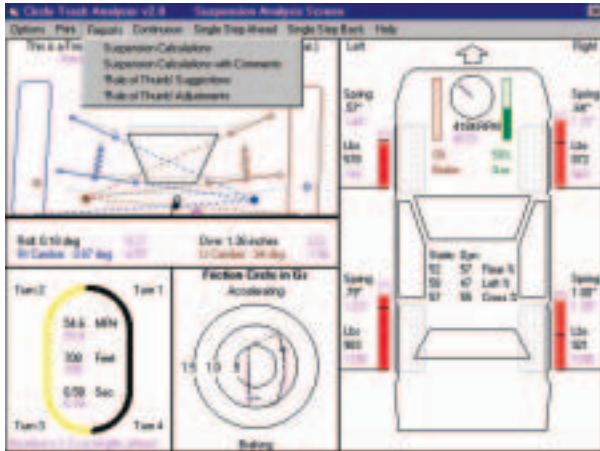
A specially formulated synthetic brake fluid engineered specifically for racing applications and the associated high temperatures. Complex mixture provides exceptional viscosity, lubricity, compressibility and a "rock hard" pedal at extreme temperatures with a very high boiling point, while also meeting stringent FMVSS 116 DOT 4 specifications. RH665 has the highest guaranteed minimum (ERBP) dry boiling point of any DOT 4 brake fluid, 617° F. Sold in 500ml bottles, or in cases.



**Part No. Description**  
PFR025-0037..... RH665 Brake Fluid, 500ml Bottle  
PFR025-0038..... RH665 Brake Fluid, Case of (12) 500ml Bottles

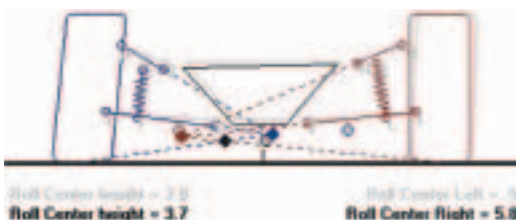
# Performance Trends Racing Computer Software

## Circle Track Analyzer **PFTCTA36C**



Version 3.6 computer program simulates, predicts and analyzes late model, modified, factory stock, mini stock, etc. oval track applications. Study shocks, springs and other factors that can affect race car handling and performance. Add rear suspension specs, corner weights, aerodynamics, gear ratios, etc., and drive the "virtual" race car to study and estimate lap times, roll center, camber change, spring motion, etc. as the car goes around the track. Built-in roll center calculator allows creating graphs and tables for various combinations. Requires an IBM or compatible computer with Windows 95/98/Me/XP/2000/NT and Vista.

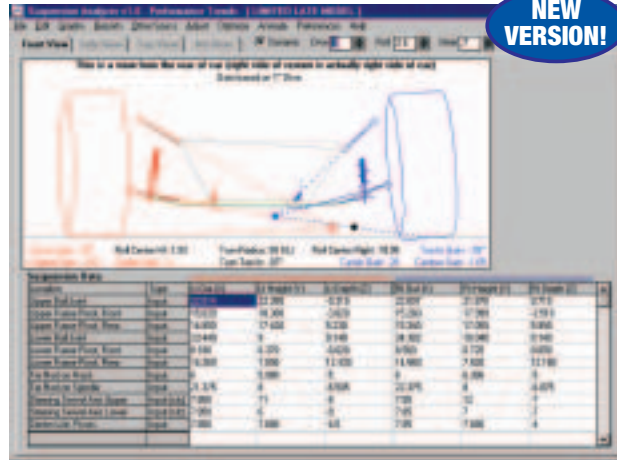
## Roll Center Calculator **PFTRC36C**



Software version 3.6 program simulates and analyzes double A-arm or McPherson strut style front suspensions for camber gain, roll center, wheel rate and more. Once car data is entered, the program has the ability to calculate instant centers, roll center, king pin angle, wheel rate, scrub radius, and camber gain. Data may then be analyzed and altered for further study and experimentation. Program requires an IBM or compatible computer with Windows 95/98/Me/XP/2000/NT and Vista.

## 3-D Double A-Arm (Double Wishbone) Suspension Analyzer **PFTSA24C**

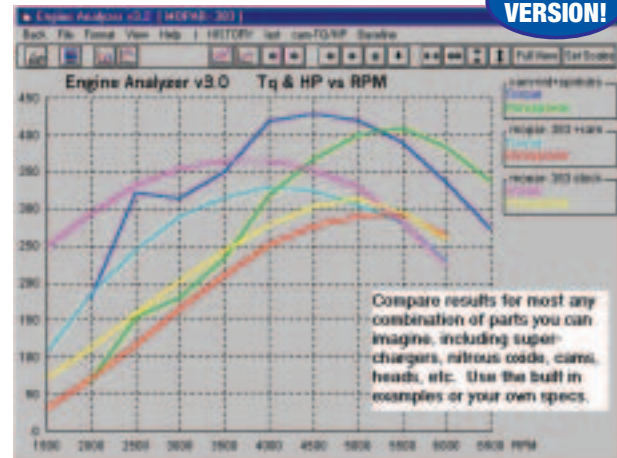
**NEW VERSION!**



Version 2.4 3-D suspension analyzer does a complete double A-arm suspension or McPherson strut analysis, including spring/shock/sway bar motion ratio, camber, caster, tire scrub, Ackermann, instant center height, roll center, spindle angle, anti dive % and more. Program requires an IBM or compatible computer with Windows 98/Me/XP/2000/NT and Vista.

## Engine Analyzer **PFTEA34C**

**NEW VERSION!**



Version 3.4 can simulate, predict and analyze stock or race engine performance. Change specs for cam, manifold or headers and see the effects. Engine output is through torque, horsepower or value plots. Program requires an IBM or compatible computer with Windows 95/98/Me/XP/2000/NT and Vista.



## Gasket Makers

Increased use of aluminum, bi-metal alloys, and high tech plastics has created the need for superior RTV silicone gasket makers. Permatex offers carded tubes or cartridges.

Description	Carded	Carded Oz.	Cartridge	Cartridge Oz.	Temp.
Ultra Black	PEX82180	3.35	PEX24105	10.6	-65° To 500°
Ultra Blue No Leak	PEX81724	3.35	—	—	-65° To 500°
Ultra Copper Hi-Temp	PEX81878	3	—	—	-75° To 700°
Ultra Grey	PEX82194	3.5	—	—	-65° To 500°
Blue Sensor Safe	PEX80022	3	—	—	-65° To 500°
Clear	PEX80050	3	PEX80855	11	-75° To 400°
Black	PEX81158	3	—	—	-75° To 400°
Hi-Temp	PEX81160	3	PEX81409	11	-65° To 650°
Sensor Safe Hi-Temp	PEX81422	3	—	—	-65° To 650°

## Gear Oil RTV Sealant PEX81182 **NEW!**

Specially formulated to withstand harsh gear oil, special silicone has been tested to OEM specifications to ensure complete sealing. 3 oz. carded tube.



## The Right Stuff Gasket Maker

Repair leaks quickly with The Right Stuff leakproof gasket maker. Modern rubber gasket technology is incorporated in this product which is used on production lines by GM, Ford and Chrysler. Temperature range is -75° to 450°F.

Part No.	Description
PEX25223	.....4 Oz. Tube
PEX25224	.....7 Oz. Tube
PEX29208	.....5 Oz. Cartridge
PEX33694	.....10 Oz. Tube



## Copper Spray-A-Gasket PEX80697

Sealant helps dissipate heat, improves heat transfer and prevents gasket burnout. Seals minor surface imperfections instantly. Ideal for head, exhaust manifold and carburetor gaskets. Temperature range -50° to 500°F. Sold in a 12 oz. aerosol can.



## High Performance Thread Sealant PEX56521

Formulated for tapered pipe fittings, sealant replaces Teflon tape or pipe dope. Works well on head bolts (that pass through water jackets), sending units, sensors, fuel fittings, oil and coolant lines, and rear axle fill plugs. 50ml tube.



## High Temperature Thread Sealants

Sealant is used to lock and seal threaded fittings or bolts. Often used on head bolts (that enter water jackets), oil sending units, fuel fittings, rear axle plugs, brake and power steering fittings, etc.

Part No.	Description
PEX59214	.....6ml Carded Tube
PEX59235	.....50ml Carded Tube



**Ground Shipment Only  
On Many Permatex Products**

## PermaPoxy PEX84101

Easy-to-use, 2-part epoxy bonds metal, fiberglass, rubber, plastic, etc. Sold in a .84 oz. carded syringe.



## Thread Sealant With Teflon

A general purpose fitting Sealant. Remains pliable at high or low temperatures. Effective from -65° to 300°F.

Part No.	Description
PEX80631	.....1 Oz. Tube
PEX80632	.....4 Oz. Can



## Threadlockers

Developed to positively lock and seal threaded fasteners. Threadlockers fill the space between threads on metal parts and then harden for a tough, adhesive bond and seal.

Part No.	Description
PEX24200	.....Medium Strength Blue, Carded 6ml Tube
PEX24240	.....Medium Strength Blue, Carded 36ml Bottle
PEX24300	.....Medium Strength Blue, Carded 10ml Bottle
PEX27100	.....Hi-Strength Red, Carded 6ml Tube
PEX27140	.....High Strength Red, Carded 36ml Bottle
PEX27200	.....Hi-Temp/Hi-Strength Red, Carded 10ml Bottle



## Anti-Seize Lubricant

Blend of aluminum, copper and graphite lubricants prevents galling, corrosion and seizing for easier disassembly. Works well anywhere, including lubrication of slip-on collectors, adjustable header tubes or any other exhaust tubing for easier disassembly. Effective from -60° to 1200°F.

Part No.	Description
PEX80078	.....8 Oz. Brush-Top Bottle
PEX81343	.....1 Oz. Carded Tube



## Ultra-Slick Engine Assembly Lube PEX81950

Ultra-Slick prevents galling and scuffing during critical initial engine start-up. Superior adhesion qualities meet or exceed stock performance specifications for engine assembly lubricant. Use on bearings, camshafts, lifters, valves, guides, and rocker shaft assemblies. 4 oz. bottle.



## Decal And Adhesive Remover PEX80025 **NEW!**

Fast-acting formula removes adhesive residue, decals, stickers, tape and other sticky substances. Contains no acetone and is safe for virtually any surface including auto paint, bumpers, vinyl, fabric, plastic, windows, etc. 5 oz. aerosol can.



## Fast Orange Hand Cleaners

The #1 selling, biodegradable, waterless solvent-free hand cleaner. Contains no harsh chemicals, mineral oils or ammonia that can irritate cuts and abrasions. Also available as a hand cleaner wipe.

Part No.	Description
PEX25108	.....Fine Pumice Cleaner, 7.5 Oz. Bottle
PEX25116	.....Fine Pumice Cleaner, 15 Oz. Bottle
PEX25219	.....Low Profile 1-Gallon Bottle With Pump <b>NEW!</b>
PEX25025	.....Hand Cleaner Wipes, 25 Count





## Flame-Thrower Billet "Plug N Play" Distributors

Affordable performance, ideal replacement for points or stock electronic distributors. Features the patented Ignitor II module, a 6061-T6 polished billet aluminum housing and a tempered .500" dia. shaft. Compatible with multiple spark CD boxes. Available with or without vacuum advance and with choice of male or female style distributor caps.



Description	Black Cap	Red Cap
<b>Vacuum Advance Distributors</b>		
Chevy, Standard Deck Height, Female Cap	PRTD100700	PRTD100701
Chevy, Standard Deck Height, Male Cap	PRTD100710	PRTD100711
SB Ford 221-302 (Except 5.0L), Female Cap	PRTD130700	PRTD130701
SB Ford 221-302 (Except 5.0L), Male Cap	-	PRTD130711
<b>Non-Vacuum Advance Distributors</b>		
Chevy, Standard Deck Height, Female Cap	PRTD100800	PRTD100801
Chevy, Standard Deck Height, Male Cap	PRTD100810	PRTD100811
SB Ford 221-302 (Except 5.0L), Female Cap	-	PRTD130801
SB Ford 221-302 (Except 5.0L), Male Cap	-	PRTD130811

## Flame-Thrower Race HEI Distributors

48% more peak current than street/strip distributors, with vacuum lockouts to prevent improper timing changes. High dielectric strength caps with brass terminals, balanced rotors, high output coils and modules are included. Black or red caps.



Description	Black Cap	Red Cap
Chevy V-8, All Exc. 348-409, Cast Housing	PRTD1070	PRTD1071

## Flame Thrower HV 60,000 Volt Coils

Highly efficient, E-core HV (high voltage) coils deliver a full 60,000 volts. Special heat sink and 6063-T5 aluminum construction allow operation in a wide temperature range without degradation. Offered in three Ohm ranges.

Part No.	Description
PRT60104	..... .45 Ohms, 4-, 6- Or 8-Cylinder Ignitor II Or Most CD Ignitions
PRT60130	..... 3.0 Ohms, 4- Or 6-Cylinder Ignitor Or Points Ignition



## Flame-Thrower Coils

The Flame-Thrower coils produce 40,000 volts and are available in black or chrome. For use with inductive or Ignitor ignition systems.

Part No.	Description
PRT40001	.....Chrome, Oil Filled, 1.5 OHM
PRT40011	.....Black, Oil Filled, 1.5 OHM
PRT40111	.....Epoxy (Black), 1.5 OHM



## Flame-Thrower II Coils

The Flame-Thrower II coils put out an incredible 45,000 volts. Compatible for use with Ignitor II or capacitive discharge ignition systems.

Part No.	Description
PRT45001	.....Chrome Flame-Thrower II Coil, Oil Filled, 0.6 Ohm
PRT45011	.....Black Flame-Thrower II Coil, Oil Filled, 0.6 Ohm
PRT45111	.....Epoxy (Black) Flame-Thrower II Coil, 0.6 Ohm



## Flame-Thrower HEI Tune-Up Kits

Kits have everything needed to improve a stock GM HEI distributor. Kits include coil, module, high dielectric strength cap, rotor, coil cover, adjustable vacuum advance, high performance advance kit, wiring harness, capacitor and hardware. Cap and rotor kits are also offered.



Description	Black Cap	Red Cap	Blue Cap
Chevy V-8, 4-Pin Module	PRTD8000	PRTD8001	PRTD8002
Cap And Rotor Only Kit, All GM V-8	PRTD4000	PRTD4001	PRTD4002

## GM HEI Distributor Accessories

Pertronix offers a full selection of components to help "wake up" your stock GM HEI distributor.

Part No.	Description
PRTD2070	.....Race Only HEI 4-Pin Module, 7.2 Amps
PRTD3070	.....Race Only HEI Ignition Coil, 0.35 Ohms
PRTD9010	.....Vacuum Advance Lockout, Clockwise Rotation Distributors



## Flame-Thrower Digital Rev Limiter PRT600

Digital rev limiter is compatible with any 4, 6 or 8 cylinder engine using points, original equipment electronic (GM HEI, Ford, Chrysler) or aftermarket inductive ignition systems including the Ignitor and Ignitor II. The unit's small size (2.5" x 3" x 1.4") and four-wire hook-up make it easy to install. Setting is easy with external digital rotary switches (eliminate RPM "chips").



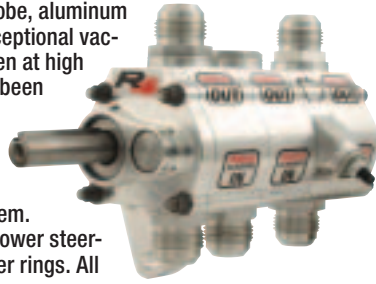
## Second Strike PRT500

The Ignition box delivers a powerful second spark throughout the entire RPM range. Micro controller unit supplements most inductive type (points, GM HEI, Ford TFI and Duraspark, Ignitor and Ignitor II) ignitions to provide increased burn time at high engine speeds for more horsepower and torque. A built-in digital rev limiter provides overrev protection and is easily adjusted with external rotary switches.

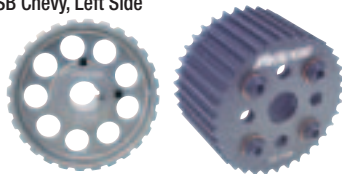


## R4 Series Dry Sump Oil Pumps

Innovative oil pump's four-lobe, aluminum rotor offers superior flow, exceptional vacuum and steady pressure, even at high oil temperatures. Weight has been minimized without compromising strength or durability through the use of profile machined billet aluminum and a modular mounting system. The rear drive mounts to all power steering pumps, eliminating adapter rings. All pumps listed are standard pressure, unless noted.



Part No.	Description
PTR04-3000	3-Stage Pump, SB Chevy, Left Side
PTR04-4000	4-Stage Pump, SB Chevy, Left Side
PTR04-4020	4-Stage Pump, SB Chevy, Right Side
PTR04-5000	5-Stage Pump, SB Chevy, Left Side



Description	Gilmer	HTD
<b>SB Chevy Pump Installation Accessories</b>		
Oil Pump Pulley	PTR06-0328 (28T)	PTR06-1333 (33T)
Crankshaft Pulley For Oil Pump Drive	PTR05-0216 (16T)	PTR05-1219 (19T)
Water Pump Pulley	PTR05-0432 (32T)	PTR05-1435 (35T)
Crankshaft Pulley For Water Pump Drive	PTR05-0221 (21T)	PTR05-1225 (25T)
Belt For Oil Pump	PTR05-0908 (24")	PTR05-1904 (632mm)
Belt For Water Pump	PTR05-0908 (24")	PTR05-1903 (600mm)

## R4 Oil Pump Mount Plates

Because gerotor gears minimize vibration, only one billet aluminum plate is needed to mount Peterson R4 dry sump oil pumps.

Part No.	Description
PTR14-3101-001	Mounting Bracket For SB Chevy, Right Side
PTR14-3100-001	Mounting Bracket For SB Chevy, Left Side
PTR14-3701-001	Mounting Bracket For Bellhousing



## R4 Oil Pump Fittings

Specialized fittings feature a special thread and use a short depth to reduce weight and keep a low profile. Fittings additionally utilize an internally radiused, high flow design for maximized performance. Sold each.

Part No.	Description
PTR14-0010	-10AN Fitting
PTR14-0012	-12AN Fitting
PTR14-0016	-16AN Fitting
PTR14-0020	-20AN Fitting



## R4 Rear Drive Adapters

Designed for use with R4 oil pumps, adapter allows running a power steering or fuel pump off of the back of the oil pump.

Part No.	Description
PTR14-2190	Fuel Pump Adapter
PTR14-2191	KSE Power Steering Pump Adapter



PTR14-2191

## R4 Series Bellhousing Mount Dry Sump Oil Pumps

R4 Series dry sump oil pumps bolt directly to a Bert or Brinn bellhousing. Pumps with rear drive accept KSE tandem pumps and Sweet power steering pumps. All pumps listed are standard pressure, unless noted.



Part No.	Description
PTR04-3056	3-Stage Pump, Rear Drive, Bert/Brinn
PTR04-4050	4-Stage Pump, Bellhousing Mount, Standard Volume 1.200"
PTR04-4052	4-Stage Pump, Non-Rear Drive, Bert/Brinn, High Volume 1.400"
PTR04-4056	4-Stage Pump, Rear Drive, Bert/Brinn
PTR04-5050	5-Stage Pump, Bellhousing Mount
PTR04-5054	5-Stage Pump, Rear Drive, Bert/Brinn
PTR04-5056	5-Stage Pump, Rear Drive, Bert/Brinn, High Pressure

### Related Components

PTR14-3701-001 ..... Mounting Bracket For Bellhousing

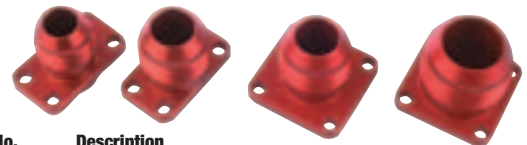


Description	Gilmer	HTD
<b>Bert/Brinn Pump Installation Accessories</b>		
Oil Pump Pulley	PTR06-0332 (32T)	PTR06-1340 (40T)
Belt For Oil Pump	PTR05-0908 (24")	PTR05-1905 (640mm)
Pulley Flanges	PTR05-0632*	PTR05-1640*

\* Sold Individually, two required.

## Pro Rotor Pump Fittings-Flange Style

High flow, fully radiused fittings are engineered for use with older style Pro Series dry sump oil pumps.



Part No.	Description
<b>Scavenge In/Pressure Out Small 4-Bolt Flange</b>	
PTR15-1101	-10AN x Small Port Pro Rotor
PTR15-1102	-12AN x Small Port Pro Rotor
PTR15-1141	-10AN x 45° Small Port Pro Rotor
PTR15-1142	-12AN x 45° Small Port Pro Rotor
<b>Rear Inlet Pressure In/Scavenge Out Large 4-Bolt Flange</b>	
PTR15-1103	-12AN x Large Port Pro Rotor
PTR15-1104	-16AN x Large Port Pro Rotor
PTR15-1105	-12AN x 90° Large Port Pro Rotor
PTR15-1106	-16AN x 90° Large Port Pro Rotor

Part No.	Description
<b>Side Inlet Pressure In, Oval Port</b>	
PTR15-1109	-16AN x Oval Port Pro Rotor
PTR15-1110	-12AN x Oval Port Pro Rotor

**Note: Fittings will not fit R4 series oil pumps.**



Angelo Buchino

Photo By: Jim DenHamer

## Dry Sump Pump Fittings - Male Thread

Designed for Pro Series dry sump oil pumps, large bore, anodized fittings are radiused to provide maximum oil flow.

Part No.	Description
PTR15-1005.....	-10AN x -10AN Port
PTR15-1006.....	-12AN x -10AN Port
PTR15-1007.....	-16AN x -10AN Port

**Note:** Fittings will not fit R4 series oil pumps.



## Direct Mount Scavenge Manifolds

Peterson's aluminum Direct Mount Scavenge Manifolds attach directly to the pump, reducing the number of hoses necessary to return scavenge oil from the pump to the tank.

Part No.	Description
PTR10-0103.....	4 Stage, -12, -12, -12, -16 Peterson Pump
PTR10-0300.....	3 Stage, -12, -12, -12 Weaver, SCP Pump
PTR10-0301.....	3 Stage, -12, -12, -16 Weaver, SCP Pump
PTR10-0303.....	4 Stage, -12, -12, -12, -16 Weaver, SCP Pump



## Remote Relief Valve

Remote relief valve allows oil pressure to be adjusted where rules require that the oil pump be in the stock location. May also be used in dry sump applications to make the pressure regulator more accessible.

Part No.	Description
PTR09-0160.....	Remote Relief Valve, -10AN Fittings
PTR09-0161.....	Remote Relief Valve, -12AN Oil Fittings, -10AN Relief Line Fitting



## Y-Manifolds

When multiple oil lines need to be combined in a single high flow line, the tubular or billet aluminum Y-manifolds gets the job done.

Part No.	Description
PTR10-0030.....	Billet Aluminum Y-Manifold, -6, -6, -6
PTR10-0033.....	Billet Aluminum Y-Manifold, -10, -8, -8
PTR10-0041.....	Billet Aluminum 4-Way Manifold, -8, -6, -6, -6
PTR10-1721.....	Aluminum Tube Y-Manifold, -12, -12, -12
PTR10-1725.....	Aluminum Tube Y-Manifold, -16, -12, -12



PTR10-0033



PTR10-1725

## In-Line Temp Port Assembly

In-line temperature sender fitting assembly has a standard 5/8"-18 threaded port for a temperature probe.

Part No.	Description
PTR09-1940.....	-10AN Nose x -10AN Nose
PTR09-1960.....	-12AN Nose x -12AN Nose



## Small Block Chevy Oil Pump Drive Kits Oval Track/Road Race Kits

Includes 3.250" long mandrel, 5-1/2" double groove V-belt pulley to drive water pump, crankshaft and oil pump pulleys, belt pulley guide washers and installation hardware. Designed for pre-1964 short water pump. Drives oil pump at 57% of crank speed. Water pump pulley is not included.

Part No.	Description
PTR05-0103.....	Gilmer Drive Kit
PTR05-1103.....	HTD Drive Kit



## Oval Track/Road Race Kits With Gilmer Belt Water Pump Drives

Includes 5.000" mandrel, crank and oil pump pulleys, two belts, pulley guide, installation hardware and water pump pulleys for Gilmer belt. Use with pre-1964 Chevy short water pumps. Systems drive oil pump at 57% of crank speed.

Part No.	Description
PTR05-0110.....	Gilmer Drive Kit, 40% Reduction On Water Pump Speed
PTR05-0111.....	Gilmer Drive Kit, 30% Reduction On Water Pump Speed



## Small Block Chevy Water Pump Drive Kits

Peterson offers water pump drive kits for small block Chevy in choice of Gilmer or HTD versions. Each kit is complete with crankshaft and water pump pulleys, and drive belt. Kits are offered in several water pump speed percentage reductions.

Part No.	Description
<b>Gilmer Belt Drives</b>	
<b>7% Reduction 240 L 100 Belt</b>	
PTR05-0428	Water Pump Pulley, 28T
PTR05-0226	Crank Pulley, 26T
<b>30% Reduction 240 L 100 Belt</b>	
PTR05-0432	Water Pump Pulley, 32T
PTR05-0221	Crank Pulley, 21T
<b>40% Reduction 225 L 100 Belt</b>	
PTR05-0428	Water Pump Pulley, 28T
PTR05-0217	Crank Pulley, 17T

Part No.	Description
<b>HTD Belt Drives</b>	
<b>10% Reduction 640-8m-20 Belt</b>	
PTR05-1437	Water Pump Pulley, 37T
PTR05-1233	Crank Pulley, 33T
<b>29% Reduction 600-8m-20 Belt</b>	
PTR05-1435	Water Pump Pulley, 35T
PTR05-1225	Crank Pulley, 25T



Bill Hartman

Photo By: Jim DenHamer



Kevin "Buzzy" Adams

Photo By: Chris Burback

## Gilmer Pulleys

Gilmer Pulleys are CNC-machined from billet aluminum and hard-coated for durability.

**Part No. Description**

**Crank Driven Pulleys – .560" Wide, 1" Bore, 1/8" Keyway, Use with 1/2" Wide Belt**

PTR05-0204..... 14-Tooth  
 PTR05-0206..... 16-Tooth  
 PTR05-0207..... 17-Tooth  
 PTR05-0208..... 18-Tooth

**Crank Driven Pulleys – 1.020" Wide, 1" Bore, 1/8" Keyway, Use with 1" Wide Belt**

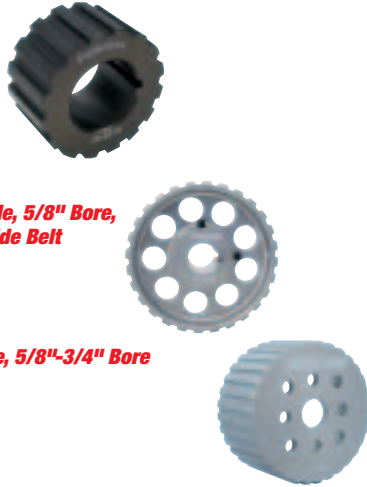
PTR05-0214..... 14-Tooth  
 PTR05-0216..... 16-Tooth  
 PTR05-0217..... 17-Tooth  
 PTR05-0218..... 18-Tooth  
 PTR05-0219..... 19-Tooth  
 PTR05-0221..... 21-Tooth  
 PTR05-0224..... 24-Tooth  
 PTR05-0226..... 26-Tooth

**Oil Pump Pulleys – 1.020" Wide, 5/8" Bore, 3/16" Keyway, Use with 1" Wide Belt**

PTR06-0324..... 24-Tooth  
 PTR06-0328..... 28-Tooth  
 PTR06-0332..... 32-Tooth  
 PTR06-0336..... 36-Tooth

**Water Pump Pulleys – 2" Wide, 5/8"-3/4" Bore**

PTR05-0424..... 24-Tooth  
 PTR05-0428..... 28-Tooth  
 PTR05-0432..... 32-Tooth



## Gilmer Belts

Gilmer style (cog) belts, are used to drive dry sump oil pumps and other engine accessories.

**Part No. Description**

**1/2" Wide**

PTR05-0900.....210-L-050, 21" Long  
 PTR05-0903.....225-L-050, 22.5" Long  
 PTR05-0906.....240-L-050, 24" Long  
 PTR05-0909.....255-L-050, 25.5" Long  
 PTR05-0912.....270-L-050, 27" Long  
 PTR05-0915.....285-L-050, 28.5" Long  
 PTR05-0918.....300-L-050, 30" Long  
 PTR05-0924.....322-L-050, 32.2" Long  
 PTR05-0960.....345-L-050, 34.5" Long

**3/4" Wide**

PTR05-0901.....210-L-075 - 21" Long  
 PTR05-0910.....255-L-075 - 25.5" Long  
 PTR05-0919.....300-L-075 - 30" Long  
 PTR05-0925.....322-L-075 - 32.2" Long

**1" Wide**

PTR05-0902.....210-L-100, 21" Long  
 PTR05-0905.....225-L-100, 22.5" Long  
 PTR05-0908.....240-L-100, 24" Long  
 PTR05-0911.....255-L-100, 25.5" Long  
 PTR05-0914.....270-L-100, 27" Long  
 PTR05-0917.....285-L-100, 28.5" Long  
 PTR05-0920.....300-L-100, 30" Long  
 PTR05-0926.....322-L-100, 32.2" Long



Andy McDermid

Photo By: Mike Kalling

## HTD Pulleys

HTD (High Torque Drive) CNC-machined aluminum Pulleys are hard-coat anodized for durability. Pulleys have 8mm pitch.

**Part No. Description**

**Crank Driven Pulleys – 1.020" Wide, 1" Bore, 1/8" Keyway**

PTR05-1218..... 18-Tooth  
 PTR05-1219..... 19-Tooth  
 PTR05-1220..... 20-Tooth  
 PTR05-1221..... 21-Tooth  
 PTR05-1222..... 22-Tooth  
 PTR05-1223..... 23-Tooth  
 PTR05-1225..... 25-Tooth  
 PTR05-1233..... 33-Tooth

**Oil Pump Pulleys – 1.020" Wide, 5/8" Bore, 3/16" Keyway**

PTR06-1332..... 32-Tooth  
 PTR06-1333..... 33-Tooth  
 PTR06-1334..... 34-Tooth  
 PTR06-1335..... 35-Tooth  
 PTR06-1336..... 36-Tooth  
 PTR06-1337..... 37-Tooth  
 PTR06-1338..... 38-Tooth  
 PTR06-1340..... 40-Tooth  
 PTR06-1340-W\*..... 40-Tooth  
 PTR06-1344..... 44 Tooth  
 PTR06-1349..... 49-Tooth

**Water Pump Pulleys – 2" Wide, 5/8"-3/4" Bore**

PTR05-1435..... 35-Tooth  
 PTR05-1437..... 37-Tooth

\* 30mm (1.259" Wide) Pulley



## HTD Belts

HTD (High Torque Drive) have round teeth for deeper pulley engagement, making them capable of withstanding more load in severe applications.

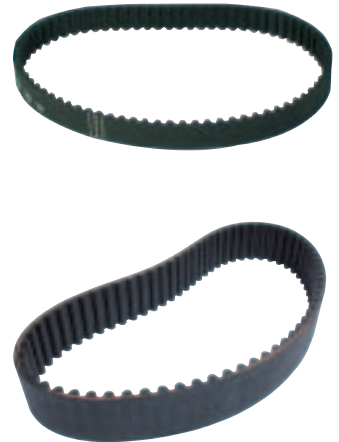
**Part No. Description**

**20mm Wide - 8mm Pitch**

PTR05-1900.....480mm  
 PTR05-1901.....536mm  
 PTR05-1902.....560mm  
 PTR05-1903.....600mm  
 PTR05-1908.....624mm  
 PTR05-1904.....632mm  
 PTR05-1905.....640mm  
 PTR05-1909.....656mm  
 PTR05-1910.....680mm  
 PTR05-1906.....720mm  
 PTR05-1912.....760mm  
 PTR05-1907.....800mm

**30mm Wide - 8mm Pitch**

PTR05-1931.....536mm  
 PTR05-1933.....600mm  
 PTR05-1935.....640mm  
 PTR05-1939.....656mm



## Pulley Flanges

Anodized, aluminum billet flanges press into the pulley and act as belt guides. Flanges fit Peterson pulleys, but may not fit pulleys manufactured by other companies. Sold individually.

**Part No. Description**

PTR05-0624.....Fits 05-0324 Pulley  
 PTR05-0628.....Fits 05-0328, 05-1334, 05-1335 Pulleys  
 PTR05-0632.....Fits 05-0332 Pulley  
 PTR05-1633.....Fits 05-1333 Pulley  
 PTR05-0636.....Fits 05-0336 Pulley  
 PTR05-1632.....Fits 05-1332 Pulley  
 PTR05-1636.....Fits 05-1336 Pulley  
 PTR05-1637.....Fits 05-1337 Pulley  
 PTR05-1638.....Fits 05-1338 Pulley  
 PTR05-1640.....Fits 05-1340 Pulley  
 PTR05-1644.....Fits 05-1344 Pulley



## Oil Pump Drive Mandrels And Bolts

Stress-proof steel mandrels provide the precision and dependability that racers demand. Mandrel bolts are grade 8 and include L-9 washers.



Part No.	Description	Part No.	Description
<b>Steel Mandrels</b>		<b>Mandrel Bolts</b>	
PTR05-0701	SBC 1.250" Long	PTR05-0751	7/16"-20 X 3-1/2"
PTR05-0702	SBC 2.400" Long	PTR05-0752	7/16"-20 X 5"
PTR05-0703	SBC 3.250" Long	PTR05-0753	7/16"-20 X 6"
PTR05-0704	SBC 5.000" Long	PTR05-0754	7/16"-20 X 8"
<b>Aluminum Mandrels</b>		<b>Keys</b>	
PTR05-0706	SBC 2.400" Long	PTR05-0297	Key Stock 1/8" x 1.870" 2 pk.
PTR05-0707	SBC 3.250" Long	PTR05-0299	Key Stock 1/8" x 6" 2 pk.
		PTR05-0399	Key For Pump Pulleys 3/16" x 1.500"

## Drive Pulley Guide And Step Washers

Peterson Drive Pulley Guide and Step Washers are machined from 6061-T6 aluminum and are a must for proper belt alignment.

Part No.	Description
PTR05-0730	Step Washer, 2-1/2" O.D. With 7/16" Bolt Hole
PTR05-0731	Step Washer, 2-1/2" O.D. With 1/2" Bolt Hole
PTR05-0732	Step Washer, 2-1/2" O.D. With 5/8" Bolt Hole
PTR05-0735	Guide Washer, 2-3/4" O.D. With 1" I.D. Hole, .125" Thick
PTR05-0736	Guide Washer, 3-1/4" O.D. With 1" I.D. Hole, .125" Thick
PTR05-0737	Guide Washer, 3-1/2" O.D. With 1" I.D. Hole, .125" Thick



## Mandrel Spacers

Peterson Mandrel Spacers are available in thicknesses from .250" to 1.250" and properly space/align the mandrel pulley pack. Spacers are machined from 6061-T6 aluminum and can be easily modified to accommodate non-standard sizes.

Part No.	Description
PTR05-0740	0.250" Thick
PTR05-0741	0.375" Thick
PTR05-0742	0.500" Thick
PTR05-0743	0.750" Thick
PTR05-0744	1.000" Thick
PTR05-0746	1.250" Thick



## Scavenge Filters

Peterson's aluminum billet Inline Filters remove harmful debris from the oil before it reaches the pump. The free-flowing units have twice the filter area of dry sump pan screens.

Part No.	Description
<b>Inline Scavenge Filters</b>	
PTR09-0401	-8AN, Use On Lifter Valley Scavenge Or With Rear End Pumps
PTR09-0402	-10AN, Use With Dry Sump Pan Or Lifter Valley Scavenge Lines
PTR09-0403	-12AN, Use With Dry Sump Pan Lines
PTR09-0405	-16AN
<b>Inline 90° Scavenge Filters</b>	
PTR09-0406	-8AN, Use On Lifter Valley Scavenge Or With Rear End Pumps
PTR09-0407	-10AN, Use With Dry Sump Pan Or Lifter Valley Scavenge Lines
PTR09-0408	-12AN, Use On Dry Sump Pan
<b>Replacement Screens</b>	
PTR09-0410	Fits PTR09-0402, PTR09-0403, PTR09-0407, PTR09-0408
PTR09-0411	Fits PTR09-0401, PTR09-0406



## Remote Filter Mount With Primer Pump **NEW!**

Reduce premature engine wear by priming the engine before starting. Billet aluminum, remote filter mount has a small pump that can provide 20 PSI in as little as 10 seconds using a standard 3/8" drill. Mount accepts 1-1/2"-12 threaded oil filters and includes AN fittings. Mounting brackets, in tube or flange mount versions, must be purchased separately.

### Part No. Description

#### Remote Filter Mounts ( 1-1/2"-12 Thread Oil Filters )

PTR09-1560	Remote Filter Mount, -10AN Fittings
PTR09-1561	1-1/2"-12 Thread Oil Filters, -12AN Fittings

#### Mounting Brackets

PTR09-1590	1-1/4" Dia. Tube
PTR09-1592	1-1/2" Dia. Tube
PTR09-1593	1-3/4" Dia. Tube
PTR09-1594	Flange Mount



## Dry Sump Pan Filters

Aluminum billet filter bolts directly to the pan fittings and provides an accessible screen to protect valuable dry sump pump from ingesting internal engine debris. Screen can easily be inspected without removing pan. 2-1/4" long body. Offered in traditional or 90° versions.

Part No.	Description
PTR09-0404	Filter With -12AN fitting
PTR09-0411	Replacement Screen



## 400 Series Inline Oil Filters

Inline oil filters have 25% more filter area than similar units and are available in 60 and 75 micron configurations for engine oil. 2-1/2" filter bodies are hard anodized. Filter mounting brackets are sold separately.

### Part No. Description

#### Inline Oil Filters

PTR09-0438	-12AN Filter, 75 Micron Element, Without Bypass
PTR09-0439	-16AN Filter, 75 Micron Element, Without Bypass
PTR09-0452	-12AN Filter, 60 Micron Element, With Bypass
PTR09-0457	-10AN Filter, 60 Micron Element, Without Bypass
PTR09-0458	-12AN Filter, 60 Micron Element, Without Bypass

#### Filter Mounting Brackets (Sold In Pairs)

PTR09-0492	Filter Mount Bracket, Fits 1-1/2" Dia. Tubing
PTR09-0493	Filter Mount Bracket, Fits 1-3/4" Dia. Tubing
PTR09-0494	Filter Mount Bracket, Firewall Mount

#### Replacement Element

PTR09-0440	75 Micron Element, -8, -10, -12, -16AN Filters, Gold/Blue Endcaps
PTR09-0460	60 Micron Element, -8, -10, -12, -16AN Filters, Gold/Blue Endcaps



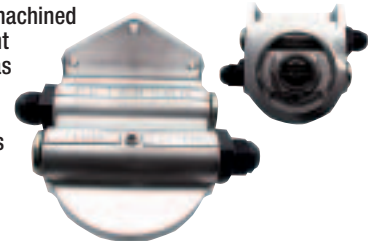
## Large Diameter Remote Filter Mount

Remote filter mount is CNC machined from aircraft aluminum for light weight and strength. Mount has two inlet and two outlet ports which are -12AN. Mounts include two AN adapter fittings and two solid plugs. Used with Fram HP6 filter.

Part No.	Description
<b>1-1/2"-12 Filter Mounts</b>	
PTR09-0530	-10AN Fittings
PTR09-0531	-12AN Fittings

#### Accessory Components

PTR08-0501	-10AN x -12 Port Fitting
PTR08-0502	-12AN x -12 Port Fitting
PTR08-0505	-12AN Port Plug - Solid
PTR15-1010	-12AN Port Plug x 5/8"-18 Temp. Port





## Oil Filter Block Off Plates

Oil filter block off plates facilitate the installation of wet and dry sump oil pressure lines to the stock oil filter pad. Plates are made from aluminum billet and include mounting hardware.

Part No.	Description
PTR09-0002.....	Early Chevy V-8, -12AN Fitting With (1) 3/8"-16 Bolt Mount
PTR09-0004.....	Chevy Bow Tie Block, -12AN Fitting With (2) 5/16"-18 Bolts Mount
PTR09-0011.....	Ford V-8 With -12AN Fitting
PTR09-0020.....	Replacement Square O-Ring For PTR09-0001 Thru PTR09-0004v



## Adjustable Vacuum Regulator PTR08-0455

Billet aluminum adjustable vacuum regulator allows regulating crankcase vacuum, which helps maximize ring seal and engine performance. Adjustable from 2-29.7 in/hg.



## One Way Valve Pop Off PTR08-0450

Breather assembly is installed in valve cover on engine's running crankcase in vacuum condition. Valve seals engine from air entering engine, but opens in the event of crankcase pressure, allowing crankcase to vent. Includes -12AN bung to weld to aluminum valve cover.



## Screw-In Breather PTR08-0415

Internally baffled breather has -12AN male threads to fit bung on Peterson dry sump tanks. May also be used on valve covers.



## Oil Pressure Gauge Fittings

Special fittings, designed by Karl Kinser, gets the oil pressure gauge line up where it is more accessible. Fitting is 1/8" NPT on engine end, while the gauge connection is -4AN.

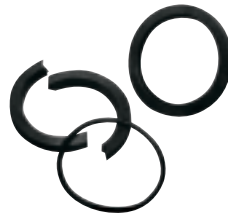
Part No.	Description
PTR15-1040.....	Oil Pressure Gauge Fitting, 90°
PTR15-1041.....	Oil Pressure Gauge Fitting, Straight



## Teflon Engine Seals

Hard-to-find PTFE engine seals assure maximum vacuum levels for engines with dry sump oil systems. Seals are manufactured by TKO Competition Development.

Part No.	Description
PTRSM86410.....	Rear Main Seal, SB Chevy 400
PTRSM86586.....	Jesol Front Cover, Chevy Cam Seal
PTRSM86587.....	Jesol Front Cover, SB Chevy Crank Seal
PTRSM86625.....	Rear Main Seal, SB Chevy 350
PTRSM86990.....	Front Crank Seal, SB Chevy



## SB Chevy Manifold End Rail Spacers

Fill the gap between the manifold and the lifter valley end rails when using raised port cylinder heads on small block Chevy engines. Sold in pairs, Spacers include four 3/16" roll pins for retention. Drilling of the block is required for installation.

Part No.	Description
PTR09-1060.....	Spacer Set, .125" Thick
PTR09-1061.....	Spacer Set, .187" Thick
PTR09-1062.....	Spacer Set, .250" Thick
PTR09-1063.....	Spacer Set, .375" Thick



## Dirt Late Model Oil Tanks

Dry sump tanks include a built in oil filter which keeps the tanks clean of engine debris and lessens oil aeration. "Center breather" system allows air to escape out the bottom, leaving oil where it belongs. No more messy breathers. Also includes an oil heater bung for probe style heaters. Available in standard or lay down filter versions. Brackets sold separately. Use bracket PTR08-0106

Part No.	Description
PTR08-0911-DB.....	DLM Tank With Standard Filter
PTR08-0911-CJR.....	DLM Tank With Lay Down Filter
PTR08-1900.....	Replacement Filter



PTR08-0911-CJR

## Dry Sump Oil Tanks

"New Generation" oil tanks are built with state-of-the-art components and internal baffling, which prevents oil aeration while helping to maintain a tall column of oil over the pick-up. Easily disassembled and tops can be rotated for easy placement of fittings. Brackets sold separately.

Part No.	Description
PTR08-0005*	....2 Gal. Single Scavenge Inlet, 19.5" Ht. x 6" Dia.
PTR08-0007*	....2.5 Gal. Single Scavenge Inlet, 24" Ht. x 6" Dia.
PTR08-0008*	....2.5 Gal. Dual Scavenge Inlet, 24" Ht. x 6" Dia.
PTR08-0009*	....3 Gal. Single Scavenge Inlet, 16" Ht. x 9" Dia.
PTR08-0011†	....4 Gal. Single Scavenge Inlet, 19" Ht. x 9" Dia.
PTR08-0027*	....Similar to PTR08-0007 With -12AN Male Fittings
PTR08-0028*	....Similar to PTR08-0008 With -12AN Male Fittings
PTR08-0110.....	Replacement O-Ring For 6" Dia. Tanks
PTR08-0112.....	Replacement Viton O-Ring For 9" Dia. Tanks

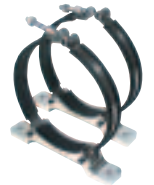
\* Use Mount Bracket PTR08-0100.  
† Use Mount Bracket PTR08-0101.



## Dry Sump Oil Tank Mounting Brackets

Mounting brackets are machined from billet aluminum and include EPDM rubber-lined stainless steel straps. Sold in pairs.

Part No.	Description
PTR08-0100.....	For 6" Dia. Tanks
PTR08-0101.....	For 9" Dia. Tanks
PTR08-0106.....	Dirt Late Model Style, Use On PTR08-0911, Clamps To 1-1/2" Dia. Tubing



## Dry Sump Tank Fittings

Anodized aluminum fittings complete the installation of any Peterson dry sump tank.

Part No.	Description
PTR08-0501.....	-10AN Hose x -12AN Port
PTR08-0502.....	-12AN Hose x -12AN Port
PTR08-0503.....	-16AN Hose x -12AN Port
PTR08-0504.....	-6AN Port Plug (Tank Drain)
PTR08-0505.....	-12AN Port Plug (Tank Drain)
PTR08-0506.....	O-Ring Kit, -12AN (5 Per Pack)



## Remote Breather Cans

Aluminum cans have internal baffling to prevent foaming and overflow from the dry sump tank. Mounting clamp is included.

Part No.	Description
PTR08-0400.....	Spun Aluminum Tank, (2) -12AN Female Ports And (1) Drain Plug
PTR08-0410.....	Spun Aluminum 3" Dia. Tank, Designed To Breathe Oil Tank And Rear End, (1) -12AN Male Fitting, (1) -8AN Male Fitting And Quick Drain Valve



## Oil Tank Heaters

Pre-heating of dry or wet sump systems on a race engine ensures increased horsepower and good lubrication upon initial start-up. Immersion-style heater does a great job of pre-heating and only requires welding a threaded bung into the tank. Wrap around styles can be glued to the outside of the tank or pan.



Part No.	Description
PTR08-0300	300 Watt Immersion Style 110 Volt With Detachable Cord Set, Steel And Aluminum 1/2" NPT Weld Bungs
PTR08-0301	300 Watt Wrap Around Pad, 2" x 15", 110 Volt With Detachable Cord Set, Attaches With Hi-Temp RTV Silicone
PTR08-0302	400 Watt Wrap Around Pad, 4" x 10", 110 Volt With Detachable Cord Set, Attaches With Hi-Temp RTV Silicone

## Lightweight Cap And Bung Assemblies

Billet aluminum cap and bung assemblies are useful when fabricating custom tanks. Cap is anodized red.



Part No.	Description
PTR08-0611	Cap And Bung Assembly, 1-7/16" Dia.
PTR08-0621	Cap And Bung Assembly, 3" Dia.

## Water Neck Riser Block

Peterson's riser blocks are available with two AN ports to accommodate circulation of the water to the cylinder heads via -6AN or -8AN lines. A model with a water temperature sender port is also available. An O-ring seal is provided on the flange.



Part No.	Description
PTR10-2250	1" Thick Plain Riser, Accepts Thermostat
PTR10-2251	1" Thick Riser, Two -6AN Ports
PTR10-2252	1" Thick Riser, Two -6AN Ports With Water Temp. Sender Port
PTR10-2256	1-1/4" Thick Riser, Two -8AN Ports

## Swivel Water Necks

Necks swivel 360° for exact hose alignment. Viton Seals are used internally and an O-ring seal is provided on the flange.



Part No.	Description
PTR10-2216	-16AN Water Neck
PTR10-2220	-20AN Water Neck

## Fuel Pressure Regulator Fittings

Machined from aluminum, anodized fittings have large bores and are radiused on the inlet sides for optimum flow.



Part No.	Description
PTR15-1002	Fuel Regulator -10AN x -8 Port
PTR15-1003	Fuel Regulator -6AN x -6 Port
PTR15-1004	Fuel Regulator -8AN x -8 Port

# PIONEER

Automotive Industries LLC



## Freeze Plug Kits

Skin packaged cards contain all freeze and pipe plugs necessary for a short block. Available in traditional steel or brass.

Application	Steel Part No.	Brass Part No.	Non-Carded Steel
SB Chevy 262-350	PIOPE100	PIOPE100B	PIOPE100R
SB Chevy 400	PIOPE101	PIOPE101B	-
SB Ford 289-351W	PIOPE108	PIOPE108B	-

## Cylinder Head Dowel Pin Kits

Each kit includes four dowel pins.

Part No.	Description
PIOS-1110	SB Chevy 265-400
PIOS-1112	SB Ford 221-351W



Ricky Wells

## Aerosol Engine Enamels



Engine enamels dry quickly to a tough, durable finish resistant to blistering and peeling. Choose from a variety of colors.

Part No.	Color	Part No.	Color
PIOT-10-A	Chevy Orange	PIOT-55-A	Gloss White
PIOT-11-A	Ford Blue	PIOT-56-A	High Heat Black
PIOT-17-A	Ford Dark Blue	PIOT-58-A	Cast Iron Gray
PIOT-19-A	Chevy Blue	PIOT-59-A	Clear
PIOT-26-A	Universal Black	PIOT-60-A	Universal Gray
PIOT-27-A	Aluminum	PIOT-61-A	Lo-Gloss Black
PIOT-37-A	Gloss Gray	PIOT-62-A	High Heat Aluminum
PIOT-50-A	Light Gray Primer	PIOT-63-A	High Heat Cast Iron Gray
PIOT-52-A	Red Oxide Primer	PIOT-64-A	Black Primer
PIOT-54-A	Flat Black	PIOT-65-A	Stainless Steel

Ground  
Shipment  
Only



## Trailer Door Cabinets

Cabinets are heli-arc welded .090" aluminum for long term strength and durability. Each cabinet includes a fold-down table for added work space, paper towel holder, and enough shelving to hold aerosol cans, oil containers, cleaners, etc.

Part No.	Description
PIT320	Door Cabinet, 30" H. x 25" W. x 5.5" D.
PIT321	Jr. Door Cabinet, 19.5" H. x 12" W. x 4.5" D.



## 25th Anniversary Edition Trailer Door Cabinet

### PIT320A

Similar to Pit Pal's original trailer door cabinet with wider and deeper shelves to store up to 20 qts. of oil. Aluminum cabinet is 27" wide x 32" high x 6-3/4" deep with two paper towel holders and a top shelf that holds up to nine aerosol cans.



## Oil Storage Cabinet PIT310

Store up to eight aerosol cans on the top shelf and as many as 29 quarts of oil or filters on the lower shelves. Dimensions: 24-1/2" H. x 36" W. x 5-1/2" D.



## Junior Oil Cabinet PIT313

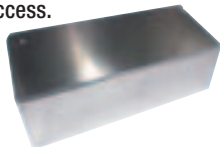
Smaller, heavy duty .090" aluminum cabinet unit neatly stores 12 quarts of oil and is a great way to help organize the home, garage or shop. Dimensions: 16" H. x 16" W. x 5-1/2" D.



## All-Purpose Bottle Shelves

Store miscellaneous spray bottles for easy access.

Part No.	Description
PIT110	4 Container, 10" x 5" Deep
PIT111	6 Container, 14-1/2" x 5" Deep



## Aerosol Spray Can Shelves

Strong .090" aluminum shelves fit anywhere for convenience, with room for 8 or 12 aerosol cans.

Part No.	Description
PIT100	8 Can, 21-1/2" x 2-3/4"
PIT101	12 Can, 32-1/2" x 2-3/4"



## Trailer Fuel Jug Racks

Heli-arc welded .090" aluminum racks mount easily on trailer floor or wall. Racks will hold round or square fuel jugs safely and securely inside trailer.

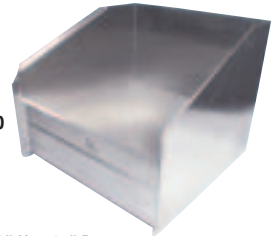
Part No.	Description
PIT181	2 Jug Rack, 23" L. x 12" D. x 13" H.
PIT182	3 Jug Rack, 34-1/2" L. x 12" D. x 13" H.
PIT183	4 Jug Rack, 46" L. x 12" D. x 13" H.



## Helmet Shelves

Store helmet, neck brace, gloves, ear protectors and related items, and hang up to eight uniforms beneath shelf. Shelves are fabricated from .090" aluminum for maximum strength.

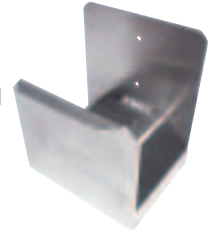
Part No.	Description
PIT330	1 Bay Helmet Shelf, 14-1/2" L. x 12" H. x 15" D.
PIT331	2 Bay Helmet Shelf, 28-1/2" L. x 12" H. x 15" D.



## Hanging Brackets

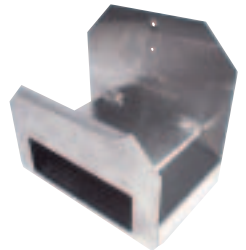
Hanging brackets store all hoses and electrical cords neatly. Gives shop or trailer a professional look.

Part No.	Description
PIT220	Electrical Cord Bracket
PIT221	Air Hose Bracket



## Deluxe Air Bracket PIT223

Great for storing air hose, chuck, air gauge, small tools, etc.



## Tie Down Hangers

Store ratchet tie downs neatly on trailer wall and create more floor space at the same time. Small bracket stores two ratchet tie downs, large bracket can store several. Fabricated from .090" aluminum for durability.

Part No.	Description
PIT217	Single Small Bracket, 8" L. x 3-1/4" D.
PIT218	Single Large Bracket, 18" L. x 3-1/4" D.
PIT222	Two Small Brackets, 8" L. x 3-1/4" D.



## Paper Towel Holder PIT226

Enjoy easy access to paper towels.



## Universal Hanger PIT170

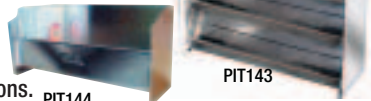
Keep helmet, driving jacket and gear handy. Hanger is 3-1/2" wide x 4" high x 2-1/2" deep.





## Gear Storage Racks

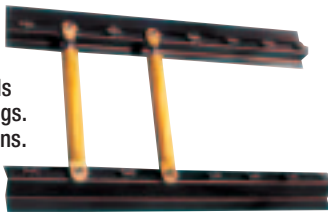
Heavy duty aluminum rack will hold up to twelve quick change gear cases. Available in horizontal and vertical versions. PIT144



Part No.	Description
PIT143.....	Horizontal Gear Storage Rack, 20-1/2" W. x 22" H. x 7" D.
PIT144.....	Vertical Gear Storage Rack, 24" W. x 9-3/4" H. x 7" D.

## 8-Piece Shock Rack PIT136

Two-piece metal shock rack holds eight shocks, with or without springs. Completely powder coated, with pins.



## 12-Piece Shock Rack PIT1037

Rack holds up to 12 shocks. Because the unit mounts closer to the wall, it will not hold shocks with coil over springs.



## Torsion Bar Rack PIT134

The only way to store torsion bars while hauler is in transit. Drilled on 16" centers to line up with trailer wall studs, unique rack can hold up to 12 bars.



## Adjustable Tire Rack PIT295



Unique heavy duty steel rack mounts on 16" centers and adjusts from 18" to 26" for different tire diameters. Quickly unfolds from the wall and adjusts to full length. Removable lock pins allow easy storage.

## Gauge Pouch PIT228

Secures tire gauges up to 4-1/8" dia.



Gauge Not Included

## Nitrogen Bottle Storage Cradle PIT257

Brackets firmly fasten to the studs in trailer walls to keep 9-1/4" dia. nitrogen bottles safe and secure. Holes are drilled on 16" centers to line up with the studs.



## Floor Jack Mounts PIT190

Mounts keep jack secure for the long haul. Drop jack in between angles and position front wheels in semi-circular front shells. The jack will remain in place during sudden stops, starts and tight corners.



## Jack In A Pouch PIT194

Wall mounted pouch keeps pit jack contained during transport, and adds floor space. TIG-welded aluminum, .090" thick pouch is 17-1/2" wide x 24-1/4" high x 5-1/16" deep.

Jack Not Included



## D Cell Flashlight Holder PIT216

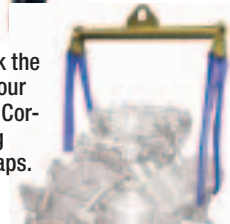
Handy, .090" thick aluminum holder secures any "D" cell flashlight to tool boxes, trailer walls, etc.

Flashlight Not Included



## Engine Sling PIT201

Perform quick engine changes. Simply hook the engine sling to engine puller and attach the four straps to header studs or exhaust bolt holes. Corrosion resistant, plated 28" wide engine sling includes (4) royal blue 22" long polyester straps.



## E-Track PITETH-1

An ideal horizontal attachment point on floors, walls or ceilings. Zinc plated steel E-Track is 5' long.



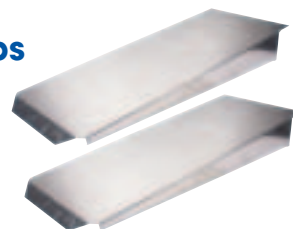
## Track Strap PIT074118

Track strap, is 2" wide x 6" long with a 1,000 lb. rating. Typically used with Pit Pal's E-Track or A-Track to adapt as a tie down hanger or to secure other cargo.



## Dual Extension Ramps

Helpful when loading or unloading low-slung race cars. Ramps are 14" wide, and fabricated from .125" thick aluminum with tig-welded reinforcing ribs, heavy hinges and rivets. Flips up for easy transportation. Sold in pairs.



Part No.	Description
PIT699.....	14" Wide x 36" Long x 4" High Extension Ramps
PIT702.....	14" Wide x 72" Long x 4" High Extension Ramps



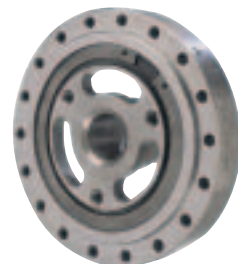
## Harmonic Balancers

Powerbond offers three harmonic balancers: The non-SFI approved Street/Race is an affordable 7,500 RPM balancer with a nodular iron center and a 1045 steel inertia ring to prevent spinning. Timing marks are computer etched. The Race balancer has a 1045 steel center and inertia ring, is SFI-approved and engineered for high-revving engines.

Application	Dia.	Weight	Balance	Street/Race Part No.	Race Part No.
<b>Small Block Chevy</b>					
283-350	6.75"	8.1 lbs.	Internal	PBBPB2221-ST	PBBPB2221-SS
283-307, Lightweight	6.1"	5.5 lbs.	Internal	PBBPB1012-ST	PBBPB1012-SS
283-350	8"	11.2 lbs.	Internal	PBBPB1046-ST	PBBPB1046-SS
283-350, BB Chevy Snout	6.75"	8.1 lbs.	Internal	—	PBBPB1161-SS
400	8"	10.6 lbs.	External	PBBPB1050-ST	PBBPB1050-SS
400, Lightweight	7"	8.1 lbs.	External	—	PBBPB1118-SS
<b>Small Block Ford</b>					
302-351W, 4-Bolt, 28 oz.	6.5"	11.4 lbs.	External	PBBPB1060-ST	PBBPB1060-SS
302 EFI, '82-95, 4-Bolt, 50 oz.	6.4"	10.9 lbs.	External	PBBPB1084-ST	PBBPB1084-SS
302-351W, 4-Bolt, Lightweight	6.37"	8 lbs.	Internal	—	PBBPB1086-SS
302-351W, 3-Bolt, Lightweight	5.9"	5.9 lbs.	Internal	PBBPB1479-ST	PBBPB1479-SS
302-351W, 351C, 4-Bolt, 28 oz.	6.5"	10.9 lbs.	External	PBBPB1082-ST	PBBPB1082-SS



Street/Race



Race

## OEM Style "Claimer" Harmonic Balancers

Ideal for "claimer" racers and engine builders. Totally new balancers are manufactured from high grade SG iron castings, bonded together like original balancers. Each balancer exceeds manufacturer specifications. Recommended for engines up to 6,500 RPM.

Part No.	Description
PBBPB1050-N.....	SB Chevy 400, 8" Dia., External Balance
PBBPB2221-N.....	SB Chevy 350, 7" Dia., Internal Balance
PBBPB1214-N.....	SB Ford 351W, 1990-Up, External Balance, 28 oz., 4-Bolt
PBBPB1084-N.....	SB Ford, 1982-95 EFI, External Balance, 50 oz., 4-Bolt



## Pro Head CC Kits

Kits include everything needed to CC combustion chambers, and intake and exhaust runners. Glass burets are compatible with alcohol, parts washer solvent, or any other suitable fluid and are marked off in .2cc increments for easy reading.

Part No.	Description
POW351140.....	125cc x .2cc
POW351150.....	100cc x .2cc



## Rimac Spring Tester POW360070

The Rimac Bench Top Spring Tester has been the industry standard for over 70 years and is the only sure way to check spring height versus spring pressure. Capably handles valve, transmission, clutch and other springs up to 2" dia. and 4-1/2" free length. Calibrated test spring enables testing and recalibrating in the field. Measures 0-1000 lb. x 5 lb.



## 5/8" Spark Plug Socket POW301150

Special tool eases spark plug installation, even when header tube interference makes installation impossible with traditional sockets. CNC-machined, stainless steel tool will sneak into virtually any cylinder head/exhaust header combination.



## Cartridge Rolls

Resin-bonded sanding rolls will finish port and polish work. Rolls are 3/8" dia. by 1-1/2" long and fit 1/4" mandrels. 50 per package.

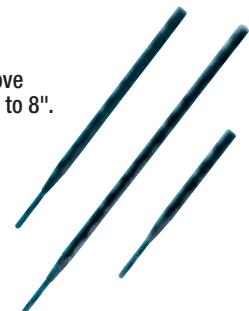
Part No.	Description
POW351476.....	40 Grit
POW351480.....	60 Grit
POW351485.....	80 Grit
POW351490.....	100 Grit
POW351495.....	120 Grit



## Porting Mandrels

Porting mandrels are for use with the above cartridge rolls. Available in lengths from 4" to 8".

Part No.	Description
POW351504.....	4" Long
POW351506.....	6" Long
POW351508.....	8" Long





## Racing Starters

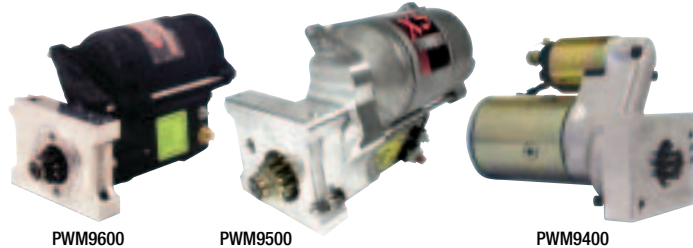
Powermaster offers three Racing Starters. All have 4.4:1 gear reduction ratios and many have the patent-pending Infi-Clock feature to provide maximum header and oil pan clearance with an adapter block and clocking system.

**Master torque** weighs 10.5 lbs. and has 180 ft./lbs. of cranking power for engines with up to 12:1 compression ratios.

**XS Torque** weighs 8.5 lbs. and has 200 ft./lbs. of cranking power for engines with up to 18:1 compression ratios.

**Ultra Torque** weighs 10.5 lbs. with a 2.5KW, 3.4 horsepower motor delivering 250 ft./lbs. of power.

Application	180 Ft. Lbs. Master torque Part No.	200 Ft. Lbs. XS Torque Part No.	250 Ft. Lbs. Ultra Torque Part No.
Chevy, 153-/168-Tooth Flywheel	PWM9600	PWM9500*	PWM9400
Chevy, 153-Tooth Flywheel	—	PWM9502^	—
Chevy, 168-Tooth Flywheel, Staggered Mount	PWM9612	PWM9526	PWM9426
Ford 289-351W, A/T or M/T 5-Speed, 3/4" Offset	—	PWM9503†	PWM9403†
Ford 289-351W, M/T 3- or 4-Speed, 3/8" Offset	—	PWM9504†	PWM9404†
Bert/Brinn Transmission	PWM9614‡	PWM9514^ PWM9529‡	—
Quartermaster Bellhousing	—	PWM9528	—



PWM9600

PWM9500

PWM9400

\* Fits 168-tooth only.

† Starter offset is the distance measured from the starter mounting surface to the engine side of the ring gear.

‡ Adjustable.

^ Not adjustable.

## Chevrolet Mini Starters

Gear reduction Chevrolet Mini Starter has an adjustable mounting block so starter can be rotated, or even inverted with solenoid down, for best oil pan/header clearance. Compatible with kickout oil pans and 153 or 168 tooth flywheels. Choose standard model with 160 ft./lbs. of torque or heavy duty model with 180 ft./lbs. of torque.

Part No.	Description
PWM9000	.....Chevy Standard Duty Mini Starter
PWM9004	.....Chevy Heavy Duty Mini Starter



## Pro Series Alternator Mount Kits Engine Mount Kit PWM8-801

Attaches to either side of engine at water pump to engine block location and may also be installed backwards, driving off the water pump (requires different spacers and belt length). Includes alternator (PWM8162), mounting bracket (PWM801), alternator and water pump pulleys (PWM170), and serpentine belt. Components are also available separately.



## Racing Alternators

Light, compact racing alternators are a true, one wire hookup and offer high output-to-weight ratios. Denso 93mm and Delco CS121 models have low drag, high speed bearings, gold battery posts and proof of performance tags. Choose natural or black, high temperature dispersant finishes. Pulley not included (unless noted).



## Third Member Mount Kits

Drive alternator off of a Quick Change or Ford 9" third member. Kits include alternator (PWM8162), alternator pulley (PWM181) and mounting bracket (PWM410 or PWM400). A pinion yoke pulley (Sweet SWE501-30046) is required. Components are also available separately.



Part No.	Description	Amperage	Finish	Weight
PWM8060	Delco CS121 Alternator	70 Amp	Natural	9.52 lbs.
PWM8062	Delco CS121 Alternator	100 Amp	Black	8.72 lbs.
PWM8162	Denso 93mm Alternator	50 Amp	Black	5.68 lbs.
PWM8166	Denso 93mm Alternator, 16 Volt	50 Amp	Black	5.68 lbs.
PWM8172*	Denso 93mm Alternator	50 Amp	Natural	5.68 lbs.

\* Jumper wire style alternator includes steel pulley.

Part No.	Description
PWM8-400	.....Quick Change Mount Kit, Fits Winters Or Richmond
PWM8-410	.....Ford 9" Quick Change Mount Kit

# POWERTRAX®

## No-Slip Traction System

The Powertrax automatically directs power to provide full engine torque to both rear wheels, even if one has zero traction. Unwanted wheel slip is controlled, and transitions from equal torque distribution to differential action for making turns are quiet and smooth. Installation is easy with step-by-step instructions supplied with each unit, and there is usually no need for any adjustment to the ring and pinion setup.

Part No.	Description
PTX92-0690-2800	.... Ford 9" 28-Spline, 1957-87
PTX92-0690-3100	.... Ford 9" 31-Spline, 1957-87
PTX92-0785-2805	.... GM 10 Bolt 8.5" 28-Spline, 1970-96
PTX92-0785-3005	.... GM 10 Bolt 8.5" 30-Spline, 1970-96

**Note:** Powertrax units listed above are designed to install into "open" type differentials only. They are not designed to replace a locker or positraction unit.





The Power Tank is an indispensable inflation system for quickly airing up flat tires and fixing blown tire beads. It is also an instant air source for running pneumatic tools like impact wrenches, nail guns and drills. Utilizing pressurized liquid CO2, which is released as a vapor through a proprietary regulator designed for super high flow rates without "freeze clogging" which is the number one problem with other high CO2 pressure regulators. CO2 vapor is inert (non-toxic, non-corrosive) and is perfectly safe for tires, wheels and tools.

### 10 lb. Package "A" System

Fast and portable, system will air up to sixteen 35" tires to 20 PSI. It's clean and simple and includes CO2 aluminum tank, SuperFlow HPX regulator and cover, 25' HP1000 braided hose, Power Grip Guard, Super Bracket and tank boot. Choose black or yellow air tanks.

Part No.	Description
PWTPT10-5240BK....	10 lb. Package "A" System, Black Tank
PWTPT10-5240YL....	10 lb. Package "A" System, Yellow Tank



### Pro Series Tire Repair Kit PWTKIT-8132

Every racer should have a good tire repair kit in the toolbox. The Pro Series Tire Repair Kit fills the bill. The needle and reamer will not bend and have magnesium handles for lightweight strength. Thirty of the more desirable black, self-vulcanizing plugs, two large patches for areas that won't hold a plug, 24" of stainless steel wire for major sidewall cuts, a jar of rubber lube to ease the repair jobs, two plug cutter knives and Allen wrenches for the tools are all packed in a durable, high impact plastic case.



### Pocket Gauge PREDT105

Slim, pocket sized gauge reads 0-100 PSI and is accurate within +/-1.0%.



### Competition Gauge

#### PREDT160-10

Pressure, Inc.'s top-of-the-line tire gauge. Large display gauge reads 0-50 PSI and is accurate within +/-0.5%. Includes hard case.



### Professional Gauge PREDT150-34CV

Gauge reads 0-100 PSI and includes an air bleed button. Accurate within +/-1.0%.



### Digital Electronic Compression Tester

#### PREDC160-05CV

Large, digital display compression tester provides accurate readings in 1 lb. increments. Includes hold and reset features, 18" flex hose and is adaptable to 14mm, 14mm long and 18mm spark plug holes.



**Ground Shipment Only**  
On All Pro-Blend Products

### Hot Lap 101 PRB4000

Especially formulated to soften tires and create bite. Hot Lap 101 works on asphalt and dirt tires and can help natural and synthetic rubber tires resist blistering, run 10-15 degrees cooler, yet still stick to the track surface and is detectable. One gallon can.



### Hot Lap Victory Lane

#### PRB5000

#### Super Quick Up To 50 Laps

Similar to Hot Lap II but lasts longer and is detectable. Use on asphalt or dirt. One gallon can.





### Hot Lap II PRB6000TS Super Quick For 25 Laps

Works on asphalt or dirt. Tires run 18-22° cooler and last up to 50% longer. Hot Lap II is designed for races with 25 laps or less. Extends tire life and is undetectable. One gallon can.



### Hot Lap 3 PRB3030

Reduce lap times by as much as five tenths of a second by putting one ounce per inch of tread width of Hot Lap 3 inside the tire. Cold roll for the times specified for a particular type of track surface and let stand for 48 hours before a race. Product is "Sniffer-Proof" and will definitely cause a drop in the durometer reading. 32 oz. can.



### Hot Lap Pro Bite PRB8000Q **NEW!**

Intended for use at the track, Hot Lap Pro Bite dramatically increases tire grip. During the week, treat the tires with Hop Lap II; after arriving at the track, wipe the tires with 2-3 coats of Pro Bite. Proceed to make practice laps and determine if more product is needed to get the desired grip. Works best on dry, slick tracks. Sold in 32 oz. can.



### Quik Lap PRB7032LMT Last Minute Treatment

Apply to tires the day of the race. Reduces lap time 1-3 tenths and maintains durometer for the first 25 laps. Use on asphalt or dirt. Undetectable. 30 oz. can.



### Tire Cleaner PRB7050 Racing Tire Cleaner

Removes the glaze on slicker tires and opens the pores to ready tire for Hot Lap treatment. 30 oz. can.



### 40 Below PRB4032 Stops Overheating

Reduces water temperature up to 40°F. Keeps temperature under control while drafting, racing, sitting in the pits, in traffic, cruising, towing, climbing, or running with restricted air flow. 32 oz. can.



**Ground Shipment Only**  
On All Pro-Blend Products

### Fast Forward PRB1616 Increases Horsepower

Produces a startling increase in mid-range torque and can be used with gas or alcohol. Use on circle track, drag racing, street, towing, bikes, watercraft and other high performance applications. 16 oz. can.



### CTX-2 PRB1650 Undetectable Fuel Additive

Add up to 40 horsepower. Add 1 gallon of CTX-2 to 4 gallons of gas. One gallon can.



### Alcohol Fuel Lube PRB8400 Lubricates Entire Fuel System

Blends with alcohol or nitromethane to lubricate the entire fuel system. Add 16 oz. to 50 gallons. 16 oz. can.



### Engine Racing Concentrate PRB1600 A Must For All Performance Engines

Cools oil up to 52° and eliminates oil starvation, bearing failure, piston scuffing, galling, blueing, metal transfer, valve train drag and foaming. Also helps control condensation in gasoline or alcohol engines. 16 oz. can.



### Racing Oil Stabilizer PRB8062

Specialized oil additive eliminates dry starts, cools oil temperatures up to 38°, reduces friction and dramatically reduces internal wear. May also be used to cool manual transmissions and differentials. 28 oz. bottle.



### Pro-Tuff Gear Lube PRB8398 Eliminates Ring And Pinion Failure

Reduces gear lube temperature up to 60°. Triples gear life in transmissions, rear ends and transaxles and stops bluing and galling. Absorbs shock and loading. 16 oz. can.



Jerry Drake