



Race Car Covers

Top quality covers are made of extra durable 200 denier polyester. Covers include soft cotton liners for superior body protection, while built-in reinforcements over spoilers and edges prevent tearing. Offered in black only.

Part No.	Description
RCA82001B.....	Asphalt Late Model Cover
RCA82002BK3.....	Dirt Late Model Cover
RCA82003BK3.....	Super Truck Cover
RCA82004N.....	IMCA/UMP Modified Cover, New Style
RCA82007.....	NASCAR Asphalt Modified Cover



RCA82001B

Rear Race Car Covers **NEW!**

Typically used when it is desirable to conceal tires and suspension components from the competition. Rear Race Car Covers include durable, 200 denier polyester construction with soft cotton liners. Offered in black only.

Part No.	Description
RCA82002-R-BK3.....	Dirt Late Model Rear Car Cover
RCA83005-R-BK3.....	Modified Rear Car Cover



RCA82002-R-BK3



Trailer Ramps

Lightweight and durable, specially designed Trailer Ramps allow low loading low slung race cars into trailers without the worry of damaging noses, oil pans, headers, etc. Simply place the trailer door on the notch of the ramps, which decrease the angle of approach by as little as 4° and load car. Sold in pairs.

Part No.	Description
RMPRR-TR-4.....	Trailer Ramps, 46" Long x 4" High x 14" Wide, 5.5° Incline
RMPRR-TR-5.....	Trailer Ramps, 67" Long x 5" High x 14" Wide, 4° Incline
RMPRR-TR-6.....	Trailer Ramps, 45" Long x 6" High x 14" Wide, 7.8° Incline
RMPRR-TR-7.....	Trailer Ramps, 74" Long x 7" High x 14" Wide, 5.2° Incline
RMPRR-TR-8.....	Trailer Ramps, 54.75" Long x 8" High x 16" Wide, 8.4° Incline



Trailer-Mates

Eases tie down of low ground clearance race cars to trailer by adding 3" of ground clearance. Typically used to allow car door to be opened when trailer wheel well clearance is desired. Sold in pairs, Trailer-Mates have a 10.79° incline.

Part No.	Description
RMPRR-TM-FRT.....	Front, 36" Long x 3" High x 14" Wide
RMPRR-TM-REAR.....	Rear, 32.75" Long x 3" High x 14" Wide



Scale Ramps **NEW!**

Ramps rise 2-1/2" to work with virtually all racing scales. One solid piece offers strength and stability, and the small, 7.8° incline allows the vehicle to be easily rolled up or down. Ramps are offered with or without flat platform area.

Part No.	Description
RMPRR-SCALE.....	14" L. x 2.5" H. x 12" W. (No Platform), Qty. 4
RMPRR-SCALE-2.....	30.1" L. x 2.5" H. x 12" W. (12.5" Long Platform), Qty. 2



Trak-Jax

Trak-Jax get low slung cars high enough to fit a standard floor jack under the car. Sold in pairs, Trak-Jax are 30.1" long x 3" high x 12" wide. Weigh just 5 lbs. each.

Part No.	Description
RMPRR-TJ.....	Trak-Jax
RMPRR-TJ-S.....	Trak-Jax, With 1.5" Stop



Full Face Helmet

All-new full face helmet combines the benefits of superior visibility, improved safety and exceptional comfort. Helmet is constructed using a lightweight composite shell that is fitted with a EPS liner, fire-resistant Nomex interior, Kevlar chin strap, tear-off posts and a polycarbonate low fog shield. Pre-drilled for head and neck restraint anchors. Meets SA-2010 specifications. Offered in white, gloss black or flat black.



Size	White	Gloss Black	Flat Black
X-Small	RQP284111	-	-
Small	RQP284112	RQP284002	-
Medium	RQP284113	RQP284003	RQP284993
Large	RQP284115	RQP284005	RQP284995
X-Large	RQP284116	RQP284006	RQP284996
XX-Large	RQP284117	RQP284007	-
XXX-Large	RQP284118	-	-



Jay Niewiek

Photo By: Steve Datema

Open Face Helmet

Based on an all new design, open face helmet features a wide eye port for improved peripheral vision without sacrificing safety. Helmet incorporates a lightweight composite shell, EPS liner, fire-resistant Nomex interior and Kevlar chin strap. Meets SA-2010 specifications. Offered in white only.

Part No.	Size
RQP252112.....	Small
RQP252113.....	Medium
RQP252115.....	Large
RQP252116.....	X-Large
RQP252117.....	XX-Large





Youth Full Face Helmets

Designed for the growing youth, full face helmet includes small, medium and large cheekpads. Helmet features a comfortable, fire-resistant Nomex liner, EPS liner, lightweight composite shell, Kevlar chin strap and tear-off posts. Meets SFI 24.1 specifications. Sold complete with polycarbonate, low fog shield. Offered in white, gloss black or flat black.



White	Gloss Black	Flat Black
RQP239119	RQP239009	RQP239999

Replacement Helmet Shields



Description	Clear	Dark Smoke	Amber
SA-2005 Full Face Ridgeline	RQP202001	RQP202004	RQP202006
SA-2010 Full Face	RQP204001	RQP204004	RQP204006

Shield Hardware Kit RQP204111

Shield hardware kits include aluminum pivot screws and washers, visor washers and visor ratchet for Racequip SA-2010 full face helmets.



Heavy Duty Helmet Bag RQP300003

Oversize helmet bag protects helmet and helps keep face shield free from scratches. Bag has a soft fleece interior, black nylon exterior and webbed nylon handles for eased carrying.



Helmet Sizing Chart

Helmet Size	Inches	Centimeters	Hat Size
2X-Small	20 to 20-1/2	51 to 52	6-3/8 to 6-1/2
X-Small	20-3/4 to 21-1/4	53 to 54	6-5/8 to 6-3/4
Small	21-1/2 to 22-1/8	55 to 56	6-7/8 to 7
Medium	22-3/8 to 22-7/8	57 to 58	7-1/8 to 7-1/4
Large	23-1/8 to 23-3/4	59 to 60	7-3/8 to 7-1/2
X-Large	24 to 24-1/2	61 to 62	7-3/4 to 7-5/8
2X-Large	24-3/4 to 25-1/4	63 to 64	7-7/8 to 8



Scott Payton

Photo By: John Berglund

360° Helmet Supports



Full round, 360° helmet support is made from flame retardant, high density foam and covered with woven FRC. Support is 2" thick, and includes a tapered wedge design. Meets SFI 3.3 specifications.

Description	Black	Red	Blue
360° Helmet Support	RQP337007	RQP337017	RQP337027

Non-SFI 360° Helmet Supports



Non-SFI certified support is made of flame retardant, high density foam with a woven FRC cover and Velcro closure.

Description	Black	Red	Blue
360° Helmet Support	RQP333003	RQP333013	RQP333023

Junior 360° Helmet Support

RQP3370097 *NEW!*

Perfect for the drivers of Quarter Midgets, junior-sized helmet support is SFI-approved and features a full, 360° design. Made from flame retardant, high density foam and covered with woven FRC cover and Velcro enclosure. Black only.



Arm Restraints RQP391002

Designed for open cockpit race cars, arm restraints are manufactured from premium polypropylene webbing and high grade steel hardware. Adjustable from 7"-15". Sold in pairs. Black only.



5-Point Latch And Link Harness Assembly

Harness assembly is made with premium 3" wide nylon webbing and is fitted with drop-forged steel hardware. Assembly includes two individual shoulder belts, pull down lap belt and 2" wide submarine belt. Double adjustable harness utilizes wrap-around or bolt-in mounting. Meets SFI 16.1 specifications.



Description	Black	Red	Blue
Latch And Link Harness	RQP711001	RQP711011	RQP711021
Latch And Link Harness, 2" Shoulder	RQP717007*	-	-

* Harness has 2" shoulder harness to accommodate HNR/HANS Device.

Harness Pads RQP767001

Designed to add comfort when using 3" wide belts, harness pads are made from flame retardant foam padding that includes a Pyrovatex FRC cover with hook and loop closure. Sold in pairs. Black only.





110 Series Single-Layer Racing Suits

Stylish Pyrovatex FRC suits have contrasting arm and leg stripes. Suits are designed to wick moisture away from the skin. Black epaulets, black cuffs, two-piece belt and high back collar add a professional appearance. Offered in one- or two-piece (jacket and pants) versions, suits meet SFI 3.2A/1 specifications.



Size	Black	Red	Blue
One-Piece Driving Suits			
Small	RQP110002	RQP110012	RQP110022
Medium	RQP110003	RQP110013	RQP110023
Medium/Tall	RQP110004	RQP110014	RQP110024
Large	RQP110005	RQP110015	RQP110025
X-Large	RQP110006	RQP110016	RQP110026
XX-Large	RQP110007	RQP110017	RQP110027
XXX-Large	RQP110008	RQP110018	-
Two-Piece Driving Suits			
Jackets			
Small	RQP111002	RQP111012	RQP111022
Medium	RQP111003	RQP111013	RQP111023
Medium/Tall	RQP111004	-	-
Large	RQP111005	RQP111015	RQP111025
X-Large	RQP111006	RQP111016	RQP111026
XX-Large	RQP111007	RQP111017	RQP111027
XXX-Large	RQP111008	RQP111018	RQP111028
Pants			
Small	RQP112002	RQP112012	RQP112022
Medium	RQP112003	RQP112013	RQP112023
Medium/Tall	RQP112004	-	-
Large	RQP112005	RQP112015	RQP112025
X-Large	RQP112006	RQP112016	RQP112026
XX-Large	RQP112007	RQP112017	RQP112027
XXX-Large	RQP112008	RQP112018	-

120 Series Multi-Layer Racing Suits

Pyrovatex outer liner and combination Nomex and FRC inner liner offer exceptional fire protection, and maintain superior comfort. Suits feature black epaulets, wrist and ankle cuffs, two-piece belt, high back collar, boot cuff pants, and contrasting arm and leg stripes. Available in one- or two-piece designs, suits meet stringent SFI 3.2A/5 specifications.



Size	Black	Red	Blue
One-Piece Driving Suits			
Small	RQP120002	RQP120012	-
Medium	RQP120003	RQP120013	RQP120023
Medium/Tall	RQP120004	RQP120014	RQP120024
Large	RQP120005	RQP120015	RQP120025
X-Large	RQP120006	RQP120016	RQP120026
XX-Large	RQP120007	RQP120017	-
XXX-Large	RQP120008	-	-
Two-Piece Driving Suits			
Jackets			
Small	RQP121002	-	RQP121022
Medium	RQP121003	RQP121013	RQP121023
Medium/Tall	RQP121004	-	-
Large	RQP121005	RQP121015	RQP121025
X-Large	RQP121006	RQP121016	RQP121026
XX-Large	RQP121007	RQP121017	RQP121027
XXX-Large	RQP121008	RQP121018	RQP121028
Pants			
Small	RQP122002	-	RQP122022
Medium	RQP122003	RQP122013	RQP122023
Medium/Tall	RQP122004	-	-
Large	RQP122005	RQP122015	RQP122025
X-Large	RQP122006	RQP122016	RQP122026
XX-Large	RQP122007	RQP122017	RQP122027
XXX-Large	RQP122008	RQP122018	RQP122028

Suit Sizing Chart

	Small	Medium	Medium Tall	Large	X-Large	2X-Large	3X-Large
Height	5'6" - 5'8"	5'8" - 5'10"	5'10" - 6'	5'10" - 6'	6' - 6'2"	6'2" - 6'4"	6'4" - 6'6"
Weight	125-140	140-165	150-175	165-195	200-225	225-250	250+
Waist	30-32"	34-36"	34-36"	36-38"	40-42"	44-46"	48-52"
Chest	34-36"	38-40"	38-40"	42-44"	46-48"	50-52"	54-56"
Inseam	28"	29"	30"	31"	32"	33"	33"
Shoulders	17"	18"	18"	19"	20"	21"	23"
Sleeve	31-32"	33-34"	33-34"	34-35"	36"	37"	38"
Neck	14"	14.5"	14.5"	15.16"	16"	17-18"	18"

Waist: At natural waist at navel (not hips where your jeans ride)

Chest: Circumference at the widest part

Inseam: Crotch seam to ankle bone

Shoulder to Shoulder: Shirt shoulder seam to shirt shoulder seam

Sleeve: Back base of neck to wrist elbow bent



Scott Baker

Pro-1 Youth Single-Layer Suits **NEW!**

Well suited to the young drivers of quarter midgets or go-karts, the Pro-1 suit includes single-layer, Pyrovatex FRC construction to meet stringent SFI 3.2A/1 specifications. Suits feature high back collar, wrist and ankle cuffs, internal bag pockets and a pleated back panel for added flexibility. Fresh, stylish black suits include red epaulets, red high back collar and contrasting red arm and leg stripes.

Part No. **Size**
 RQP1950090XX-Small
 RQP1950091X-Small
 RQP1950092Small
 RQP1950093Medium
 RQP1950095Large
 RQP1950096X-Large
 RQP1950097XX-Large



Youth Suit Sizing Chart

	XX-Small	X-Small	Small	Medium	Large	X-Large	XX-Large
Height	45"	45"-47"	48"-55"	50"-57"	55"-60"	57"-62"	60"-66"
Weight	48 lbs.	45-55 lbs.	55-70 lbs.	60-75 lbs.	70-85 lbs.	75-99 lbs.	85-110 lbs.
Size	5	6/7	8/10	10/12	12/14	14/16	16/18



Mod Gloves

Soft and supple, long gauntlet Mod gloves have two layers of soft knit Nomex joined with a full leather palm. Mitered fingers offer unmatched comfort and feel. Adjustment straps allow separate wrist and palm tensioning. Gloves meet SFI 3.3/5 specifications.

Part No.	Size
RQP312002.....	Small
RQP312003.....	Medium
RQP312005.....	Large
RQP312006.....	X-Large



355 Gloves

Double-layer, Nomex knit gloves deliver comfort and safety. Gloves feature a high grip black suede leather reinforced palm. The hook and loop adjuster strap ensures a proper fit. Meets SFI 3.3/5 specifications.



Size	Black	Red	Blue
Youth Small	RQP3550092	-	-
Youth Medium	RQP3550093	-	-
Youth Large	RQP3550095	-	-
X-Small	RQP355001	-	-
Small	RQP355002	RQP355012	RQP355022
Medium	RQP355003	RQP355013	RQP355023
Large	RQP355005	RQP355015	RQP355025
X-Large	RQP355006	RQP355016	RQP355026
XX-Large	RQP355007	-	-
XXX-Large	RQP355008	-	-

351 Gloves

Single-layer 351 gloves are soft, supple and comfortable with Nomex knit and grey suede leather reinforced palms. Standard length, gauntlet style gloves have hook and loop closures to ensure proper fit. Gloves meet SFI 3.3/1 specifications.



Size	Black	Red	Blue
Small	RQP351002	RQP351012	RQP351022
Medium	RQP351003	RQP351013	RQP351023
Large	RQP351005	RQP351015	RQP351025
X-Large	RQP351006	RQP351016	RQP351026

350 Gloves

Single-layer, non-SFI certified gloves have Nomex knit backs and white leather palms.

Part No.	Size
RQP350002.....	Small
RQP350003.....	Medium
RQP350005.....	Large
RQP350006.....	X-Large



Euro Ankletop Racing Shoes

Lightweight, flexible shoes have an advanced, European design with suede leather uppers and Pyrovatex flame retardant liners. Carbon-L wear pads provide added durability and toe protection. Ankletop shoes also feature contrasting stitching, padded ankles, double-stitched seams and reinforced lace areas. Shoes meet SFI 3.3/5 specifications.

Part No.	Size
RQP30500010	1
RQP30500020	2
RQP30500030	3
RQP30500040	4
RQP30500050	5
RQP30500060	6
RQP30500065	6-1/2
RQP30500070	7
RQP30500075	7-1/2
RQP30500080	8
RQP30500085	8-1/2
RQP30500090	9
RQP30500095	9-1/2
RQP30500100	10
RQP30500105	10-1/2
RQP30500110	11
RQP30500115	11-1/2
RQP30500120	12
RQP30500125	12-1/2
RQP30500130	13
RQP30500140	14
RQP30500150	15
RQP30500160	16
RQP30500180	18
RQP30500200	20



303 Mid-Top Racing Shoes

Mid-top racing shoes offer a suede leather outer layer and a flame retardant, Pyrovatex liner with padded ankles. Durable, comfortable shoes include reinforced lace areas, double-stitched seams and molded rubber soles. Meet SFI 3.3/5 specifications.

Part No.	Size
RQP30300080	8
RQP30300090	9
RQP30300100	10
RQP30300110	11
RQP30300120	12
RQP30300130	13



Matt Cosner



Chuck Clise



Victory GT-18 Race Communications System *RCEGT-18*

Suited to the short track or super speedway, the Victory GT-18 two-man system has 16 programmable channels and four watts of power.

For The Car:

- Victory GT-18 16-Channel VHF Radio
- Victory GT-18 Rapid Charger
- RE4308 Legacy Harness
- RE503 Legacy PT Switch
- RE511-U Roof Mount Car Antenna
- A-ADP-K Antenna Adapter
- RB-3 Radio Mounting Box

For The Crew Chief:

- Victory GT-18 16-Channel VHF Radio
- Victory GT-18 Rapid Charger
- RE005 Legacy Headset
- RE3708-FT Radio Headset Cable
- RaceBELT PRO

For The Driver:

- RE1 Foam Earmolds
- RE705 Legacy Flex Boom Helmet Kit



Motorola Piranha Race Communications System *RCERE200*

Top-of-the-line system for crew chief and driver is for 3/4 mile and larger tracks.

For The Car:

- Motorola CP200 Radio
- RE703 Legacy PTT Switch
- RE4302 Legacy Wiring Harness
- RT511-U Roof Mount Antenna
- Antenna Adapter
- RB-3 Radio Mounting Kit

For The Crew Chief:

- Motorola CP200 Radio
- RE005 Legacy Headset
- RE3736 Radio Interface Cable
- Radio Carry Case
- RaceBELT
- 90 Minute Charger

For The Driver:

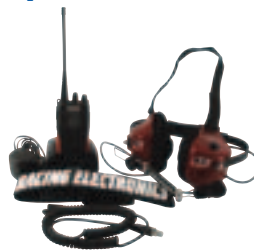
- RE705 Legacy Flex Boom Helmet Kit
- RE1 Foam Earmolds
- V93 Equipment Case



Victory GT-18 Additional Crew Race Communications Systems *RCEGT-181*

Accommodate another crew member on the Victory GT-18 system.

- Victory GT-18 16-Channel VHF Radio
- Victory GT-18 Rapid Charger
- RE005 Legacy Headset
- RE3708-FT Radio Headset Cable
- RaceBELT PRO



Motorola Piranha Additional Crew Race Communications System *RCERE201*

Accommodate another crew member on the Piranha system.

For The Crew:

- Motorola CP200 Radio
- RE005 Legacy Headset
- RE3736 Radio Interface Cable
- Radio Carry Case
- RaceBELT



Motorola Stingray Race Communications System *RCERE840*

Two-man system for the crew chief and driver works up to 3/4 mile.

For The Car:

- Motorola BPR40 Radio
- RE503 Legacy PTT Switch
- RE4302 Legacy Wiring Harness
- RB-3 Radio Mounting Kit

For The Crew Chief:

- Motorola BPR40 Radio
- RE005 Legacy Headset
- RE3736 Radio Interface Cable
- RaceBELT
- 90 Minute Charger

For The Driver:

- RE705 Legacy Flex Boom Helmet Kit
- RE1 Foam Earmolds
- UTOTE Equipment Bag



Race Communications System Accessories And Replacement Components

Part No.	Description
RCE10370	Headset Strap, Replacement For Behind-The-Head Headset
RCE22658	Cloth Ear Covers, Fits Over Foam or Gel-Filled Earseals
RCEDCMC1	Mic (Microphone) Muff, Large
RCEDCMC2	Mic (Microphone) Muff, Small
RCEHH1	Headset Holder, Secures Headset With Belt Clip When Not In Use
RCENNTN4851	Replacement Battery, 1800 mAH 7.5V, CP150/CP200
RCERBELT-PRO	RaceBELT, Nylon Belt With Buckle Secures Radio, Headset And Accessories
RCERE1	Earmolds, Foam Race Molded With Case
RCERE2	Semi Custom Earmolds, Shaped To Fit Into Ear Canal
RCERE4302	Legacy Car Harness, CP150/CP200
RCERE503	Legacy Push-To-Talk Switch, Velcro Mount
RCERE511U	Car Antenna, Roof Mount, Economy Model
RCERE703	Platinum Push-To-Talk Switch, Velcro Mount
RCERT006	Platinum Racer Headset, Most Popular Headset, Requires Radio Interface Cable
RCERT705	Standard Flex Boom Helmet Kit
RCERT3736	Motorola Twin Pin Headset Cable, CP150/CP200
RCERT3800	Inline Push-To-Talk Switch
RCEV93	Metal Carrying Case, 18" x 13" x 7", Stores Radio Equipment
RCEWPLN4138	90 Minute Rapid Charger, CP150/CP200

Motorola Stingray Additional Crew Race Communications System *RCERE841*

Accommodate another crew member on the Stingray system.

- Motorola CP150 Radio
- RE005 Legacy Headset
- RE3736 Radio Interface Cable
- RaceBELT





Tear-Offs

Revolutionary tear-offs are laminated together for installation as one piece for high visibility, low reflection, and elimination of fog in between layers. Speedstack Tear-Offs consist of ten (clear) layers. The SmokeStack consists of three gray (smoke) layers and four clear layers for daytime or late afternoon sessions. The AmberStack consists of one amber layer (yellow) and six clear layers for glare reduction under track lighting. SpeedStack are sold in sleeves which contain three laminated tear-offs (30 tear-offs). SmokeStack and AmberStack Tear-Offs are sold in sleeves which contain four laminated tear-offs (28 tear-offs).



Application	Post Center	Shape	SpeedStack Part No.	SmokeStack Part No.	AmberStack Part No.
Simpson Voyager, HJC, Side Pro, Elite	11-1/2"	Straight	ROP10201C	—	ROP7203A
Bell, G-Force, Pyrotec	12-3/8"	Banana	ROP10205C	—	—
Simpson Matrix, SX, Jr. Shark, HJC Auto	11-1/2"	Banana	ROP10203C	ROP7203S	ROP7203A
Simpson RX, Super Bandit, Diamondback, Raider	11-1/2"	Nose Notch	ROP10204C	—	—
Bell GTX.2, GP2, Star GP, Star Infusion	12-3/8"	Banana	ROP10208C	—	—
Impact Air Draft, Super Sport, Spider, Stingray, Wizard, Euro Sport, Shark, Vudo, Invader, Valor, Devil Ray	12-3/4"	Banana	ROP10209C	ROP7209S	ROP7209A
Impact Vapor, Air Vapor, Charger, Super Charger, Draft	11-3/4"	Banana	ROP10230C	—	—
Impact Champ, Nitro, Super Cyclone	11-1/2"	Nose Notch	ROP10231C	ROP7231S	—

Shield Protector

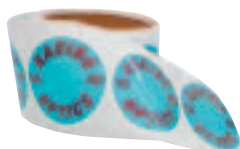
PerimeterSeel™ Shield Protector extends the life of expensive helmet shields. Adheres to helmet visor under laminated tearoffs, sealing out dirt, dust, moisture and preventing fogging and scratches. Offered in clear, smoke and amber.

Part No. Description
 ROP3421CP3.....ClearStack7 Shield Protector, Includes 3 Clear Laminated Layers, Each 4 Mil Thick, (3) Stacks Per Sleeve, Universal Narrow
 ROP7221SP3.....SmokeStack7 Shield Protector, Turns Clear Visor To Smoke, Includes 7 Laminated Layers, (3) Stacks Layers Per Sleeve



Speed Tabs ROP8202

Round vinyl stickers prevent shredding and ease removal of tear-offs. Sold in rolls of 100.



Helmet Post Kit ROP9900

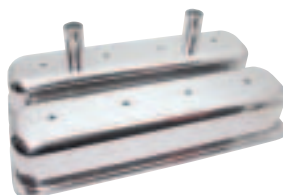
Anodized, CNC-machined mounting posts include smooth edges to provide snag free and tearless removal of tearoff layer.



Circle Track Racing Tall Valve Covers

Offered for small block Chevy, left (driver) side tall covers have breather tubes and baffles; right side tall covers are plain. Early style covers are raw, unplated steel; late, centerbolt style are polished aluminum. Both accept clamp-on breathers. Breathers must be purchased separately.

Part No. Description
 RPCR7215RAW .SB Chevy 1958-86 Unplated Steel Valve Covers, 1-1/2" O.D. Holes
 RPCR6150SB Chevy 1987-97 Polished Aluminum Valve Covers, 1-1/2" O.D. Holes



Polished Aluminum Crankshaft And Water Pump Pulleys

Small block Chevy, short water pump and crankshaft pulleys are made of aluminum billet and available with single or double grooves.



Description	Single Groove Part No.	Double Groove Part No.
SB Chevy Crankshaft Pulley, S.W.P., 6.60" Dia.	RPCR9480	RPCR9481
SB Chevy Water Pump Pulley, S.W.P., 6.60" Dia.	RPCR9478	RPCR9479

Polished Aluminum Valve Covers

Covers are available in tall or short versions and are baffled. Grommets (#RPCR 4996) to accept push-in crankcase breathers are available separately.



Description	Tall Part No.	Short Part No.
SB Chevy		
1958-86 Valve Covers, No Holes	RPCR6030-1	—
1958-86 Valve Covers, (1) Hole	RPCR6130-2	RPCR6131-2
1987-97 Valve Covers, No Holes	RPCR6046	RPCR6036
1987-97 Valve Covers, (1) Hole	RPCR6146-1	RPCR6136-1
SB Ford		
1962-85 Valve Covers, No Holes	RPCR6170	—

Chevy Aluminum Water Necks

Lightweight aluminum water necks feature an O-ring seal. Choose from straight, 45° and 90° versions. Fits all Chevy V-8's.



Description	Straight Part No.	45° Part No.	90° Part No.
Chevy Water Neck	RPCR6002	RPCR6003	RPCR6009

Carb Mount Throttle Return Kit RPCR2083

Chrome plated steel kit attaches directly to popular Holley 2300 2BBL or 4150/4160 4BBL carburetors. Includes light and heavy spring sets, and necessary hardware.





90 Series 6-1/4" "Assault Weapon" Clutches

Ram "Assault Weapon" button style clutches are among the lightest and most affordable metallic clutches available. Each utilizes a billet machined steel button flywheel and open design to eliminate heat and dirt build up inside the unit. The patented Rametallic friction discs stand up to occasional slippage that often puts multi-disc clutches out of commission, and the absence of internal splines eliminates the possibility of floater plate hang up. Button units are for use with a flexplate. Throw-out bearing must be purchased separately.



Part No. **Description**

Clutches

RAM9351S.....Chevy (Early Pre-1986) 1-1/8", 10-Spline, 3-Disc
 RAM9353S.....Chevy (Early Pre-1986) 1-5/32", 26-Spline, 3-Disc
 RAM9371S.....Chevy (Late 1986-Up) 1-1/8", 10-Spline, 3-Disc
 RAM9651S.....Chevy (Early Pre-1986) 1-1/8", 10-Spline, 2-Disc

Release Bearings

RAM495.....Release Bearing, GM 3-Disc Clutch
 RAM497.....Release Bearing, Ford Multi-Disc Clutch

Replacement Components

RAM9901.....Floater Plate
 RAM9902.....Pressure Ring
 RAM9903.....Cover Plate, Gold
 RAM9951-2.....2-Disc Pack, 1-1/8", 10-Spline
 RAM9951-3.....3-Disc Pack, 1-1/8", 10-Spline
 RAM9953-3.....3-Disc Pack, 1-5/32", 26-Spline



RAM495



RAM9903



Hydraulic Release Bearing

Redesigned bearing installs more easily and is competitively priced. Total travel is .500" and the bearing has a rounded face for use with multi-disc clutches.

Part No. **Description**

RAM78100.....Hydraulic Release Bearing, GM
 RAM78125.....Hydraulic Release Bearing, GM Stock Clutches

Replacement Components

RAM78010.....Replacement Bearing
 RAM78500.....Replacement O-Ring Set
 RAM78510.....Remote Bleeder Kit

Stock Clutch Rule Systems

Ram Clutches for "stock clutch" classes are available in several configurations. The 10.5" diameter is a lightweight unit that utilizes a billet aluminum pressure ring with a thin steel heat shield to provide a durable mating surface for the clutch disc. When used with a 6-point Rametallic disc, the clutch weighs just over 15 lbs. If a full-facing disc is required, the Ram 300 Series Organic Disc will provide great holding power and will add only about 2 lbs. to the overall weight. Ram offers a lightweight, 15 lb. billet steel flywheel for Chevrolet that matches these components. If use of all steel components is required, Ram makes a similar 10.5" diaphragm that uses a steel pressure ring. All street stock components are completely rebuildable by the Ram factory.



Part No.	Description
Pressure Plates	
RAM401	GM Standard Weight Diaphragm Plate, 18.5 Lbs.
RAM801	GM Lightweight Diaphragm Pressure Plate, 13.5 Lbs.
RAM851	GM Steel Lightweight Diaphragm Plate, 11.7 Lbs.
Clutch Discs	
RAM251	GM 10.5" x 1-1/8"-10-Spline Solid Hub Organic Disc, 2 lbs.
RAM259	GM 10.5" x 1-1/8"-26-Spline Solid Hub Organic Disc, 2 lbs.
RAM301M	GM 10.5" x 1-1/8"-10-Spline, Organic Disc Sprung Center
RAM309M	GM 10.5" x 1-1/8"-26 Spline, Organic Disc Sprung Center
RAM1021	GM 10.5" x 1-1/8", 10-Spline, 6-Point Solid Hub Sintered Bronze Disc, 2.5 Lbs.
RAM1029	GM 10.5" x 1-1/8", 26-Spline, 6-Point Solid Hub Sintered Bronze Disc, 2.5 Lbs.
Flywheels	
RAM1510	Chevy Lightweight Steel Flywheel (Early Pre-1986), Internal Balance, 15.5 lbs.
RAM1510-10	Chevy Lightweight Steel Flywheel (Early Pre-1986), Internal Balance, 9.7 Lbs.
RAM1510-12	Chevy Lightweight Steel Flywheel (Early Pre-1986), Internal Balance, 11.7 Lbs.
RAM1512	Chevy Lightweight Steel Flywheel (Late 1986-Up), External Balance, 15.5 lbs.
RAM1512-10	Chevy Lightweight Steel Flywheel (Late 1986-Up), External Balance, 9.7 Lbs.
RAM1512-12	Chevy Lightweight Steel Flywheel (Late 1986-Up), External Balance, 15.3T, 11.7 Lbs.
RAM1514	Chevy Lightweight Steel Flywheel (Late 1986-Up), Internal Balance, 15.5 lbs.
RAM1535	Ford 4 Cyl. 2000/2300 Lightweight Steel Flywheel, 9.5 Lbs. Internal Balance.
RAM2525	Ford SB Aluminum Flywheel, 157T, External Balance, 50 oz./in.
RAM2527	Ford SB Aluminum Flywheel, 157T, External Balance, 28 oz./in.



Caliper Spacers

Rapco offers a variety of aluminum spacers to adapt calipers to various rotor thicknesses. Sold individually.

Part No. **Description**

RAPAU112CS-0.44... 0.440" For Large GM (Howe) Calipers, 1.25" To .810" Rotor.
 RAPAU118CS-0.44... 0.440" For Sierra XL And Wilwood Superlite II Calipers, 1.25" To .810" Rotor When Using Non-Rapco Pads.
 RAPAU118CS-0.70... 0.700" For Sierra XL and Wilwood Superlite II Calipers, 1.25" To .810" Rotor When Using Rapco Pads.



RAPAU112CS-0.44

Heat Shields

Rapco's Heat Shields prevent rotor to caliper heat transfer. Shields are .060" thick and packed four (one axle set) per package.

Part No. **Description**

RAPAU112HSLarge GM (Howe) Calipers
 RAPAU118HSSierra XL And Wilwood Superlite II Calipers



RAPAU118HS

Drilled Rotor Bolt Kit

RAPAU1352

Contains eight 5/16"-18 x 1" rotor bolts, cross-drilled for safety wire installation.



Ratech

Ring and Pinion Installation Kits

400 Series Basic Installation Kit: pinion shims, crush sleeve, pinion seal, cover gasket.

100 Series Installation Kit: pinion shims, carrier shims, crush sleeve, pinion seal, pinion nut, ring gear bolts, cover gaskets.

200 Series Bearing Kit: pinion and carrier bearings

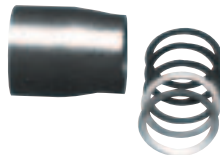
300 Series Complete Kit: includes all components from 100 and 200 Series Kits to perform a complete ring and pinion installation.



Housing	Basic Installation Kit	Installation Kit	Bearing Kit	Complete Kit
GM 7.5" (Year 1981-77)	RAT408K	RAT108K	RAT208B	RAT308K
GM 7.5" (Year 1996-80)	RAT408K	RAT108K	RAT228B	RAT308TK
GM 8.5" 10-Bolt Passenger	RAT410K	RAT110K	RAT204B	RAT310K
GM 12 Bolt Passenger	RAT415K	RAT115K	RAT205B	RAT315K
Ford 9" Open 2.891" Carrier Bearings LM 102949	RAT406K	RAT106K	RAT206B	RAT306K
Ford 9" Open 3.062" Carrier Bearings LM 603049	RAT406K	RAT106K	RAT216B	RAT306K-2
Ford 9" Open 2.891" Carrier Bearings LM 501349	RAT406K	RAT106K	-	RAT306K-3
Ford 9" 3.250" Carrier Bearings LM 104949	RAT406K	RAT106K	-	-

Solid Pinion Bearing Spacers

Reusable spacers replace the stock crush sleeve and eliminate pinion bearing failure. Available with or without shim kits.



Description	Pinion Bearing Spacer Only	Pinion Bearing Spacer And Shim Pack
Ford 8.8" and 9"	RAT4104*	RAT4105
Ford 9", 35-Spline	-	RAT4113
GM 10-Bolt 8.5"	-	RAT4109
GM 10-Bolt 7.5"	-	RAT4111

* Must be machined to length.

Individual Component Parts

Whether it's carrier bearings or just a pinion nut, Ratech components will complete the rear end overhaul.

Housing	Pinion Shims	Carrier Shims	Crush Sleeve	Pinion Seal	Pinion Nut	Ring Gear Bolts	Cover Gasket	Head Bearing	Tail Bearing	Carrier Bearing Set
Ford 9"										
Trac Lock 1957-84	RAT2100	-	RAT3104	RAT6110	RAT1502	RAT1305	RAT5107	See Below	See Below	See Below
Trac Lock 1985-90	RAT2100	-	RAT3104	RAT6105	RAT1502	RAT1305	RAT5102*	See Below	See Below	See Below
Open 1957-84	RAT2100	-	RAT3104	RAT6110	RAT1502	RAT1302	RAT5107	See Below	See Below	See Below
Open 1985-90	RAT2100	-	RAT3104	RAT6105	RAT1502	RAT1302	RAT5102*	See Below	See Below	See Below
2.891" Carrier Bearing LM102949-Common	-	-	-	-	-	-	-	RAT8003	RAT8003	RAT9011
2.891" Carrier Bearing LM501349-Thicker Stack	-	-	-	-	-	-	-	RAT8003	RAT8003	RAT9021
3.062" Carrier Bearing LM603049	-	-	-	-	-	-	-	RAT8003	RAT8003	RAT9012
3.250" Carrier Bearing	-	-	-	-	-	-	-	RAT8003	RAT8003	RAT9010
Daytona Pinion Support	-	-	-	-	-	-	-	RAT7007	RAT8003	-
Daytona Pinion Support W/Pro Gear	-	-	-	-	-	-	-	RAT7016	RAT8003	-
Standard Diameter (28-Spline) Pinion (Pinion Supports Strange/Mark Williams/Moser)	-	-	-	-	-	-	-	RATHM804846 RATHM804810†	RAT2790 RAT2729†	-
Large Diameter (35-Spline) Pinion (Pinion Supports Strange/Mark Williams/Moser)	-	-	-	-	RAT1509	-	-	RATHM804846 RATHM804810†	RAT2788 RAT2729†	-
Ford										
7.5"	RAT1100	RAT1105	RAT3104	RAT6105	RAT1502	-	-	RAT7005	RAT8003	RAT9002
8.8"	RAT1100	-	RAT3104	RAT6105	RAT1502	-	RAT5122	RAT7005	RAT8003	RAT9001
GM										
8.5" Auto 1970-98	RAT1100	RAT1105	RAT3109	RAT6108	RAT1501	RAT1303	RAT5106	RAT7005	RAT8003	RAT9002
7.5" 1977-81, 3.000" Head Bearing	RAT1104	RAT1105	RAT3107	RAT6107	RAT1501	RAT1303	RAT5110	RAT7004	RAT8001	RAT9002
7.5" 1980-98, 3.125" Head Bearing	RAT1104	RAT1105	RAT3107	RAT6107	RAT1501	RAT1303	RAT5110	RAT7009	RAT8001	RAT9002

* O-ring. † Bearing race (cup) part number only.

Smart Sleeve

Innovative new crush sleeve design offers eased installation and improved reliability. During installation, the Smart Sleeve requires only 130-150 ft./lbs. of torque, compared to the 300-400 ft./lbs. required for traditional crush sleeves, and the unique design offers improved cycle duty when compared to solid spacers.

Part No.	Description
RAT11001Ford 9"
RAT11002GM 8.5"
RAT11003GM 7.5" And 8.2"
RAT11004GM 7.5" And Ford 8"
RAT11005GM 8.875" 12-Bolt



Pinion Setting Tool

Quickly install aftermarket gear sets with checking distance marked on the pinion head. Available for GM rear ends.

Part No.	Description
RAT10003GM 7.5"/7.625" 10-Bolt
RAT10004GM 8.5" 10-Bolt
RAT10005GM 8.875" 12-Bolt



Ford 9" Reusable Differential Housing Gasket RAT5107R

Reusable gasket fits all popular Ford 9" housings.



Ford 9" Pinion Pilot Bearing

Pinion pilot bearing fits all Ford 9" rears, installs on pinion.

Part No.	Description
RAT9015Pinion Pilot Bearing
RAT9015-APinion Pilot Bearing Retainer



Quick Change Gaskets RAT5137P

Gaskets are offered in .031" thickness and are sold in packs of ten.





1-Weigh Scales

REB110-1111

Oversize screen presents a full-time display of individual and four wheel weights, total weight and percentages at the touch of a button. Calculates left side, right side, rear and cross. Built-in, rechargeable batteries. Scales include charger, tangle free, color coded cables and 15" x 15" x 2-1/2" aluminum 1,500 lb. capacity pads.



Deluxe Caster/Camber Gauge

REB320-8920

CNC-machined aluminum Gauge has three bubbles for precise readings. Two built-in angles at the end of the unit eliminate radius plates. Gauge is powder coated and includes magnetic adapter.



Nichole Morgillo

Photo By: DMS Photography

Red Devil Brakes, Inc.

ULTRA-LITE BRAKES & COMPONENTS

Late Model Brake Kits

Revolutionary new brake kits featuring race proven, radial mount ULB 270 series calipers for dirt or pavement late models are up to 6 lbs. lighter when compared to traditional racing brake kits. Kits are sold each, complete with four-piston, billet 6061-T6 aluminum caliper, premium brake pads, caliper heat shield, wide 5 billet aluminum hub, gun drilled titanium wheel studs, and choice of scalloped steel or titanium round 1.250" thick x 10.500" dia. rotor.



Left Front Part No.	Right Front Part No.	Left Rear Part No.	Right Rear Part No.
Steel Rotor			
RDB510-1320	RDB510-1330	RDB510-1340	RDB510-1350
Titanium Rotor			
RDB510-1620	RDB510-1630	RDB510-1640	RDB510-1650

Wide 5 Titanium Wheel Stud

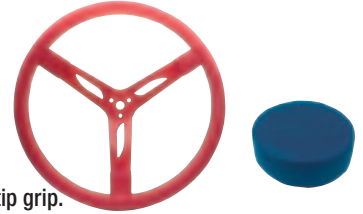
RDB500-2035

Sold each.



Steering Wheels And Nose Pads

Available in a variety of colors and sizes with smooth or fingertip grip.



Description	Black/Bumps	Black/Smooth	Red/Smooth	Blue/Smooth
Steering Wheels				
15" Aluminum	REB270-8685	REB270-8645	REB270-8646	REB270-8647
15" Steel	-	REB270-8665	-	-
17" Aluminum	-	REB270-8655	-	-
17" Steel	-	REB270-8675	-	-
Nose Pad				
Steering Wheel	-	REB270-8635	-	REB270-8637

Heavy Duty Switches

Switches have silver-plated contacts with full 30 amp capacity, weatherproof covers, screw-on terminals and decal.

- Part No. Description**
- REB160-1465..... Toggle Switch With Aircraft Cover, Standard Ignition
 - REB160-1470..... Toggle Switch With Rubber Cover, Standard Ignition
 - REB160-1485..... Starter Button With Rubber Cover



REB160-1485

Rebelite Warning System

Systems watch over the engine, so driver can concentrate on driving. A light, sending unit, T-fitting for back of gauge (if applicable), 6' heat-resistant wire, terminals, instructions and label are included.

- Part No. Description**
- REB140-1280..... Oil Pressure, 20 PSI, Regular Red Light
 - REB140-1305..... Water Temp, 230°, Regular Amber Light



Brake Pads

RDBUL-101

Semi-metallic pads, which are 4.75" long x 2.80" tall x .775" thick, are designed for Wilwood Superlite, Outlaw 3000 and 4000, and Ultra-Lite sprint calipers. Designed specifically for use with Red Devil steel or titanium rotors. Sold each.



RDBUL-237

Fully metallic pads, which are 3.90" long x 2.43" tall x .625" thick, are designed for Wilwood Dynalite Bridge Bolt calipers. Designed specifically for use with Red Devil steel or titanium rotors. Sold each.



Brake Fluid

Non-silicone base fluid incorporates proprietary additives and is designed to withstand extreme temperatures and severe braking conditions. Fluid lubricates and prevents galling, and will not turn black. Rated to 600+° F.

- Part No. Description**
- RDB900-1012 ...12 Oz. Bottle
 - RDB900-1032 ...32 Oz. Bottle





Engine Oils Race Oils

Excellent lubricating properties add 2-4% more power while providing greatly increased high temperature protection. The film strength is among the highest of any petroleum or synthetic product. Rated as a single grade, yet low temperature properties make them exceptional as multi-grades. Oils contain very few detergents and are not recommended for street use. Sold in one quart bottles or a case.

Description	1 Quart Bottle	1 Case (12/1 Qt. Bottles)	1 Case (4/1 Gallon Containers)
5W	RED10004	RED10044	-
10W	RED10104	RED10124	-
20W (5W20)	RED10204	RED10224	-
30W (10W30)	RED10304	RED10324	RED10325
40W (10W40)	RED10404	RED10424	-
50W (15W50)	RED10504	RED10534	-



Motor Oils

The most stable synthetic components give the highest degree of protection and cleanliness with the lowest friction. Red Line Oils provide superior wear protection and friction reduction over a wide temperature range for excellent performance in hot running engines. Sold in one quart bottles or a case.

Description	1 Quart Bottle	1 Case (12/1 Qt. Bottles)
5W-20	RED15204	-
5W-30	RED15304	-
5W-40	RED15404	-
10W-30	RED11304	RED11324
10W-40	RED11404	RED11424
20W-50	RED12504	RED12524
20W-60	RED12604	RED12624



Engine Break-In Additive

Engineered for use with conventional motor oils, specially formulated lubricant incorporates anti-wear additives including zinc and phosphorus (ZDDP) for added protection. Sold in a 16 oz. bottle or a case, additive treats up to 12 quarts of motor oil.

Description	16 Oz. Bottle	1 Case (12/16 Oz. Bottles)
Engine Break-In Additive	RED81403	RED81423



Racing, High-Temp and D4 Automatic Transmission Lubricants

Racing ATF is a synthetic fluid for automatic transmissions that require the positive shift that Type-F fluid provides. High-Temp is a synthetic ATF where Dexron II/Mercon is recommended and is specifically formulated for effective operation at 70°F and above. D4 should be used where Dexron III, Dexron II, Mercon and Mercon V fluids are recommended. 1 qt. container.

Description	1 Quart Bottle	1 Case (12/1 Qt. Bottles)
High-Temp ATF	RED30204	RED30224
Racing ATF	RED30304	RED30324
D4 ATF	RED30504	RED30524



MT-90 And MTL Manual Transmission Lubricant

Use in manual transmissions and transaxles for excellent protection of gears and synchronizers and a superior coefficient of friction. MTL is a 75W-80 GL-4 gear oil that is similar in viscosity to SAE 5W30/10W30 engine oil. MT-90 is a 75W-90 GL-4 gear oil. Sold in 1 qt. containers.

Description	1 Quart Bottle	1 Case (12/1 Qt. Bottles)
MTL 75W-80	RED50204	RED50224
MT-90 75W-90	RED50304	RED50324



ShockProof Gear Oils

Available in heavy, lightweight and super light viscosities. Heavy gear oil resists throw-off and prevents tooth breakage. Ideal for high temperature and extreme pressure in differentials and manual transmissions. Lightweight gear oil is excellent in low temperatures and may also be used to obtain maximum power transfer in racing differentials. Super light oil has the viscosity of automatic transmission fluid. Ideal when maximum power output is required, such as during qualifying. Sold in one quart bottles or a case.

Description	1 Quart Bottle	1 Case (12/1 Qt. Bottles)	5 Gallon Container
Heavy Gear Oil	RED58204	RED58224	RED58206
Lightweight Gear Oil	RED58404	RED58424	-
Super Light Gear Oil	RED58504	RED58524	-



Gear Oils

Formulated for limited slip differentials and manual transaxles. Additional limited slip additives are not required. The 75W-80 is designed for transmissions requiring 80W GL-5 gear oils. The 75W-90 is recommended for street or racing differentials, while 80W-140 is recommended for heavily loaded or low-speed differentials. Sold in 1 quart containers or a case.

Description	1 Quart Bottle	1 Case (12/1 Qt. Bottles)
75W-80	RED50104	RED50124
75W-90	RED57904	RED57924
80W-140	RED58104	RED58124



Liquid Assembly Lube

A convenient version of the same unique additives used in the paste type assembly lube. Product prevents metal-to-metal contact and wear, while offering three times the film strength of conventional molybdenum disulfide greases. Superior rust and corrosion inhibitor allow product to be used for long term storage of components. Not for use on exhaust bolts or fasteners associated with excessively high temperatures which may require anti-seize. Sold in 12 oz. bottle or in a case.

Description	12 Oz. Bottle	1 Case (12/12 Oz. Bottles)
Liquid Assembly Lube	RED80319	RED80329





Assembly Lube

Recommended by many leading engine builders, lubricant has three times greater film strength than conventional molybdenum disulfide greases. May be used on camshafts, lifters, piston skirts, main and rod bearings, etc. Sold in 4 oz. or 16 oz. tubs, or in cases.



Description	4 Oz. Tub	16 Oz. Tub	1 Case (12/4 Oz. Tubs)	1 Case (12/16 Oz. Tubs)
Assembly Lube	RED80312	RED80313	RED80322	RED80323

WaterWetter®

A unique wetting agent for cooling systems, it reduces water temperatures as much as 30°F. WaterWetter® can be added to new or used antifreeze to improve the heat transfer of ethylene and propylene glycol systems. Sold in 12 oz. bottle or a case.



Description	12 Oz. Bottle	1 Case (12/12 Oz. Bottles)
WaterWetter	RED80204	RED80224

Power Steering Fluid

Red Line's Power Steering Fluid provides improved wear protection and resists thermal breakdown. Fully synthetic fluid also resists evaporation and foaming at high temperatures. Suitable in most power steering units. Sold in one quart bottles or a case.



Description	1 Quart Bottle	1 Case (12/12 1 Quart Bottles)
Power Steering Fluid	RED30404	RED30424

Shock Oil

Red Line Shock Oils change very little with temperature variations and actually lower shock absorber operating temperatures. Foaming resistance is excellent and synthetic base stocks provide little seal drag. Sold in 16 oz. bottle, 1 gallon, or in a case.



16 Oz. Bottle	1 Case (12/16 Oz. Bottles)	1 Gallon Container	1 Case (12/1 Gallon Containers)
RED91102	RED91103	RED91105	RED91104

REESE®



Class III And IV Receiver Hitches

Reese offers custom fit ("no drill") and universal Class III and IV Hitches. Each hitch includes mounting hardware. Hitch draw bar and ball must be purchased separately. Please see the receiver hitch rating guide below and call for specific applications.

Receiver Hitch Rating Guide

Weight Class	Gross Trailer Weight (GTW)	Tongue Weight (TW) With Weight Distributing (WD)
Class III	8,000 Lbs.	800 Lbs.
Class IV	12,000 Lbs.	1,200 Lbs.
Class V	14,000 Lbs.	1,700 Lbs.

CV-2 Synthetic Grease RED80402

CV-2 Grease has a very high melting point, excellent water washout resistance, and superior anti-wear characteristics. Lubricant contains an organic moly and is great for wheel bearings, high-angle and conventional CV-joints, chassis lubrication and high temperature industrial equipment. Sold in a 14 oz. cartridge.



Alcohol Fuel Lubricant

A high-performance synthetic provides maximum power and extends engine life by reducing piston ring and fuel pump friction. Use one to two 12 oz. bottles per 55 gallon drum. Sold in 12 oz. bottle or a case.



Description	12 Oz. Bottle	1 Case (12/12 Oz. Bottles)
Alcohol Fuel Lubricant	RED41102	RED41122

Two-Stroke Racing Oil

Dyno proven for gains of 3-5% more horsepower. Oil's high temperature stability prevents deposits from forming in combustion chambers, exhaust ports, upper ring and piston crown. Recommended mix ratio is 50:1, but may be used at up to 100:1 depending upon operating conditions. Sold in 16 oz. bottle, 1 gallon, or in a case.



16 Oz. Bottle	1 Case (12/16 Oz. Bottles)	1 Gallon Container	1 Case (12/1 Gallon Containers)
RED40603	RED40623	RED40605	RED40625

Two-Cycle Kart Oil

Lubricant offers improved bearing protection when compared to castor bean oils, while allowing operation at up to 25° greater cylinder head temperature. May be mixed at higher fuel ratios than other kart oils. Sold in 16 oz. bottle or in a case.



Description	16 Oz. Bottle	1 Case (12/16 Oz. Bottles)
Two-Cycle Kart Oil	RED40403	RED40423

Brakeman Ultra Brake Control

REE83520

Engineered for 1 to 4 axle trailers, Ultra brake control includes overload and digital output indicators, "up-front" manual over-ride control and soft touch thumb wheels. "Plug-n-play" wiring harness sold separately.



Brakeman Compact Brake Control

REE83501

The Brakeman brake control is 100% solid state. Suitable for 1 or 2 axle trailers, unit meets all NHTSA regulations regarding tow vehicle/trailer stoplight activation. The perfect choice for today's towing vehicles.



XD480 Standard Definition Camera System

Ideal for recording in-car motorsports action, the Replay XD camera offers high clarity video and audio quality in an extremely compact package. Durable, aluminum housed unit is easy to operate; simply turn it "on" to record and "off" to finish. Camera uses a rechargeable internal polymer Li-ion battery for power and will playback on a PC with Windows XP or Mac OS X. Camera is 21.4mm x 69mm and weighs just 1 ounce. Includes USB DC car and wall chargers, USB cable, micro SDHC 4GB card, soft case, soft bag, lanyard, swivel and cup/tilt mounts, and user guide. May be mounted with chassis clamps or suction cup mounts. Suction cup mini clamp (REP70-RPXD-SCM-MC) allows adding one, two or three more cameras to the suction cup mount, ideal when multiple camera angles are desired.



Part No.	Description
REP01-RPXD-CSXD480	Standard Definition Camera System
REP70-RPXD-CC480	Camera Clamp, XD480

Note: Camera may be mounted to roll bar/cage tubing using the proper chassis clamp, offered separately. See Replacement/Accessory Components for required chassis clamp.

Replacement/Accessory Components

Part No.	Description
REP20-RPXD-LB	Lens Bezel Kit
REP20-RPXD-CAP-ORING	Rear Cap O-Ring
REP70-RPXD-CM-1*	Chassis Clamp, 1"
REP70-RPXD-CM-1-1/4*	Chassis Clamp, 1-1/4"
REP70-RPXD-CM-1-1/2*	Chassis Clamp, 1-1/2"
REP70-RPXD-CM-1-3/4*	Chassis Clamp, 1-3/4"
REP70-RPXD-SCM-SA*	Suction Cup Mount, Short Arm
REP70-RPXD-SCM-LA*	Suction Cup Mount, Long Arm
REP70-RPXD-SCM-MC*	Suction Cup Base, Mini Clamp Arm



* Chassis clamps and suction cup mounts must be used in with the camera clamp for proper mounting.

XD1080 High Definition Camera System

The XD1080 combines the benefits of a compact, lightweight camera with the ability to offer full, 1080P HD live streaming through the built-in HDMI-out connector. Easy-to-use camera, which is just 1.1" dia. x 3.6" long and weighs only 3 ozs., uses a hard anodized aluminum, water resistant housing that includes simple on/off and start/stop. Simply turn it on and press record to start. Record and stream videos simultaneously or stream video directly to an external HD recorder, HDMI microwave, WiFi and 4G transmitters. Easy-to-use modes for 1080P @ 30fps, photo @ 1, 5, 10 and 15 second intervals, internal and external audio, record, stop, play, skip forward, skip reverse, clip file and live video out. Sold complete with HeimLock adjustable mount, LowBoy fixed mount, (2) flat base VHB SnapTrays, (2) curved base VHB SnapTrays, 4GB microSDHC card, microSDHC USB reader, USB cable, HDMI cable, universal USB DC wall adapter, car USB charger, user guide, camera safety leash, silk camera bag, ballistic nylon carrying case and decals. Requires REP70-PRXD-CC1080 camera clamp for mounting.



Part No.	Description
REP01-RPXD1080-CS	XD1080 High Definition Camera System
REP70-RPXD-CC1080	Camera Clamp, XD1080

Note: Camera may be mounted to roll bar/cage tubing using the proper chassis clamp, offered separately. See Replacement/Accessory Components for required chassis clamp.

RICHMOND GEAR

Ring and Pinion Installation Kits

Includes all of the hard-to-find components required to properly install a ring and pinion set. Installation Kits include cover gasket, ring gear bolts and washers, crush sleeve, gear marking compound, pinion and carrier bearings, pinion and carrier shims, pinion nut and washer, pinion seal, thread locking compound and silicone sealer. Mega Kits include the same components as the Installation Kits with the addition of axle seals and axle bearings to perform a comprehensive differential rebuild.

Application	Installation Kit	Mega Kit
Ford 9", 2.891" Carrier Bearings	RIC83-1011-1	-
Ford 9", 3.062" Carrier Bearings	RIC83-1013-1	-
GM 7.5" 10-Bolt, 1977-81	RIC83-1016-1	-
GM 8.5" 10-Bolt	RIC83-1021-1	RIC83-1021-M
GM 7.5" 10-Bolt, 1982-98	RIC83-1044-1	-



Cory Casagrande



Jim Peterson

Photo By: DMS Photography

Ring And Pinion Sets

Richmond Gear is the leading manufacturer of professional quality, ring and pinion sets that deliver the winning performance racers have come to expect.



Ford 9"

- Oval Housing, 10 Holes
- 10-Bolt Carrier
- 9.00" Diameter Ring Gear
- 1.313" Diameter Pinion, 28-Spline
- '57-87 Ford Cars and Trucks

Installation Kits:

RIC83-1011-1 (2.891" Carrier Bearing)

RIC83-1013-1 (3.062" Carrier Bearing)



Ratio	Teeth	Part No.	Ratio	Teeth	Part No.
3.50	35-10	RIC49-0027-1	5.00	35-7	RIC69-0360-1
3.55	39-11	RIC69-0195-1	5.14	36-7	RIC69-0068-1
3.70	37-10	RIC69-0361-1	5.29	37-7	RIC69-0270-1
3.89	35-9	RIC69-0177-1	5.43	38-7	RIC69-0069-1
4.00	36-9	RIC69-0272-1	5.67	34-6	RIC69-0070-1
4.11	37-9	RIC69-0179-1	5.83	35-6	RIC69-0288-1
4.33	39-9	RIC69-0161-1	6.00	36-6	RIC69-0199-1
4.44	40-9	RIC69-0368-1	6.20	31-5	RIC69-0290-1
4.56	41-9	RIC69-0185-1	6.33	38-6	RIC69-0276-1
4.71	33-7	RIC69-0362-1	6.50	39-6	RIC69-0197-1
4.86	34-7	RIC69-0067-1			

"Lite" Ford 9"

Spool Not Included

Ring and pinion sets are machined for substantial rotational weight savings. Sets listed are up to 6 lbs. lighter than standard ring and pinion sets.



Ratio	Teeth	Part No.	Ratio	Teeth	Part No.
4.11	37-9	RIC69-0179-L	6.00	36-6	RIC69-0199-L
4.86	34-7	RIC69-0067-L	6.20	31-5	RIC69-0290-L
5.00	35-7	RIC69-0360-L	6.50	39-6	RIC69-0197-L
5.14	36-7	RIC69-0068-L	6.83	41-6	RIC69-0417-L
5.43	38-7	RIC69-0069-L	7.00	35-5	RIC69-0418-L
5.83	35-6	RIC69-0288-L			

GM 7.5"-7.625"

- 8-5/16" X 10-9/16", 10 Holes
- 7.5" and 7.625" Dia. Ring Gear
- 1.438" Dia. Pinion Stem
- 27-Spline Pinion
- 1977-02 GM Cars and Trucks .10 Bolt

Installation Kits:

RIC83-1016-1 1977-81

RIC83-1044-1 1982-98



Ratio	Teeth	Part No.	Ratio	Teeth	Part No.
2.73	41-15	RIC49-0048-1 [§]	3.73	41-11	RIC49-0046-1 ^{††}
3.08	40-13	RIC49-0001-1 [§]	3.73	41-11	RIC49-0007-1 [§]
3.23	42-13	RIC49-0044-1 ^{††}	4.10	41-10	RIC69-0322-1 ^{††}
3.23	42-13	RIC49-0003-1 [§]	4.10	41-10	RIC49-0009-1 [§]
3.42	41-12	RIC49-0045-1 ^{††}	4.56	41-9	RIC69-0324-1 ^{††^}
3.42	41-12	RIC49-0005-1 [§]			

Installation Notes For GM 7.5"/7.625"

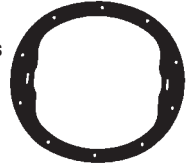
§ 3.08 ratio and numerically lower carrier.

†† 3.23 ratio and numerically higher carrier.

^ Needs special cross pin 80-0270-1.

GM 8.5"

- Oval Cover
- 11", 10 Holes or Irregular Cover 10-5/8", 10 Holes
- 8.50" Diameter Ring Gear
- 1.626" Diameter Pinion, 30-Spline
- 1970-96 GM Cars and Trucks



Installation Kit: RIC83-1021-1

Ratio	Teeth	Part No.	Ratio	Teeth	Part No.
3.08	40-13	RIC49-0017-1	4.10	41-10	RIC69-0165-1
3.23	42-13	RIC49-0019-1	4.56	41-9	RIC69-0167-1
3.42	41-12	RIC49-0278-1	4.88	39-8	RIC69-0169-1
3.70	37-10	RIC49-0033-1	5.13	41-8	RIC69-0171-1
3.73	41-11	RIC49-0041-1	5.38	43-8	RIC69-0173-1 [†]
3.90	39-10	RIC49-0034-1	5.57	39-7	RIC69-0175-1 [†]

Installation Notes for GM 8.5": When replacing stock 2.56 and numerically lower, the carrier must be replaced with a carrier of 2.73 or higher.

† Needs special cross pin 80-0272-1.

EXCEL Ring And Pinion Sets



EXCEL ring and pinion sets offer the benefits of exceptional value and OEM-like quality. Gear design, tooling, steel selection, heat treat and quality are controlled exclusively by Richmond Gear. Ring and pinion sets are ideal for street or mild circle track applications.



Part No.	Ratio	Teeth	Part No.	Ratio	Teeth
Ford 8.8"			GM 10-Bolt 7.5"/7.625"		
RICF88373	3.73	41-11	RICGM753730E*	3.73	41-11
RICF88410	4.10	41-10	RICGM754100E*	4.10	41-10
Ford 9"			RICGM75410TK [@]	4.10	41-10
RICF9389	3.89	35-9	GM 12-Bolt 8.5"		
RICF9411	4.11	37-9	RICGM85373	3.73	41-11
RICF9433	4.33	39-9	RICGM85410	4.10	41-10
RICF9456	4.56	41-9	RICGM85456	4.56	41-9
RICF9471	4.71	33-7	GM 12-Bolt 8.875"		
RICF9486	4.86	34-7	RIC12BC373 [#]	3.73	41-11
RICF9500	5.00	30-6	RIC12BC373T*	3.73	41-11
RICF9514	5.14	36-7	RIC12BC410 [#]	4.10	41-10
RICF9543	5.43	38-7	RIC12BC410T*	4.10	41-10
RICF9567	5.67	34-6	RIC12BC456 [#]	4.56	41-9
RICF9583	5.83	35-6			
RICF9600	6.00	30-5			
RICF9620	6.20	31-5			
RICF9633	6.33	38-6			
RICF9650	6.50	39-6			

Note: Please see previous diagrams for differential identification.

Use with 4-Series Carrier.

*** Use with 3-Series Carrier.**

@ Use with 2-Series Carrier.

Gear Marking Compound

RIC55-0001-1

Compound is applied to ring and pinion gears during initial set-up to show gear contact pattern.



Ring and Pinion Installation Video

RICVIDEO

A must for any racer's tool box or library. DVD format video covers the step-by-step procedure for proper ring and pinion set-up.





Impact Gloves

The ultimate mechanics glove offers splitfit gel palm, comfortable 3mm gel palm padding, compression molded knuckle protection and an elastic cuff.



Size	Black	Blue	Red	Hi-Vis Green	All Black
Small	RIN143-08	RIN141-08	RIN145-08	RIN146-08	RIN147-08
Medium	RIN143-09	RIN141-09	RIN145-09	RIN146-09	RIN147-09
Large	RIN143-10	RIN141-10	RIN145-10	RIN146-10	RIN147-10
X-Large	RIN143-11	RIN141-11	RIN145-11	RIN146-11	RIN147-11
XX-Large	RIN143-12	-	RIN145-12	RIN146-12	-

Authentic Gloves

Single palm and hidden seams offer a snug fit and eliminate snagging. Synthetic leather finger and palm material and tough Spandex top extend life.



Size	Black	Blue	Red	Hi-Vis Green
Small	RIN133-08	RIN131-08	RIN135-08	RIN138-08
Medium	RIN133-09	RIN131-09	RIN135-09	RIN138-09
Large	RIN133-10	RIN131-10	RIN135-10	RIN138-10
X-Large	RIN133-11	RIN131-11	RIN135-11	RIN138-11
XX-Large	RIN133-12	-	-	RIN138-12

Quick Fit Gloves

Quick Fit gloves offer vital protection from nicks, cuts and abrasions at an economical price. Easy to put on, gloves offer incredible dexterity. Available in black only.



Small	Medium	Large	X-Large	XX-Large
RIN113-08	RIN113-09	RIN113-10	RIN113-11	RIN113-12

Tire Buddy Gloves

Tire Buddy gloves, specifically designed for pit crews, feature rubberized Zues Clarino fingers and highly abrasion resistant, EVA foam-padded palms. Offered in black only.



Small	Medium	Large	X-Large	XX-Large
RIN103-08	RIN103-09	RIN103-10	RIN103-11	RIN103-12

Quick Fit Knee Protection System

RIN553-09

A unique combination of neoprene athletic knee wrap and Velcro on a replaceable knee pad. Non-binding, comfortable pad may be repositioned for individual needs. Not a slip-on type, it easily wraps around knee area. One size fits all.



Kevlar Heat Sleeves

RIN503-00

Dual layer Kevlar comfortably protects the forearms from burns, cuts and abrasions. Baked on Fibershield coating helps repel hot liquids. Sleeves may be worn with gloves. One size fits all.



Tom Fares Jr.



Chris Collier



Eric McGlothlen

Photos By: John Berglund

Robic®

Multi-Mode Stopwatch ROBSC-501

Provides two options: Interval lap or accumulated split timing.

- Can be used for single events
- 1/1000 second resolution to 24 hrs.
- Auto release to running time
- Single action time readings
- Time out (pause) timing
- Audible beep confirmation



300 Dual Memory Speed And Chrono ROBSC-848W

Powerful, yet precise unit analyzes performance in several methods.

- 300 memory recall of lap speed, time and number
- 300 dual split memory recall
- User selectable running lap or split time
- EL backlight illuminates entire display
- 1/100 second precision to 100 hours
- Advanced countdown timers show time remaining



Five Memory Chrono ROBSC-505

Multi-mode stopwatch with memory recall and lap counter.

- Lap, split or event timing
- 1/1000 second resolution to 24 hrs.
- Five memory recall
- Auto lap counter to 99
- Auto lap/split release
- Single action time readings
- 1st-5th place times
- Time out (pause) timing



Oslo Silver 30 ROB67734

Professional quality, economically-priced stopwatch with 30 dual split memory recall.

- Lap, split or dual split timing options
- Automatic lap counter to 99
- Extra large display
- EL backlight for nighttime or low light use
- Time of day, alarm and calendar



Oslo Silver 100 ROB67704

Professional quality, economically-priced stopwatch with an array of advanced performance measurement functions.

- 100 dual memory recall of lap and split times
- Records fastest, slowest and average lap times
- 1/100 second precision to 10 hours
- Extra large display
- Three line display shows lap, split and accumulated running times
- EL backlight for nighttime or low light use



50 Lap Memory Chronograph And Countdown Timer ROBSC-606W **NEW!**

Multi-mode stopwatch has a 50 dual lap memory in ascending or descending order.

- 1/100 second resolution to 24 hrs.
- Time of day, alarm and calendar
- Automatic lap counter to 50
- Auto release to running time
- Auto lap/split release



Oslo Silver 2.0 ROB67744

Combines a multi-mode stopwatch with an easy-to-use countdown timer.

- Event, lap or split timing
- 1/100 second precision to 10 hours
- Countdown timer shows time remaining
- Audible alarm at countdown
- Extra large display
- Two finish timer memory recall



Doug Ausra



Pat Harding

Photo By: Doug Swift



Phil Ausra



Steve Ausra

Photos By: John Berglund



High Performance Timing Chain Sets

Rollmaster double roller timing sets are available in Red Series and Gold Series. Red Series standard billet steel sets have an induction hardened, nine-keyway crankshaft sprocket and IWIS double roller chain. Gold Series sets have premium billet, nitrided sprockets for extended life. (All sets are available with -.005" and -.010" reduced center distances to fit line bored engines. Add "-LB5" for .005" or "-LB10" for .010" reduced distance to the suffix of the part number. Example: ROLCS1000-LB5.



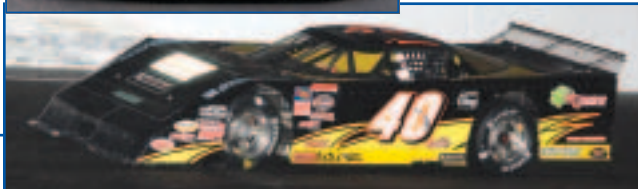
Description	Red Series Part No.	Gold Series Part No.
Chevrolet		
Small Block 262-400, Thrust Washer	ROLCS1000	-
Small Block 262-400, Torrington Bearing	ROLCS1040	ROLCS1050
Small Block Gen. III LS1, Torrington Bearing	ROLCS1136	ROLCS1160
Small Block Gen. III LS2, Torrington Bearing	ROLCS1185	-
Chrysler		
Small Block 273-360	ROLCS5000	ROLCS5010
Ford		
Small Block 289-351W, 1962-84, Thrust Washer	-	ROLCS3020
Small Block 289-351W, 1962-84, Torrington Bearing	-	ROLCS3031
Small Block 302-351W, 1984-Up, Thrust Washer	-	ROLCS3060
Small Block 302-351W, 1984-Up, Torrington Bearing	-	ROLCS3071

Vernier Adjustable High Performance Timing Chain Sets

Top-of-the-line Gold Series Vernier Adjustable sets' unique two-piece cam sprocket with elongated slots allows precise, virtually infinite timing adjustments. Special, perimeter socket head screws secure the sprocket once the camshaft is degreed. All sets use premium billet steel, nitrided sprockets and IWIS double roller timing chains.



Part No.	Application
ROLCS1230Small Block Chevy 262-400, Torrington Bearing
ROLCS1265Small Block Chevy Gen. III LS1, Torrington Bearing
ROLCS5200Small Block Chrysler 273-360
ROLCS3240Small Block Ford 289-351W, 1962-84, Torrington Bearing
ROLCS3241Small Block Ford 302-351W, 1984-Up, Torrington Bearing



Jamison Russell

Photo By: Jim DenHamer (upper) Tom DeVette (lower)



High Performance Lubricants

Royal Purple Extreme Performance And Racing (XPR) Motor Oil is the only engine oil with Synerlec, a superior lubricating ingredient which clings to all critical engine parts, creating less friction than any other petroleum or synthetic lubricant. Improved horsepower and longer engine life can be expected with this revolutionary lubrication product.

XPR SAE 0W10

An ultra-light viscosity synthetic oil recommended for small to medium displacement engines. Viscosity typical of a 0W10 oil.

Description	1 Qt. Bottle	1 Case 12/1 Qt. Bottles	5 Gallon Pail
SAE 0W10	ROY01009	ROY12009	ROY05009



XPR SAE 5W20

A light viscosity synthetic oil for small to medium displacement engines. Viscosity typical of 5W20 oil.

Description	1 Qt. Bottle	1 Case 12/1 Qt. Bottles	5 Gallon Pail
SAE 5W20	ROY01011	ROY12011	ROY05011



XPR SAE 5W30

A horsepower and torque enhancing synthetic oil with superior wear characteristics. Viscosity typical of a 5W30 oil.

Description	1 Qt. Bottle	1 Case 12/1 Qt. Bottles	5 Gallon Pail
SAE 5W30	ROY01021	ROY12021	ROY05021



XPR SAE 10W40

A synthetic oil capable of enduring long periods of extreme heat without breakdown. Viscosity typical of a 10W40 oil.

Description	1 Qt. Bottle	1 Case 12/1 Qt. Bottles	5 Gallon Pail
SAE 10W40	ROY01041	ROY12041	ROY05041



XPR SAE 20W50

A synthetic oil for performance engines that have used traditional 20W50 oils in the past. Provides as much as a 3% horsepower increase. Contains Synerlec, which has a very high load carrying capacity.

Description	1 Qt. Bottle	1 Case 12/1 Qt. Bottles	5 Gallon Pail
SAE 20W50	ROY01051	ROY12051	ROY05051

