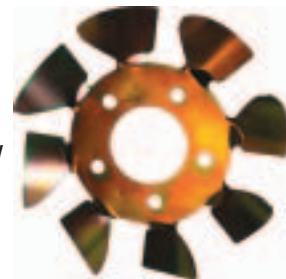




**NEW VENDOR**

## Ultra Cool Brake Fans

Race tested and proven to effectively lower brake temperatures, Ultra Cool Brake Fans save race teams money by extending rotor and pad life. Patent-pending brake fans are the only product currently available that cools the wheel side of the caliper, providing more CFM of cooling air, while remaining lighter and more cost effective than traditional brake duct, hose and blower systems. Product simply sandwiches between the hub and wheel, and may be double stacked for even greater air flow. Brake fans are sold as left or right applications and are designed for use with 5/8" studs.



Description	Left Part No.	Right Part No.
Small 5, 4-1/2" Thru 5-1/8" B.C., 3-7/16" Center Hole	UCBLMBFS5-625L*	UCBLMBFS5-625R*
Wide 5, Fits 0" Thru 6" Offset Wheels	UCBLMBFW5L†	UCBLMBFW5R†

\* Does not fit Cup style or most street car hubs due to fan blade to caliper interference.

† Fits only steel wheels with rectangular cut holes between lug holes in flange.

## ULTRA-SHIELD RACE PRODUCTS

### Tear-Aways

Ultra Shield Tear-Aways are made from high quality, specially coated plastic for a tight, wrinkle-free fit. Coating provides maximum visibility without distortion. Tear-Aways are 2 mil thick, packed in zip lock bags, 20 pieces per bag, with 10 bags in 1 box.

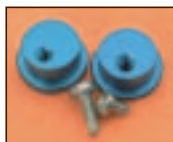


Box Part No.	20 Pc. Bag Part No.	Description
ULT1201C	ULT1201C-1	11-1/2" Post Centers/Straight, Simpson, Arai
ULT1202C	ULT1202C-1	12-3/8" Post Centers/Curved, Bell, G-Force, Pyrotech
ULT1203C	ULT1203C-1	11-1/2" Post Centers/Curved, Simpson SX/Voyager
ULT1204C	ULT1204C-1	11-1/2" Post Centers/Notch in Nose, Simpson RX/Bandit, Diamondback
ULT1207C	ULT1207C-1	11-1/2" Post Centers, 3", Impact Champ
ULT1208C	ULT1208C-1	12" Post Centers/Straight, Simpson (Older Bandits), Sparco
ULT1209C	ULT1209C-1	13" Post Centers/Curved, Simpson Shark
ULT1212C	-	10-3/4" Post Centers, Bieffe
ULT1213C	ULT1213C-1	13" Post Centers, Simpson Super Shark/Vudo, Draft, Spider, Invader, Valor
ULT1216C	ULT1216C-1	10-7/8" Post Centers, Bell X-15, Impact Little Champ
ULT1230C	ULT1230C-1	11-5/8" Post Centers, Impact Vapor/ Charger
ULT1256C	-	12-1/4" Post Centers, Bell GTX.2, GP.2, Star GP, Star Infusion

### Replacement Buttons

Eccentric buttons replace worn shield buttons to securely mount Tear-Aways.

Part No.	Description
ULT1901	Aluminum Buttons, Pair
ULT1902	Plastic Buttons, Pair



### 360° Neck Collar

360° neck collars are manufactured from high density, flame retardant foam and are covered with heavy, flame retardant Proban material.

Part No.	Description
ULT39111	Black 360° Neck Collar
ULT39112	Red 360° Neck Collar
ULT39113	Blue 360° Neck Collar



### Pro Seats

Pro Seats 20° layback seats feature an aluminum extrusion around the perimeter of the seat and is made from .125" thick 5052 grade aluminum. The seat is compatible with HANS and other head and neck restraints. Covers in black, red, or blue must be purchased separately.



Size	Seat Part No.	Black Cover Part No.	Red Cover Part No.	Blue Cover Part No.
15"	ULT125200	ULT125101	ULT125102	ULT125103
16"	ULT126200	ULT126101	ULT126102	ULT126103
17"	ULT127200	ULT127101	ULT127102	ULT127103
18"	ULT128200	ULT128101	ULT128102	ULT128103

### VS Halo Full Containment Seats

Lightweight, .100" grade 5052 aluminum seats feature reinforced head, shoulder and torso areas, and are compatible with HANS and other head and neck restraints. Seats are offered in 10° or 20° layback. Full or modular covers, in black only, must be purchased separately.



Size	20° Seat Part No.	10° Seat Part No.	Full Cover Part No.	Modular Cover Part No.
14"	ULT164200	ULT164100	ULT164101	ULT164111
15"	ULT165200	ULT165100	ULT165101	ULT165111
16"	ULT166200	ULT166100	ULT166101	ULT166111
17"	ULT167200	ULT167100	ULT167101	ULT167111
18"	ULT168200	ULT168100	ULT168101	ULT168111

### Lightweight Halo Full Containment Seats

Lightweight, 20° layback seats are made from .100" grade 5052 aluminum and have reinforced head, shoulder and torso areas. High density, closed cell impact absorbing foam is adhered to the head for added driver protection. Compatible with HANS and other head and neck restraints. Cover, offered in black, red or blue, must be purchased separately.



Size	Seat Part No.	Black Cover Part No.	Red Cover Part No.	Blue Cover Part No.
15"	ULT722400	ULT722311	ULT722312	ULT722313
16"	ULT724400	ULT724311	ULT724312	ULT724313
17"	ULT726400	ULT726311	ULT726312	ULT726313



All Items On This Page  
Ground Shipment Only

## Flameproof Coatings

Developed for the aerospace industry, heat resistant coating is ideal for use on headers, exhaust manifolds, etc. 11 oz. aerosol can.

Part No.	Color
VHTSP101	Flat White
VHTSP102	Flat Black
VHTSP106	Flat Silver
VHTSP108	Flat Yellow
VHTSP109	Flat Red
VHTSP110	Flat Blue
VHTSP115	Clear
VHTSP117	Flat Aluminum
VHTSP118	Flat White Primer



## "Quick Coat" Enamels

Designed to provide a tough and durable enamel coating without heat curing or special processing. Ideal for professional or home use. 11 oz. aerosol can.

Part No.	Color
VHTSP501	Fire Red
VHTSP504	Gloss Black
VHTSP507	Bright Aluminum
VHTSP509	Gloss White
VHTSP510	Flat Black



## Epoxy All Weather Coatings

VHT Epoxy Coating produces porcelain-like hardness with a high gloss. The durable finish makes it an excellent choice. 11 oz. aerosol can.

Part No.	Color
VHTSP650	Gloss Black
VHTSP651	Gloss White
VHTSP652	Satin Black



## Engine Enamels

Urethane resins provide exceptional durability under the most severe conditions. Paint will withstand spillage of the strong solvents and additives found in racing gasoline blends. 11 oz. aerosol can.

Part No.	Color	Part No.	Color
VHTSP120	Hemi Orange	VHTSP129	Gloss White
VHTSP121	Bright Red	VHTSP130	Flat Black
VHTSP122	Pontiac Blue	VHTSP132	Universal Gold
VHTSP123	Chevy Orange	VHTSP134	Ford Light Blue
VHTSP124	Gloss Black	VHTSP135	GM Blue
VHTSP125	Ford Dark Blue	VHTSP137	Ford Grey
VHTSP126	Early Chrysler Blue	VHTSP138	Ford Corporate Blue
VHTSP127	Aluminum	VHTSP139	GM Satin Black
VHTSP128	Gloss Yellow	VHTSP145	Gloss Clear



## Hi-Temp Brake Paint

High-Temp Paint may be used on aluminum or cast metals and is ideal for brake drums, and calipers. Will not rust, chip or crack. 11 oz. aerosol can.

Part No.	Color
VHTSP731	Real Red
VHTSP734	Gloss Black
VHTSP735	Cast Aluminum
VHTSP738	Bright Yellow
VHTSP739	Satin Black



## "Prime Coat" Sandable Primers

Provides an excellent base for enamel or synthetic lacquer paint. A quick, fast-drying base coat with excellent adhesion. 11 oz. aerosol can.

Part No.	Color
VHTSP301	White
VHTSP302	Dark Grey
VHTSP303	Red Oxide
VHTSP304	Light Grey
VHTSP305	Black
VHTSP306	Yellow



## Roll Bar And Chassis Paint

One step epoxy paint dries to a porcelain-like finish that is chemical, corrosion, rust and salt resistant. 11 oz. aerosol can.

Part No.	Color
VHTSP670	Gloss Black
VHTSP671	Satin Black



## "Nu-Cast" Cast Coatings

Makes cast iron parts look like new. Produces that original look and is a "must have" item for that restoration project. 11 oz. aerosol can.

Part No.	Color
VHTSP995	Aluminum Paint
VHTSP997	Cast Iron Paint
VHTSP998	Header Paint



## Oval Track Digital Tachometer

### VTAR700810

Backlit digital tachometer records maximum and minimum RPM, displays two complete lap time results at a time, calculates and displays best lap out of a session and stores up to 30 laps. Tach does not record under yellow flag and will work with both 4 and 8 cylinder engines with a magneto or distributor. Tachometer includes slide mount bracket and wire harness.



### Replacement Components

Part No.	Description
VTAR700801	.....Slide Mount Bracket
VTAR700803	.....Wire Harness Shielded



## Utility Jugs

Durable, five gallon utility jugs are offered in round and square versions. Square jugs fit flush against upright flat surfaces and are ideal where space is at a premium. Covered by a 5-year limited warranty against cracks, leaks or splitting. Available in a wide variety of colors. Cap is included.

Color	Round Part No.	Square Part No.
Black	VPF3394	VPF3584
Blue	VPF3034	VPF3534
Green	VPF3304	VPF3564
Orange	VPF3174	VPF3574
Purple	VPF3004	VPF3594
Red	VPF3014	VPF3514
Silver	VPF3314	VPF3604
White	VPF3024	VPF3524
Yellow	VPF2994	VPF3554



### Replacement/Accessory Components

Part No.	Description
VPF3042	Cap
VPF3044	Filler Hose
VPF3045	Vent Cap



## Siphon Pump VPF3051

Pump quickly siphons fuel from steel 55, 30 or 15 gallon drums.



Eric Hawk Jr.



## VR1 Racing Formula® Motor Oil

Oil is used by circle track racers in all classes, from street stock to Sprint Cup. Reduces engine wear and sludge, controls foaming and maintains peak engine power. Sold in one quart bottles.

Part No.	Description	Part No.	Description
VAL205	SAE 10W-30	VAL229	SAE 40
VAL211	SAE 20W-50	VAL235	SAE 50
VAL223	SAE 30	VAL241	SAE 60



## Durablend® Motor Oil

The #1 selling semi-synthetic motor oil in the U.S. Provides anti-wear protection, greater high and low temperature protection. Sold in one quart bottles.

Part No.	Description	Part No.	Description
VAL291	SAE 5W-30	VAL311	SAE 20W-50
VAL296	SAE 10W-30		



## Synthetic Motor Oil

Valvoline's 100% synthetic motor oil delivers superior lubrication, performance, and extreme temperature protection. Extensive testing has proven increased horsepower, less wear and cooler engine temperatures. Sold in one quart bottles.

Part No.	Description	Part No.	Description
VAL955	SAE 5W-30	VAL945	SAE 20W-50
VAL935	SAE 10W-30		



## Premium Conventional Motor Oil

Specially formulated motor oils include advanced additive technology and premium base oils for high performance and enhanced engine life. Multi-viscosity grades offer protection, while mono-grade oils are formulated for warmer conditions. Sold in one quart bottles.

Part No.	Description	Part No.	Description
VAL177	SAE 5W-30	VAL135	SAE 20W-50
VAL129	SAE 10W-30	VAL159	SAE 30
VAL141	SAE 10W-40		



## Valvoline Dexron III/Mercon Automatic Transmission Fluid VAL353

Transmission fluid is approved by General Motors under the Dexron III licensing system and by Ford under the Mercon licensing system. Sold in one quart bottles.



## Automatic Transmission Fluid Type FA VAL341

Premium quality transmission fluid meets Ford spec. M2C33-F. Sold in one quart bottles.



## High Performance 75W90 Synthetic Gear Oil VAL975

100% synthetic, extreme pressure 75W90 lubricant withstands high and low temperatures and may be used in conventional or limited slip differentials. Sold in one quart bottles.



## High Performance 80W90 Gear Oil VAL831

Offers superior protection to differential gears and bearings. Meets or exceeds requirements in all rear axles, including limited slip types. Meets API Services GL-5, GL-6 ratings. Sold in one quart bottles.



## Val-Plex EP® Grease VAL614

Premium quality, multi-purpose wheel bearing grease is formulated for maximum performance and protection. Resists high temperatures and withstands heavy loads. One pound can.





## All-In-One-Silicone

Premium grade RTV Silicone can fulfill all of a racer's sealing needs. Colors are low volatility, oxygen sensor safe and will withstand high temperatures. 3 oz. tubes or 11.3 oz. cartridges.

Description	3 Oz. Tube Part No.	11.3 Oz. Cartridge Part No.
Clear All-In-One Silicone	VLC71105	VLC71112
Black All-In-One Silicone	VLC71135	VLC71142
Aluminum All-In-One Silicone	VLC71195	VLC71202



## Tube-Grip® VLC71416

Tube-Grip® is an innovative, 14 gauge steel tool that can easily dispense material from flexible tubes with no waste. Applies 10 times the pressure of squeezing by hand and dispenses up to 35% more material out of each tube.



## Hylomar® Gasket Maker

Non-hardening, polyurethane-based Hylomar is impervious to gasoline, oil and any automotive fluid. Use Hylomar as a gasket maker, gasket dressing or thread sealant.

Part No.	Description
VLC71255	Hylomar Blue, Medium, 1.5 oz. Tube
VLC71260	Hylomar Blue, Medium, 250 ml Brush Top Can
VLC71283	Hylomar Blue, Medium, 100 Gram Tube
VLC71301	Hylomar, 3.5 oz. Tube



## HV-350™ Adhesive/ Sealant VLC71155

Valco HV-350's elasticity and abrasion resistance make it ideal for high vibration applications. Sandable material bonds both chemically and mechanically and can be used on porous and non-porous substrates such as wood, glass, plastic, vinyl, metal, fabric and even concrete. Can be thinned with solvents such as Valco Solvent 184 or lacquer thinner and be brushed on as a protective coating. Sold in 3.35 oz. tube.



## Epoxi•Putty VLC71636

Kneadable, steel reinforced Epoxy•Putty cures rock-hard within minutes of mixing. Can be drilled, tapped or filed after 1 hour and can withstand temperatures up to 500°F. Packaged in 2 oz. clear cylinder with cap.



## Peeler VLC71688

Removes silicone, paper or fiber gasket material more quickly and easily than a gasket scraper. Short, easy-to-hold Peeler has a unique, self-leveling blade assembly that won't dig in or gouge surfaces and maintains a good, sharp cutting edge.



## Thread Lockers

Anaerobic compounds developed for locking, retaining, and sealing fasteners and components. Work in a wide temperature range, corrosion, lubricate components during assembly and resist water and oils. Available in medium strength for parts that need periodic disassembly, and high strength for parts that will not be disassembled.

Part No.	Description
VLC71620	Medium Strength Blue, 10 ml Bottle
VLC71622	High Strength Red, 10 ml Bottle



## Gel Lube VLC71756

Unique lubricant sprays on as a liquid and instantly forms into a gel substance. Ideal for use during engine assembly process to prevent corrosion. Blends together with motor oil. Excellent corrosion protection for any engine or transmission which is to be stored.

Ground  
Shipment  
Only



## White Lithium Grease VLC795903

Multi-purpose, 12-hydroxy, lithium-based Grease has outstanding resistance to water and is perfect for high-speed, heavy load applications. Mechanically stable lubricant also contains oxidation and corrosion inhibitors. 10 oz. tube.



## Fastshine™ Cleaner/Detailer VLC71603

Fastshine gives a quick, professional shine to a variety of surfaces, including clear coat. Removes fingerprints, bugs, water spots, bird droppings, etc. 32 oz. spray bottle.



## Magic Mix® Metal Cleaner And Polish

The "Lazy Man's Polish" shines and protects aluminum, stainless steel, diamond plate, brass, gold, silver, magnesium and copper. Magic Mix® removes oxidation, tar and bugs from paint and even removes rust from chrome. For tough stains, clean and prepare metal with Magic Mix® Metal Cleaner.

Part No.	Description
VLC71610	Magic Mix® Cleaner and Polish Set, 8 oz. Each
VLC71611	Magic Mix® Polish, 8 oz. Bottle
VLC71640	Magic Mix® Polish, 16 oz. Bottle
VLC71644	Magic Mix Speed Wax, 16 oz. Bottle





### Warn 3700 Winch **WAR93700**

Engineered from the ground up using a best-in-class 1.9 horsepower motor and 3-stage planetary gear train to deliver 3,700 lbs. of pulling capacity. Multi-directional clutch allows easy freespooling. Includes 12' long remote control for power-in or power-out from a comfortable distance.



### Warn 4700 Winch **WAR94700**

High capacity, heavy duty winch makes work easy, combining a 3-stage planetary gear train with a 1.9 hp permanent magnet motor for up to 4,700 lbs. of line pull. Also includes a mechanical brake, 12' all-weather remote control and a 1/4" x 60' wire rope.



Line Pull	Motor	Wire Rope	Dimensions	Weight
<b>Winch Specification Chart</b>				
<b>3700</b>				
3,700 lbs.	1.9 hp	7/32" x 60'	17.38" L. x 6.11" H.	35 lbs.
<b>4700</b>				
4,700 lbs.	1.9 hp	1/4" x 60'	14.1" L. x 6.5"	42 lbs.

### Warn Works Accessory **WAR88205**

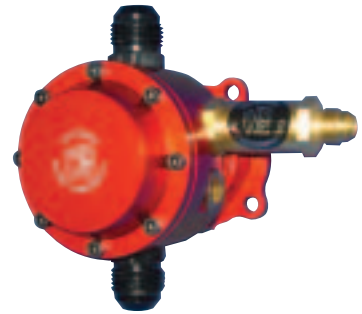
Replacement remote control, 3700/4700 winches, 12' Lead.



### NEW VENDOR

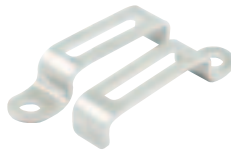
### Late Model Fuel Pump **WATLM300**

Engineered for circle track racing, Late Model Fuel Pump is machined from forged aluminum and fitted with machined steel shafts and precision lapped gears. Includes a swivel flange for easy rotation and alignment after mounting and a -6AN jetted check valve. Should be used with a dead head style fuel pressure regulator. May be used in either clockwise or counter-clockwise rotation.



### Spark Plug Wire Keepers **WEHWM15**

Stamped brackets mount to cylinder head, or block, and prevent spark plug wires from dangling near headers. Sold in pairs.



### Tranny Yoke Plugs

Machined aluminum plugs keep lubricant in and dirt out during transmission removal or storage. Plugs will fit many transmissions including GM 3- and 4-speed manuals.

**Part No. Description**  
 WEHWM26S.....Transmission Yoke Plug, Bert, Powerglide, TH-350, Muncie  
 WEHWM26B.....Transmission Yoke Plug, TH-400, Jerico



### Intake Divider **WEHWM74**

Divider separates water flow from side to side, improving cooling while reducing interference and back pressure. Use with aluminum or iron manifolds.



### Firewall Flange Bearing **WEHWM102**

Bearing has a lightweight aluminum flange and a .757" I.D.



### Fuel Barrel Socket **WEHWM233** *NEW!*

Open steel 15, 30 and 55-gallon steel racing fuel drums with ease. Billet steel socket accepts a 1" wrench.



### Slide-In Rack Spacers

Aluminum spacers ease bump steer adjustments.

**Part No. Description**  
 WEHWM150125..... 1/8" Thick Rack Spacer  
 WEHWM150250..... 1/4" Thick Rack Spacer  
 WEHWM150375..... 3/8" Thick Rack Spacer  
 WEHWM150500..... 1/2" Thick Rack Spacer



### Shifter Setback Mount **WEHWM146**

Special shifter mount, designed for use with popular T-10 transmissions, aids driver's reach and comfort. Mount is setback the standard 4" and is also drilled for a 6" setback, if desired.



### Ball Joint Remover **WEHWM130**

Tool adjusts from 5" to 7". Place between joint tips, apply pressure, and tap spindle to remove the ball joint.





## Wide 5 Dust Covers

Covers include machined reliefs for spindle clearance on most wide five hubs.

Part No.	Description
WEHWM21	Wide 5 Dust Cover, Each
WEHWM21B	Wide 5 Dust Cover Aluminum Bolt, 7/16" x 3/4" Long, Each
WEHWM21S55	Wilwood Starlite 55 Wide 5 Dust Cover, Each



## Universal Wide 5 Wheel Spacer WEHWM144

Compatible with all Wide 5 wheels, 1" thick billet aluminum spacer includes 5/8"-11 studs.



## 2" x 3" Rectangle Weight Mount WEHWM132X3

Billet aluminum bracket provides mounts for ballast on 2" x 3" frame rails. May also be used to attach other components to frame rails without welding.



## Steel Weld Accessory Clamps

Lightweight steel clamps, which attach directly to 1-1/2" or 1-3/4" round chassis tubing, are typically used to weld-on accessories.

Part No.	Description
WEHWM43150S	Steel Weld Accessory Clamp, 1-1/2" Dia.
WEHWM431750S	Steel Weld Accessory Clamp, 1-3/4" Dia.



## Aluminum Shock Mount WEHWM221 **NEW!**

Mount shocks, fifth or sixth coil directly to 1-1/2" dia. round chassis tubing. Mounting hole is 3" below centerline of tube.



## Shock Reservoir Mounts

Two-piece mounts for Penske or Ohlins cans clamp on with one screw. Fits 1-1/2" dia. tubing and swivels 360° for easy positioning.

Part No.	Description
WEHWM138150	Penske Shock Reservoir Mount
WEHWM141150	Ohlins Shock Reservoir Mount



## Quick Change Shock Pin WEHWM48

Aluminum pin eases shock absorber changes. Includes "diaper pin".



## 3-Hole 2" x 2" Panhard Bar Mount WEHWM623

Change Panhard bar length by 2-9/16" by just swapping bars out. Mount fits 2" x 2" square tubing, and has a stainless steel insert in the middle hole to prevent pulled out threads.



## Aluminum Roller Bearing Birdcage For Rocket Chassis WEHWM300-ROCKET

Modular aluminum birdcage offers unsurpassed adjustability and options to dirt late model Rocket chassis. Birdcage is manufactured from fully CNC-machined billet aluminum, which provides the benefits of reduced unsprung weight, when compared to steel units, without compromising strength.



## Birdcage Housing Washer WEHWM93W

Oil impregnated bronze washer fits between axle housing and clamp rings to prevent costly housing damage.



## Adjustable J-Bars

Offered in D.O.M. (Drawn Over Mandrel) steel or lightweight, billet aluminum, J-bars may be adjusted up to 2" without disconnecting from chassis.

Part No.	Description
WEHWM4018-20	Aluminum Adjustable J-Bar, 18"-20"
WEHWM4020-22	Aluminum Adjustable J-Bar, 20"-22"
WEHWM4022-24	Aluminum Adjustable J-Bar, 22"-24"
WEHWM40S18-20	Steel Adjustable J-Bar, 18"-20" <b>NEW!</b>
WEHWM40S20-22	Steel Adjustable J-Bar, 20"-22" <b>NEW!</b>



## Dirt Late Model Lift Bar WEHWM215D **NEW!**

Engineered exclusively for dirt late models, rigid, yet lightweight aluminum lift bar includes fifth coil mounts at 32", 34", 36" and 38", and a sixth coil mount at 40". Sold complete with rear end brackets and required mounting hardware.



## Limit Chain Holder With Bearing **NEW!**

Limit Chain Holder features a no-bind design, allowing the chain to stay free during suspension travel on the left rear.

Part No.	Description
WEHWM210AK	Limit Chain Holder, Aluminum
WEHWM210SK	Limit Chain Holder, Steel



## Limit Chain Frame Mount WEHWM2141750 **NEW!**

Specialized frame mount, which bolts directly to 1-3/4" round chassis tubing, allows aligning and adjusting chain without having to unhook it. Sold complete with clevis, adjuster and mount.



## 3/4" Double Adjusters

Machined from stainless steel, 3/4" double adjusters are offered in three lengths.

Part No.	Description
WEHWM40A	Short, 2-1/2" Of RH And LH Thread Length, 1/2" Center Hex Length, 5-1/2" Overall
WEHWM40AM	Medium, 2-1/2" Of RH And LH Thread Length, 1-1/2" Center Hex Length, 6-1/2" Overall
WEHWM40AL	Long, 2-1/2" Of RH And LH Thread Length, 2-1/2" Center Hex Length, 7-1/2" Overall

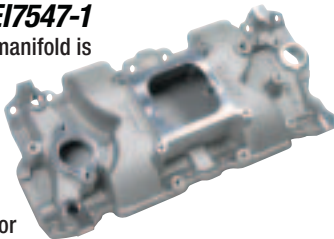




A Holley Performance Brand

### SB Chevy IMCA X-CEerator Intake Manifold WEI7547-1

Small block Chevy single plane manifold is currently the only spec. aluminum manifold for IMCA's SportMod class. It is an option in the IMCA Stock Car class. Low profile manifold has an open plenum and works well in the 2000-6500 RPM range. Square-bore carburetor flange.



### SB Ford X-CEerator Intake Manifold WEI7515

Small block Ford 221-302 X-Celerator is a 360°, single-plane, open plenum manifold, designed primarily for high performance street or oval track racing. With an effective range of 1500-7000 RPM, manifold works best with higher compression ratios, 280° (advertised) or more of cam duration and headers. Square-bore carburetor flange.



### Stealth Intake Manifolds

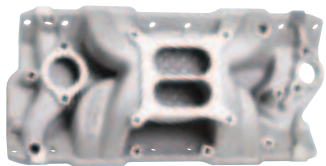
Weiland's top-of-the-line, aluminum dual plane manifolds make power from 1500 RPM all the way to 6,800 RPM, combining the low-end throttle response of an 180° intake with the top-end power of a single plane. Extensive dyno testing has shown that Stealth manifolds work well with aggressive camshaft profiles, competition type headers and high performance, aftermarket ignition systems. Square-bore carburetor flange.



Part No.	Description	Recommended RPM Range
<b>Small Block Chevy</b>		
WEI8150	262-400, 1957-86 And 1987-Up With Aluminum Heads	1500-6700 RPM
WEI8151	262-400, 1996-Up With Vortec Iron Heads	1500-6700 RPM
<b>Small Block Ford</b>		
WEI8020	221-302	1500-6800 RPM
WEI8023	351W	1500-6800 RPM

### Stealth AirStrike Intake Manifolds

Based on traditional Stealth design, with isolated runners added to reduce intake charge temperatures for more horsepower. Manifolds have a square-bore carburetor flange and no EGR provisions.



Part No.	Description	Recommended RPM Range
<b>Small Block Chevy</b>		
WEI8501	1957-86 262-400; 1987-Up With Aluminum Heads	1500-6800 RPM
WEI8502	262-400 With 1996-Up Vortec Iron Heads	1500-6800 RPM

### Team "G" Intake Manifolds

A premier competition manifold for single four barrel applications, Team "G" 360° single-plane, open plenum-type manifolds are used extensively in circle track competition. Water cross-over passages have been isolated for superior cooling. For best results, the engine should be equipped with headers and a performance ignition system.



Part No.	Description	Recommended RPM
<b>Small Block Chevy</b>		
WEI7530*	262-400, 1957-86 And 1987-Up With Aluminum Heads, Power Ram	2800-7200
WEI7531	262-400, 1957-86 And 1987-Up With Aluminum Heads, Track Ram, 2" Raised Plenum	3000-8200
WEI7532	262-400, 1957-86 And 1987-Up With Aluminum Heads, Track Ram, 3/4" Raised Plenum	2800-7800

\*NASCAR approved

### Square Bore To Spread Bore Carburetor Sealing Plate WEI9006

Use the sealing plate to bolt a square bore carburetor to a spread bore intake manifold with dual bolt pattern. Plate is 1/16" thick and includes gaskets.



### Team "G" Water Pumps

Redesigned pumps provide ample flow of coolant under the most demanding race conditions. Adjustable pumps have slotted mounting holes and locking adjusters, to adjust belt tension.

#### SB Chevrolet Corvette Water Pump

Fits 1971-82 Corvette water pump applications. Has 3/4" fan snout.

Part No.	Description
WEI9220	Standard Aluminum Water Pump
WEI9221	Adjustable Aluminum Water Pump



#### SB Chevrolet Short Water Pump

Fits 1968 and earlier short water pump applications. Converts to long design with WEI8207 spacers. Has 5/8" fan snout.

Part No.	Description
WEI9222	Standard Aluminum Water Pump
WEI9223	Adjustable Aluminum Water Pump



#### SB Chevrolet Long Water Pump

Fits long water pump applications. Features twisted long style snout design.

Part No.	Description
WEI9241	Standard Aluminum Water Pump





## Wide 5 XL Non-Lock Wheel With Mud Cover

For dirt late models, aluminum 15" x 14" wheel is exceptionally light and true with 5" of backspacing. Non-Lock Wheel includes new style mud cover.

Part No.	Description
WEL559-5405 .....	Wide 5 XL Non-BeadLoc Wheel, With Mud Cover
WELP650-4514A.....	Replacement Mud Cover, New Style



## Wide 5 XL Wheels

Light and extremely true, Wide Five XL wheels are cold forged from aluminum alloy with "Double-Wall" rim edges and upset forged, "coined" lug holes. Fully polished to a show quality finish.



Part No.	Size	Bolt Circle	Rear Spacing	Bead-Loc
WEL558-5013	15" x 10"	Wide 5	3.00"	None
WEL558-5014	15" x 10"	Wide 5	4.00"	None
WEL558-5015	15" x 10"	Wide 5	5.00"	None
WEL559-5214	15" x 12"	Wide 5	4.00"	None
WEL559-5215	15" x 12"	Wide 5	5.00"	None
WEL559-5225	15" x 12"	Wide 5	5.00"	Outer Bead-Loc
WEL559-5254	15" x 12"	Wide 5	4.00"	Bead-Loc With Cover
WEL559-5405	15" x 14"	Wide 5	5.00"	Non-Bead-Loc With Cover
WEL559-5405NC	15" x 14"	Wide 5	5.00"	Non-Bead-Loc, No Cover
WEL559-5413	15" x 14"	Wide 5	3.00"	None
WEL559-5414	15" x 14"	Wide 5	4.00"	None
WEL559-5415	15" x 14"	Wide 5	5.00"	None
WEL559-5425	15" x 14"	Wide 5	5.00"	Outer Bead-Loc
WEL559-5426	15" x 14"	Wide 5	6.00"	Outer Bead-Loc
WEL559-5435	15" x 14"	Wide 5	5.00"	Inner Bead-Loc
WEL559-5453	15" x 14"	Wide 5	3.00"	Bead-Loc With Cover
WEL559-5454	15" x 14"	Wide 5	4.00"	Bead-Loc With Cover
WEL559-5455	15" x 14"	Wide 5	5.00"	Bead-Loc With Cover
WEL559-5455NC	15" x 14"	Wide 5	5.00"	Bead-Loc, No Cover
WEL559-5456	15" x 14"	Wide 5	6.00"	Bead-Loc With Cover
WEL559-5465	15" x 14"	Wide 5	5.00"	Inner Bead-Loc With Cover
WEL559-5465NC	15" x 14"	Wide 5	5.00"	Inner Bead-Loc, No Cover

## Wide 5 HS Wheels

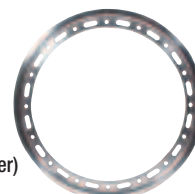
A very strong wheel originally designed for East Coast Modifieds, HS Wheels are made from .190" thick, 5052-H32 aluminum. Cold forged rim halves are lighter in the barrel, thicker at the bead seat and bolt flange where strength is needed most. Wheels have "Double-Wall" rim edges and 10 upset forged lug holes. No cut-in counter-sinks or steel inserts. Fully polished to a mirror-like finish.



Part No.	Size	Bolt Circle	Rear Spacing	Bead-Loc
WEL570-5013	15" x 10"	Wide 5	3.00"	None
WEL570-5015	15" x 10"	Wide 5	5.00"	None
WEL570-5053	15" x 10"	Wide 5	3.00"	Bead-Loc With Cover
WEL570-5055	15" x 10"	Wide 5	5.00"	Bead-Loc With Cover
WEL571-5215	15" x 12"	Wide 5	5.00"	None
WEL571-5225	15" x 12"	Wide 5	5.00"	Outer Bead-Loc
WEL571-5255	15" x 12"	Wide 5	5.00"	Bead-Loc With Cover
WEL571-5415	15" x 14"	Wide 5	5.00"	None
WEL571-5425	15" x 14"	Wide 5	5.00"	Outer Bead-Loc
WEL571-5455	15" x 14"	Wide 5	5.00"	Bead-Loc With Cover

## 15" Bead-Loc Rings

Part No.	Description
WELP650-5275 .....	15", 16-Hole Bolt-On Bead-Loc Ring (Slotted)
WELP650-5314 .....	15", Bolt-On Bead-Loc Ring With Quick Fastener Flange (No Cover)
WELP650-5315 .....	15", 16-Hole Bolt-On Bead-Loc Ring With Quick Fastener Mud Cover



## Mud Covers

Prevent mud from building up inside of wheels. Available with natural aluminum or black finish.

Part No.	Description
WELP650-4514A.....	Mud Cover, Natural, New Style
WELP650B-4514A.....	Mud Cover, Black, New Style <b>NEW!</b>



Larry Arndt

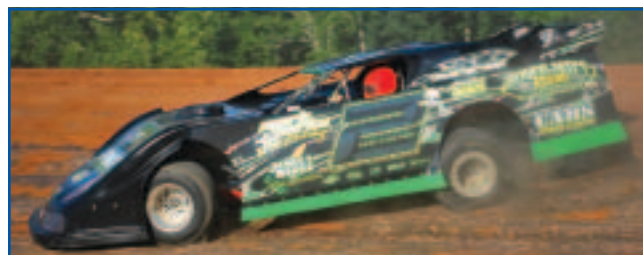


Cody Denny

Photos By: John Berglund



Damon Place



Justin Williams





## Steel Driveshafts



Steel driveshafts are 2" diameter and are offered in lengths from 29-1/2" to 39" long. The 29-1/2" to 33-1/2" long shafts, designed for IMCA/UMP dirt modifieds, are .083" wall, while the 35-1/2" and longer shafts, ideal for dirt late models, are .095" wall. All driveshafts are painted white to meet most track rules. Sold complete with Spicer U-joints. Slip yoke not included.

Part No.	Length	Part No.	Length
WDSS283295	29-1/2"	WDSS283330	33"
WDSS283300	30"	WDSS283335	33-1/2"
WDSS283305	30-1/2"	WDSS295355	35-1/2"
WDSS283310	31"	WDSS295380	38"
WDSS283315	31-1/2"	WDSS295385	38-1/2"
WDSS283320	32"	WDSS295390	39"
WDSS283325	32-1/2"		



Greg Socha

Photo By: Jim DenHamer

## WILSON MANIFOLDS™

### SB Chevrolet CNC-Ported Victor Intake Manifold WLS128250

Small block Chevy competition prepped manifold has CNC-blended, port-matched runners, and recontoured dividers and plenum areas for maximum out-of-the-box performance. Independent dyno tests showed increases of as much as 24 horsepower over an unmodified Edelbrock manifold. Manifold has been port matched to Fel-Pro FEL1206 intake gasket. Accepts square flange carburetor.



### Open And 4-Hole Carb Spacers

Aluminum carb spacers, designed for Holley 4150 models, increase low- and mid-range torque for circle track cars that spend a good deal of time at part throttle. Choose from open or NASCAR-legal four-hole style in lightweight hardcoated or economical SE Series.



Description	L/W Hardcoated Part No.	SE Series Part No.
Open Carb Spacer, 1/2" Tall	-	WLS000001
Open Carb Spacer, 1" Tall	WLS000010	WLS000011
Open Carb Spacer, 1-1/2" Tall	WLS000030	WLS000031
Open Carb Spacer, 2" Tall	WLS000050	WLS000051
4-Hole Carb Spacer, 1" Tall, 1.750" Bore, Holley 850 CFM	-	WLS011111
4-Hole Carb Spacer, 1" Tall, 1.680" Bore, Holley 750 CFM	-	WLS011311

## Carbon Fiber Driveshafts For Dirt Late Models *NEW!*



Race proven by Shannon Babb, Jimmy Owens and Billy Moyer, lightweight driveshafts are manufactured from 3-1/4" O.D. x .125" wall carbon fiber tube. Driveshafts include durable, forged 7075 aluminum yokes, permanent lube U-joints, precision balancing and rule legal white finish. Slip yoke not included.

Part No.	Length
WDSCF325355	35-1/2"
WDSCF325375	37-1/2"
WDSCF325380	38"

## Carbon Fiber Driveshafts *NEW!* For Modifieds And Crate Late Models



Ultra-lightweight driveshafts are well suited to IMCA/UMP modifieds or crate engine late models with up to 500 horsepower, and include 2-1/4" O.D. x .125" wall carbon fiber tube with forged, 7075 aluminum yokes and permanent lube U-joints. Approximately 1 lb. lighter than traditional steel units, carbon fiber driveshafts are precision balanced and include rule legal white finish. Slip yoke not included.

Part No.	Length	Part No.	Length
WDSCF225295	29-1/2"	WDSCF225380	38"
WDSCF225320	32"	WDSCF225385	38-1/2"
WDSCF225325	32-1/2"	WDSCF225390	39"
WDSCF225330	33"		

## Compound Angle Tapered Carb Spacer WLS003150



Similar to other Wilson spacers, mounting surface has compound angle to position the carburetor downward to the front and driver's side. Spacer is 2" tall and keeps 4150 series carburetors level on dirt late models where suspension is set to keep driver side front corner as high as possible for best traction. With spacer, jets stay submerged, preventing fuel starvation and power loss. Fits Holley 4150 4BBL applications.

## Tapered Carb Spacers



Spacers are CNC-machined from billet aluminum, then hardcoated. Computer generated variable radius tapers boost carburetor air flow by as much as 100 CFM for increased torque and throttle response throughout the RPM range and as much as 20 more horsepower.

Part No.	Description
WLS004110	.....Holley 4150 Series Spacer, 1" Tall
WLS004130	.....Holley 4150 Series Spacer, 1-1/2" Tall
WLS004150	.....Holley 4150 Series Spacer, 2" Tall
WLS014210	.....Holley 390 CFM (1.55" Bore) Spacer, 1" Tall

## 2300 2BBL Carb Adapters

Tapered CNC-machined aluminum adapter adapts Holley 2300 2BBL carb to manifolds with standard square flange. Tapered design allows efficient transition, preventing fuel mixture problems and improving air flow.

Part No.	Description
WLS044111	.....2300 2BBL Carb Adapter, 1" Tall
WLS044330	.....2300 2BBL Carb Adapter, 1-1/2" Tall





## 2BBL Racing Carburetors

Custom prepared for circle track racing, Holley 2BBL carburetors are offered in 350 and 500 CFM versions for gasoline or alcohol applications. Gauge legal 500 CFM carbs include 1-3/8" venturi and 1-11/16" throttle bores.

Part No.	Description
WCD44120	Gasoline 500 CFM 2BBL, Standard Holley Metering Block, Gauge Legal
WCD44121	Alcohol 500 CFM 2BBL, Externally Adj. A2 Metering Block, Gauge Legal
WCD44122	Gasoline 500 CFM 2BBL, External Adj. G4 Metering Block, Gauge Legal
WCD80787-2	Gasoline 350 CFM 2BBL, Stage 2, Stock Appearing And Custom Calibrated



## 4BBL Custom CNC Alcohol Carburetors

Custom CNC alcohol carburetors are based on Holley 750 CFM main bodies and use blue anodized, externally adjustable metering blocks, custom-sized venturii for different cubic inch engines, specially radiused air entries for maximum flow, throttle shaft lubrication holes, and screw-in air bleeds. Black epoxy powder coat finish resists corrosion.

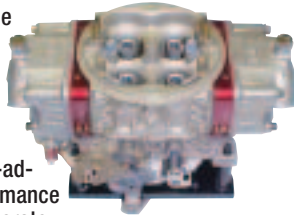
Part No.	Description
WCD64001	355-406 C.I. Engines
WCD64251	406-430 C.I. Engines



## GM "604" Crate Motor Carburetor

Dyno tested and tuned for use with the GM "604" small block Chevy 350 cu. in./400 horsepower crate motor. Carburetor uses a Holley HP main body, 750 baseplate assembly with stainless steel butterflies and bushed throttle shafts, and Willy's exclusive externally-adjustable metering blocks. A total performance package is also available for the "604" crate motor, which includes carburetor, spacer, stud kit, gaskets and spark plugs, that adds 22 dyno-proven horsepower.

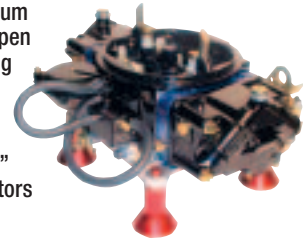
Part No.	Description
WCD50127	GM "604" Crate Motor Carburetor
WCD604CRATE	GM "604" Total Performance Package



## 4BBL Ultimate Slick Track Carburetors

"Slick Track" carburetors have vacuum secondaries that can be adjusted to open without a sudden power burst, keeping the rear tires "hooked up". Three adjustment positions let the racer easily tune the secondary opening rate for tracks that range from "tacky" to slick. Gasoline and alcohol carburetors are available.

Part No.	Description
WCD64011	Slick Track Alcohol Carburetor
WCD64012	Slick Track Gasoline Carburetor



## IMCA 650 CFM 4BBL HP Carburetor WCD62502

The most potent carburetor currently available for IMCA spec motor, gasoline carb delivers instant throttle response and more torque. Carburetor includes gloss black coated Holley HP 650 main body with 1.250" venturi, 750 base plate assembly with stainless steel butterflies, bushed throttle shafts, and Willy's exclusive, externally adjustable metering blocks.



## 4BBL HP Carburetors

Based on the Holley HP main body casting, the 4BBL HP features externally adjustable metering blocks, custom sized venturii screw-in air bleeds, gloss black powder coating, and an 850 CFM baseplate with stainless steel butterflies. Popular on late models.

Part No.	Description
WCD54001	Alcohol HP For 355-406 C.I. Engines
WCD54002	Gasoline HP For 355-406 C.I. Engines
WCD54251	Alcohol HP For 406-430 C.I. Engines
WCD54502	Gasoline HP For 406-430 C.I. Engines



## Adjustable Restrictor Plate WCD8850

For use with Holley 4150 series carburetors, 1" tall, shutter style plate fits between carburetor and intake manifold, enabling horsepower and torque to be custom tailored to track conditions. Billet aluminum plate is 1" tall and can be adjusted from 1.75" down to 1.00" .



## Specialized Carburetor Tools

Willy's offer a selection of one-of-a-kind tools designed for use in service and repair of Holley carburetors.

Part No.	Description
WCD3003	Float Adjusting Tool, Purple
WCD3004	Float Adjusting Tool, Red
WCD3300	Float Bowl/Jet Tool, Red
WCD3500	Power Valve Tester, Vacuum Pump Not Included



## Birdcage Indexing Tool **NEW!**

Tool makes a once tedious process easy. Tool slips over birdcage bolts and allows use of a digital protractor to determine the exact angle of the birdcage. Invaluable for racers and chassis builders. Digital protractor (ALL10742) is sold separately.

Part No.	Description
WCDBC12	Birdcage Tool For 1/2" Bolt
WCDBC58	Birdcage Tool For 5/8" Bolt
WCDBC34	Birdcage Tool For 3/4" Bolt





## Billet Superlite 4 And 4/ST Lug Mount Calipers

Featuring 3.50" centered lug mount with four pistons, the SL4 caliper is compatible with all wide 5 and 5x5 style hubs. It has stainless steel or multi-part Thermlock pistons, SRS bridge wear plates, recessed crossover tubes and bleed screws. Rear mount applications only. Use 7420 type pads.



Part No.	Piston Diameter	Rotor Thickness	Mount	Piston	Crossover Tube	Bleed Screw Kit	Self-Bleed Tube	Square Ring Kit	Pad Type
<b>Superlite 4/ST With Stainless Steel Pistons</b>									
WIL120-7568-RS	1.88"/1.75"	1.25"	Right Rear	-	WIL190-5975	WIL220-6069	WIL190-8310	WIL130-2427	7420
WIL120-7569-RS	1.88"/1.75"	1.25"	Left Rear	-	WIL190-5975	WIL220-6069	WIL190-8310	WIL130-2427	7420
<b>Superlite 4/ST With Thermlock Pistons</b>									
WIL120-7570-RS	1.88"/1.75"	1.25"	Right Rear	WIL200-7550/WIL200-7551	WIL190-5975	WIL220-6069	WIL190-8310	WIL130-2427	7420
WIL120-7571-RS	1.88"/1.75"	1.25"	Left Rear	WIL200-7550/WIL200-7551	WIL190-5975	WIL220-6069	WIL190-8310	WIL130-2427	7420

## Forged Billet Superlite (FSL) Calipers

Forged billet Superlite (FSL) includes stainless steel bridge plates, stainless steel or Thermlock pistons, and high temp, square-faced o-ring seals. Specify right (R) or left (L) when ordering. Use 7420 type pads.



Part No.	Piston Dia.	Rotor Thickness	Piston	Bleed Screw Kit	Bridge Bolt Kit	Square Ring Kit	Pad Type
<b>Standard Piston Bore/Stainless Steel Pistons</b>							
WIL120-11125	1.12"	.810"	-	WIL220-6069	WIL230-7539	WIL130-2579	7420
WIL120-11126	1.25"	.810"	WIL200-7514	WIL220-6069	WIL230-7539	WIL130-2479	7420
WIL120-11127	1.25"	1.25"	WIL200-7514	WIL220-6069	WIL230-7541	WIL130-2479	7420
WIL120-11128	1.38"	.810"	WIL200-7516	WIL220-6069	WIL230-7539	WIL130-2658	7420
WIL120-11130	1.38"	1.25"	WIL200-7516	WIL220-6069	WIL230-7541	WIL130-2658	7420
WIL120-11134	1.75"	.810"	WIL200-7531	WIL220-6069	WIL230-7539	WIL130-2655	7420
WIL120-11134-SI	1.75"	.810"	WIL200-7531	WIL220-6069	WIL230-7539	WIL130-2655	7420
WIL120-11135	1.75"	1.10"	WIL200-7531	WIL220-6069	-	WIL130-2655	7420
WIL120-11136	1.75"	1.25"	WIL200-7531	WIL220-6069	WIL230-7541	WIL130-2655	7420
<b>Differential Piston Bore/Stainless Steel Pistons</b>							
WIL120-11329 (RH)	1.88"/1.75"	1.25"	WIL200-7531 (1.75")	WIL220-6069	WIL230-7541	WIL130-2427	7420
WIL120-11330 (LH)	1.88"/1.75"	1.25"	WIL200-7531 (1.75")	WIL220-6069	WIL230-7541	WIL130-2427	7420
<b>Differential Piston Bore/Thermlock Pistons</b>							
WIL120-11331 (RH)	1.88"/1.75"	1.25"	WIL200-7550/WIL200-7551	WIL220-6069	WIL230-7541	WIL130-2427	7420
WIL120-11332 (LH)	1.88"/1.75"	1.25"	WIL200-7550/WIL200-7551	WIL220-6069	WIL230-7541	WIL130-2427	7420

\* SI designates side inlet.

## Forged Billet DynaPro Lug Mount Calipers

Designed for applications that previously used Dynalite model brake calipers. DynaPro calipers are stress-flow forged for exceptional strength and include a wide array of improvements. Calipers feature Quick-E-Clip pad retainers, which eliminate the need for caliper removal when replacing pads, while the heavy wall stainless steel pistons slow heat transfer and resist corrosion. Internal fluid passages and four corner bleed screws allow mounting in front, rear, left or right position. Use 7812 type pads.



Part No.	Piston Diameter	Rotor Thickness.	Piston	4 Pc. Bleed Screw Kit	4 Pc. Square Ring Kit	Pad Type
WIL120-9691	1.75"	1.25"	WIL200-7528	WIL220-0627	WIL130-2655	7812
WIL120-9692	1.75"	1.00"	WIL200-7528	WIL220-0627	WIL130-2655	7812
WIL120-9693	1.75"	.81"	WIL200-7528	WIL220-0627	WIL130-2655	7812
WIL120-9693-SI*	1.75"	.81"	WIL200-7528	WIL220-0627	WIL130-2655	7812
WIL120-9695	1.75"	.38"	WIL200-7528	WIL220-0627	WIL130-2655	7812
WIL120-9703	1.38"	.81"	WIL200-7518	WIL220-0627	WIL130-2658	7812

\* Signifies side inlet which include addition of center bridge bolts.

## Forged Narrow Mount Dynalite Calipers **NEW!**

Ideal for late models or modifieds, exceptionally rigid, FNLD calipers are engineered to reduce deflection, while the resulting decrease in fluid volume displacement translate to increasing clamping efficiency and less pedal travel. A direct replacement for all previous NDL calipers and similar units with 3.50" centered mounting tabs. Calipers require 7816 type brake pads.



Part No.	Piston Dia.	Rotor Thickness	Piston	Square Ring Kit	Bleed Screw Kit	Body Seal	Bridge Bolt Kit	Pad Type
WIL120-11571	1.75"	.380"	WIL200-7531	WIL130-2655	WIL220-0627	WIL130-10540	WIL230-9982	7816
WIL120-11571-SI*	1.75"	.380"	WIL200-7531	WIL130-2655	WIL220-0627	WIL130-10540	WIL230-9982	7816
WIL120-11572	1.75"	.810"	WIL200-7531	WIL130-2655	WIL220-0627	WIL130-10540	WIL230-9983	7816
WIL120-11572-SI*	1.75"	.810"	WIL200-7531	WIL130-2655	WIL200-0627	WIL130-10540	WIL230-9983	7816
WIL120-11573	1.75"	1.25"	WIL200-7531	WIL130-2655	WIL200-0627	WIL130-10540	WIL230-10116	7816
WIL120-11574	1.38"	.380"	WIL200-7516	WIL130-2658	WIL200-0627	WIL130-10540	WIL230-9982	7816
WIL120-11575	1.38"	.810"	WIL200-7516	WIL130-2658	WIL200-0627	WIL130-10540	WIL230-9983	7816
WIL120-11576	1.38"	1.25"	WIL200-7516	WIL130-2658	WIL200-0627	WIL130-10540	WIL230-10116	7816

\* Signifies side inlet.



## Forged Billet Dynalite Calipers

Extensive testing has shown that the strength of forged billet yields a more efficient caliper requiring less pedal travel. Forged billet Dynalite Calipers include SRS stainless steel bridge plates to prevent wear and pad rattle and may be mounted in any front, rear, right or left position. Use 7112 type pads.



Part No.	Piston Diameter	Rotor Thickness	Piston	4-Pc. Bleed Screw Kit	4-Pc. Square Ring Kit	Body Seal	Pad Type
WIL120-6804	1.38"	1.25"	WIL200-7518	WIL220-0627	WIL130-2658	WIL210-2582	7112
WIL120-6805	1.38"	1.00"	WIL200-7518	WIL220-0627	WIL130-2658	WIL210-2582	7112
WIL120-6806	1.38"	.810"	WIL200-7518	WIL220-0627	WIL130-2658	WIL210-2582	7112
WIL120-6808	1.38"	.380"	WIL200-7518	WIL220-0627	WIL130-2658	WIL210-2582	7112
WIL120-6814	1.75"	1.25"	WIL200-7528	WIL220-0627	WIL130-2655	WIL210-2582	7112
WIL120-6815	1.75"	1.00"	WIL200-7528	WIL220-0627	WIL130-2655	WIL210-2582	7112
WIL120-6816	1.75"	.810"	WIL200-7528	WIL220-0627	WIL130-2655	WIL210-2582	7112
WIL120-6818	1.75"	.380"	WIL200-7528	WIL220-0627	WIL130-2655	WIL210-2582	7112

## GM III Calipers

The GM III aluminum caliper is a result of the latest design and manufacturing to produce the most rigid, high torque lightweight caliper. The real strength comes from its exclusive triple bridge configuration, which provides a tremendous increase in clamping force over other twin bridge calipers. Efficient designs further maximize weight savings: Material is properly placed to fortify all load bearing points and any material not contributing to strength is eliminated for weight reduction, resulting in a caliper that weighs just over three pounds. Use D52 style pad sets.



Part No.	Piston Diameter	Rotor Thickness	4-Pc. Bleed Screw Kit	4-Pc. Square Ring Kit	Pad Type
WIL120-5288	2.75"	.810"	WIL220-0627	WIL130-4955	D52
WIL120-5289	2.75"	1.250"	WIL220-0627	WIL130-4955	D52
WIL120-5343	2.38"	.810"	WIL220-0627	WIL130-4956	D52
WIL120-5344	2.38"	1.250"	WIL220-0627	WIL130-4956	D52
WIL120-5861	2.75"	1.000"	WIL220-0627	WIL130-4955	D52

## GM Metric Calipers

GM metric racing calipers represent the latest refinements in caliper design and manufacturing through computer-based solid modeling and stress simulation programs. Aluminum calipers are a direct replacement for the 1978 and later D154 type GM metric calipers. Weighing a mere 2.97 pounds each, they offer a substantial weight savings over stock cast iron calipers. Use D154 style pad sets.



Part No.	Piston Diameter	Rotor Thickness	4-Pc. Bleed Screw Kit	4-Pc. Round O-Ring Kit	Pad Type
WIL120-6426	2.38"	.81"	WIL220-0627	WIL130-4956	D154
WIL120-6427	2.38"	1.25"	WIL220-0627	WIL130-4956	D154
WIL120-7197	2.38"	1.00"	WIL220-0627	WIL130-4956	D154

## Iron GM Metric Calipers

Ideal for hobby and factory stock classes, cast iron calipers are bolt-on replacements for 1978-up GM units and offer modern machining and new part quality. Available with undersize (2.00") or oversize (2.75") stainless steel pistons for easy brake bias adjustment, calipers accept standard GM D154 brake pads. Special bleed screw and inlet fitting provisions allow use on right or left side. #WIL230-0619 caliper pin slide bolts are required for installation. Use D154 style pad sets.



Part No.	Description	Piston Diameter	Rotor Thickness	Caliper Bolt Kit	Pad Type
WIL120-8924	Oversize GM Metric Caliper	2.75"	1.00"	WIL230-0619	D154
WIL120-9333	Undersize GM Metric Caliper	2.00"	1.00"	WIL230-0619	D154

## Caliper Fittings

Premium quality Caliper Fittings are designed to fit and work the first time, every time.

**Part No.**      **Description**  
 WIL220-0627 ....Bleed Screw Assembly, 1/8"-27 (4-Pack)  
 WIL220-0628 ....Tube Adapter (4-Pack)



## Caliper Bolt WIL230-0542

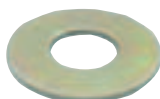
Sliding bolts fit GM calipers. The 7/16"-14 bolts are sold individually.



## Caliper Shims

Use shims to adjust calipers for proper rotor positioning and clearance. Sold in packs of 10.

**Part No.**      **Description**  
 WIL240-4384 ..... 0.032" Thick, 3/8" I.D. Hole  
 WIL240-4385 ..... 0.032" Thick, 7/16" I.D. Hole  
 WIL240-4386 ..... 0.063" Thick, 7/16" I.D. Hole  
 WIL240-4387 ..... 0.015" Thick, 7/16" I.D. Hole



Jeff Morse

Photo By: Doug Swift



## PolyMatrix Brake Pads

Wilwood has many types of brake pad compounds designed specifically for racing. It is important to analyze braking requirements and select the proper pads. Experimentation is often necessary to determine the correct compound for a particular application.

### PolyMatrix "A" Compound

**Heat Range: Low to X-High, Torque: X-High**

"A" compound delivers an immediate cold response with the highest friction values at all temperatures. Engineered for severe duty oval track race applications which require immediate high response at low temperatures.

### PolyMatrix "B" Compound

**Heat Range: High, Torque: High**

With quick warm-up, high friction and fade free performance at high temperatures, "B" is the best choice for sprints on pavement or dirt tracks with extreme braking.

### BP-10 ("Smart Pads") Compound

**Heat Range: Medium to High, Torque: Light to Medium**

A medium to high temp compound, low dust characteristics and the low temperature response of a street pad. Use on dirt track cars with vented iron rotors, club sport and track day racers.

### PolyMatrix BP-20 ("Smart Pads") Compound

**Heat Range: Medium to X-High, Torque: Light to Medium**

Provides increased friction levels with extended temperature range over BP-10. Ideal for heavy braking on dirt tracks, and hobby and sportsman asphalt racing.

### PolyMatrix BP-30 ("Smart Pads") Compound

**Heat Range: Medium to X-High, Torque: Light to Medium**

Long wearing pad in the middle temperature ranges with moderate wear in sustained high heat conditions. Works well on hard braking dirt late models, DIRT modifieds and as a proven workhorse on asphalt late models, modifieds and sportsman.

### PolyMatrix "E" Compound

**Heat Range: Medium to High, Torque: Medium to High**

A proven "Million Dollar" winner and the first choice for all types of dirt racing. "E" has immediate cold response, with consistent torque and pedal response through the entire temperature range. "E" has smooth engagement for finesse driving on slick tracks, with plenty of stopping power right from the start.

### PolyMatrix "H" Compound

**Heat Range: Low to X-High, Torque: High to X-High**

Slightly softer initial response than "A" compound with the same high temperature friction. Severe duty compound has long wear characteristics and works well on oval track applications. Delivers smooth, consistent engagement at all temperatures and pedal pressures.

### PolyMatrix "Q" Compound

**Heat Range: Low to Medium, Torque: Medium**

Ceramic-enhanced compound is ideally suited for aluminum rotors. Provides smooth engagement, long service life, quick recovery and high fade resistance.

## PolyMatrix Brake Pad Chart (Axle Sets, 4 Pads Per Set)

Caliper Type	Pad Type	"A" Compound	"B" Compound	"BP-10" Compound	"BP-20" Compound	"BP-30" Compound	"E" Compound	"H" Compound	"Q" Compound
GM/Howe	D52	WIL15A-5737K	WIL15B-3994K	-	-	-	WIL15E-6102K	WIL15H-8232K	-
GM/Metric	D154	WIL15A-6219K	WIL15B-3998K	WIL150-8936K	-	-	WIL15E-6103K	-	-
Billet Dynalite Single	6812	WIL15A-10142K	WIL15B-9819K	WIL150-9764K	-	-	WIL15E-9820K	-	WIL15Q-10144K
Dynalite (Cotter Pin)	7112	WIL15A-5734K	WIL15B-3991K	WIL150-8850K	-	-	WIL15E-6096K	WIL15H-8291K	WIL15Q-6824K
Billet Dynapro Lug Mount	7812	WIL15A-9835K	WIL15B-9836K	WIL150-9136K	-	-	WIL15E-9837K	-	-
Superlite II, III	7320	WIL15A-5735K	WIL15B-3992K	WIL150-8856K	-	-	WIL15E-6100K	WIL15H-8108K	-
Superlite 6 And Forged S/L	7420	WIL15A-5938K	WIL15B-5939K	WIL150-8854K	-	WIL150-9864K	WIL15E-6084K	WIL15H-8114K	WIL15Q-6829K
GN II, GN III, ST	7520	WIL15A-5736K	WIL15B-3993K	-	-	-	-	-	-
Billet Dynapro Narrow Mount	7816	WIL15A-7263K	WIL15B-7264K	WIL150-8946K	WIL150-9419K	WIL150-9865K	WIL15E-7266K	-	-

### Pad Types



Lee Price

Photo By: John Berglund



Tim Thurston

Photos By: Dennis Woods



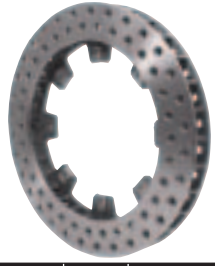
### Ultralight 32 Vented Rotors

Ultralight Rotors are the popular choice for dirt track and lighter duty pavement racing. Premium grade, long grain carbon iron provides excellent thermal stability, long life, and resistance to heat checking. UL-32 rotors are available with straight or directional vanes for improved cooling.



### UL-32 Straight Vane Rotors

Part No.	Rotor Thk.	Rotor Dia.	No. of Mt. Holes	Hole Type	Bolt Circle	Weight
WIL160-0277	.81"	12.19"	8	.325"	7.00"	8.9 lbs.
WIL160-0471	.81"	11.75"	8	.325"	7.00"	8.1 lbs.
WIL160-0483	1.25"	11.75"	8	.325"	7.00"	8.8 lbs.
WIL160-0789	1.25"	11.75"	10	.325"	6.81"	9.5 lbs.
WIL160-0790	.81"	11.75"	10	.325"	6.81"	9.1 lbs.
WIL160-3747	.75"	10.25"	6	.325"	5.50"	6.1 lbs.
WIL160-5840	.81"	11.00"	6	.325"	6.25"	7.9 lbs.
WIL160-5844	.81"	12.19"	8	5/16"-24	7.62"	8.8 lbs.



### ULD-32 Drilled Straight Vane Rotors

Part No.	Rotor Thk.	Rotor Dia.	No. of Mt. Holes	Hole Type	Bolt Circle	Weight
WIL160-5863	.81"	11.75"	8	.325"	7.00"	7.2 lbs.
WIL160-5864	1.25"	11.75"	8	.325"	7.00"	7.7 lbs.
WIL160-5865	.81"	12.19"	8	.325"	7.00"	8.0 lbs.



### ULS-32 Scalloped Straight Vane Rotors

Part No.	Rotor Thk.	Rotor Dia.	No. of Mt. Holes	Hole Type	Bolt Circle	Weight
WIL160-8135	.81"	11.75"	8	.325"	7.00"	5.4 lbs.
WIL160-8136	.81"	12.19"	8	.325"	7.00"	5.9 lbs.
WIL160-8343	1.25"	11.75"	8	.325"	7.00"	5.8 lbs.
WIL160-8814	1.25"	11.75"	8	.325"	7.00"	6.7 lbs.



### UL-32 Directional Vane Rotors

Part No.	Mount	Rotor Thk.	Rotor Dia.	No. of Mt. Holes	Hole Type	Bolt Circle	Weight
WIL160-2894	RH	1.25"	12.19"	8	.325"	7.00"	10.5 lbs.
WIL160-2895	LH	1.25"	12.19"	8	.325"	7.00"	10.5 lbs.
WIL160-2898	RH	1.25"	11.75"	8	.325"	7.00"	9.6 lbs.
WIL160-2899	LH	1.25"	11.75"	8	.325"	7.00"	9.6 lbs.
WIL160-2900	RH	1.25"	12.19"	8	5/16"-24	7.62"	10.1 lbs.
WIL160-2901	LH	1.25"	12.19"	8	5/16"-24	7.62"	10.1 lbs.

### GT-36/GT-48 Series Directional Vane Rotors

Superior heat absorption and dissipation make GT-36/GT-48 rotors ideal for professional motorsports. Cast from premium carbon iron for thermal stability, resistance to distortion and extended life.



Part No.	Mount	Rotor Thk.	Rotor Dia.	No. of Mt. Holes	Hole Type	Bolt Circle	Weight
WIL160-11839	RH	1.25"	12.19"	8	.313"	7.00"	12.7 lbs.
WIL160-11840	LH	1.25"	12.19"	8	.313"	7.00"	12.7 lbs.
WIL160-4564	RH	1.25"	12.90"	12	.251"	8.75"	11.7 lbs.
WIL160-4565	LH	1.25"	12.90"	12	.251"	8.75"	11.7 lbs.
WIL160-11837	RH	1.25"	11.75"	8	.313"	7.00"	10.9 lbs.
WIL160-11838	LH	1.25"	11.75"	8	.313"	7.00"	10.9 lbs.
WIL160-12293	RH	.810"	12.19"	8	.325"	7.62"	9.3 lbs.
WIL160-12294	LH	.810"	12.19"	8	.325"	7.62"	9.3 lbs.

### HD Series Rotors

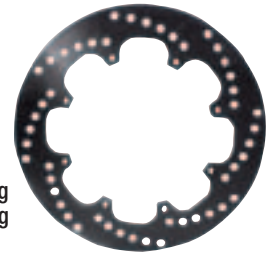
Ideal for asphalt late models, modifieds and other open wheel race cars, HD Series Rotors are exceptionally stable and durable. Long grain, carbon iron rotors have directional cooling vanes for superior heat absorption and dissipation.



Part No.	Mount	Rotor Thk.	Rotor Dia.	No. of Mt. Holes	Hole Type	Bolt Circle	Weight
WIL160-3846	RH	1.25"	11.75"	8	.313"	7.00"	10.9 lbs.
WIL160-3847	LH	1.25"	11.75"	8	.313"	7.00"	10.9 lbs.
WIL160-11835	RH	1.25"	12.19"	8	.313"	7.00"	12.7 lbs.
WIL160-11836	LH	1.25"	12.19"	8	.313"	7.00"	12.7 lbs.

### Drilled Steel Rotors

High strength steel alloy rotors have greater strength and resistance to warping and are drilled to reduce rotating unsprung weight.



Part No.	Rotor Thk.	Rotor Dia.	No. of Mt. Holes	Hole Type	Bolt Circle	Weight
WIL160-0495	.31"	12.00"	8	5/16"-24	7.62"	4.6 lbs.
WIL160-0525	.35"	12.00"	8	.325"	7.00"	5.4 lbs.

### Rotor Bolt Kits

Bolt kits fasten rotors to hubs or hats. All bolts are lock wire drilled.



Part No.	Description
WIL230-0150	Socket Head, Threaded Rotors, (8) 5/16"-24 x .750"
WIL230-0526	Hex Head, Wide 5/Threaded Hats, (8) 5/16"-18 x 1.00" (Not Lock Wire Drilled)
WIL230-4572	Stainless Steel, GT Hats, (12) 1/4"-20 x 1.00"
WIL230-5567	Dynamic Mount Kit, Live Axle Rotor Clamp, (8) 5/16"-24 x 1.25" Bolts & Crimp Nuts
WIL230-6710	12-Pt. Head, GT Hats, 5 x 5 Hub Plate, (8) 5/16"-24 x .810"



## HP Racing Rotors For OE Spindles **NEW!**

Designed exclusively for classes restricted to OE style components including spec. modifieds, street stocks and other hobby classes, rotors are cast from a proprietary iron alloy to offer the strongest, most reliable assemblies currently available. Approved by IMCA, UMP, USCS and USMTS, purpose built castings provide maximum strength in the high stress and high load areas. Rotors are fully machined and fitted with bearing races and 5/8" coarse thread studs on a 5 x 5" bolt circle. Hub installation kits are also available, complete with inner and outer wheel bearings, hub seal, spindle nut, tab washer, cotter pin and dust cap.

Part No.	Description
WIL160-9239	GM Metric Rotor, 1978-Up, 10.50" Dia. x 1.00" Thick
WIL160-9240	Pinto/Mustang II Rotor, 1974-80, 10.15" Dia. x .810" Thick
WIL370-9537	Hub Installation Kit For WIL160-9239 Rotor
WIL370-9545	Hub Installation Kit For WIL160-9240 Rotor



## Starlite "55" Wide 5 Racing Hubs

Aluminum hubs are light and exceptionally strong. Natural or corrosion resistant black finish.

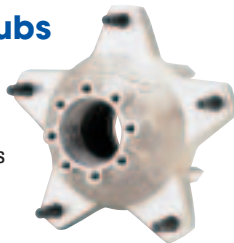
Part No.	Application	Offset	Finish	Studs
WIL270-6513C	5-Bolt Rear	Standard	Aluminum	5/8" Coarse
WIL270-6513D	5-Bolt Rear	Standard	Aluminum	5/8" Coarse/Drilled
WIL270-6513BD	5-Bolt Rear	Standard	Black	5/8" Coarse/Drilled
WIL270-6735C	Snap-Cap Front	Standard	Aluminum	5/8" Coarse
WIL270-6735D	Snap-Cap Front	Standard	Aluminum	5/8" Coarse/Drilled
WIL270-6735BD	Snap-Cap Front	Standard	Black	5/8" Coarse/Drilled



## Starlite Wide 5 Racing Hubs

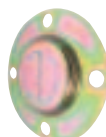
Traditional 8-bolt Hubs are now available in standard offset for fixed mount calipers and GM offset for floating calipers.

Part No.	Description
WIL270-1956C	Standard Offset Hub, 7.4 Pounds
WIL270-1957C	GM Offset Hub, 7.4 Pounds



## Front Hub Caps

Part No.	Description
WIL270-0374	Lightweight Steel Hubcap, Starlite Hubs
WIL270-6913	Snap-Cap Composite Hubcap, Starlite "55" Hubs
WIL270-9498	Lightweight 5 Bolt
WIL211-6950	Snap-Cap Replacement O-Ring



## Drive Flanges

High-strength 7075 billet aluminum flanges are splined to fit Allstar or similar-style axles.

Part No.	Description
<b>5-Bolt Drive Flanges For Starlite "55" Hubs</b>	
WIL270-6732	Standard Drive Flange With Bolts, Black
WIL270-6733	Lightweight Drive Flange With Bolts, Silver
WIL270-6918	Dust Cap For 5-Bolt
<b>8-Bolt Drive Flanges For Starlite Hubs</b>	
WIL230-1378	Mount Bolt Kit, 8-Pack (Drilled For Safety Wire)
WIL270-2265	Dust Cap For 8-Bolt
WIL270-2290	Gold Anodized Flange
WIL270-2290B	Black Anodized Flange
WIL270-2290R	Red Anodized Flange
WIN5144	Flange Gasket



## Wheel Bearings/Seals

Bearings and seal kits can be used with the Starlite, Starlite "55", and most other brands of Wide 5 Hubs.

Part No.	Description
WIL370-0563	Bearings And Seal kit
WIL370-6885	Bearings, Seal And Locknut Kit



## Studs

Studs are 5/8" diameter and will stand up to the most punishing race conditions. Studs have .680" knurl diameter to fit Wilwood Wide 5 hubs. Sold individually.

Part No.	Description
WIL230-0304	5/8" Dia., Fine Thread
WIL230-0510	5/8" Dia., Coarse Thread
WIL230-10990	5/8" Dia., Drilled For Wide 5 Hubs



## Wheel Spacer WIL270-2189C

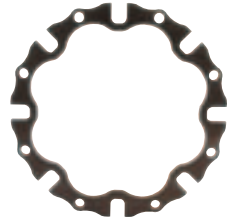
Eliminates the expense of stocking multiple wheel offsets. Provides 2" positive wheel offset for fine tuning of chassis. Triangulated for maximum strength and rigidity and 50% lighter than other wheel spacers, 4 lbs. total weight. Coarse 5/8" studs are included.



## Wide 5 Racing Hub Dynamic Rotor Mount System

"Floating" rotor mounts eliminate damaging heat related stresses at the rotor mount tabs and bolt stands. Different thermal expansion rates of iron and aluminum distort rotors, causing uneven pad build-up, excessive rotor wear, and pulsing pad knock-back. The high strength steel mounting plates bolt solidly to the hubs with specialized mounting bolts and "T"-nuts. Use with any eight on 7.00" bolt pattern rotors with 5/16" bolt holes.

Part No.	Description
WIL300-8431	Rotor Mounting Plate For Machined Wide 5 Hubs, Each
WIL270-8434C	Starlite "V" Wide 5 Hub, 8-Bolt, Bolt-On Cap, Standard 5/8"-11 Studs
WIL270-8435C	Starlite "55" Wide 5 Rear Hub, 5-Bolt, Std. 5/8"-11 Studs
WIL270-8436C	Starlite "55" Wide 5 Front Hub, 5-Bolt, Snap-Cap, Standard 5/8"-11 Studs
WIL230-8454	Rotor Bolt Kit, Rotor To Plate, Lock Wire Drilled With AN Washers, Includes Parts For One Rotor



## Residual Pressure Valves

Valves prevent fluid drain-back in systems where master cylinder is mounted below floor. Also prevent excessive piston retraction in disc brake systems for firmer pedal and reduced pedal travel. Aluminum housing is tapped for 1/8" NPT on inlet and outlet for easy installation. Use 2 lb. valve for disc brakes and 10 lb. for drum brakes. Includes 1/8" NPT inlet and outlet ports and 1/8" NPT to 3/8"-24 brake line adapters.

Part No.	Description
WIL260-1874	2 lb. Blue, Disc Brakes
WIL260-1876	10 lb. Red, Drum Brakes
WIL260-3278	2 lb. Blue, With Fittings
WIL260-3279	10 lb. Red, With Fittings



## Knob Style Proportioning Valve WIL260-8419

Improved valve features a fine thread adjuster for precise pressure adjustments from 100-1,000 PSI. Unit can deliver up to 57% reduction in line pressure, the highest of any proportioning valve currently available. Compact, lightweight assembly has 1/8"-27 NPT ports and dual mounting holes. May be used to adjust front to rear, side to side or single wheel brake bias.





## Lever Style Proportioning Valve WIL260-8420

Adjustable valve delivers precise pressure, 100 to 1,000 PSI. Compact, forged aluminum valve can reduce in line pressure by as much as 57% at full release. Easily mounted with two .250" dia. holes on 1.00" centers. Includes 1/8" NPT inlet and outlet ports and 1/8" NPT to 3/8"-24 brake line adapters.



## Pedal Assemblies

A non-slip pad is installed on each pedal, and both the pedal and base are coated with a corrosion-proof finish. A spherical pivot bearing in the center of the bar and superior balance bar and clevis insure proper pushrod alignment.

WIL340-11295



Part No.	Description
<b>Single Pedal/Dual Master Cylinder Assemblies</b>	
WIL340-1285	Floor Mount Brake Pedal, Forward Mount M/C, 6:1 Ratio, 10.24"
WIL340-1287	Swing Mount Brake Pedal, Forward Mount M/C, 7:1 Ratio, 12.65"
WIL340-5180	Swing Mount Brake Pedal, Rev. Mt. Dual M/C, 5.1:1 Ratio, 10.02"
WIL340-5181	Swing Mount Brake Pedal, Rev. Mt. Dual M/C, 6.25:1 Ratio, 11.71"
WIL340-11295	Swing Mount Assembly, Forward Mount M/C, 6.25:1 Ratio, 12.05"
WIL340-11299	Swing Mount Assembly, Reverse Mount M/C, 6.25:1 Ratio, 11.89"
<b>Dual Pedal/Triple Master Cylinder Assemblies</b>	
WIL340-3342	Swing Mount Assembly, Reverse Mount M/C, 6.25:1 Ratio, 11.71"
WIL340-3950	Swing Mount Assembly, Forward Mount M/C, 6.25:1 Ratio, 11.88"
WIL340-4828	Swing Mount Assembly, Reverse Mount M/C, 5.1:1 Ratio, 10.02"
<b>Replacement Components</b>	
WIL340-1757	Balance Bar Assembly Only

## Remote Brake Bias Adjuster WIL340-4990

When used with a balance bar, unit allows front-to-rear brake bias to be adjusted to suit changing racing conditions. Bright blue knob includes special detent control for easy driver adjustment. Sold complete with 5' cable, housing and two label faces for front-to-rear or rear-to-front adjustments. Unit has 3/8"-24 threads to fit Wilwood and most popular brake balance bars.



## Pedal Remote Master Cylinder Mount WIL340-4630 **NEW!**

Ideal for dirt modifieds where the master cylinder must be mounted in a remote location due to space constraints. Cast aluminum housed unit is typically mounted to the left side chassis rail and includes a balance bar to control two standard mount master cylinders with remote mounted reservoirs. Unit weighs just 1.8 lbs. and is sold complete with adjuster knob.



## Single Clutch Pedal Assembly

Wilwood's single pedal assembly may be used for single master cylinder applications, or as a clutch pedal. It's available in swing mount and floor mount configurations and is built for strength and light weight.

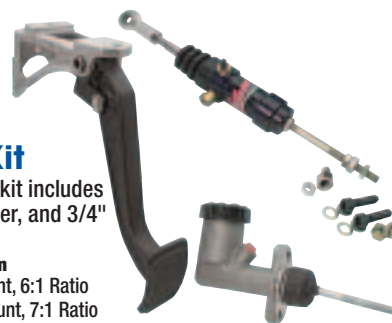
Part No.	Description
WIL340-1289	Floor Mount Clutch Pedal, 6:1 Ratio
WIL340-1290	Swing Mount Clutch Pedal, 7:1 Ratio
WIL330-1346	Clutch Clevis Only



## Clutch Pedal Kit

Lightweight clutch pedal kit includes pedal/bracket, slave cylinder, and 3/4" bore master cylinder.

Part No.	Description
WIL340-1469	Floor Mount, 6:1 Ratio
WIL340-1470	Swing Mount, 7:1 Ratio



## Slave Cylinder WIL260-1333

Aluminum slave cylinder's pull rod has longer travel for full release of clutch and a 7/8" bore x 1.25" stroke.

### Replacement Component

Part No.	Description
WIL260-5524	Slave Cylinder Rebuild Kit



## Combination Master Cylinder Kits

Offering four combinations, the compact, lightweight master cylinder, with small or large reservoir, may be remotely or directly mounted with up to 2" additional clearance between flange and outlet. Close tolerance cut-off and equalization ports assure immediate activation and heavy return springs offer smooth operation and quick release.



Description	Master Cylinder Kit Part No.	Rebuild Kit Part No.
5/8" Bore Master Cylinder	WIL260-10371	WIL260-10513
3/4" Bore Master Cylinder	WIL260-10372	WIL260-10514
7/8" Bore Master Cylinder	WIL260-10374	WIL260-10516
1" Bore Master Cylinder	WIL260-10375	WIL260-10517

## Combination Remote Master Cylinder Kits

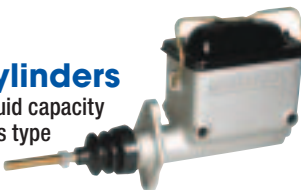
Each kit includes master cylinder with 3/8"-24 UNF outlets, large (10.7 oz.) and small (4.0 oz.) reservoirs, remote mounting bracket, remote inlet adapter, remote hose, reservoir cap and hardware.



Description	Master Cylinder Kit Part No.	Rebuild Kit Part No.
5/8" Master Cylinder Kit, 1.3" Stroke	WIL260-3372	WIL260-3880
3/4" Master Cylinder Kit, 1.1" Stroke	WIL260-3374	WIL260-3881
7/8" Master Cylinder Kit, 1.2" Stroke	WIL260-3376	WIL260-3882
1" Master Cylinder Kit, 1.0" Stroke	WIL260-3378	WIL260-3883
1-1/8" Master Cylinder Kit, 1.0" Stroke	WIL260-3380	-

## High Volume Aluminum Master Cylinders

Master cylinders have 26% more fluid capacity and include formed steel lids, bellows type gaskets, internal slosh baffles, and standard mounting dimensions.



Description	Master Cylinder Part No.	Rebuild Kit Part No.	Replacement Lid And Gasket
3/4" Bore Master Cylinder	WIL260-6764	WIL260-6898	WIL330-7085
7/8" Bore Master Cylinder	WIL260-6765	WIL260-6899	WIL330-7085
1" Bore Master Cylinder	WIL260-6766	WIL260-6900	WIL330-7085