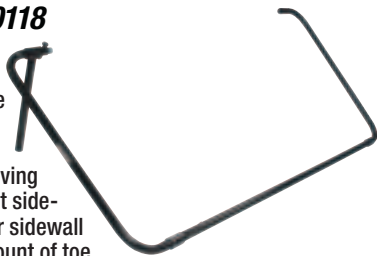




tools and accessories

Toe Gauge ALL10118

Check toe quickly and easily. New design allows one person operation and the ability to check front and rear toe dimension from the front of the car without removing tool. Adjust stop against front sidewall of tires, slide tool to rear sidewall and the difference is the amount of toe out. Tool adjusts to measure from 49" to a maximum width of 89".



Bead Breakers

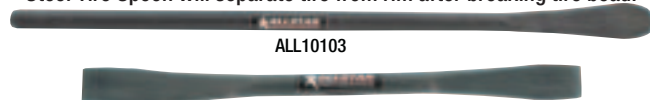
Convenient tools make quick work of breaking down even the most stubborn tire beads. Durable steel construction with rubber hand grips. Wide jaw bead breaker works well with soft sidewall tires. For use with 15" wheels.

Part No. Description
ALL10105.....Standard
ALL10106.....Wide Jaw



Tire Spoons

Steel Tire Spoon will separate tire from rim after breaking tire bead.



Part No. Description
ALL10103.....Straight, 24" Long
ALL10104.....Curved For Initial Tire Dismounting, 16-1/2" Long

Track Mats

Mats fold for easy storage and are ideal for use on asphalt, dirt, in the pits or on the garage floor. Vinyl covered pad measures 52" x 24" unfolded, 12" x 24" folded.

Part No. Description
ALL10126.....Black
ALL10127.....Red
ALL10128.....Blue



Utility Pad ALL12013

All purpose utility pad is an ideal ground cloth at the track, fender/seat cover or moving/storage pad. Quilted with bound edges. 72" x 80".



Wheel Dollies

Move cars easily to make more room in garage or race shop. Dollies, in steel or aluminum, have rounded lower sections to safely cradle the tire. Steel dollies are 14-1/2" wide x 23-1/2" long with standard casters for use with cars weighing less than 2,500 lbs. Aluminum dollies are 10" wide x 15-3/4" long with standard casters for cars up to 3,500 lbs. or deluxe ball bearing swivel casters to accommodate cars up to 5,000 lbs. Deluxe casters also include one wheel brake per dolly. All dollies are sold in pairs.

Part No. Description
ALL10129.....Steel, Standard Casters, Up To 2,500 Lbs.
ALL10134.....Aluminum, Standard Casters, Up To 3,500 Lbs.
ALL10135.....Aluminum, Deluxe Casters, Up To 5,000 Lbs.



Aluminum Pit Jack

Lightweight, 3,000 lb. capacity floor jack has a low profile to roll under the lowest slung race chassis. Made of high quality aluminum, jack incorporates a patented hydraulic system to reach maximum height of 17-1/2". Large, two-piece handle has a spring detent to stop it at the 12 o'clock position. Rolls easily on heavy duty rear caster wheels. Optional dirt wing adapts jack for use in unpaved pits.

Part No. Description
ALL10422.....3 Pump Red
ALL10425.....6 Pump Silver

Replacement Components

ALL10427.....Replacement Jack Seal Kit
ALL99046.....Replacement Caster Wheels
ALL99047.....Replacement U-Joint For ALL10422/10425

ALL99049.....Replacement Thumbscrew For ALL10422/10425
ALL99132.....Jack Handle For Aluminum Jack

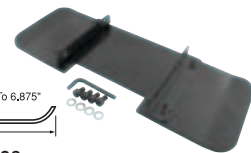


Notched Spring Cup With Removable Rubber Insert

Dirt Wing For Pit Jack

ALL10426

Provides a sturdy base when using the pit jack on a dirt surface.



Jack Stands ALL10124

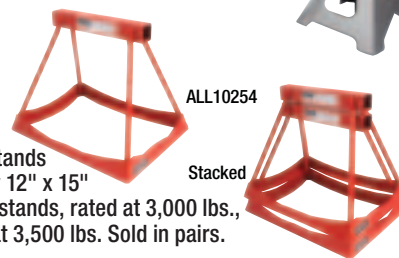
Jack stands with unitized frame will support three tons. The ratchet locking mechanism assures safe, positive height control. Adjustable from 11-5/8" to 16-1/2". Sold in pairs.



Stack Stands

Support stands can be stacked together to conserve valuable space in the trailer or the shop. Stands are 14" tall with a sturdy 12" x 15" base. Choose aluminum stands, rated at 3,000 lbs., or steel versions, rated at 3,500 lbs. Sold in pairs.

Part No. Description
ALL10254Steel, Red
ALL10255Aluminum, Silver



Valve Core Tool ALL44030

Easily remove and install new valve cores. Base of handle has a machined pattern to aid with grip. Ergonomically designed and crafted from stainless steel. Measures 3" overall length.



Valve Stem Puller ALL44032 **NEW!**

Puller threads onto valve stem and properly pulls rubber valve stems into place. Large rubber block protects expensive wheels and creates leverage when pulling.



Kyle Busch

Photo By: Eric LaFleche

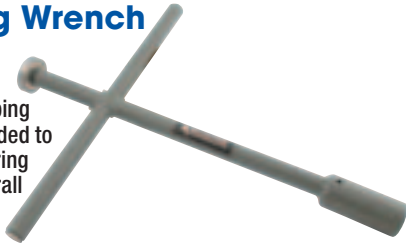


tools and accessories

Quick Spin Lug Wrench

ALL10107

Sturdy lug wrench is made of 7/8" diameter tubing with a deep 1" socket welded to one end and a sealed bearing pressed on the other. Overall length is 18" with 7-1/2" handles. Gray powder coated finish.



Economy Quick Spin Lug Wrench

ALL10108

Lug wrench is a 1" diameter tube with a shallow 1" socket welded to one end and rotating piece of plastic pipe attached to the other. The 10" handles are angled with rubber grips and the overall length is 23".



Pit Sockets

The same pit sockets used by many top race teams. Steel sockets have a 1/2" drive to work with most impact guns. For use with 1" lugnuts.

Part No.	Description
ALL10230.....	2-1/4" Tall, CNC Machined
ALL10232.....	3-1/4" Tall, CNC Machined
ALL10233.....	3-1/4" Tall, Economy



Pit Socket With Extension

ALL10240

No more extensions slipping off. 1" hex socket is 12" in length. Clears beadlock ring on Weld Wheels. 1/2" drive.



Super Sockets With Extension

Pit sockets are available with 5" or 11" extensions and include our Super Socket for fast wheel changes without jamming lug nuts. Sockets fit 1" lug nuts and are used with 1/2" drive impact guns.

Part No.	Description
ALL10242.....	5" Pit Socket
ALL10241.....	11" Pit Socket



Air Hose

3/8" rubber hose with durable outer coating is weather, oil and solvent resistant. Maximum operating pressure is 200 PSI, burst pressure is 800 PSI. Solid brass 1/4" NPT end fittings.

Part No.	Description
ALL10526.....	Air Hose 25'
ALL10527.....	Air Hose 50'



Air Hose Reels

Air hose reels are spring loaded for automatic rewind. A locking ratchet holds hose at the desired length. Adjustable guide arm can be angled to compensate for the mount location. Mounting base has two 1/2" wide slots and two 1/2" drilled holes for easy mounting to a suitable flat surface such as floor, ceiling, or wall. 3/8" hose with 1/4" NPT end is included. ALL10520 weight is 19.5 lbs, ALL10521 is 41 lbs.

Part No.	Description
ALL10521.....	Air Hose Reel 50 Ft.
ALL10525.....	Installation Kit for Air Hose Reel



ALL10525

Pit Guns

Durable Allstar 60/40 ratio air impact guns have twin hammer impact mechanisms, side exhausts and billet reverse buttons. Standard impact gun is perfect for the Saturday night racer. The Deluxe version has a steel forward-reverse valve and is highly modified for 10,000 RPM operation and quick pit stops.

Part No.	Description
ALL10430.....	Standard Impact Gun
ALL10432.....	Deluxe Impact Gun
ALL10436.....	Whip Hose 2 Ft.
ALL10438.....	Manifold For Two Impact Guns



ALL10430



ALL10438

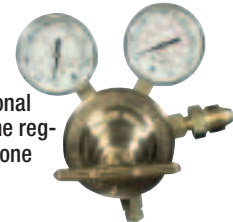


ALL10436

Air Regulator

ALL10435

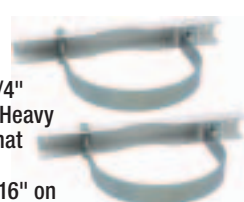
Fully modified regulator is used by professional race teams everywhere. Rated at 700 CFM, the regulator permits the use of two impact guns on one bottle.



Nitrogen Bottle Holder

ALL12210

Attach to trailer or shop wall to secure 9-1/4" diameter nitrogen bottle in upright position. Heavy steel bracket has a 1.5" wide hinged strap that pivots for easy bottle replacements. Overall bracket length is 17.5" with mounting holes 16" on center. Set of two.



Tire Durometer

ALL44034

Easily check tire hardness. Includes storage pouch.



Tire Gauges

2" gauge has a 12" flex hose with swivel chuck and pressure release valve. Available in 0-20 PSI and 0-40 PSI. Accurate to within +/- 1%.

Part No.	Description
ALL44076.....	0-20 PSI
ALL44077.....	0-40 PSI



ALL44077

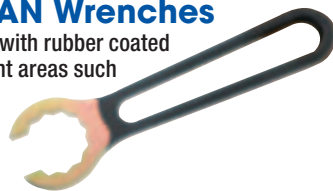


tools and accessories

Steel Twelve Point AN Wrenches

Steel twelve point AN wrenches with rubber coated handles are commonly used in tight areas such as tightening of hose ends on dry sump oil pumps or fuel lines.

Part No.	Description
ALL11178.....	-8AN
ALL11179.....	-10AN
ALL11180.....	-12AN
ALL11181.....	-16AN



Aluminum Adjustable Wrenches

Eliminate the guesswork of which wrench is needed to tighten, remove or check steel braided hose fittings. Aluminum wrenches prevent damage to fitting and are available in two sizes: 8" for fittings up to a -10, and 10" for fittings up to -20.

Part No.	Size
ALL11152.....	8"
ALL11153.....	10"



Aluminum Wrench Set ALL11100

Five-piece, aluminum wrench set for use with aluminum AN-style, braided hose fittings manufactured by Aeroquip, Earl's, etc. Sizes included are -6, -8, -10, -12, and -16. Each wrench is finished in different color anodizing for easy identification. Also sold individually.

Individual Wrenches

Part No.	Size
ALL11106.....	-6
ALL11108.....	-8
ALL11110.....	-10
ALL11112.....	-12
ALL11116.....	-16
ALL11118*	-20

*-20AN wrench not included in set.



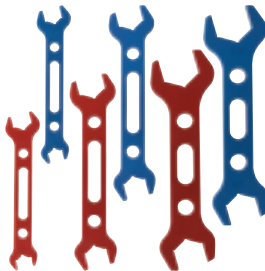
Double-Ended Aluminum Wrench Set ALL11120

Wrenches make quick work of checking both halves of a fitting when the line is installed on the car. Won't mar fittings like steel wrenches. Wrenches are also sold individually.



Individual Double-Ended Wrenches

Size	Hose Wrenches (Red) Part No.	Fitting Wrenches (Blue) Part No.
-4, -6	ALL11124	ALL11126
-8, -10	ALL11128	ALL11130
-12, -16	ALL11132	ALL11134



AN Combination Wrench ALL11151 **NEW!**

4-in-1 wrench has four different sizes to accommodate -3AN, -4AN, and -6AN line fittings, plus a 1-1/4" hex. Compact enough to fit in your pocket.



Sway Bar Nut Wrench

ALL11142

Blue anodized wrench is 3/8" thick with 5-1/2" arm. Jaw is rotated 30° and fits 1-9/32" nuts.



Trailing Arm Nut Wrench

ALL11144

Blue anodized wrench is 3/8" thick, and fits 1-3/32" jam nuts for 3/4" rod ends. Jaw is rotated 30°.



Coil-Over Eliminator Wrench ALL11146

Blue anodized wrench is 3/8" thick and fits 2" adjusting nuts on coil-over eliminators. Straight jaw, 7" overall length.



Steel Wrenches

Specialty wrenches for hard-to-reach areas.

Part No.	Description
ALL11190.....	Upper Ball Joint
ALL11192.....	Short Panhard Bar 1-3/8"



Quick Change Oil Plug Wrenches

Double-ended, blue anodized aluminum quick change oil plug wrenches are handy for checking fill plugs on center sections and inspection plugs on side bells. Wrenches are offered in two variations for popular Winters quick changes.

Part No.	Description
ALL11140.....	1-3/8" And 1-7/8"
ALL11141.....	1" And 1-3/8"



Quick Change Oil Plug Sockets

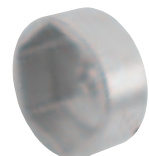
Six-point sockets fit on a 1/2" drive ratchet to remove or install plugs on quick change rear ends. Small socket fits plugs in most center sections and side bells. Large socket fits plug in Winters Ford 9" housings. Not recommended for high torque applications.

Part No.	Description
ALL11160.....	Small, 1-3/8", Blue Anodized
ALL11161.....	Large, 1-7/8", Red Anodized



Spindle Nut Socket ALL10110

Hex style socket fits Wide 5, Howe, Allstar and PCR 5X5 applications with 2-3/8" spindle nuts.



Tie Rod Socket With 26" Extension ALL10243

A socket and an extension to tighten inner tie rod end bolts on most rack and pinions, 15/16" hex head socket and a 1/2" drive.





tools and accessories

Tool Tray ALL14170

Tool tray measures 12" x 18" x 3", with hooks on one side to fasten to race car nose or sprint/midget front wing and 6" stands on the opposite side so tray will sit level. Tray has 16 holes for spark plug and nozzle holder use.



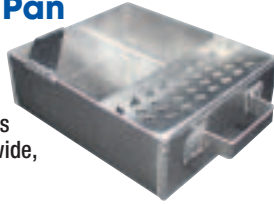
Drain Pan ALL40112

Round drain pan has molded-in handles and pour spout. 13-1/2" x 11" x 4", 7 quart capacity.



Quick-Change Drain Pan ALL14166

Aluminum drain pan is handy when changing quick-change gears. Built-in perforated shelf holds gears and allows lube to drain into pan. Pan is 10-1/4" wide, 12" long and 3-3/4" deep.



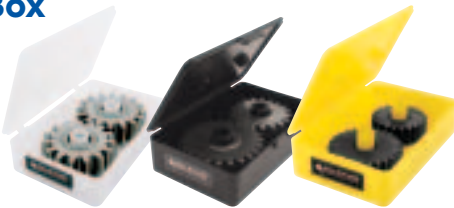
Drain Pan With Pump ALL14171

Drain pan with built-in pump holds and refills fluids when changing rear end gears. Molded plastic basin and lid slide together to prevent spilling of fluid. A crank handle is included for hand operation along with a length of straight hex shaft for use with an electric drill. 16" square x 7" tall. 14 quart capacity.



Gear Tote Box

Durable plastic quick change gear tote box organizes extra gear sets and keeps them clean. Lid snaps shut to hold gears in place. 8" L. x 5" W. x 2" H.



Description	Each Part No.	10-Pack Part No.
Clear Gear Tote	ALL14164	-
Black Gear Tote	ALL14351	ALL14351-10
Yellow Gear Tote, 6-Spline (Midget)	ALL14352	ALL14352-10.

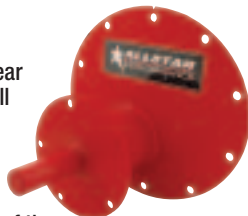
Aluminum Ford 9" Gear Tote ALL14168

Keep Ford 9" third member neat and clean. Built-in handles ease carrying.



Ford 9" Set Up Carrier ALL14169

Set up carrier takes the place of the gear set on Ford 9" rear end housings and will keep dirt and debris out of the housing. A pinion bracket can be attached to the cover so the J-bar or Panhard bar can be mounted for car transportation. The tip of the handle matches the centerline of the driveshaft U-joint so driveshaft length can be easily measured. Gloss red powder coated finish.



Axle Spline Tool ALL66104

Tool clamps in a vise to hold 31-spline axles. Assures perfect alignment for maintenance or installation of axle plugs used with Gold-Trac differentials.



T-Handle Axle Puller ALL66115

All-in-one T-handle puller threads into axle for easy installation or removal. Tool includes adapters for fine or coarse 3/8" threaded solid axles, and 3/4" coarse threads for gun drilled axles.



Pinion Centering Jig ALL68370

Pinion centering jig locates pinion centerline when building or narrowing a rear end housing. Fits Ford 9", 12-bolt Chevy, 8-3/4 Mopar, and Dana 60 rear ends.



Pinion Yoke Wrench ALL68372

Wrench fastens to most popular pinion flanges and companion flanges to hold when setting bearing pre-load and tightening retaining bolt or nut. Wrench has provisions to work with 1/2" or 3/4" drive tool. Center hole is 2" to clear most sockets. Universal slotted bolt patterns for 1/4", 5/16" and 3/8" fasteners for most AMC, Dana, Ford and GM yokes.



Van May Quick Fix Tool ALL10237

Resurface quick-change rear end snout with the rear end still in the car using the quick fix tool, developed by sprint car owner/driver Van May. Set up tool on output shaft and rotate cutter to produce a surface 90° to the shaft. Instructions included.



Shim Kit ALL10238

For ALL10237, contains one each, .012", .016", .025" thickness shim.



Storage Tote ALL059 **NEW!**

Durable storage tote has many uses around the shop or in the trailer. Store extra parts or keep parts from being damaged during storage. Great for organizing ratcheting tie downs, specialty tools, such as tire groover, siper and related tools. Totes also work for well for storing chemicals and fluids to prevent spilling in cabinets. Interlocking lid design allows multiple totes to be securely stacked together. Inside dimensions are 18"L x 12"W x 12"H.





4' x 8' Plastic Sheets

HDPE sheet plastic is 4' x 8' and available in two thicknesses .070" and .100". The .070" thick sheets are the same thickness as our rolled plastic and available in black and white. The .100" thick sheets are available in many of the same colors as our rolled plastic.

Part No.	Description
ALL222460.070", White
ALL222480.070", Black
ALL224600.100", White
ALL224610.100", Black
ALL224620.100", Red
ALL224640.100", Chevron Blue (Med.)
ALL224650.100", Orange
ALL224660.100", Yellow
ALL224670.100", Purple NEW!
ALL224680.100", Gray NEW!
ALL224690.100", Green NEW!

Rolled Plastic

HDPE rolled plastic is 24" wide by .070" thick commonly used for spoilers, skirts, body patchwork, etc. Sold in pre-cut lengths (10, 25 and 50 ft.).



Color	10 Ft. Roll Part No.	25 Ft. Roll Part No.	50 Ft. Roll Part No.
Black	ALL22400	ALL22401	ALL22402
White	ALL22405	ALL22406	ALL22407
Red	ALL22410	ALL22411	ALL22412
Orange	ALL22420	ALL22421	ALL22422
Yellow	ALL22425	ALL22426	ALL22427
Purple	ALL22430	ALL22431	ALL22432
Pepsi Blue (Light)	ALL22415	ALL22416	ALL22417
Chevron Blue (Med.)	ALL22440	ALL22441	ALL22442



Polycarbonate Sheeting

Scratch Proof – Material does not scratch easily when hit by debris, or when cleaned. Most popular for windshields, but also may be used for side and rear windows.

Standard – Less expensive, commonly used for side and rear windows. Can also be used for windshields, but scratches easily.

Part No.	Description
ALL2222036" x 72", 0.118" Scratch Proof, 2-Sides
ALL2222340" x 72", 0.118" Scratch Proof, 2-Sides
ALL22222*72" x 96", 0.118" Scratch Proof, 2-Sides
ALL2222840" x 72", 0.093" Standard
ALL2222440" x 72", 0.118" Standard
ALL22226*72" x 96", 0.118" Standard

* Must ship via truck freight

Diamond Plate Aluminum

ALL22240

4' x 8' sheets are .063" thick and provide an attractive, shiny, non-slip finish for trailer floors, steps, etc.



body and chassis

Aluminum

Aluminum sheets are 4 ft. x 10 ft., .040" thick, and available in most popular colors.

Part No.	Description
ALL22200Plain
ALL22201Chrome (Bright Clear)
ALL22202White
ALL22203Xtreme Red
ALL22204Red
ALL22209Red On Red
ALL22206Gloss Black
ALL22207Black On Black Gloss
ALL22208Flat Black
ALL22219Black On Black Flat
ALL22210Shell Gray (Med.)
ALL22211Xtreme Green
ALL22212Pepsi Blue (Light)
ALL22213Chevron Blue (Med.)
ALL22214Heron Blue (Dark)
ALL22215Orange
ALL22216Yellow
ALL22217Xtreme Purple

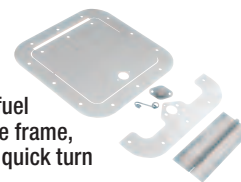


Aluminum And Diamond Plate Shipped Freight Truck, Six Sheet Minimum and Surcharge For A Shipping Pallet.

Access Panels

Aluminum panels can be mounted to provide easy access to dry sump pump tanks, fuel cells or other under panel items. Kits include frame, access door, hinge, quick turn fastener and quick turn fastener spring.

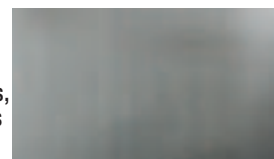
Part No.	Description
ALL185306" x 6"
ALL185326" x 14"
ALL1853414" x 14"



Aluminum Panels

Universal panels have many uses around the shop or at the track. Panels work well when fabricating spoiler sides, interior panels or on uneven pit areas as a floor jack plate. 24" x 48".

Part No.	Description
ALL22236063" Thick
ALL22238125" Thick



Sheet Steel

24 gauge steel is perfect for repairing stock interiors, firewalls, or other body panels.

Part No.	Description
ALL222424' x 8', Plain
ALL222434' x 10', White



Spring Steel Roll ALL23110

Use to make braces when hanging body and fender pieces. Hardened and tempered coil is 40' long x 1" wide x .062" thick.



Shrink Sleeve For Spring Steel

ALL23112

Shrink sleeve works great when doubling up 1" wide spring steel. 25' roll, black.





body and chassis

Stainless Wire Screen

Use screen to protect radiators, oil coolers or other items. Size refered is the approximate opening of the screen.

Part No. Description

5/64" (.025" Wire Diameter)

ALL22260.....12" x 36"

ALL22262.....36" x 36"

1/8" (.035" Wire Diameter)

ALL22265.....12" x 36"

ALL22267.....36" x 36"

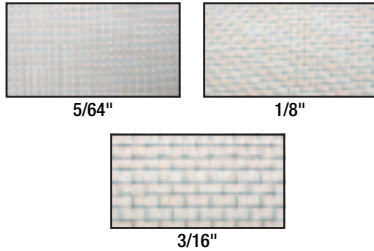
ALL22268.....36" x 48"

3/16" (.047" Wire Diameter)

ALL22270.....12" x 36"

ALL22272.....36" x 36"

ALL22273.....36" x 48"



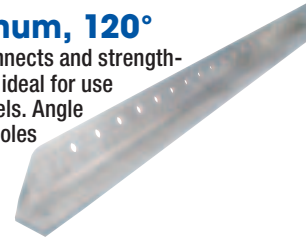
Slotted Angle Aluminum, 120°

Aluminum slotted angle support connects and strengthens body panels. 120 degree angle is ideal for use along bottom of doors or quarter panels. Angle is 1/8" thick x 1" wide and has 1/4" holes on 1" centers.

Part No. Description

ALL23130.....26" Long

ALL23131.....30" Long



Aluminum 1" x 1" Square Tubing

Square tubing is 6061-T6 grade alloy with .125" wall thickness and sold in pre-cut lengths of 4', 8', 12' and 20'. Ideal for fabricating rub rails or building shop, trailer or pit equipment like ladders, pit carts and tire racks.

Over 8 Foot Shipped Via Truck Freight

4' Length Part No.	8' Length Part No.	12' Length Part No.	20' Length Part No.
ALL22257-4	ALL22257-8	ALL22257-12	ALL22257-20

Slotted Body Strap ALL23120

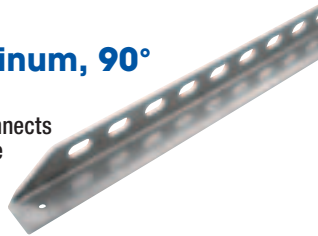
Connect and support body panels on the chassis of most race cars. 3/16" thick x 46" long x 1" wide aluminum strapping has 1/4" slots every inch. Use with ALL23105 body brace kit for complete body installation.



Slotted Angle Aluminum, 90°

ALL23124

Slotted angle aluminum brace connects and strengthens body panels. Brace is 1/8" thick x 1" wide x 72" long with 3/8" x 5/8" slots. Ideal for use along tops of spoilers.



Aluminum Flat And Angled Stock

Aluminum stock is ideal for fabricating mounting brackets, etc. Flat stock is 6061-T6, the angled aluminum is 6063-T5.

Over 8 Foot Shipped Via Truck Freight

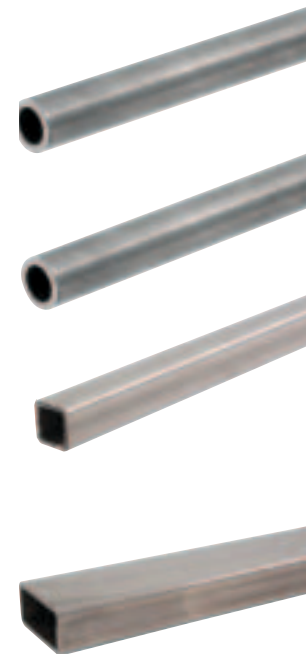
Description	4' Length Part No.	8' Length Part No.	12' Length Part No.	16' Length Part No.
Flat Stock 1" Wide				
1/8" Thick	ALL22250-4	ALL22250-8	ALL22250-12	-
3/16" Thick	ALL22251-4	ALL22251-8	ALL22251-12	-
Angled Stock 1"x1"				
1/16" Thick	ALL22253-4	ALL22253-8	-	ALL22253-16
1/8" Thick	ALL22254-4	ALL22254-8	-	ALL22254-16
3/16" Thick	ALL22255-4	ALL22255-8	-	ALL22255-16

Mild Steel Tubing

Sold only in pre-cut lengths (4, 8, 12, or 20 ft.). Always check wall thickness tolerance before cutting or welding, especially if the car is to be certified. Tubing wall thickness will vary.

Description	4' Length Part No.	8' Length Part No.	12' Length Part No.	20' Length Part No.
Round Mild Steel (1018)				
1/2" x .065"	ALL22120-4	ALL22120-8	ALL22120-12	ALL22120-20
3/4" x .065"	ALL22124-4	ALL22124-8	ALL22124-12	ALL22124-20
1" x .065"	ALL22128-4	ALL22128-8	ALL22128-12	ALL22128-20
1" x .083"	ALL22129-4	ALL22129-8	ALL22129-12	ALL22129-20
1-1/4" x .083"	ALL22132-4	ALL22132-8	ALL22132-12	ALL22132-20
1-1/4" x .120"	ALL22134-4	ALL22134-8	ALL22134-12	ALL22134-20
1-1/2" x .065"	ALL22136-4	ALL22136-8	ALL22136-12	ALL22136-20
1-1/2" x .083"	ALL22130-4	ALL22130-8	ALL22130-12	ALL22130-20
1-1/2" x .095"	ALL22138-4	ALL22138-8	ALL22138-12	ALL22138-20
1-1/2" x .120"	ALL22137-4	ALL22137-8	ALL22137-12	ALL22137-20
1-5/8" x .120"	ALL22139-4	ALL22139-8	ALL22139-12	ALL22139-20
1-5/8" x .134"	-	ALL22141-8	ALL22141-12	-
1-3/4" x .065"	ALL22144-4	ALL22144-8	ALL22144-12	ALL22144-20
1-3/4" x .095"	ALL22146-4	ALL22146-8	ALL22146-12	ALL22146-20
1-3/4" x .134"	-	ALL22148-8	ALL22148-12	-
Round D.O.M. Mild Steel (1018)				
1-1/2" x .083"*	ALL22133-4	ALL22133-8	ALL22133-12	ALL22133-20
1-1/2" x .095"*	ALL22135-4	ALL22135-8	ALL22135-12	ALL22135-20
1-5/8" x .120"*	ALL22140-4	ALL22140-8	ALL22140-12	-
1-3/4" x .095"*	ALL22145-4	ALL22145-8	ALL22145-12	ALL22145-20
1-3/4" x .120"*	ALL22147-4	ALL22147-8	ALL22147-12	ALL22147-20
Square Mild Steel (1018)				
1/2" x .065"	ALL22160-4	ALL22160-8	ALL22160-12	ALL22160-20
3/4" x .065"	ALL22164-4	ALL22164-8	ALL22164-12	ALL22164-20
1" x .083"	ALL22169-4	ALL22169-8	ALL22169-12	ALL22169-20
1-1/2" x .083"	ALL22175-4	ALL22175-8	ALL22175-12	ALL22175-20
2" x .083"	ALL22182-4	ALL22182-8	ALL22182-12	ALL22182-20
Rectangular Mild Steel (1018)				
1" x 2" x .120"	ALL22183-4	ALL22183-8	ALL22183-12	ALL22183-20
2" x 3" x .083"	ALL22184-4	ALL22184-8	ALL22184-12	ALL22184-20

* Tubing is drawn over mandrel (D.O.M.) and has tighter wall thickness tolerance.





body and chassis

Chrome Moly Steel Tubing

Sold only in pre-cut lengths (4, 8, 12, or 17 ft.). Always check wall thickness tolerance before cutting or welding, especially if the car is to be certified. Tubing wall thickness will vary.

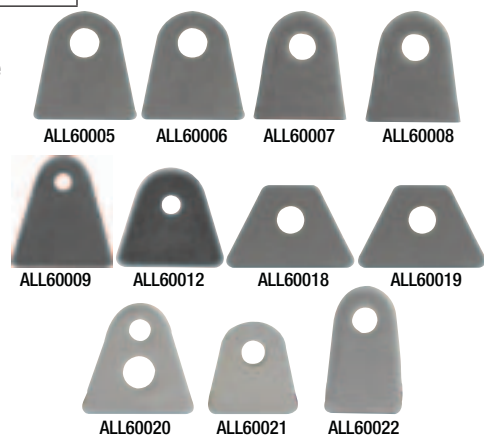
Description	4' Length Part No.	8' Length Part No.	12' Length Part No.	17' Length Part No.
Round Chrome Moly (4130)				
1/4" x .035"	ALL22000-4	ALL22000-8	ALL22000-12	ALL22000-17
3/8" x .058"	ALL22005-4	ALL22005-8	ALL22005-12	ALL22005-17
1/2" x .049"	ALL22010-4	ALL22010-8	ALL22010-12	ALL22010-17
1/2" x .058"	ALL22012-4	ALL22012-8	ALL22012-12	ALL22012-17
5/8" x .058"	ALL22017-4	ALL22017-8	ALL22017-12	ALL22017-17
3/4" x .049"	ALL22020-4	ALL22020-8	ALL22020-12	ALL22020-17
3/4" x .058"	ALL22022-4	ALL22022-8	ALL22022-12	ALL22022-17
3/4" x .095"	ALL22024-4	ALL22024-8	ALL22024-12	ALL22024-17
3/4" x .120"	ALL22026-4	ALL22026-8	ALL22026-12	ALL22026-17
3/4" x .156"	ALL22028-4	ALL22028-8	ALL22028-12	ALL22028-17
7/8" x .058"	ALL22030-4	ALL22030-8	ALL22030-12	ALL22030-17
7/8" x .095"	ALL22032-4	ALL22032-8	ALL22032-12	ALL22032-17
1" x .049"	ALL22040-4	ALL22040-8	ALL22040-12	ALL22040-17
1" x .058"	ALL22042-4	ALL22042-8	ALL22042-12	ALL22042-17
1" x .065"	ALL22044-4	ALL22044-8	ALL22044-12	ALL22044-17
1" x .095"	ALL22046-4	ALL22046-8	ALL22046-12	ALL22046-17
1-1/8" x .058"	ALL22050-4	ALL22050-8	ALL22050-12	ALL22050-17
1-1/8" x .083"	ALL22054-4	ALL22054-8	ALL22054-12	ALL22054-17
1-1/4" x .058"	ALL22060-4	ALL22060-8	ALL22060-12	ALL22060-17
1-1/4" x .065"	ALL22062-4	ALL22062-8	ALL22062-12	ALL22062-17
1-1/4" x .095"	ALL22063-4	ALL22063-8	ALL22063-12	ALL22063-17
1-1/4" x .120"	ALL22064-4	ALL22064-8	ALL22064-12	ALL22064-17
1-3/8" x .058"	ALL22070-4	ALL22070-8	ALL22070-12	ALL22070-17
1-3/8" x .095"	ALL22072-4	ALL22072-8	ALL22072-12	ALL22072-17
1-1/2" x .058"	ALL22080-4	ALL22080-8	ALL22080-12	ALL22080-17
1-1/2" x .065"	ALL22082-4	ALL22082-8	ALL22082-12	ALL22082-17
1-1/2" x .083"	ALL22084-4	ALL22084-8	ALL22084-12	ALL22084-17
1-1/2" x .095"	ALL22086-4	ALL22086-8	ALL22086-12	ALL22086-17
1-5/8" x .083"	ALL22090-4	ALL22090-8	ALL22090-12	ALL22090-17
2-1/4" x .120" x 5' Round ALL22095-5				



Flat Tabs

Mild steel flat tabs have a straight edge and can be welded parallel to round tubing, square tubing or flat plate.

Part No.	Description	Quantity Per Pack	Thickness	Overall Height	Center Of Hole Height	Hole Diameter
ALL60005	1/8" Tab, 1/2" Hole	4	1/8"	1-7/8"	1-5/16"	1/2"
ALL60006	3/16" Tab, 1/2" Hole	4	3/16"	1-7/8"	1-5/16"	1/2"
ALL60007	1/4" Tab, 3/8" Hole	4	1/4"	2"	1-3/8"	3/8"
ALL60008	1/4" Tab, 1/2" Hole	4	1/4"	2"	1-3/8"	1/2"
ALL60009	1/8" Tab, 1/4" Hole	4	1/8"	1-5/8"	1-1/4"	1/4"
ALL60012	1/8" Tab, 1/4" Hole	4	1/8"	1-7/16"	7/8"	1/4"
ALL60018	3/16" Seat Tab	4	3/16"	1-1/2"	7/8"	1/2"
ALL60019	1/4" Seat Tab	4	1/4"	1-1/2"	7/8"	1/2"
ALL60020	Window Frame Tab	10	1/16"	1"	3/4"	3/16"
ALL60021	Window Frame Tab	10	1/16"	3/4"	1/2"	3/16"
ALL60022	Bumper Tab	4	1/8"	1-1/4"	15/16"	1/4"



Radius Tabs

Mild steel radius tabs have a contoured edge to fit various sizes of round tubing.

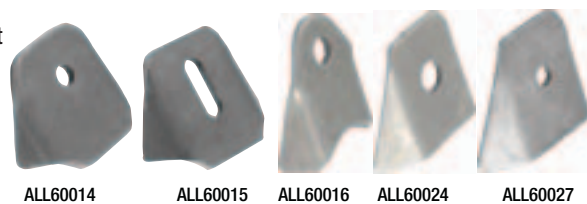
Part No.	Description	Quantity Per Pack	Thickness	Overall Height	Center Of Hole Height	Hole Diameter
ALL60000	3/16" Tab, No Hole	4	3/16"	2-3/8"	-	-
ALL60001	3/16" Tab, 3/8" Hole	4	3/16"	2-3/8"	1-3/4"	3/8"
ALL60002	3/16" Tab, 1/2" Hole	4	3/16"	2-3/8"	1-3/4"	1/2"
ALL60010	1/8" Tab, 1/4" Hole	4	1/8"	1-1/8"	9/16"	1/4"
ALL60011	1/8" Tab, 3/8" Hole	4	1/8"	1-1/8"	9/16"	3/8"



Body Brace Tabs

Mild steel tabs have built-in gussets for added support. Choose tabs that mount parallel or perpendicular to tubing. Package of four.

Part No.	Description	Thickness	Overall Height	Center Of Hole Height	Hole Diameter
ALL60014	Round Tube, 1/4" Hole	1/8"	1-1/2"	1"	1/4"
ALL60015	Round Tube, Slotted	1/8"	1-1/2"	7/8"	1/4" x 3/4"
ALL60016	Round Tube, 3/8" Hole	1/8"	1-3/4"	1-1/4"	3/8"
ALL60024	Flat Mount, 3/8" Hole	.085"	1-9/16"	7/8"	3/8"
ALL60027	Flat Mount, 1/4" Hole	3/16"	1-9/16"	7/8"	1/4"





body and chassis

Brake Line Adapter Mounting Tabs

Secure brake line adapters ALL50100-50103 with bolt-on or weld-on brackets. Bolt-on bracket has two 3/16" mounting holes.

Part No	Description
ALL60029.....	Bolt-On, 2-Pack
ALL60030.....	Weld-On, 4-Pack



Rub Rail Flange ALL60023

Flanges are 3/16" thick and commonly used when building bolt-on style rub rails. Center hole accepts 1-1/4" tubing and has two 3/8" mounting holes spaced 2-1/4" apart. Package of four.



Double Shear Seat Belt Tab ALL60031

Bracket welds to chassis and allows seat belt to mount solidly to the chassis yet still pivot. Double shear design provides twice the strength of a single tab style mount. Steel bracket accepts 1/2" hardware.



Seat Belt Anchors ALL98120

Anchor plates reinforce stock type floor pan when mounting seat belts. Plates are 1/8" thick and have a 9/16" mounting hole. Package of 2.



Steel Tubing End Caps

Cap off frame, bumpers or any tubing member. The .085" thick steel caps are sold in packs of 10.

Part No.	Description
----------	-------------

Round End Caps

ALL22280.....	7/8" O.D.
ALL22285.....	1" O.D. NEW!
ALL22281.....	1-1/4" O.D.
ALL22286.....	1-3/8" O.D. NEW!
ALL22282.....	1-1/2" O.D.
ALL22283.....	1-5/8" O.D.
ALL22287.....	1-11/16" O.D. NEW!
ALL22284.....	1-3/4" O.D.



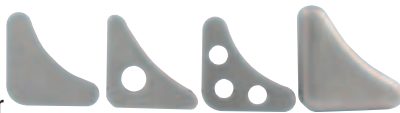
Square End Caps

ALL22290.....	1" x 1"
ALL22292.....	2" x 2"
ALL22294.....	2" x 3"



Gussets

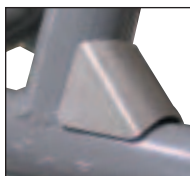
Gussets add support and strength to tubing joints when building roll cages or chassis mounts. Solid, one or three hole gussets are 1-7/8" tall x 1/8" thick. Reinforced gussets are 2-1/8" tall x 1/8" thick with a rolled edge for added strength.



Description	10-Pack Part No.	100-Pack Part No.
Solid	ALL22192	ALL22192-100
With One Hole	ALL22194	ALL22194-100
With Three Holes	ALL22196	ALL22196-100
Reinforced Gusset	ALL22198	-

Wrap Around Gussets ALL22199

Gussets fit 1.50" to 1.75" tubing and can be used to join tubing from 70° to 110°. More support and rigidity than a standard flat gusset. Sold in packs of ten.



Weld-On Nuts

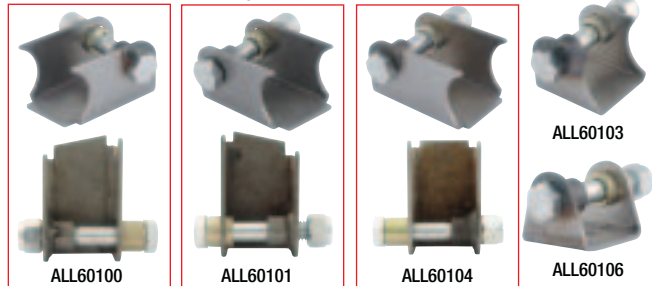
A strong and easy method of bolting brackets or accessories to chassis when the back side of the component is not accessible. Speeds up the installation and/or removal of chassis components. Nuts are offered in two coarse thread sizes, fit in a 3/4" hole and have a 1/4" shoulder to weld into place. Sold in packs of four.



Part No.	Description
ALL18550.....	3/8"-16
ALL18552.....	1/2"-13

Coil-Over Brackets

Coil-Over brackets are available in six configurations: left- or right-hand notched brackets, for use where tubing runs at an angle; notched short or long straight, for easy welding to round tubing; narrow and flat style, which is easily welded to square or rectangular tubing. Brackets include bolt, locknut and spacer.



Part No.	Description
ALL60100.....	Left Hand, Notched Style
ALL60101.....	Right Hand, Notched Style
ALL60103.....	Short Straight, Notched Style
ALL60104.....	Long Straight, Notched Style
ALL60106.....	Wide Flat Mount Style
ALL60107.....	Narrow Radius Mount Style
ALL99100.....	Replacement Bolt, Locknut And Spacer
ALL99101.....	Replacement Spacer Only



Upper Control Arm Brackets ALL60025

Stamped, 3/16" thick mild steel brackets weld to chassis to provide a mounting point for upper control arm. Brackets are sold in pairs and have two 5/8" mounting holes, spaced 7/8" apart for adjustment. May be trimmed to desired height.



Upper Control Arm Mount ALL60190

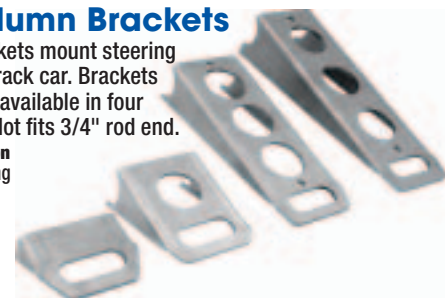
Mount is flame cut from 1/2" thick steel, with a 6" bolt spacing. Welds to frame and accepts upper A-arm.



Steering Column Brackets

Stamped-steel brackets mount steering column in any circle track car. Brackets are 3-3/16" wide and available in four lengths. Adjustment slot fits 3/4" rod end.

Part No.	Description
ALL52120.....	2-1/2" Long
ALL52122.....	4" Long
ALL52124.....	8" Long
ALL52126.....	10" Long





Steering Quickener Bracket

ALL60028

Mounts all popular steering quickeners including AFCO, Coleman, Howe and others. Bracket has two holes, spaced 1-3/4" apart, and may be welded to 1-1/2" or 1-3/4" dia. tubing.



Fuel Cell Mounting Bracket

ALL60063

Steel bracket is radiused to fit 1-1/2" tubing and has (8) 3/8" holes on 1/2" centers. Bracket is .085" thick and 1-1/2" wide x 4-3/4" tall.



Fuel Cell Mounting Brackets

Steel brackets are .125" thick, 1-3/4" wide and available in three lengths. All have 3/8" holes.

Part No.	Description
ALL600602" Long
ALL600613" Long
ALL600624-3/4" Long



Floor Pedal Plate **ALL54050**



Weld-in pedal plate is 23" x 5" x 1/8" and speeds up race car construction by providing the proper spacing for mounting pedal/master cylinder assemblies.

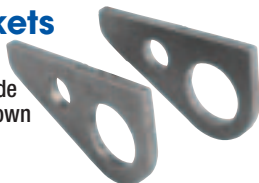
Hanging Brake Pedal Mount **ALL54060**

Welds to chassis to mount Wilwood and Tilton style hanging pedals. Notched to clear balance bar.



Chassis Tie Down Brackets **ALL60075**

Steel brackets weld to chassis and provide a secure mounting location to hook a tie down strap or winch cable. Set of two brackets.



Charging Post Bracket **ALL60064**

Securely mount Allstar charging posts on vehicles where battery is not easily accessible. Predrilled holes allow quick mounting to frame or body. Double-D hole design positions posts close together, but provides enough room for charging or jumper cable clamps.



Battery Charging Posts are also available. Please refer to page 99 for a complete listing.



Devin Gilpin

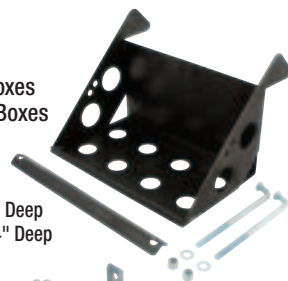
Photo By: Bob Appleget

body and chassis

Battery Boxes

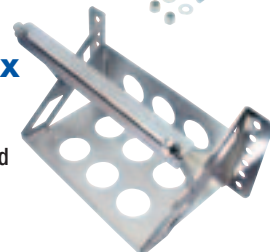
Universal, lightweight steel battery boxes may be welded or bolted to the frame. Boxes are available in two sizes and include hold down hardware.

Part No.	Description
ALL76100Full Size, 11-3/4" Wide x 7-1/4" Deep
ALL76101Short Style, 9-1/2" Wide x 7-1/4" Deep

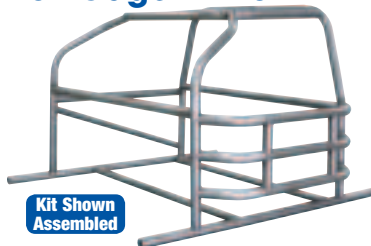


Lightweight Battery Box **ALL76102**

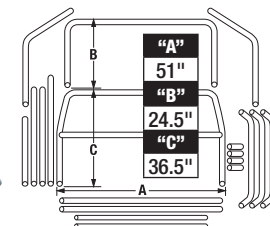
Designed to be quickly bolted in. Box is 11" wide x 7" deep and includes 3/8" hold down hardware. Zinc plated for corrosion resistance.



Roll Cage Kit For Mini Enduro **ALL22104**



Kit Shown Assembled



Fits two or four door 1991-02 Ford Escort, Dodge Neon and Ford Probe with some modifications. Mild steel .095" wall, 1-3/4" kit includes a main hoop, halo, windshield posts, front and rear dash bars, three door bars for the left side and a Z-bar for the right side, two lengths of 1-3/4" tubing for factory pinch welds and two lengths of 1-1/2" tubing to connect the sides for a solid cage and seat mount.

Replacement Component

Part No.	Description
ALL22113Door Bar

Universal Seat Mount Kit **ALL22110**

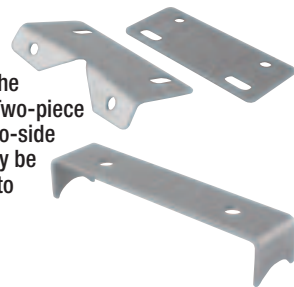
1-1/2" dia. x .095" mild steel tubing attaches to roll cage, to safely, effectively mount a seat. Use with Allstar roll cage kits.



Heavy Duty Seat Mount Brackets

Made from 1/8" thick mild steel. Upper bracket is angled to fit against the back of most aluminum racing seats. Two-piece design allows front-to-back and side-to-side adjustment. Upper mount brackets may be bolted or welded. Lower mount welds to 1-1/2" or 1-3/4" tubing.

Part No.	Description
ALL60032Upper, 2-Piece
ALL60033Lower

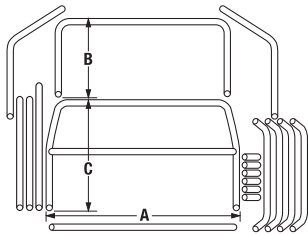




Standard Roll Cage Kits



Kit Shown Assembled



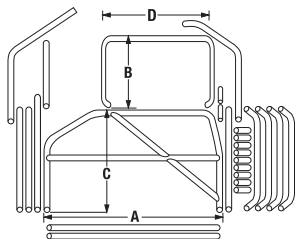
Kits include all pieces to assemble a standard cage. Mild steel tubing is 1-3/4" dia., .095" wall, is notched and has uniform bends. Four drivers side curved door bars, "Z" type right side door bar and gussets are included. Measurements are outside-to-outside.

Part No.	Description	"A"	"B"	"C"
ALL22101	1978-88 GM Metric Chassis (Monte Carlo, Regal, Etc.) 1970-81 Camaro/Firebird	54"	28"	41"
ALL22103	1970-77 Monte Carlo, Chevelle, Malibu, Etc.	55"	28"	41"
ALL22107	Mini Stock Universal	49"	28.5"	47"

Offset Deluxe Roll Cage Kit



Kit Shown Assembled



Ideal for use with template style or ABC bodies. Perimeter frame mount roll cage has the same features as other Allstar deluxe kits but includes an offset main hoop and a narrow halo for cars with an offset body or narrow roof.

Part No.	Description	"A"	"B"	"C"	"D"
ALL22109*	Offset Kit 54" Wide Frame	54"	28"	41"	31-1/2"
ALL22099**	Offset Kit 57" Wide Frame	57"	28"	41"	34-1/2"

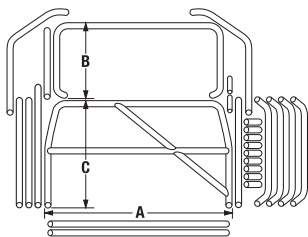
* ALL22109, door bar adds appx. 6" to width of cage to 60" overall.

** ALL22099, door bar adds appx. 6" to width of cage to 63" overall.

Deluxe Roll Cage Kits



Kit Shown Assembled



Kits include all pieces to assemble a Deluxe Roll Cage. Main hoop is fitted and tack welded together. Curved windshield posts fit closer to windshield pillar increasing driver visibility. Halo is curved and gusseted into the main hoop for maximum width, driver clearance and support. Mild 1-3/4", .095" wall steel tubing is notched and has uniform bends. "A", "B", and "C" measurements are outside-to-outside.

Part No.	Description	"A"	"B"	"C"
ALL22100	1978-88 GM Metric Chassis (Monte Carlo, Regal, Etc.) 1970-81 Camaro/Firebird	54"	28"	41"
ALL22102	1970-77 Monte Carlo, Chevelle, Malibu, Etc.	55"	28"	41"
ALL22105	1977-90 Caprice/Impala	57"	28"	41"
ALL22106	1979-93 Mini Stock Mustang	52.5"	28"	40"

body and chassis

Curved Door Bar ALL22114



Curved door bar is constructed of 1-3/4" O.D. x .095" thick wall mild steel tubing and is the same door bar included in Allstar's Standard and Deluxe roll cage kits. Bar is notched to fit between two vertical posts spaced 43" on center and adds approximately 6" to the width of the cage.

Door Bar Spacer ALL22115



Spacer fits between two door bars for added support and positions door bars 3" apart. Spacer is 4" long x 1-3/4" O.D. x .095" thick wall mild steel tubing.

Door Plate ALL22118

Plates can be welded between the drivers side door bars.

May also be used to box

"C"-type frame rails to add support and strength at critical roll cage mounting points. Plate is 48" x 4" x 1/8" thick and mandated by most sanctioning bodies and tracks.

Universal Front Hoop ALL22108



Front support kit strength to the front section of race car by reducing excessive flex. Pre-cut and notched pieces of 1-3/4", .095" wall, mild steel tubing fasten to the existing roll cage and extend to the front of the chassis to strengthen vulnerable steering and radiator areas. Lower radiator mounting brackets are included. Kit requires the addition of two front arch supports (ALL22119) sold separately to complete installation. Some modifications may be required for installation.

Front Arch Support ALL22119



Arch supports are required when installing Allstar front support kits. They add strength to suspension mounting area and create mounting points for shock brackets. Arches are constructed of 1-3/4", .095" wall, mild steel tubing, 24" wide at the mounting points and 16" tall but may be trimmed to fit many applications. Sold individually.

Universal Rear Support ALL22112



Rear support adds strength to the rear section of race car by reducing excessive flex. Kit includes pre-cut and notched pieces of 1-3/4", .095" wall, mild steel tubing which fasten to the existing roll cage and extend to the rear of the chassis. Some modifications may be required for installation.



Fuel Cell Guard ALL22374



Guard adds protection to the fuel cell and acts as a lifting point for rear of vehicle. Universal kit is constructed of 1-3/4", .095 wall, mild steel tubing. Parts are pre-cut and notched, ready to be welded together. Height is 8-3/4" and mounting width is 42".

Interior Panels

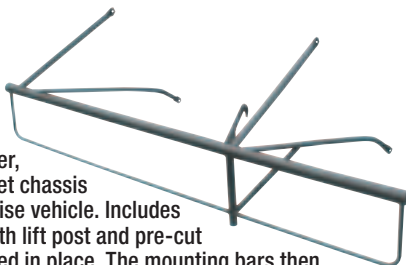
Aluminum panels can be used as a starting point when building a new interior. Shifter panel is shipped flat and requires bending to fit application. Commonly used on dirt late models and modifieds. Floor panel is 23" at widest point x 48" long. Shifter panel is 16" wide x 36" long. Panels are .100" thick.

Part No. **Description**
 ALL54062.....Floor Panel
 ALL54064.....Shifter Panel



Right Hand Jack Post Kit ALL22111

Bolt-on kit fits most Howe, Port City, Lefthander, Finish Line and other offset chassis requiring a jack post to raise vehicle. Includes an assembled bar loop with lift post and pre-cut mounting bars to be welded in place. The mounting bars then bolt to chassis tabs (not included) for removal and installation.



Replacement Components For Rocket Dirt Late Models

ALL22390/22391 three-point door bar mounts are constructed of 1" steel tubing and bolt to the frame. Each mount has a pre-welded sleeve sized to accept posts of the ALL22392 door bar, 5' L x 1-1/4" steel.



Part No. **Description**
 ALL22390.....Front Door Bar Mount
 ALL22391.....Rear Door Bar Mount
 ALL22392.....Right Door Bar

Bolt-On Front Bumpers

Bolt-on front bumpers fit most tubular and stock stubs. Bumpers brace the nose, protect the front of the car and are available for most popular body styles. Frame mounting brackets measure 30" center-to-center.

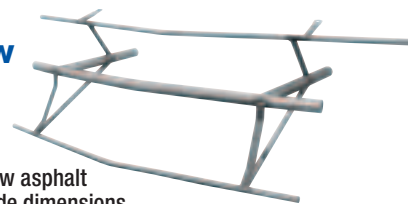


Part No.	Description	Fits This Nose
ALL22325	Camaro (1994-00)	FIV150-410
ALL22360	Monte Carlo (1995-99)	FIV620-410
ALL22365	Monte Carlo SS (1983-88)	ALL23010, ALL23011, ALL23025-28

body and chassis

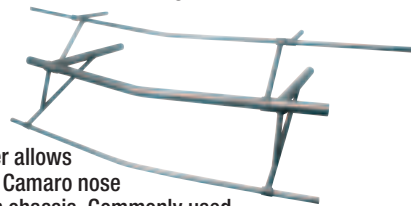
Asphalt Outlaw Front Bumper ALL22326

Install dirt Camaro nose (FIV145-410) to most outlaw asphalt late models with 34" outside dimensions including; Howe, Finishline, and Lefthander chassis. Main tubes may be shortened to length to meet nose overhang rules.



Unwelded Front Bumper ALL22327

Universal design bumper allows the installation of the dirt Camaro nose (FIV145-410) to any width chassis. Commonly used on outlaw asphalt late models.



ABC Front Bumper ALL22376

Front bumper is built to fit the ABC style nose. Mounts are 35-1/2" center-to-center, overall width is 48". Optional hood pin bar support ALL22377 provides adjustable mounting points for the hood pin bar.



Hood Pin Bar Support ALL22377

Hood pin bar support bolts to ALL22376 ABC bumper and provides an adjustable mounting point for the hood pin bar. Sold individually, two required.



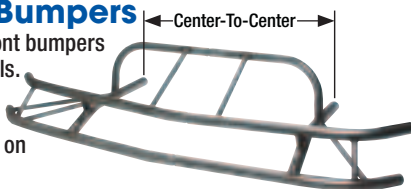
Universal Modified Bumper ALL22375

Bumper has 5" x 5" plate style mounts which measure 44" from outside to outside and can be modified to fit most chassis.



2-Piece Front Bumpers

2-piece replacement front bumpers for popular dirt late models. Constructed of 1-1/2" x .095" wall mild steel tubing. 2009 Rocket is wider on the left side.

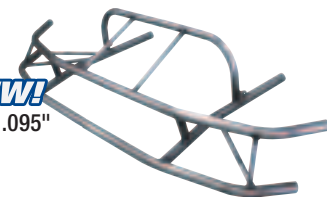


Part No. **Description**
 ALL22394.....Mastersbilt, 33" Center-To-Center
 ALL22395.....Rocket 2008, 34" Center-To-Center
 ALL22396.....Rocket 2009, 34" Center-To-Center

Mastersbilt Gen X Bumpers **NEW!**

Bumpers constructed of 1-1/2" x .095" wall mild steel tubing.

Part No. **Description**
 ALL22393.....Front Bumper, 2-Piece
 ALL22384.....Rear Bumper





body and chassis

Dirt Late Model Bumpers

Replacement bumpers for popular dirt late models. Constructed of 1-1/2" x .095" wall mild steel tubing.

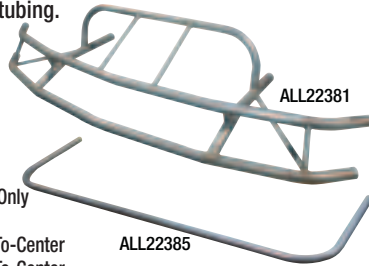
Part No. Description

Front Bumpers

- ALL22381.....Mastersbilt
- ALL22382.....Rocket
- ALL22383.....Rayburn

Rear Bumpers

- ALL22385.....Rayburn
- ALL22386.....Rayburn Right Rear Only
- ALL22387.....Mastersbilt
- ALL22388.....Rocket, 36" Center-To-Center
- ALL22389.....Rocket, 34" Center-To-Center



Universal Rear Bumper Kit ALL22373

Universal tubular bumper will fit any chassis. Slide corner pieces inside the rear section to the correct width and then weld in place. Kit includes 1-3/4" x .095" rear section, two adjustable 1-1/2" x .083" corner pieces, two lengths of tubing to connect bumper to chassis and two welding sleeves.

Replacement Component

- Part No. Description
- ALL99130.....Replacement Corner



Triangle Nose Support Set

Designed for use on Five Star MD3 noses, aluminum supports fasten to each nose side to provide added strength to nose lip. Package of two.

Part No. Description

- ALL23070.....Black
- ALL23071.....White
- ALL23072.....Red



Lower Nose Supports - Plastic

Provides support between the front nose piece and front bumper of dirt late models. 38" long supports are sold per nose half.

Part No. Description

- ALL23060.....White 3/8" Thick x 8" Wide, 3.7 lbs
- ALL23061.....Black 3/8" Thick x 8" Wide, 3.7 lbs
- ALL23062.....White 1/4" Thick x 6" Wide, 1.85 lbs
- ALL23063.....Black 1/4" Thick x 6" Wide, 1.85 lbs



Lower Nose Support - Spring Steel

ALL23065

Provides support between the front nose piece and front bumper of dirt late models. 1/16" thick x 35" long x 6" wide, 3.6 lbs.



Nose Bolt Kit

Kit provides a nice, smooth finished look on the top edge of nose panels when installing lower nose supports. Kit includes 10 bolts, flat washers and flanged nuts.

Part No. Description

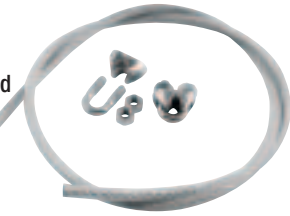
- ALL18562.....2" Long Kit
- ALL18563.....2-1/2" Long Kit



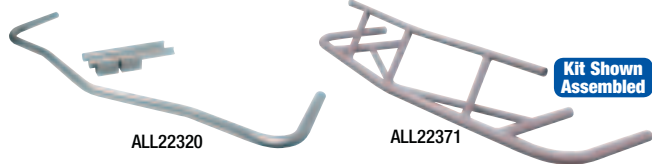
Bumper Hookup Kit

ALL22315

Cable kit mounts through the nose and around the bumper for easy wrecker hook-ups. Kit should be mandatory at every race track. Kit includes 3 ft. of coated cable and two clamps.



Universal Front Bumper Kits



Universal bumpers are adjustable to accommodate noses on any chassis. Kits must be welded. Bumpers constructed of 1-3/4"-.095" wall tubing.

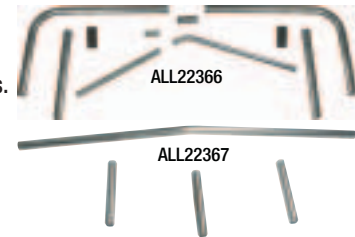
Part No.	Description	Fits This Nose
ALL22320	1981 Camaro	HOWB722, HOWB824
ALL22370	1983-88 Monte Carlo SS	ALL23010, 23011, 23025-23028
ALL22371	Mustang Mini Stock	FIV915-410
ALL22372	ABC Bumper	ABC Style Noses

2-Piece Front Bumper 1983-88 Monte Carlo SS ALL22366

Universal bumper is adjustable to accommodate Allstar noses ALL23010, ALL23011 and ALL23025-23028 to any chassis. Constructed of 1-3/4"-.095" wall tubing. Kit must be welded. Two-piece main tube allows for reduced shipping charges and easier handling.

Related Component

- Part No Description
- ALL22367Upper Support For ALL22366



Monte Carlo SS Nosepieces And Rear Bumper Covers

Tough, plastic 1983-88 style nosepieces and rear bumper covers are perfect for Factory Stock and Sportsman circle track cars.

- Part No. Description
- ALL23010.....White Nosepiece
- ALL23011.....Black Nosepiece
- ALL23025.....Red Nosepiece
- ALL23026.....Yellow Nosepiece
- ALL23027.....Orange Nosepiece
- ALL23028.....Chevron Blue Nosepiece
- ALL23015.....White Rear Bumper Cover
- ALL23016.....Black Rear Bumper Cover



Shown with decal kits (sold separately).



Decal Kits

Add a finished look to 1983-88 Monte Carlo SS nosepieces and rear bumper covers.

- Part No. Description
- ALL23014.....SS Nose Decal Kit
- ALL23017.....SS Rear Bumper Cover Decal Kit



Headlight Decals ALL23050

Glow-in-the-dark. 16.25" long x 5.5" tall. Sold in pairs.

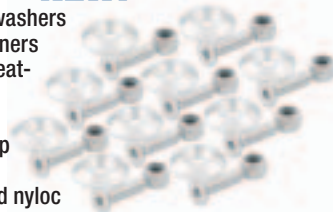




body and chassis

Countersunk Bolt Kit **NEW!**

Kit includes specially designed washers which allow the socket head fasteners to install flush with the surface creating a smooth finished look. Many uses include mounting roofs, side skirts, spoilers and replacing sharp edged fasteners inside cockpit. Kit includes ten washers, bolts and nyloc nuts.

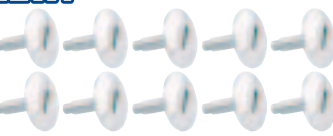


Part No.	Description
ALL18630.....	10-32" x 1" With 1" O.D. Washer
ALL18634.....	1/4" x 1" With 1-1/4" O.D. Washer
ALL18635.....	1/4" x 1" With 1-1/4" O.D. Washer, Black
ALL18638.....	Aluminum Washer #10
ALL18639.....	Aluminum Washer 1/4"



Flush Mount Bolts **NEW!**

1/4"-20 flush mount bolts have a beveled head to provide a smooth finished appearance and are slotted for installation with a standard screwdriver. Excellent choice when securing body panels, roof panels, nose supports, spoiler sides and many other uses. Size noted is under head length. Package of 10.



Part No.	Description
ALL18640.....	3/4" Steel
ALL18641.....	3/4" Aluminum
ALL18642.....	3/4" Aluminum, Black Anodized
ALL18645.....	1" Steel
ALL18646.....	1" Aluminum
ALL18647.....	1" Aluminum, Black Anodized
ALL18650.....	1-1/4" Steel
ALL18651.....	1-1/4" Aluminum
ALL18652.....	1-1/4" Aluminum, Black Anodized



Steel Hood Pin Kits

Kits include two each: 4" long x 1/2" dia. chrome steel pins, chrome steel scuff plates, clips, and four nuts. Available with flip-over or hairpin-style clips.

Part No.	Description
ALL18512.....	Kit With 3/16" Dia. Flip-Over Clips
ALL18513.....	Kit With 1/4" Dia. Flip-Over Clips
ALL18514.....	Kit With 5/32" Dia. Hairpin Clips

Replacement Components	
ALL18515.....	3/16" Flip-Over Clip
ALL18506.....	1/4" Flip-Over Clip
ALL18516.....	5/32" Hairpin Clip
ALL18517.....	Chrome Scuff Plate
ALL18518.....	Aluminum Scuff Plate



Aluminum Hood Pin Kits 1/2" Pins And 1/4" Clips

Kits include two each: 4" x 1/2" dia. aluminum pins, aluminum scuff plates, flip over style, 1/4" dia. steel clips, and four nuts. Clip flips over pin and over-center action locks clip in place.

Part No.	Description
ALL18500.....	Silver (Plain) Kit
ALL18501.....	Red Anodized Kit
ALL18502.....	Blue Anodized Kit
ALL18503.....	Gold Anodized Kit
ALL18504.....	Black Anodized Kit

Replacement Components	
ALL18506.....	1/4" Flip-Over Clip
ALL18507.....	Silver Pins, 2-pk
ALL18508.....	Red Pins, 2-pk
ALL18509.....	Blue Pins, 2-pk
ALL18510.....	Gold Pins, 2-pk
ALL18511.....	Black Pins, 2-pk
ALL18518.....	Aluminum Scuff Plate



Aluminum Hood Pin Kits 3/8" Pins And 3/16" Clips

Kits include two aluminum 3-1/2" x 3/8" dia. pins, two aluminum scuff plates, two flip over style 3/16" dia. steel clips, and four nuts. Clip flips over stud and locks into place. Over-center action keeps clip in place.

Part No.	Description
ALL18480.....	Silver (Plain) Kit
ALL18481.....	Red Anodized Kit
ALL18482.....	Blue Anodized Kit
ALL18483.....	Gold Anodized Kit
ALL18484.....	Black Anodized Kit

Replacement Components

ALL18487.....	Silver Pins, 2-pk
ALL18488.....	Red Pins, 2-pk
ALL18489.....	Blue Pins, 2-pk
ALL18491.....	Black Pins, 2-pk
ALL18515.....	3/16" Flip-Over Clip
ALL18519.....	Alum. Scuff Plate 3/8" Hole



Lightweight Hood Pin Kits

Kits include two 2-3/4" long gun-drilled pins, two clips, two lightweight plates and four nuts.

Part No.	Description
ALL18472.....	3/8" Silver
ALL18473.....	3/8" Black
ALL18476.....	1/2" Silver
ALL18477.....	1/2" Black

Replacement Components

ALL18470.....	Lightweight Aluminum Scuff Plate, 3/8" Hole
ALL18471.....	Lightweight Aluminum Scuff Plate, 1/2" Hole
ALL18515.....	3/16" Flip-Over Clip



3/16" Flip-Over Clip With Lanyard

ALL18460 **NEW!**

Our most popular size flip-over clip commonly used with hood pins is now available with an added lanyard which fastens to body panel for easy installation and prevention of lost clips. Sold each.



Lock Pin **NEW!**

Use lock pin in place of a bolt for items that need to be removed frequently or easily. Wire loop folds over pin to lock in place. Size noted is under head length to end of pin.

Part No.	Description
ALL18452.....	1/4" x 2"
ALL18454.....	5/16" x 2-3/4"



Zinc Coated Hair Pins **NEW!**

Formed from .093" diameter steel wire. Package of 2.

Part No.	Description
ALL18442.....	1-5/8"
ALL18444.....	2-1/2"



Diaper Pin **NEW!**

Steel diaper pin is zinc coated and sold each.

Part No.	Description
ALL18446.....	1-3/4", .060" Diameter Wire
ALL18448.....	2-3/4", .090" Diameter Wire



Hood Pin Mounts

Ease hood pin installation. Choose from threaded boss or tab style.

Part No.	Description
ALL18521.....	3/8"-24 Hood Pin Boss, 2 Per Package
ALL18521-50.....	3/8"-24 Hood Pin Boss, 50 Per Package
ALL18520.....	1/2"-20 Hood Pin Boss, 2 Per Package
ALL18520-50.....	1/2"-20 Hood Pin Boss, 50 Per Package
ALL60005.....	1/8" Mounting Tab with 1/2" Hole, 4 Per Package
ALL60006.....	3/16" Mounting Tab with 1/2" Hole, 4 Per Package





body and chassis

Hinge Kits

Use steel hinge kits on hoods and deck lids for quick, one person inspection of engine compartment or trunk area. Kits include two complete hinges.

Part No.	Description
ALL18522.....	2-1/4" Long, 5/8" Tall, 1/4" Hole
ALL18523.....	3" Long, 1-1/4" Tall, 1/4" Hole, Radiused Edges For Added Strength

Hood Prop **ALL23260**

Aluminum hood prop is a must for asphalt template bodied cars. Sold each.

Hood Scoops

Carbon fiber look scoops are molded from durable high impact plastic and have a molded-in flange for easy mounting. Protect air cleaners that protrude through the hood from dirt and debris.

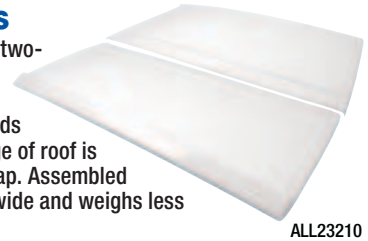
Part No.	Description
ALL23230.....	2.5" Tall, Tapered Front
ALL23232.....	3.5" Tall, Tapered Front
ALL23233.....	3.5" Tall, Open Front
ALL23235.....	3.5" Tall, Straight Front
ALL23237.....	5.5" Tall, Straight Front



2-Piece Dirt Roofs

High impact plastic roofs are two-piece to simplify installation and ship easier. Built-in flange provides a finished look and adds strength to center. Leading edge of roof is recessed for an optional roof cap. Assembled roof measures 50" long x 48" wide and weighs less than 13 lbs.

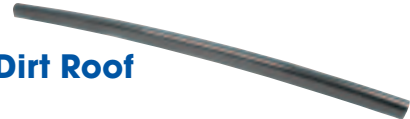
Part No.	Description
ALL23210.....	White
ALL23211.....	Black



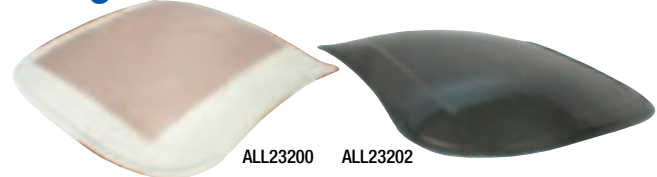
Front Cap For Dirt Roof

ALL23215

Black plastic front cap fits over the leading edge of most roofs including the Allstar 2-piece dirt roof. Carbon fiber look cap is 41.5" wide.



Outlaw Fiberglass And Carbon Fiber Roofs



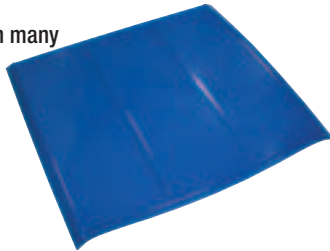
Roof for outlaw late models has a molded-in recess to provide a smooth transition for mounting wrap-around windshields. Integrated strengthening ribs channel air over the roof to the rear spoiler. Lightweight construction in your choice of fiberglass, weighing 3.5 lbs. or carbon fiber, weighing 4.25 lbs.

Part No.	Description
ALL23200.....	Fiberglass
ALL23202.....	Carbon Fiber

Dirt Roofs

Popular fiberglass roofs found on many dirt late model and modifieds. 46" long x 47" wide.

Part No.	Description
ALL23180.....	White
ALL23181.....	Black
ALL23182.....	Red
ALL23183.....	Yellow
ALL23184.....	Chevron Blue
ALL23185.....	Orange



Dirt Roof Caps

Roof cap for ALL23180-23185 1-piece dirt roof, 43-1/2" long.

Part No.	Description
ALL23188.....	Poly With Simulated Carbon Fiber Look
ALL23189.....	Carbon Fiber



Dirt Roof Extensions

Aluminum extension rivets to the back of ALL23180-23185 1-piece dirt roofs extending the total length by 8.5". A nice addition for modifieds. Made from .040" aluminum.

Part No.	Description
ALL23190.....	White
ALL23191.....	Black
ALL23192.....	Red
ALL23193.....	Yellow
ALL23194.....	Chevron Blue
ALL23195.....	Orange



Rear Roof Support **ALL23122**

Drilled and slotted aluminum support adds strength to dirt late model and modified rear roof area. Support is 42" long x 7/8" wide x 1/8" thick and has 1/4" x 1/2" slots on 1" centers.



Windshield **ALL23240**

Tinted scratch-proof material provides added protection to driver from wind and debris. Shield has rounded edges for a clean, smooth appearance and measures 30" long x 4-1/4" tall. Commonly used on dirt late models and modifieds.



Body Bolt Kits

Bolts are designed for easy installation and removal, have 1/4"-20 thread and a built-in captured washer. Nuts have built-in serrations which prevent loosening. Body bolts are commonly used to fasten body panels and side skirts for easy removal but may be used anywhere a bolt with a captured washer is needed. Available in black phosphate or gold anodized finish.

Part No.	Color	Quantity
ALL18560	Black	10
ALL18560-50	Black	50
ALL18561	Gold	10
ALL18561-50	Gold	50



Body Bolt Kit With Clips

Kit allows the clip to stay fastened to body panel or angle bracing when removing body panels for maintenance or cleaning. 1/4"-20 bolts have a captured washer. Choose from standard or gold finished in 10- or 50-packs.

Part No.	Description
ALL18558.....	Standard Body Bolt Kit, 10-Pack
ALL18559.....	Gold Body Bolt Kit, 10-Pack NEW!
ALL18559-50.....	Gold Body Bolt Kit, 50-Pack NEW!

Steel Fender Washers **ALL18216**

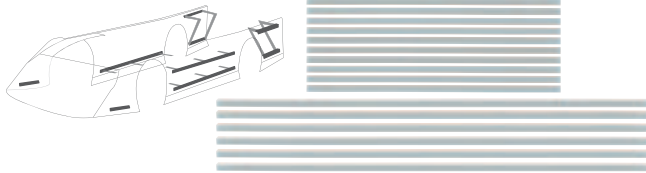
Have 1/4" I.D., 1" O.D. and are sold 100 to a pack.





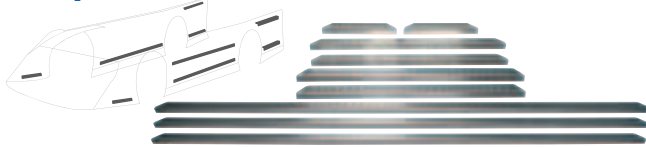
body and chassis

Economy Body Brace Kit ALL23104



Basic starter kit for hanging modified or late model bodies includes 6 pieces of 1" x 60" long 90° angle, 2 pieces of 1" x 12" long angle and 10 pieces of 1" x 1/8" x 36" long flat strap to connect body to frame.

Body Brace Kit ALL23105



Slotted aluminum kit simplifies installation of body panels. Three door braces, two lower quarter, two upper quarter, and two front fender pieces are included. Use flat stock, spring steel, or slotted strapping to complete assembly (Sold separately.)

Aluminum Rocker Panels ALL23018

Aluminum panels have a 1" wide angled lip which angles upward gradually from front to rear for added downforce. Can be cut to fit any application. Sold per pair.



8" Aluminum Adjustable Rear Spoilers

Designed for Dirt Late Models, spoiler consists of two unequal length laser cut sections, one 16" wide and the other 56" wide. Unequal length design blades provide more down force on the right rear. Assembled spoilers measure 72" wide x 8" tall with a 1" reinforcing lip. Three vertical supports have 2" of adjustment. Choose from plain or black powder coated. Mounting hinges included.



Part No.	Description
ALL22997Plain
ALL22999Black

Replacement Components

ALL99121Right Rear Side Support, Plain
ALL99122Right Rear 16" Spoiler Section, Plain
ALL99123Right Rear 16" Hinge, Plain
ALL99124Right Rear Side Support, Black
ALL99125Right Rear 16" Spoiler Section, Black
ALL99126Right Rear 16" Hinge, Black

8" Clear Adjustable Rear Spoiler ALL23005

Clear spoiler has a break-away right side which allows more spoiler to remain on car in the event of right side damage creating more down force on right rear of the car. Kit includes two piece main body, three mounting supports and two hinges. 8" tall x 72" wide.



Replacement Components

Part No.	Description
ALL99166Replacement RR Side Support
ALL99167Replacement RR Spoiler Sec



Slotted Angle Aluminum, Body Strap and Spring Steel, which are used to support and strengthen body panels, are also offered. Please see pages 21 and 22 for a complete listing.

Universal Clear Spoiler 5" Tall ALL23006

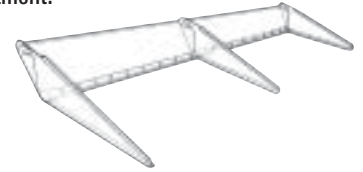
Two section spoiler has a 20" wide blade with ends and a 50" wide blade that can be cut to desired width.



Clear Adjustable Rear Spoilers

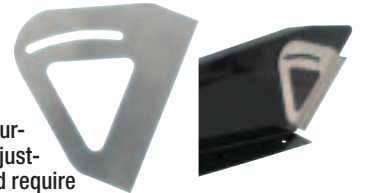
Clear spoilers are available in 5", 6", 8" or 12" tall styles. Spoiler kit includes two-piece main body with preattached hinge and three mounting fins. Easily mounts with rivets or bolts. All pieces are slotted for precise fit and ease of adjustment.

Part No.	Description
ALL230085" x 72"
ALL230006" x 68"
ALL230018" x 68"
ALL230028" x 72"
ALL230038" x 72", Tinted
ALL2300412" x 72"



Spoiler Brackets

Aluminum spoiler brackets rivet directly to the rear spoiler and bolt to the side supports. Curved slot allows quick spoiler adjustment. Brackets are sold flat and require a 90-degree bend for LH or RH use. Sold in 2-packs.

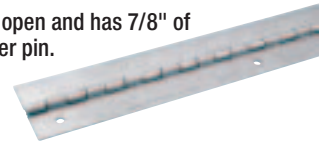


Part No.	Description
ALL232506-1/2" Tall Bracket For 8" Spoiler
ALL232514" Tall Bracket For 5" Spoiler

Aluminum Hinges

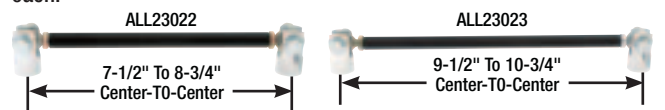
Low profile hinge is 2" wide when open and has 7/8" of flat surface on each side of the center pin. Available in 36" and 72" lengths for hinging spoilers and access doors.

Part No.	Description
ALL2312536"
ALL2312772"



Spoiler Supports

Aluminum support has strong 1/4" steel rod ends with hardware. Center tube has left-and right-hand threaded ends for quick adjustments. 1/4"-20 mounting hardware included. Sold each.



Part No.	Description
ALL230226"
ALL230238"

Spoiler/Body Brace ALL23020



Mount a spoiler or use as a lower quarter panel or nose support. Adjusts from 16" to 28". Sold each.



Chase Elliott



body and chassis

Aluminum Line Clamps

Clamps have a protective neoprene cushion to prevent chafing and can be used to secure brake/fuel/oil lines, ignition wires or battery cables. Package of 10.

Part No.	Clamp Size
ALL18300.....	3/16"
ALL18301.....	1/4"
ALL18302.....	3/8"
ALL18303.....	1/2"
ALL18304.....	5/8"
ALL18305.....	3/4"
ALL18306.....	7/8"
ALL18307.....	1"
ALL18308.....	1-1/4"



Universal Brackets

Universal 1/4" thick aluminum brackets may be drilled, and tapped, to custom mount just about anything.

Part No.	Description
ALL10452.....	1-1/4"
ALL10453.....	1-1/2"
ALL10454.....	1-3/4"

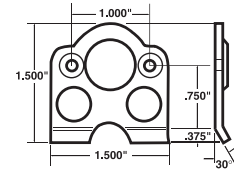
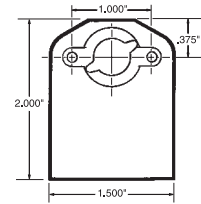
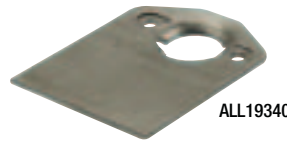


Quick Turn Fasteners and Accessories

Nylon Line Clamps

Clamps are used to secure brake/fuel/oil lines, ignition wires or battery cables. Package of 10.

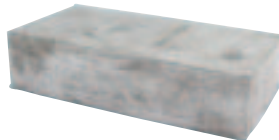
Part No.	Clamp Size
ALL18310.....	3/16"
ALL18311.....	1/4"
ALL18312.....	3/8"
ALL18313.....	1/2"
ALL18314.....	5/8"
ALL18315.....	3/4"
ALL18317.....	1"



Ballast

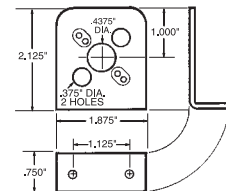
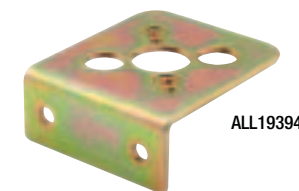
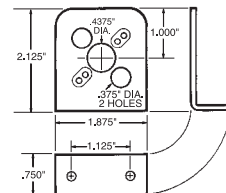
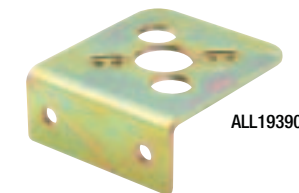
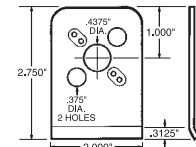
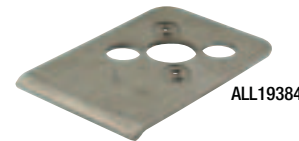
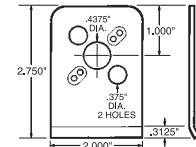
Add weight where it's needed. Available in 25, 30 and 40 pound blocks.

Part No.	Description
ALL14180.....	25 Lb., 4" x 8" x 2"
ALL14179.....	30 Lb., 2-1/2" x 2-1/2" x 12"
ALL14182.....	40 Lb., 12" x 3-1/2" x 2-1/2"



Mounting Brackets for 1" Springs (.0625" Thick)

	10-Pack Part No.	50-Pack Part No.
Weld-on	ALL19340	ALL19342
Weld-on w/ALL19300 Spring	ALL19350	ALL19352
Weld-on, Lightweight	ALL19364	ALL19366



Economy Ballast Brackets

Anodized aluminum brackets allow mounting ballast quickly. Brackets are tapped with a 1/2"-13 hole for a ballast mounting stud. Mounting stud and nut sold separately.

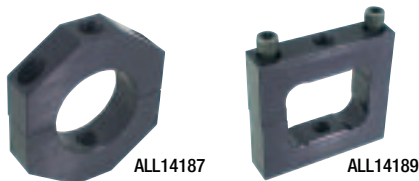
Part No.	Description
ALL14195.....	1-1/2"
ALL14197.....	1-3/4"
ALL14190.....	Stud And Nut, 1/2"-13 x 6" Long



Ballast Brackets

Used for mounting ballast or other components. Aluminum brackets are anodized black and have a 1/2"-13 tapped hole for a ballast mounting stud. Stud and nut must be purchased separately.

Part No.	Description
ALL14178.....	1"
ALL14183.....	1-1/4"
ALL14184.....	1-3/8"
ALL14185.....	1-1/2"
ALL14187.....	1-3/4"
ALL14188.....	2"
ALL14189.....	2" x 2"
ALL14190.....	Stud And Nut, 1/2"-13 x 6" Long



Accessory Clamps

Aluminum clamps are ideal for mounting small parts. Clamps have 1/4"-20 tapped holes and include two button head Allen screws.

Part No.	Description
ALL10455.....	1"
ALL10456.....	1-1/4"
ALL10457.....	1-3/8"
ALL10458.....	1-1/2"
ALL10459.....	1-3/4"



Mounting Brackets for 1" and 1-3/8" Springs (.0625" Thick)

	10-Pack Part No.	50-Pack Part No.
Weld-on LH	ALL19380	ALL19382
Weld-on RH	ALL19384	ALL19386
Rivet-on LH	ALL19390	ALL19392
Rivet-on RH	ALL19394	ALL19396
Weld-on, Lightweight (1-3/8" Spring only)	ALL19360	ALL19362