



SAE Grade Motor Oils

A synthetic oil formulated for the commercial or daily driven vehicle, helps reduce heat and prolongs engine life. API certified.

Description	1 Qt. Bottle	1 Case 12/1 Qt. Bottles	5 Gallon Pail	1 Case 4/5 Qt. Containers	1 Case 4/1 Gallon Containers
5W20	ROY01520	ROY12520	—	ROY54520	—
5W30	ROY01530	ROY12530	ROY05530	ROY54530	—
0W40	ROY11484	ROY11485	—	—	—
5W40	ROY01540	ROY12540	—	—	—
10W30	ROY01130	ROY12130	ROY05130	ROY54130	—
10W40	ROY01140	ROY12140	ROY05140	—	—
15W40	ROY01154	ROY12154	ROY05154	—	ROY44154
20W50	ROY01250	ROY12250	ROY05250	—	—
30W	ROY01030	ROY12030	—	—	—
40W	ROY01040	ROY12040	—	—	—
50W	ROY01050	ROY12050	—	—	—

Engine Break-In Oil

Highly refined mineral oil contains high levels of zinc and phosphorous to protect flat tappet and roller camshafts and valve train at initial start-up, and to promote piston ring seating. Non API certified.

Description	1 Qt. Bottle	1 Case 12/1 Qt. Bottles
SAE Engine Break-In Oil	ROY11487	ROY11497



Max ATF Automatic Transmission Fluid

An excellent synthetic replacement for Dexron III or Mercon type ATF, it withstands extreme heat and reduces friction for improved shifting.

Description	1 Qt. Bottle	1 Case 12/1 Qt. Bottles	5 Gallon Pail
Max ATF	ROY01320	ROY12320	ROY05320



Synchromax Manual Transmission Fluid

Recommended for manual transmissions requiring automatic transmission fluid or motor oil. Synerlec additive improves shift quality and reduces friction and gear noise over a wide temperature range. One qt. bottles.

Description	1 Qt. Bottle	1 Case 12/1 Qt. Bottles
Synchromax MTF	ROY01512	ROY12512



Max-Gear Gear Oil

Max-Gear reduces frictional wear and heat through an impact-absorbing, non-shearing molecular structure.

Description	1 Qt. Bottle	1 Case 12/1 Qt. Bottles	5 Gallon Pail
75W90	ROY01300	ROY12300	ROY05300
75W140	ROY01301	ROY12301	—
85W140	ROY01303	ROY12303	ROY05303



Max EZ Power Steering Fluid

A consistent, non-foaming high performance fluid that resists high temperatures, pressures and increases pump life.

Description	12 Oz. Bottle	1 Case 12/1 Qt. Bottles
Max EZ Power Steering Fluid	ROY01326	ROY12326



Purple Ice Radiator Super Coolant

Reduces the surface tension of the coolant so it can better penetrate heat transfer areas of the radiator. Provides a protective coating for aluminum parts, prevents corrosion and lubricates pump seals. Ideal for use in racing where glycol (anti-freeze) is not used.

Description	12 Oz. Bottle	1 Case 12/16 Oz. Bottles
Purple Ice Super Coolant	ROY01600	ROY12600



Ultra-Performance Grease

Aluminum complex, water-resistant multi-service grease can withstand high temperatures and extreme loads.

Description	14.5 Oz. Tube	1 Case 30/14.5 Oz. Tubes
Ultra Performance Grease	ROY01312	ROY30312



Maxfilm Synthetic Penetrating Lubricant

Stops squeaks, loosens rusted parts, prevents rust, corrosion and reduces wear. Maxfilm is so tough it can be used as a tapping fluid for cutting threads. Clings to metal surfaces for long lasting protection.

Description	4 Oz. Can	11 Oz. Can	1 Case 12/4 Oz. Cans	1 Case 12/11 Oz. Cans
MaxFilm	ROY10035	ROY05000	ROY12035	ROY15000



Max-Tuff Synthetic Assembly Lubricant

Synthetic lubricant is designed for use in assembling repaired equipment. Max-Tuff adheres to metal surfaces, creating a load-bearing physical barrier between surfaces, while also protecting against rust and corrosion.

Description	8 Oz. Bottle	1 Case 12/8 Oz. Bottles
Max-Tuff Assembly Lubricant	ROY01335	ROY12335



Extended Life Royal Purple Oil Filters

Royal Purple oil filters provide superior particle removal, high-performance and optimized flow characteristics for maximum performance and longer filter life. Filters feature 100% synthetic micro-glass media for superior particle removal with 99% filtration efficiency at 25 microns. Please use cross reference chart below to determine correct filter or call a sales associate for assistance.

Royal Purple Cross Reference

Royal Purple	Fram	Wix	K&N
ROY30-1218	PH13,PH5	51060, 51061	HP-3002
ROY30-8A	HP1	51622	HP-3001





Max-Cycle

Specifically formulated to exceed the demands of highly stressed air- or liquid-cooled 4-cycle engines. Max-Cycle uses select synthetic base oils and proprietary Synerlec additive to provide increased film strength. May also be used in wet-clutch transmissions.

Description	1 Qt. Bottle	1 Case 12/1 Qt. Bottles
10W30	ROY01314	ROY12314
10W40	ROY01315	ROY12315
20W50	ROY01316	ROY12316



Max-Chain Oil

A high performance, synthetic lubricant for chains, open gears and exposed metal surfaces subjected to severe loading — even in wet, acidic and/or dusty environments. Max-Chain can be applied by spraying or brushing and leaves a non-tacky film to minimize the collection of dirt, dust and contaminants. Effective up to 400° F.

Description	4 Oz. Can	1 Case 12/4 Oz. Cans
Max-Chain Oil	ROY11407	ROY12407



Two-Cycle TCW III Motor Oil

High performance engine oil improves the performance and reduces wear in two-cycle gasoline engines. Recommended for use in both pre-mixed and oil injected engines, synthetic solvency lubricant keeps spark plugs and exhaust ports clean for maximum engine efficiency.

Description	1 Qt. Bottle	1 Case 12/1 Qt. Bottles
TCW III Motor Oil	ROY01311	ROY12311



Andy Sprague



ProClassic Hose

Hose is lighter and easier to assemble than stainless steel braided hose and is compatible with fuel, oil or anti-freeze. The lightweight nylon fiber outer braid with extruded synthetic rubber core has a 350 PSI pressure rating and may be used with Full Flow swivel hose ends.



Dash Size	3 Feet	6 Feet	10 Feet	20 Feet
-6	RUS632053	RUS632063	RUS632073	RUS632093
-8	RUS632103	RUS632113	RUS632123	RUS632143
-10	RUS632153	RUS632163	RUS632173	RUS632193
-12	RUS632203	RUS632213	RUS632223	RUS632243

Crimp Collars

For use with ProClassic crimp-on swivel hose ends. Packs of six.

Part No.	Description
RUS610353-4
RUS610363-6
RUS610373-8
RUS610383-10
RUS610393-12



ProClassic Crimp-On Swivel Hose Ends

Aluminum, ProClassic hose ends swivel a full, 360° and are easily assembled. Install the crimp collar over the hose, push the hose onto the fitting, and crimp the collar with the manual crimper and the proper die.



(Collars and dies are sold separately.) All fittings have a black/silver anodized finish.

Dash Size	Straight Hose End	45° Hose End	90° Hose End	120° Hose End	150° Hose End	180° Hose End
-4	RUS610403	RUS610413	RUS610423	-	-	-
-6	RUS610463	RUS610473	RUS610483	RUS610493	RUS610503	RUS610513
-8	RUS610523	RUS610533	RUS610543	RUS610553	RUS610563	RUS610573
-10	RUS610583	RUS610593	RUS610603	RUS610613	RUS610623	RUS610633
-12	RUS610643	RUS610653	RUS610663	RUS610673	RUS610683	RUS610693

Manual Crimper RUS652000

Hand operated, over-center style vise crimper offers reliable and consistent hose crimping. Install the die that corresponds with the hose size. Crimper dies must be purchased separately.

Part No.	Description
RUS652001-4 Crimper Die
RUS652002-6 Crimper Die
RUS652003-8 Crimper Die
RUS652004-10 Crimper Die
RUS652005-12 Crimper Die



Tom Sprague Jr.

Photos By: John Berglund



Twist-Lok Hose Ends

Lightweight aluminum hose ends are up to 40% lighter than conventional units and are easy to assemble or disassemble. The 37° sealing surface is compatible with other manufacturers' hose ends. Fittings are available in red/blue or black/silver anodizing. For use only with Twist-Lok hose.



Dash Size	Straight Blue/Red	Straight Black/Silver	45° End Blue/Red	45° End Black/Silver	90° End Blue/Red	90° End Black/Silver
-4	RUS624000	RUS624003	—	RUS624073	RUS624150	RUS624153
-6	RUS624010	RUS624013	RUS624080	RUS624083	RUS624160	RUS624163
-8	RUS624020	RUS624023	—	RUS624093	RUS624170	RUS624173
-10	RUS624030	RUS624033	RUS624100	RUS624103	RUS624180	RUS624183

Twist-Lok Hose

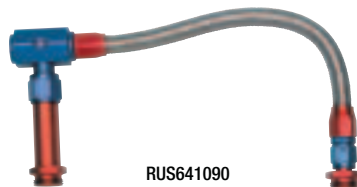
High quality, economical Twist-Lok hose is manufactured using a CPE synthetic rubber liner covered with a reinforcing fabric braid, resulting in a product that is lightweight and flexible. Hose is pressure rated up to 250 PSI, suitable for use with most fuel and oil systems. Not recommended for use with power steering systems. Compatible with all AN style fittings. Offered in black only.



Dash Size	I.D.	O.D.	3 Feet	6 Feet	10 Feet	15 Feet	25 Feet
-4	1/4"	15/32"	RUS634343	RUS634353	RUS634103	RUS634113	—
-6	3/8"	5/8"	RUS634363	RUS634373	RUS634143	RUS634153	RUS634163
-8	1/2"	23/32"	RUS634383	RUS634393	RUS634183	RUS634193	RUS634203
-10	5/8"	13/16"	RUS634403	RUS634413	RUS634223	—	RUS634243

Dual Inlet Carburetor Fuel Line Kits

Assembled kits offer a choice of large diameter ProClassic, Proflex or Twist-Lok AN hose and red/blue or black anodized aluminum AN fittings for exceptional flow. Each has a 1/8" NPT port for a fuel pressure gauge.



Part No.	Description
RUS641090-6AN ProClassic Carb Kit, Holley 4150
RUS641093-6AN ProClassic Carb Kit, Black Finish, Holley 4150
RUS641100-6AN ProClassic Carb Kit, With Gauge, Holley 4150
RUS641150-8AN Proflex Carb Kit, Holley 4150
RUS641153-8AN Proflex Carb Kit, Black Finish, Holley 415
RUS641180-8AN Proflex Carb Kit, With Fuel Filter, Demon Carbs
RUS641270-8AN Proflex Carb Kit, With Fuel Filter, Holley 4150

Competition Fuel Filters

Billet aluminum, in-line filters for high volume fuel systems have 40 micron disc elements. Available with polished, red and blue, or black anodized finishes.



Description	Polished Part No.	Red/Blue Part No.	Black Part No.
-6AN Male Ports, 3" L. x 1-1/4" Dia.	RUS650140	RUS650130	RUS650133
-8AN Male Ports, 3-1/4" L. x 1-1/4" Dia.	RUS650110	RUS650100	RUS650103

Proflex Stainless Steel Braided Hose

Stainless steel outer braid, and Chlorinated Polyethylene (CPL) synthetic liner with flexible nylon inner resist abrasion and will not collapse. Hose has a temperature range of -40°F to +350°F and is compatible with all hydrocarbon and alcohol-based fuels, lubricants and additives. For use with full flow hose ends.



Size	I.D.	OD.	3 Feet	6 Feet	10 Feet	15 Feet	20 Feet
-4AN	7/32"	1/2"	RUS632000	RUS632010	RUS632020	—	—
-6AN	11/32"	9/16"	RUS632050	RUS632060	RUS632070	RUS632080	RUS632090
-8AN	7/16"	5/8"	RUS632100	RUS632110	RUS632120	RUS632130	RUS632140
-10AN	9/16"	25/32"	RUS632150	RUS632160	RUS632170	RUS632180	—
-12AN	11/16"	29/32"	RUS632200	RUS632210	RUS632220	RUS632230	—
-16AN	7/8"	1-1/8"	RUS632250	RUS632260	—	—	—

Full Flow Hose Ends

Reusable, anodized aluminum fittings are lightweight and durable. Taper-designed hose ends are easy to assemble. The 37° angled sealing surface is compatible with other manufacturers' hose ends. Choose from blue/red or black anodized fittings in swivel and non-swivel designs.



Dash Size	Straight Blue/Red	Straight Black	45° Non-Swivel Blue/Red	45° Swivel Black	90° Non-Swivel Blue/Red	90° Swivel Black
-4AN	RUS610010	RUS610013	—	—	RUS610150	—
-6AN	RUS610020	RUS610023	RUS610090	RUS613093	RUS610160	RUS613163
-8AN	RUS610030	RUS610033	RUS610100	RUS613103	RUS610170	RUS613173
-10AN	RUS610040	RUS610043	—	RUS613113	RUS610180	RUS613183
-12AN	RUS610050	RUS610053	—	RUS613123	—	RUS613193

Full Flow Swivel Pipe Thread Hose Ends

Unique, pipe thread-to-hose swivel ends need no separate adapter for direct connection to fuel pumps, fuel filters, fuel regulators, oil pumps, etc. Red and blue anodized fittings have a tapered hose end for easy assembly.

Dash Size	Pipe Size	90° Swivel
-6AN	1/4"	RUS612090
-6AN	3/8"	RUS612100
-8AN	1/2"	RUS612110
-10AN	1/2"	RUS612120
-12AN	1/2"	RUS612130
-12AN	3/4"	RUS612140



Black AN Flare To NPT Adapters



Dash Size	NPT Size	Straight	45°	90°
-6	1/4"	RUS660443	RUS660953	RUS660823
-6	1/8"	RUS660453	—	—
-6	3/8"	RUS660463	—	RUS660843
-8	3/8"	RUS660483	RUS660963	RUS660863
-8	1/2"	RUS660493	—	—
-10	1/2"	RUS660503	RUS660973	RUS660883
-10	3/8"	RUS670033	—	—
-12	1/2"	RUS660523	—	—
-12	3/4"	RUS660513	—	—



Aluminum Fuel Hose Adapters

Special adapters are used to connect 3/8" or 1/2" aluminum tubing to -6AN or -8AN adapters. Crimp design prevents the requirement for tube flaring.

Part No.	Description
RUS639200	-6AN Female Swivel To 3/8" Hose
RUS639210	-6AN Male 37° To 3/8" Hose
RUS639220	-8AN Female Swivel To 1/2" Hose
RUS639230	-8AN Male 37° To 1/2" Hose



Fuel Pressure Take Off Adapters

All Adapters have a 1/8" NPT port.

Part No.	Dash Size
RUS670340	-6AN
RUS670350	-8AN
RUS670360	-10AN



Black Fuel Pressure Take Off Adapters

All adapters have a 1/8" NPT port.

Part No.	Description
RUS670063	Flare-To-Pipe Pressure Adapter, 3/8" NPT x -6AN
RUS670083	Flare-To-Pipe Pressure Adapter, 3/8" NPT x -8AN
RUS670343	Female-To-Male Fuel Pressure Take Off, -6AN
RUS670353	Female-To-Male Fuel Pressure Take Off, -8AN



Black Fuel Cell Bulkheads

Includes sealing washers and jam nuts.

Part No.	Dash Size
RUS670850	-6AN
RUS670860	-8AN
RUS670870	-10AN
RUS670880	-12AN



Black Allen Socket Pipe Plug

Part No.	NPT Size
RUS662033	1/8"
RUS662043	1/4"
RUS662053	3/8"
RUS662063	1/2"



Speed Bleeder

Patented bleeder valve has a spring loaded, one-way ball and check valve. The stainless steel check ball opens to allow the old fluid and air out then closes automatically between pumps, preventing air from re-entering the line. Replaces original bleeder valve in caliper or wheel cylinder. Sold two per package.

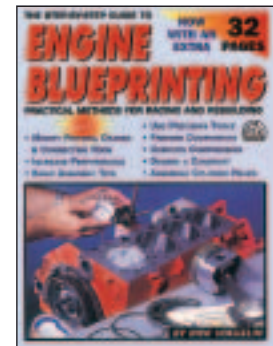
Part No.	Thread	Overall Length
RUS639510	7/16"-20	1.25"
RUS639540	1/4"-28	.940"
RUS639560	10mm x 1.0	35mm
RUS639580	10mm x 1.5	30mm
RUS639590	3/8"-24	1.50"



S-A Design Books

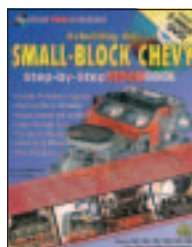
S-A offers a full complement of technical books to help the beginner or seasoned oval track enthusiast. Each softbound book is packed full of informative photos and illustrations.

Part No.	Description
SAB08	Super Tuning and Modifying Holley Carburetors, 144 Pages
SAB21	Engine Blueprinting, 160 Pages.
SAB26	How To Build The Small Block Chevrolet, 160 Pages
SAB55	Chevrolet Small Block Parts Interchange Manual, 144 Pages
SAB56	High Performance Ford Engine Parts Interchange, 128 Pages
SAB57	How To Build Max Performance Chevy Small Blocks On A Budget, 160 Pages
SAB69	How To Build Max Performance Ford V-8's On A Budget, 128 Pages
SAB79	High Performance Ignition Systems, 128 Pages
SAB85	How To Build Big Inch Small Block Fords, 128 Pages
SAB87	How To Build Big Inch Small Block Chevys, 128 Pages
SAB102	How To Rebuild The Small Block Ford, 144 Pages
SAB103	How To Build And Modify High-Performance Manual Transmissions, 128 Pages
SAB105	High Performance Small Block Chevy Cams/Valvetrain, 144 Pages
SAB113	How To Build And Modify Rochester Quadrajet Carburetors, 128 Pages
SAB125	High Performance Chevy Small Block Cylinder Heads, 144 Pages
SAB126	High Performance Brake Systems: Design, Selection, and Installation, 144 Pages
SAB159	Automotive Welding: A Practical Guide, 128 Pages
SAB196	Automotive Sheet Metal Forming And Fabrication, 144 Pages



Rebuilding The Small Block Chevy: Step-By-Step Videobook SAB116

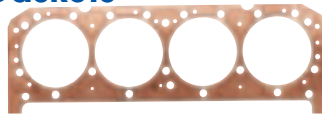
A 160 page, softbound book and an instructional DVD video cover disassembly, inspection, machine shop operations, parts selection and reassembly of the small block Chevy engine.





Pro Copper Head Gaskets

Made from C-1100 ASTM B152-92 copper sheet, annealed to Rockwell F-32. Skin packaged. Sold in pairs.



Part No.	Description	Gasket Bore	Thickness
Small Block Chevy			
SCE011063	Small Block 350	4.060"	.032"
SCE011064	Small Block 350	4.060"	.043"
SCE011066	Small Block 350	4.060"	.062"
SCE011153*	Small Block 400	4.155"	.032"
SCE011154*	Small Block 400	4.155"	.043"
SCE011155*	Small Block 400	4.155"	.050"
SCE011156*	Small Block 400	4.155"	.062"
SCE011158*	Small Block 400	4.155"	.080"
SCE011204*	Small Block 400	4.200"	.043"
SCE011206*	Small Block 400	4.200"	.062"

Small Block Ford 260-351W

SCE036064	Small Block 260-351W	4.060"	.043"
SCE036065	Small Block 260-351W	4.060"	.050"
SCE036066	Small Block 260-351W	4.060"	.062"
SCE036154	Small Block 260-351W	4.155"	.043"

Ford 351 SVO

SCE039156	351 SVO Yates C3	4.155"	.062"
-----------	------------------	--------	-------

* SB Chevy 400 gaskets do not have steam holes between cylinders. SCE recommends using 304 stainless steel wire to properly o-ring cylinder heads and block. O-rings do not need to be changed when installing new head gaskets. See below for O-ring wire.

Titan Head Gaskets

ICS Titan Head Gaskets

Gaskets have integral combustion seals and built-in coolant seals, eliminating the need for O-rings and sealant. Strong enough for extreme compression rates. Sold per pair.

Titan Copper Head Gaskets

Gaskets combine great strength with built-in offset fluid seals. Titan copper head gaskets require that the block or cylinder head be O-ringed. O-ring wire must be purchased separately. Sold per pair.

Description	Gasket Bore	Thk.	Titan Part No.	ICS Titan Part No.
Small Block Chevy				
Small Block 350	4.060"	.043"	SCET11064	SCES11064
Small Block 350	4.060"	.050"	-	SCES11065
Small Block 400	4.155"	.043"	SCET11154	SCES11154
Small Block Ford				
Small Block 260-351W	4.060"	.043"	SCET36064	SCES36064
Small Block 260-351W	4.155"	.043"	SCET36154	SCES36154

O-Ring Wire

SCE recommends 304 stainless wire to properly O-Ring cylinder heads or block. O-Rings do not need to be changed when installing new head gaskets.

Part No. Description
 SCE315410.041" 304 Stainless Wire, 15' Roll
 SCE315420.041" Wire And Installation Kit



Accu-Seal Intake Gaskets

Available in standard Accu-Seal "E" and premium Accu-Seal Pro. Accu-Seal Pro Gaskets have the added benefit of silicone beading around the ports and water passages.

Part No.	Description	Port Type	Thk.
Small Block Chevy 265-400			
SCE111118	Accu-Seal "E"	18°/1.265" x 2.180"	1/16"
SCE111124	Accu-Seal "E"	Pro Topline 14°	1/16"
SCE211102	Accu-Seal Pro	23°/1.32" x 2.19"	1/16"



Pro Copper Exhaust Gaskets



SCE offers exhaust gaskets made of dead soft copper, a very durable material that will never blow out. Sold in pairs

Part No.	Description	Port Type
Small Block Chevrolet 262-400		
SCE4011	Pro Copper Embossed	Round 1.50" dia.
SCE4111	Pro Copper Embossed	18° Heads
SCE4211	Pro Copper Embossed	Square 1.50" x 1.437"
SCE4311	Pro Copper Embossed	"D" Port w/1.75" dia. Primary Tube
Small Block Chevy Gen. III		
SCE4019	LS1	Round, 1.5"-1.625" Dia.
Small Block Ford 289-351W		
SCE4036	Pro Copper Embossed	Windsor Head 1.250" x 1.500"

Dyno-Pak Bulk Gasket Sets

Packaged for the engine builder. Set includes ten gaskets.

Part No. Description

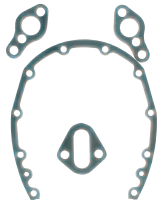
Small Block Chevy 265-400

- SCE202Distributor Gaskets
- SCE1100-10.....Timing Cover Gaskets
- SCE1101-10.....Water Pump Gaskets (sets)
- SCE1102-10.....Timing Cover Seals
- SCE1104-10.....Rear Main Seals, 2-Pc. Silicone, Rocket Block
- SCE1105-10.....Rear Main Seals, 2-Pc. Silicone
- SCE1106-10.....2-Bolt Fuel Pump Gaskets
- SCE1107-10.....4-Bolt Fuel Pump Plate Gaskets
- SCE1108-10.....Thermostat Housing Gaskets
- SCE11090-10....Oil Pan, 1975-85 LH Dipstick, Thick Ft. Seal



SB Chevy Timing Cover, Water Pump And Fuel Pump Gasket Set SCE11100

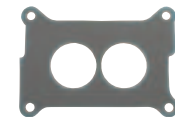
Fits all 265-400 Chevys and includes timing cover, water pump and fuel pump gaskets.



Carburetor Base Gaskets

Sold in packs of ten.

- Part No. Description**
- SCE349Holley 2BBL 500 CFM
 - SCE354Holley 4BBL, Open
 - SCE355Holley 4BBL, 4-Hole, 1.750"
 - SCE355-2.....Holley 4BBL, 4-Hole, 1.685"



Molded Carburetor Gaskets **NEW!**

Perform quicker, easier jet changes. Re-usable, tear- and shrink-proof gaskets are made of non-stick, thermoplastic material to resist all fuels and fuel additives. Precise fuel and air passages improve performance. Gaskets are sold by the pair, or in Dyno-Paks of ten.

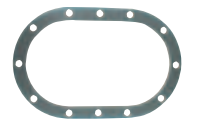
Description	Pair Part No.	Dyno-Pak (10 Pair) Part No.
4150 Metering Block Gaskets	SCE410	SCE410-10
4150/4160 Fuel Bowl Gaskets	SCE411	SCE411-10
4150 Fuel Bowl And Metering Gaskets	SCE412	-

Quick Change Rear Axle Gaskets

Choose Accu-Seal "E" or reusable, steel core Accu-Seal Pro gaskets.

Description	Accu-Seal "E" Part No.	Accu-Seal Pro Part No.
Quick Change Gasket	SCE103	SCE203
Quick Change Gasket, Contoured	-	SCE204*

* Steel core



Professional Series Quick Change Gears

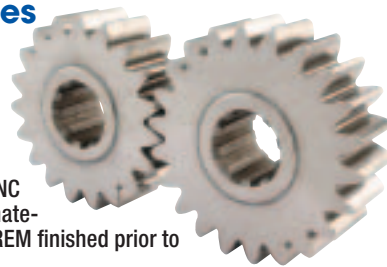
Gears are aircraft grade steel for maximum strength. Each gear has a shaved finish to minimize backlash and run out, and is broached for 10-spline shaft. A 5-step heat treating process yields maximum gear life for high stress applications. Gears have a black oxide finish, and lightened faces to reduce rotating weight without sacrificing strength.



Gear Set No.	4.11 Ring and Pinion (9-37 Teeth)		No. Of Teeth	4.86 Ring and Pinion (7-34 Teeth)	
	Low	High		Low	High
SCS01	4.11	4.11	21/21	4.86	4.86
SCS02	3.96	4.26	27/28	4.68	5.04
SCS05	3.94	4.28	24/25	4.66	5.07
SCS15	3.90	4.33	19/20	4.61	5.12
SCS15K	3.85	4.38	15/16	4.56	5.18
SCS26	3.83	4.41	27/29	4.52	5.22
SCS06	3.78	4.46	23/25	4.47	5.28
SCS25	3.74	4.52	20/22	4.42	5.35
SCS12	3.68	4.58	26/29	4.36	5.42
SCS07	3.63	4.64	23/26	4.30	5.49
SCS07K	3.58	4.69	21/24	4.23	5.54
SCS17	3.55	4.76	19/22	4.19	5.63
SCS08K	3.49	4.83	17/20	4.13	5.71
SCS08	3.48	4.85	22/26	4.11	5.75
SCS19	3.45	4.89	21/25	4.08	5.78
SCS09K	3.42	4.93	25/30	4.05	5.83
SCS09	3.39	4.97	19/23	4.01	5.88
SCS11	3.35	5.04	22/27	3.96	5.97
SCS03	3.31	5.10	25/31	3.92	6.03
SCS13	3.29	5.14	20/25	3.89	6.08
SCS18	3.25	5.19	19/24	3.85	6.13
SCS04K	3.21	5.26	18/23	3.80	6.21
SCS04	3.18	5.31	24/31	3.76	6.28
SCS20	3.16	5.34	20/26	3.74	6.32
SCS22	3.12	5.41	19/25	3.69	6.39
SCS16	3.08	5.48	24/32	3.65	6.48
SCS10	3.04	5.55	20/27	3.60	6.56
SCS34	3.00	5.63	19/26	3.55	6.65
SCS14	2.95	5.72	23/32	3.50	6.76
SCS14K	2.93	5.76	20/28	3.47	6.81
SCS35	2.91	5.80	17/24	3.44	6.86
SCS32K	2.87	5.89	23/33	3.39	6.97
SCS24	2.83	5.96	20/29	3.35	7.04
SCS36	2.80	6.04	17/25	3.30	7.15
SCS37	2.78	6.07	23/34	3.29	7.18
SCS23	2.74	6.16	18/27	3.24	7.29
SCS21	2.69	6.28	17/26	3.18	7.43
SCS27	2.66	6.35	22/34	3.15	7.51
SCS43	2.63	6.42	16/25	3.11	7.59
SCS1028	2.60	6.49	19/30	3.08	7.67
SCS1029	2.57	6.58	15/24	3.04	7.77
SCS1030	2.53	6.67	16/26	2.99	7.89
SCS1041	2.49	6.77	17/28	2.95	8.00
SCS1031	2.46	6.85	21/35	2.91	8.10
SCS1033K	2.43	6.94	16/27	2.88	8.20
SCS41	2.49	6.77	17/28	2.95	8.00
SCS31	2.46	6.85	21/35	2.91	8.10
SCS33K	2.43	6.94	16/27	2.88	8.20
SCS33	2.41	7.00	17/29	2.85	8.28
SCS31K	2.39	7.05	14/24	2.83	8.33
SCS30K	2.37	7.12	15/26	2.80	8.42

Sportsman Series Quick Change Gears

A quality gear priced for the sportsman racer! Sportsman Series, unlightened 10-spline gears are CNC crown hobbled from 8620 material, then heat treated and REM finished prior to shipment.



Gear Set No.	4.11 Ring and Pinion (9-37 Teeth)		No. Of Teeth	4.86 Ring and Pinion (7-34 Teeth)	
	Low	High		Low	High
SCS101	4.11	4.11	28/28	4.86	4.86
SCS102	3.96	4.26	27/28	4.68	5.04
SCS105	3.94	4.28	24/25	4.66	5.07
SCS1015	3.90	4.33	19/20	4.61	5.12
SCS1015K	3.85	4.38	15/16	4.56	5.18
SCS1026	3.83	4.41	27/29	4.52	5.24
SCS106	3.78	4.46	23/25	4.47	5.28
SCS1025	3.74	4.52	20/22	4.42	5.35
SCS1012	3.68	4.58	26/29	4.36	5.42
SCS107	3.63	4.64	23/26	4.30	5.49
SCS107K	3.58	4.69	21/24	4.23	5.54
SCS1017	3.55	4.76	19/22	4.19	5.63
SCS108K	3.49	4.83	17/20	4.13	5.71
SCS108	3.48	4.85	22/26	4.11	5.75
SCS1019	3.45	4.89	21/25	4.08	5.78
SCS109K	3.42	4.93	25/30	4.05	5.83
SCS109	3.39	4.97	19/23	4.01	5.88
SCS1011	3.35	5.04	22/27	3.96	5.97
SCS103	3.31	5.10	25/31	3.92	6.03
SCS1013	3.29	5.14	20/25	3.89	6.08
SCS1018	3.25	5.19	19/24	3.85	6.13
SCS104K	3.21	5.26	18/23	3.80	6.21
SCS104	3.18	5.31	24/31	3.76	6.28
SCS1020	3.16	5.34	20/26	3.74	6.32
SCS1022	3.12	5.41	19/25	3.69	6.39
SCS1016	3.08	5.48	24/32	3.65	6.48
SCS1010	3.04	5.55	20/27	3.60	6.56
SCS1034	3.00	5.63	19/26	3.55	6.65
SCS1014	2.95	5.72	23/32	3.50	6.76
SCS1014K	2.93	5.76	20/28	3.47	6.81
SCS1035	2.91	5.80	17/24	3.44	6.86
SCS1032K	2.87	5.89	23/33	3.39	6.97
SCS1024	2.83	5.96	20/29	3.35	7.04
SCS1036	2.80	6.04	17/25	3.30	7.15
SCS1037	2.78	6.07	23/34	3.29	7.18
SCS1023	2.74	6.16	18/27	3.24	7.29
SCS1021	2.69	6.28	17/26	3.18	7.43
SCS1027	2.66	6.35	22/34	3.15	7.51
SCS1043	2.63	6.42	16/25	3.11	7.59
SCS1028	2.60	6.49	19/30	3.08	7.67
SCS1029	2.57	6.58	15/24	3.04	7.77
SCS1030	2.53	6.67	16/26	2.99	7.89
SCS1041	2.49	6.77	17/28	2.95	8.00
SCS1031	2.46	6.85	21/35	2.91	8.10
SCS1033K	2.43	6.94	16/27	2.88	8.20

Note: On short tracks such as 1/4, 3/8, and 1/2 mile, the larger gear is most commonly used on top. Example: If you have a 4:11 ring and pinion and you install a #4 gear set with the big gear on top you will have a 5:31 ratio.

- High designation on chart means higher numerical number, but lower gear ratio.
- Low designation on chart means lower numerical number, but higher gear ratio.



Cooling Fans

Recognized worldwide as a leader in the manufacture of cooling fans for demanding situations. Among the finest performance fans available.



Accessories

Part No.	Description
SPAFRH.....	Fan Wiring Kit With Relay
SPA185FH.....	Fan Wiring Kit With Relay And 185° F. Thermostat
SPA195FH.....	Fan Wiring Kit With Relay And 195° F Thermostat
SPA30130011.....	Fan Mounting Bracket Kit



SPA195FH

Part No.	Diameter	CFM	Overall Dia.	Depth	Blade Style
SPA30100402	6.5" Puller	330	7.24"	2.05"	Straight
SPA30100393	7.5" Pusher	440	8.27"	2.05"	Straight
SPA30100392	9" Puller	590	9.72"	2.05"	Straight
SPA30100360	10" Puller	650	11.2"	2.05"	Straight
SPA30100374	10" Pusher	650	11.2"	2.05"	Straight
SPA30101500	11" Puller	970	12.2"	2.48"	Straight
SPA30102029	12" Puller	1450	13.23"	3.39"	Curved
SPA30101504	12" Puller	1230	13.23"	2.48"	Straight
SPA30102042	14" Puller	1780	15.04"	3.39"	Curved
SPA30101509	14" Puller	1280	15.04"	2.48"	Straight
SPA30102041	14" Puller	1650	15.04"	3.39"	Straight
SPA30100400	16" Puller	1300	16.30"	2.05"	Straight
SPA30102049	16" Puller	2025	16.30"	3.39"	Curved
SPA30102113	16" Puller	2315	16.30"	3.65"	Curved
SPA30102047	16" Pusher	2035	16.3"	3.39"	Straight
SPA30101516	16" Puller	1610	16.3"	2.48"	Straight
SPA30101517	16" Pusher	1610	16.3"	2.48"	Straight
SPA30102120	16" Puller	1920	16.3"	3.39"	Straight
SPA30102052	Dual 11" Puller	2720	23.46"	4.25"	Straight



Performance Forged Pistons

SRP pistons, manufactured by JE, are "making performance affordable". SRP specific designed forgings eliminate several phases of the manufacturing process, saving time and cutting costs with high volume production. All pistons are machined to accept 1/16" top, 1/16" second and 3/16" oil rings. Sold in sets of eight, with wrist pins and double Spiro Locks.



Professional Piston And Ring Kits

Revolutionary piston kits have modern racing pistons with low friction metric ring sets. Kits include lightweight forged side relief (FSR) pistons, wrist pins with carbon steel wire locks, and JE Pro Seal premium piston ring set, complete with 1.2mm premium steel top rings, 1.5mm Napier second rings and 3.0mm standard tension oil rings.



Part No.	Bore Size	Stroke	Rod Length	Dish/Dome Volume	Comp. Height	Comp. Ratio
Small Block Chevy						
Flat Top Pistons						
SRP138081	4.030"	3.480"	5.700"	-5cc	1.560"	10.3:1
SRP138085	4.030"	3.480"	6.000"	-5cc	1.260"	10.3:1
SRP138089	4.030"	3.750"	5.700"	-5cc	1.425"	11.0:1
SRP138093*	4.030"	3.750"	6.000"	-5cc	1.125"	11.0:1
SRP138082	4.040"	3.480"	5.700"	-5cc	1.560"	10.3:1
SRP138086	4.040"	3.480"	6.000"	-5cc	1.260"	10.3:1
SRP138094*	4.040"	3.750"	6.000"	-5cc	1.125"	11.0:1
SRP138087	4.060"	3.480"	6.000"	-5cc	1.260"	10.4:1
SRP138095*	4.060"	3.500"	6.125"	-5cc	1.125"	11.1:1
SRP138097	4.155"	3.750"	5.700"	-5cc	1.425"	11.6:1
SRP138100*	4.155"	3.750"	6.000"	-5cc	1.125"	11.6:1
High Compression Domed Pistons						
SRP140678	4.030"	3.480"	6.000"	11cc	1.260"	12.9:1
SRP140348*	4.030"	3.750"	6.000"	7cc	1.125"	12.9:1
SRP140679	4.040"	3.480"	6.000"	11cc	1.260"	13.0:1
SRP140349*	4.040"	3.750"	6.000"	7cc	1.125"	12.9:1
SRP140680	4.060"	3.480"	6.000"	11cc	1.260"	13.0:1
SRP140350*	4.060"	3.750"	6.000"	7cc	1.125"	13.0:1
SRP142021	4.155"	3.750"	5.700"	4cc	1.425"	12.9:1
SRP142024*	4.155"	3.750"	6.000"	4cc	1.125"	12.9:1
SRP142035	4.165"	3.480"	6.000"	9cc	1.260"	13.0:1
SRP142025*	4.165"	3.750"	6.000"	4cc	1.125"	12.9:1
Dished Pistons						
SRP139632	4.030"	3.480"	5.700"	-24cc	1.560"	8.5:1
SRP138103*	4.030"	3.750"	6.000"	-16cc	1.125"	9.8:1
SRP139628	4.030"	3.750"	5.700"	-16cc	1.425"	9.8:1
Small Block Ford						
Flat Top Pistons						
SRP138734	4.030"	3.000"	5.090"	-5cc	1.600"	9.0:1
SRP140689*	4.030"	3.400"	5.400"	-5cc	1.100"	10.1:1
SRP138730	4.030"	3.500"	5.956"	-5cc	1.774"	10.4:1
Low Compression Pistons						
SRP151868*	4.030"	3.400"	5.400"	-12.5cc	1.100"	9.3:1

Notes: Compression ratios based on the following combustion chambers: SB Chevy: 64cc, SB Ford: 64cc * Oil rail supports included.

Part No.	Bore Size	Stroke	Rod Length	Dish / Dome Volume	Comp. Height	Comp. Ratio
Small Block Chevy						
Flat Top Pistons						
SRP268830	4.030"	3.750"	6.000"	-5cc	1.125"	11.1:1
SRP271055	4.030"	3.750"	5.700"	-5cc	1.425"	11.1:1
SRP271056	4.030"	3.480"	6.000"	-5cc	1.260"	10.3:1
SRP271057	4.030"	3.480"	5.700"	-5cc	1.560"	10.3:1
SRP271063	4.155"	4.000"	6.000"	-5cc	1.000"	12.3:1
SRP271064	4.155"	3.875"	6.000"	-5cc	1.062"	12.0:1
SRP271065	4.155"	3.750"	6.000"	-5cc	1.125"	11.6:1
High Compression Domed Pistons						
SRP271058	4.030"	3.750"	6.000"	7cc	1.125"	12.9:1
SRP271059	4.030"	3.480"	6.000"	11cc	1.260"	12.7:1
SRP271066	4.155"	3.750"	6.000"	4cc	1.125"	13.0:1
Inverted Dome Pistons						
SRP271060	4.030"	4.000"	6.000"	-16cc	1.000"	10.4:1
SRP271067	4.155"	4.000"	6.000"	-16cc	1.000"	10.9:1
SRP271068	4.155"	3.875"	6.000"	-16cc	1.062"	10.6:1
SRP271069	4.155"	3.750"	6.000"	-16cc	1.125"	10.3:1
Small Block Ford						
Flat Top Pistons						
SRP271099	4.030"	3.400"	5.400"	-5cc	1.100"	10.1:1

Notes: Compression ratios are based on the following combustion chambers: SB Chevy: 64cc, SB Ford: 64cc

SAFECRAFT

SAFETY EQUIPMENT

Model AT10 NASCAR Automatic Discharge Fire Protection System **SFCAT10BEG**

Automatic, thermally actuated extinguisher discharges when a temperature of 286°F is reached. FE36-charged 10 lb. unit is typically used to protect fuel cells. Mounting brackets and installation hardware must be purchased separately.

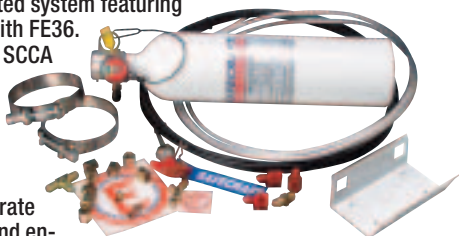


Model LT Installed Vehicle Fire Protection Systems

Safecraft's lightest fire protection systems are used by many professional circle track teams. LT systems feature a white powder coated 5 or 10 lb. bottle with billet aluminum activation head. Two separate discharge outlets allow running lines to both the driver and the engine or fuel cell area. The bottle has a slim profile and swivel head for quick and easy installation.

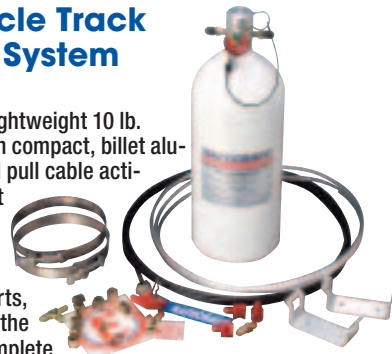
Model LT5 Circle Track Fire Protection System **SFCLT5HAA**

A pull cable activated system featuring a 5 lb. bottle filled with FE36. System meets strict SCCA requirements and SFI 17.1 certification. The discharge head includes two separate discharge ports, allowing separate lines for the driver and engine. Kit includes white powder coated charged extinguisher, aluminum mounting bracket, aircraft "T"-bar clamps, 10' of aluminum discharge line, three spray nozzles with fittings, 15' pull cable and installation hardware.



Model LT10 Circle Track Fire Protection System **SFCLT10HAA**

LT10 system features a lightweight 10 lb. FE36-charged cylinder with compact, billet aluminum discharge head and pull cable activation. System meets strict SCCA requirements and SFI 17.1 certification. The discharge head includes two separate discharge ports, allowing separate lines for the driver and engine. Sold complete with white powder coated charged extinguisher, aircraft "T"-bar clamps, 10' of aluminum discharge line, three spray nozzles with fittings, 15' pull cable and installation hardware.



Model LT Replacement Components

Part No. Description
 SFC54-1431 Mount Brackets (2), Model LT10, Surface Mount
 SFC54-1435 Mount Brackets (2), Model LT5, Seat Mount
 SFC54-1475-1 Mount "T"-Bolt Clamps (2), Model LT5
 SFC54-1500 Seat Mount Bracket, Pull Cable
 SFC54-2001 Aluminum Discharge Tubing Kit, 1/4" O.D. x 10'
 SFC54-2002 Steel Discharge Tubing Kit, 1/4" O.D. x 10'
 SFC56-1421 Pull Cable Assembly With Safety, 15', All Models
 SFCLT5HA-SFI LT5 Replacement 5 Lb. Bottle, FE36, SFI 17.1 Certified
 SFCPC2P Polished 2-1/2 Lb. Bottle, FE36

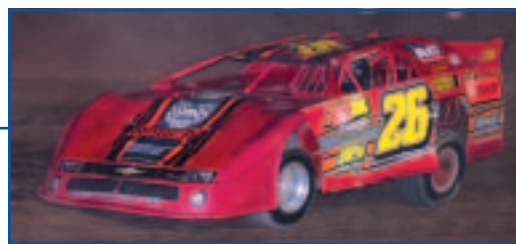


4340 Forged Stock Replacement I-Beam Connecting Rods

Scat forged 4340 I-beam connecting rods are profiled for added clearance and weight reduction. Available in press fit and bushed versions. Rods are sold in balanced sets of eight.



Part No.	Description	Length	Journal	Pin
SB Chevy				
SCA3-ICR5700	Bushed	5.700"	2.100"	.927"
SCA3-ICR5700P	Press Fit	5.700"	2.100"	.927"
SCA3-ICR6000	Bushed	6.000"	2.100"	.927"



Bill Lewis

4340 Forged Pro Stock I-Beam Connecting Rods

Available for Chevy and Ford engines. Rods have dowel pins for precise fit and 12-point ARP cap screws. Available in press fit and bushed versions. Sold in balanced sets of eight.



Part No.	Description	Length	Journal	Pin
SB Chevy				
SCA2-ICR5700-2000*	Bushed	5.700"	2.000"	.927"
SCA2-ICR5700P	Press Fit	5.700"	2.100"	.927"
SCA2-ICR5700	Bushed	5.700"	2.100"	.927"
SCA2-ICR5700-7/16†	Bushed	5.700"	2.100"	.927"
SCA2-ICR6000-2000*	Bushed	6.000"	2.000"	.927"
SCA2-ICR6000	Bushed	6.000"	2.100"	.927"
SCA2-ICR6000-7/16†	Bushed	6.000"	2.100"	.927"
SB Ford 302				
SCA2-ICR5400-927	Press Fit (Chevy Pin)	5.400"	2.123"	.927"

† Premium Pro Comp rods with 7/16" fasteners.

* Small rod journal 2.000" crankshaft



Kenny Head

Photos By: John Berglund



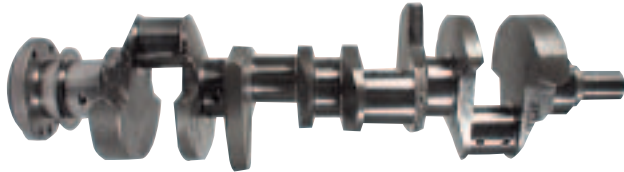
4340 Forged H-Beam Connecting Rods

Profiled H-beam connecting rods are compatible with many popular stroker engines and the doweled caps provide a superb fit. All rods are fitted with ARP bolts and sold in balanced sets of eight.



Part No.	Description	Length	Journal	Pin
SB Chevy				
SCA2-350-5700-2100	Bushed	5.700"	2.100"	.927"
SCA2-350-6000-2100	Bushed	6.000"	2.100"	.927"
SB Ford 302				
SCA2-302-5400-2123-927	Bushed	5.400"	2.123"	.927"

Series 9000 Cast Pro Comp Crankshafts

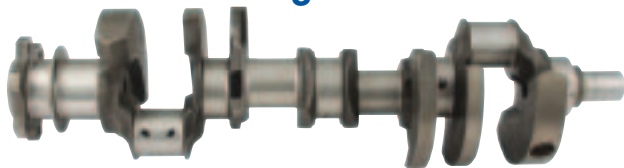


Crankshafts for mild racing applications have Aero-wing counterweights, fully chamfered oil holes, .125" fillet radius on all journals, shot-peened surfaces for increased strength, knife edged counterweights, lightening holes in all rod throws and a full round rear flange. Also available in lightweight versions.

Part No.	Description	Stroke	Rod Length	Rod Journal
SB Chevy 350				
SCA9-350-3480-5700	Pro Comp	3.480"	5.700"	2.100"
SCA9-350-3750-5700	Pro Comp	3.750"	5.700"	2.100"
SCA9-350-3750-5700-L†	Pro Comp	3.750"	5.700"	2.100"
SCA9-350-3750-6000	Pro Comp	3.750"	6.000"	2.100"
SB Chevy 400				
SCA9-400-3500-6000	Pro Comp	3.500"	6.000"	2.100"
SCA9-400-3750-5700	Pro Comp	3.750"	5.700"	2.100"
SCA9-400-3750-6000	Pro Comp	3.750"	6.000"	2.100"
SB Ford 302				
SCA9-302-3400-5400-2123*	Pro Comp	3.400"	5.400"	2.123"
SB Ford 351W				
SCA9-351-385-5955-2311W*	Pro Comp	3.850"	5.955"	2.311"

† 1-piece rear main seal. * Use 28 Oz. Balancer.

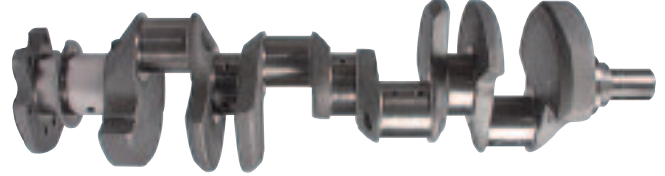
F43 Series 4340 Forged Steel Crankshafts



Forged, 4340 steel crankshafts are exceptionally light (just 40-42 lbs.), with pendulum cut and profiled counterweights and gun-drilled main line holes. Crankshafts are nitride hardened for increased wear resistance. Straight shot, chamfered oil holes improve lubrication.

Part No.	Description	Stroke	Rod Length	Rod Journal
SB Chevy 350				
SCA4-350-3480-5700-18LW	Honda Journal, 2-Pc. Rear Seal	3.480"	5.700"	1.888"
SCA4-350-3480-5700-20LW	Sm. Journal, 2-Pc. Rear Seal	3.480"	5.700"	2.000"
SCA4-350-3480-5700-21LW	Lg. Journal, 2-Pc. Rear Seal	3.480"	5.700"	2.100"
SCA4-350-3500-5700-18LW	Honda Journal, 2-Pc. Rear Seal	3.500"	5.700"	1.888"
SCA4-350-3500-5700-21LW	Lg. Journal, 2-Pc. Rear Seal	3.500"	5.700"	2.100"
SCA4-350-3750-6000-21LW	Lg. Journal, 2-Pc. Rear Seal	3.750"	6.000"	2.100"
SB Chevy 400				
SCA4-400-4000-6000-21LW	Lg. Journal, 2-Pc. Rear Seal	4.000"	6.000"	2.100"

4340 Forged Steel Crankshafts



Crankshafts are Nitride hardened and straightened, with large fillet radius on all journals for increased lubrication. All rod journals have lightening holes. Each crank has straight shot, back-drilled oiling for maximum efficiency. Available in standard, lightweight and superlight models. Lightweight cranks are knife-edged and profiled for weight reduction. Superlight cranks feature pendulum undercut counterweights for additional weight reduction. All cranks are micropolished and inspected.

Part No.	Description	Stroke	Rod Length	Rod Journal
SB Chevy 350				
SCA4-350-3480-5700	Standard	3.480"	5.700"	2.100"
SCA4-350-3480-5700-2	Lightweight	3.480"	5.700"	2.100"
SCA4-350-3500-5700-2	Lightweight	3.500"	5.700"	2.100"
SCA4-350-3500-5700-3	Superlight	3.500"	5.700"	2.100"
SCA4-350-3500-5700-3-2*	Superlight	3.500"	5.700"	2.000"
SCA4-350-3750-5700	Standard	3.750"	5.700"	2.100"
SCA4-350-3750-5700-L†	Standard	3.750"	5.700"	2.100"
SCA4-350-3750-6000	Standard	3.750"	6.000"	2.100"
SCA4-350-3750-6000-2	Lightweight	3.750"	6.000"	2.100"
SCA4-350-3750-6000-3	Superlight	3.750"	6.000"	2.100"
SCA4-350-3875-6000	Standard	3.875"	6.000"	2.100"
SCA4-350-4000-6000	Standard	4.000"	6.000"	2.100"
SB Chevy 400				
SCA4-400-3500-6000	Standard	3.500"	6.000"	2.100"
SCA4-400-3750-5700	Standard	3.750"	5.700"	2.100"
SCA4-400-3750-6000	Standard	3.750"	6.000"	2.100"
SCA4-400-3750-6000-2	Lightweight	3.750"	6.000"	2.100"
SCA4-400-3750-6000-3	Superlight	3.750"	6.000"	2.100"
SCA4-400-3875-6000	Standard	3.875"	6.000"	2.100"
SB Ford 302				
SCA4-302-3000-5090-2123	Standard	3.000"	5.090"	2.123"
SCA4-302-3250-5400-2123	Standard	3.250"	5.400"	2.123"
SCA4-302-3400-5400-2123	Standard	3.400"	5.400"	2.123"
SCA4-302-3400-54-2123-2	Lightweight	3.400"	5.400"	2.123"

* Small rod journal 2.000" crankshaft. † 1-piece rear main seal.

SFI-Approved Flexplates

Extra thick flexplates have double welded ring gears for added strength and are gold anodized for corrosion resistance. Flexplates meet SFI 29.1 specifications.



Part No.	Description	Balance	Tooth	Notes
SCAFP-305-SFI	SB Chevy	Internal	153	-
SCAFP-350-SFI	SB Chevy	Internal	168	-
SCAFP-350L-153-SFI	SB Chevy	External	153	1-Pc. Rear Seal
SCAFP-350L-SFI	SB Chevy	External	168	1-Pc. Rear Seal
SCAFP-400-SFI	SB Chevy	External	168	-
SCAFP-302-157-SFI	SB Ford	External (28.2 oz.)	157	10.5" Bolt Circle
SCAFP-302E-SFI	SB Ford	External (28.2 oz.)	164	11.5" Bolt Circle
SCAFP-302L-SFI	SB Ford	External (50.5 oz.)	164	11.5" Bolt Circle

Modified Headers

Mid-Length Primary Style Headers

Mid-length primary headers for small block Chevy offer a compromise between low end torque and high RPM horsepower. Headers fits Dirt Works, GRT, Hoffman, Jet, Larry Shaw and BMS chassis.



Standard Part No.	Spread Port Part No.	18° Part No.	Description	Primary Tube Dia.	Collector Dia.
Small Block Chevy					
SCH1105	-	-	Chevy Headers	1-5/8"	3"
SCH1105V	-	-	"Step" Headers	1-5/8"-1-3/4"	3-1/2"
SCH1105V-3	-	-	"Step" Headers	1-5/8"-1-3/4"	3"
SCH1106	SCH1106SP	-	Chevy Headers	1-3/4"	3-1/2"
SCH1106V	-	SCH1106V18	"Step" Headers	1-3/4"-1-7/8"	3-1/2"

Long-Tube Primary Style Headers

Modified headers with longer primary tubes add torque and horsepower. Available for a variety of small block Chevy and small block Ford applications.



Fits BMS, Dirtworks, Hoffman, Hot, Jet, KMOD, Pierce, Pro, Quick, Sardeson, Smiley's, Victory

Standard Part No.	Spread Port Part No.	18° Part No.	Description	Primary Tube Dia.	Collector Dia. x Length
Small Block Chevy					
SCH1185V	-	-	"Step" Headers	1-5/8"-1-3/4"	3-1/2" x 8"
SCH1186	SCH1186SP	-	Chevy Headers	1-3/4"	3-1/2" x 8"
SCH1186V	SCH1186VSP	SCH1186V18	"Step" Headers	1-3/4"-1-7/8"	3-1/2" x 9"

Small Block Ford - Standard Windsor

Standard Part No.	"N" Head Part No.	Description	Primary Tube Dia.	Collector Dia. x Length
SCH3186	SCH3186N	Ford Headers	1-3/4"	3-1/2" x 8"

Fit BMS, Hughes, Larry Shaw, TRE

Standard Part No.	Spread Port Part No.	18° Part No.	Description	Primary Tube Dia.	Collector Dia. x Length
Small Block Chevy					
SCH1146V	-	-	"Step" Headers	1-3/4"-1-7/8"	3-1/2" x 9"

Tri-Y Headers

Four-into-two-into-one configuration combined with "stepped" primary tubes delivers increased torque. Available for standard, spread port 18° small block Chevy.



Fits Harris, Hoffman, J-Car, Impressive, Bob Pierce and Victory chassis

Standard Part No.	Spread Port Part No.	18° Part No.	Description	Primary Tube Dia.	Collector Dia.
Small Block Chevy					
SCH1185VY	-	-	"Step" Headers	1-5/8"-1-3/4"	3"
SCH1186VY	SCH1186VYSP	SCH1186VY18	"Step" Headers	1-3/4"-1-7/8"	3-1/2"

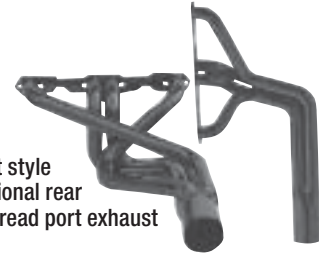
Fits Larry Shaw, J-Car And Elite Chassis

Small Block Chevy					
SCH1195VY	-	-	"Step" Headers	1-5/8"-1-3/4"	3"

Long Tube Headers

(LH Straight Out/RH Rear Exit)

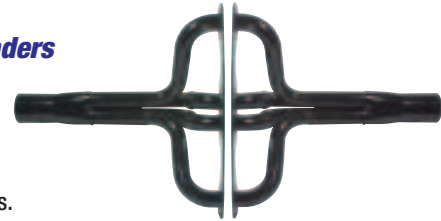
Left side header is a straight-out style and right side header is a conventional rear exit. Available for standard and spread port exhaust small block Chevys.



Standard Part No.	Spread Port Part No.	Description	Primary Tube Dia.	Collector Dia. x Length
SCH1172	-	Chevy Headers	1-3/4"	3-1/2" x 8"
SCH1172V	-	"Step" Headers	1-3/4"-1-7/8"	3-1/2" x 9"
SCH1176	SCH1176SP	Chevy Headers	1-3/4"	3-1/2" x 8"
SCH1176V	-	"Step" Headers	1-3/4"-1-7/8"	3-1/2" x 9"

Straight-Out Headers

One-piece headers utilize a straight-out primary tube and collector. Small block Chevy headers are for standard exhaust ports.



Part No.	Description	Primary Tube Dia.	Collector Dia. x Length
SCH161	Chevy Headers	1-5/8"	3" x 8"
SCH162	Chevy Headers	1-3/4"	3-1/2" x 8"

Straight-Out Short Headers

Small block Chevy Modified headers have short primary tubes for crisp throttle response and a flatter torque curve. Available in standard and spread port design.



Standard Part No.	Spread Port Part No.	Description	Primary Tube Dia.	Collector Dia. x Length
SCH162B	SCH162BSP	Chevy Headers	1-3/4"	3-1/2" x 8"
SCH163B	-	Chevy Headers	1-7/8"	3-1/2" x 9"

Angle Back Headers

One-piece, angle back headers fit most popular Modified chassis. Offered for small block Chevys only in standard and spread port design.



Standard Part No.	Spread Port Part No.	Description	Primary Tube Dia.	Collector Dia. x Length
SCH171	-	Chevy Headers	1-5/8"	3" x 8"
SCH172	SCH172SP	Chevy Headers	1-3/4"	3-1/2" x 8"
SCH173	-	Chevy Headers	1-7/8"	3-1/2" x 9"

Exhaust Header Suffix Designation Guide

Suffix	Description
V	"Stepped" Primary Tubes
CM	Crate Motor Application
SP	Spread Port Application
N	Ford "N" Head Application
18	18° Chevy



Modified Headers (Continued)

Two-Piece Adjustable Headers

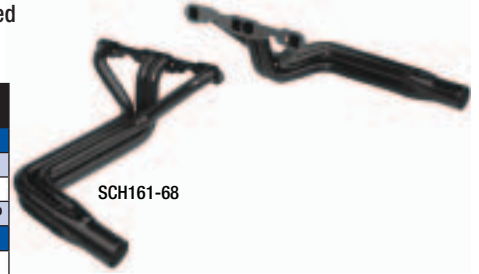
Headers have removable collectors and employ a "stepped" primary tube design for increased horsepower and torque. Adjustable feature means existing collectors may be replaced with different slip-over collectors to allow adjustment of engine location.

Description	Primary Tube Dia.	Collector Dia. x Length	LH-Style 3 RH-Style 8	LH-Style 6 RH-Style 8	LH-Style 9 RH-Style 8	LH-Style 9H RH-Style 8
Small Block Chevy						
Standard Chevy	1-5/8"-1-3/4"	3" x 8"	SCH161-38	SCH161-68	SCH161-98	SCH161-98H
Standard Chevy	1-3/4"-1-7/8"	3-1/2" x 9"	SCH162-38	SCH162-68	SCH162-98	SCH162-98H
Spread Port	1-3/4"-1-7/8"	3-1/2" x 9"	SCH162-38SP	SCH162-68SP	SCH162-98SP	SCH162-98HSP
SB Chevy Gen. III						
LS1	1-3/4"-1-7/8"	3-1/2" x 9"	-	-	SCH162-98LS1	-
Small Block Ford						
Windsor	1-5/8"-1-3/4"	3" x 8"	-	SCH361-68	-	-
Dart/"N" Head	1-3/4"-1-7/8"	3-1/2" x 9"	-	SCH362-68N	-	-

Note: Use chart below as reference for collector styles.

Replacement Adjustable Slip-Over Collectors

Style 3	Style 6	Style 8	Style 9	Style 9H	Tube Dia. I.D.	Collector Dia.	No. Of Tubes
SCHS063043	SCHS063046	SCHS063048	SCHS063049	SCHS063049H	1-5/8"	3"	4
-	-	-	SCHS073049	SCHS073049H	1-3/4"	3"	4
-	-	-	-	SCHS063549H	1-5/8"	3-1/2"	4
SCHS073543	SCHS073546	SCHS073548	SCHS073549	SCHS073549H	1-3/4"	3-1/2"	4



Street Stock Headers

Camaro/Monte Carlo Headers

Conventional style headers fit small block Chevys in 1970-81 Camaro/Firebird, 1972-77 Monte Carlo and 1975-79 Nova with the engine in stock or set back location. Headers clear side and rear engine mounts and will fit straight or angle plug, standard exhaust port heads (unless noted).



Part No.	Description	Primary Tube Dia.	Collector Dia. x Length
SCH165A*	Chevy Headers	1-5/8"	3" x 8"
SCH165VA*	"Step" Headers	1-5/8"-1-3/4"	3" x 8"
SCH166A*	Chevy Headers	1-3/4"	3-1/2" x 8"
SCH166**	Chevy Headers	1-3/4"	3-1/2" x 8"

* For straight or angle plug heads, solid side and rear mounts, stock clutch linkage and short oil filter.

** Conventional style headers for cars with engine in stock location or set back. Will not clear rear mounts. Will not fit angle plug heads.

Stock Clip Headers

Headers exit over frame rails and are not compatible with stock firewalls or A-frames. Headers are available to fit standard exhaust ports only.



Part No.	Description	Primary Tube Dia.	Collector Dia./Length
SCH126†	Chevy Headers, RH Rear Exit	1-3/4"	3-1/2" x 8"
SCH155††	Chevy Headers, Exit At 45° Angle	1-5/8"	3" x 8"
SCH155V††	"Step" Headers	1-5/8"-1-3/4"	3-1/2" x 8"
SCH156††	Chevy Headers, Exit At 45° Angle	1-3/4"	3-1/2" x 8"

† Engine must be moved back.

†† Will not fit with stock firewall. Firewall may need to be altered.

GM "A"/"F"/"G" Body Headers

Popular street stock headers to fit small block Chevy engines in 1972-87 GM "A"/"G" Body (Malibu/Monte Carlo/Grand Prix/Regal/Cutlass) as well as 1970-81 Chevy Camaro/Pontiac Firebird "F" body. Headers clear side and rear engine mounts, and fit straight or angle plug, standard exhaust port cylinder heads. Must use short (FRAPH30) oil filter.



Standard Part No.	Grate Motor Part No.	Description	Primary Tube Dia.	Collector Dia. x Length
SCH185	SCH185CM	Chevy Headers	1-5/8"	3" x 8"
SCH185M*	-	Chevy Headers	1-5/8"	3" x 8"
SCH185V	-	"Step" Headers	1-5/8"-1-3/4"	3" x 8"
SCH186	-	Chevy Headers	1-3/4"	3-1/2" x 8"
SCH186V	-	"Step" Headers	1-3/4"-1-7/8"	3-1/2" x 9"
SCH186-3	-	Chevy Headers	1-3/4"	3" x 8"
SCH186M-3†	-	Chevy Headers	1-3/4"	3" x 8"
SCH187	-	Chevy Headers	1-7/8"	3-1/2" x 9"

* Must use short oil filter. Will clear stock manual clutch linkage ball.

† Fits 1970-81 camaro. Must use short oil filter. Will clear stock manual clutch linkage ball.

Stock Clip Fender Exit Headers

Eliminates clearance problems when using chassis style headers on 1970-81 Camaro and 1978-82 GM metric clip cars. Small block Chevy over the frame style headers exits out at mid-fender and are compatible with the stock firewall and upper A-frames with the engine in the stock location.

Part No.	Description	Primary Tube Dia.	Collector Dia. x Length
SCH103	1970-81 Camaro Headers	1-5/8"	3" x 8"
SCH104	1970-81 Camaro Headers	1-3/4"	3-1/2" x 8"
SCH107	1978-82 GM Metric Headers	1-5/8"	3" x 8"
SCH108	1978-82 GM Metric Headers	1-3/4"	3-1/2" x 8"



Dirt Late Model Headers

Schoenfeld's headers for small block Chevy-powered dirt late models have long primary tubes for maximum torque and horsepower. Available in traditional and stepped tube design. Stepped tubes increase exhaust velocity, horsepower and torque. Most headers are available in standard or spread exhaust port. Headers are also available for crate motor applications.

Mastersbilt And Warrior Chassis

Both headers go over the frame.

Standard Chevy Part No.	Crate Motor Part No.	Spread Port Part No.	Chevy 18° Part No.	Primary Tube Dia.	Collector Dia. x Length
-	SCH141-505LVGCM-3	-	-	1-5/8"-1-3/4"	3" x 8"
SCH142-505LVG	-	SCH142-505LVGSP	SCH142-505LVG18	1-3/4"-1-7/8"	3-1/2" x 9"

Rocket Chassis

Both headers go over the frame.

Standard Chevy Part No.	Crate Motor Part No.	Spread Port Part No.	Chevy 18° Part No.	Primary Tube Dia.	Collector Dia. x Length
SCH141-525LV	-	-	-	1-5/8"-1-3/4"	3-1/2" x 8"
-	SCH141-525LVCM-3	-	-	1-5/8"-1-3/4"	3" x 8"
SCH142-525L	SCH142-525LCM	-	-	1-3/4"	3-1/2" x 8"
SCH142-525LV	-	SCH142-525LVSP	SCH142-525LV18	1-3/4"-1-7/8"	3-1/2" x 9"
SCH143-525LV	-	SCH143-525LVSP	-	1-7/8"-2"	3-1/2" x 9"

American Made, Barry Wright, Bullitt, GRT, Larry Shaw, Raider, Rayburn, Stinger And TNT Chassis

Both headers go over the frame.

Standard Chevy Part No.	Crate Motor Part No.	Spread Port Part No.	Chevy 18° Part No.	Primary Tube Dia.	Collector Dia. x Length
SCH141-605LVG	-	-	-	1-5/8"-1-3/4"	3-1/2" x 8"
SCH141-605LVG-3	SCH141-605LVGCM-3	-	-	1-5/8"-1-3/4"	3" x 8"
SCH142-605LG	-	SCH142-605LGSP	-	1-3/4"	3-1/2" x 8"
SCH142-605LVG	-	SCH142-605LVGSP	SCH142-605LVG18	1-3/4"-1-7/8"	3-1/2" x 9"
SCH143-605LVG	-	SCH143-605LVGSP	-	1-7/8"-2"	3-1/2" x 9"

GM LS Crate Motor

Designed specifically for dirt late models fitted with GM LS series crate engines. Will not fit GRT computer car.

Part No.	Description	Primary Tube Dia.	Collector Dia. x Length
SCH142-525LLS1	"525" Offset, Bernheisel, Rocket	1-3/4"	3-1/2" x 8"
SCH142-605LGLS1	"605" Offset, Bullitt, GRT, Shaw, Rayburn, Warrior	1-3/4"	3-1/2" x 8"

New Design Crate Motor **NEW!**

Specifically designed for Dirt Late Models fitted with popular small block Chevy crate motors. The 24" (from head surface to inside of left collector) headers fit Rocket and 2012 Barry Wright chassis, while the 26" fit Barry Wright, Bernheisel, GRT, Larry Shaw, Raider, Rayburn, Mastersbuilt, Stinger, TNT and Warrior.

Crate Motor 24" To I/S	Crate Motor 26" To I/S	Primary Tube Dia.	Collector Dia.
SCH181-406LV3GCM-3	SCH181-606LV3GCM-3	1-5/8"-1-3/4"-1-7/8"	3"
SCH182-406LVGCM-3	SCH182-606LVGCM-3	1-3/4"-1-7/8"	3"

Tri-Y

Small block Chevy Tri-Y headers have a four-into-two-into-one tube configuration for increased torque and horsepower.

American Made, Barry Wright, Bullitt, GRT, Larry Shaw, Raider, Rayburn, Stinger And TNT Chassis

Both headers go over the frame.

Standard Chevy Part No.	Spread Port Part No.	Chevy 18° Part No.	Primary Tube Dia.	Collector Dia.
SCH14260VY	SCH14260VYSP	SCH14260VY18	1-3/4"-1-7/8"	3-1/2"

D.I.R.T. Modified Headers Cab Forward Style Headers

Small block Chevy-powered, D.I.R.T. Modified Headers use a cab forward design for added muffler clearance. Headers are compatible with Bicknell, Olsen, TEO and Troyer chassis.

Standard Part No.	Crate Motor Part No.	Description	Primary Tube Dia.	Collector Dia. x Length
SCH1122B [§]	SCH1122BCM	Chevy Headers	1-5/8"	3" x 8"
SCH1122BV-3	-	"Step" Headers	1-5/8"-1-3/4"	3" x 8"
SCH1124BV	-	"Step" Headers	1-3/4"-1-7/8"	3-1/2" x 9"

[§] Spec. header for D.I.R.T. Sportsman division.





Chassis Headers

Late Model/Sportsman Headers

Headers fit small block Chevy engines in older Bullitt, GRT, Howe, NASCAR LMS, Shaw and most IMCA Modifieds. Headers, with an "E" suffix have equal length primary tubes. Available for standard exhaust port small block Chevy only.

Standard Part No.	Equal Length Part No.	Crate Motor Part No.	Description	Primary Tube Dia.	Collector Dia. x Length
SCH151†	SCH151E†	—	Chevy Headers	1-5/8"	3" x 8"
—	SCH151EL†	SCH151ELCM†	Chevy Headers, Long/30" Primaries	1-5/8"	3" x 8"
—	SCH151EV	—	"Step" Headers	1-5/8"-1-3/4"	3-1/2" x 8"
SCH152	SCH152E	—	Chevy Headers	1-3/4"	3-1/2" x 8"
—	SCH152EV	—	"Step" Headers	1-3/4"-1-7/8"	3-1/2" x 9"
SCH153	—	—	Chevy Headers	1-7/8"	3-1/2" x 9"

† NASCAR LMS legal.



Asphalt Late Model Headers

Conventional Crossover Headers

Conventional crossover style headers fit Bemco, Hamke, Port City, Lefthander, Coleman and Howe chassis. Available to fit Chevy and Ford small block engines.

Standard Part No.	"H" Style Part No.	Description	Primary Tube Dia.	Collector Dia. x Length
Small Block Chevy				
SCH135	SCH135H*	Chevy Headers	1-5/8"	3" x 8"
SCH135V	SCH135VH*	"Step" Headers	1-5/8"-1-3/4"	3-1/2" x 8"
SCH135V-3	—	"Step" Headers	1-5/8"-1-3/4"	3" x 8"
SCH136	SCH136H*	Chevy Headers	1-3/4"	3-1/2" x 8"
SCH136V	SCH136VH*	"Step" Headers	1-3/4"-1-7/8"	3-1/2" x 9"
—	SCH136VH-18*	18" "Step" Headers	1-3/4"-1-7/8"	3-1/2" x 9"
Small Block Ford				
SCH335	—	Windsor Headers	1-5/8"	3" x 8"

* "H" Style headers fit Howe, Port City and Stock Clip Cars (#7 tube extended toward the rear and angled for clearance of foot box and chassis bars).



Crate Motor Crossover Headers

Fits crate engines in Bemco, Hamke, Howe, Lefthander and Port City Chassis.

Vortec/Fast Burn Part No.	"H" Style Part No.	Description	Primary Tube Dia.	Collector Dia. x Length
SCH135CM	SCH135HCM*	Chevy Headers	1-5/8"	3" x 8"
SCH135VCM-3	SCH135VHCM-3*	"Step" Headers	1-5/8"-1-3/4"	3-1/2" x 8"

* "H" Style headers fit Howe, Port City and Stock Clip Cars (#7 tube extended toward the rear and angled for clearance of foot box and chassis bars).



Conventional Crossover Headers

Small block Chevy headers extend away from the cylinder head and wrap behind the engine. Available for standard exhaust port engines only.

Standard Part No.	Crate Motor Part No.	Description	Primary Tube Dia.	Collector Dia. x Length
Lower RH Door Exit				
SCH145	—	Chevy Headers	1-5/8"	3" x 8"
SCH145V	—	"Step" Headers	1-5/8"-1-3/4"	3-1/2" x 8"
—	SCH145VCM-3	"Step" Headers	1-5/8"-1-3/4"	3" x 8"
SCH146	—	Chevy Headers	1-3/4"	3-1/2" x 8"
SCH146V	—	"Step" Headers	1-3/4"-1-7/8"	3-1/2" x 9"



Tri-Y Crossover Headers SCH135VYCM

For small block Chevy crate motors with Vortec cylinder heads, crossover headers feature a 4-into-2-into-1 tri-Y configuration for increased torque. Headers include "stepped", 1-5/8"-1-3/4" primary tubes and 3" dia. collectors. Fits Hamke, Howe, Lefthander and Port City chassis.



180° Crossover Headers

"H" series headers fit small block Chevy in Howe, Port City, Lefthander offset chassis and earlier straight up models. "D"-series headers listed below fit small block Chevy in Dillon or Larry Phillips chassis.

"H" Series Part No.	"D" Series Part No.	Description	Primary Tube Dia.	Collector Dia. x Length
SCHH179V	—	"Step" Headers	1-5/8"-1-3/4"	3-1/2" x 9"
SCHH180	SCHD180	Chevy Headers	1-3/4"	3-1/2" x 9"
SCHH180V	—	"Step" Headers	1-3/4"-1-7/8"	3-1/2" x 9"
SCHH180V3	—	"3-Step" Headers	1-3/4"-1-7/8"-2"	3-1/2" x 9"



Lower RH Door Exit

Headers are compatible with a stock bellhousing and use 48" extensions. Applications available to fit standard exhaust port small block Chevy engines.

Part No.	Description	Primary Tube Dia.	Collector Dia. x Length
SCH179-1	Chevy Headers	1-5/8"	3" x 8"
SCH180-1	Chevy Headers	1-3/4"	3-1/2" x 9"





2000/2300cc 4 Cyl. Ford Pinto Headers

Schoenfeld offers several different headers with stepped primaries which increase exhaust velocity for added horsepower and torque with the popular 2000/2300cc Ford engines.

Tri-Y Header SCHF233VY

Tri-Y header with stepped 1-5/8" – 1-3/4" primaries and 3" collectors, have a four-into-two-into-one configuration for increased torque. Fits 2300cc engines only.



"Pro Four" Tube Chassis Headers

Headers are engineered for modified, chassis type cars.



2000cc Part No.	2300cc Part No.	Description	Primary Tube Dia.	Collector Dia. x Length
-	SCHF234V	"Step" Header	1-1/2"-1-5/8"	3" x 8"
SCHF205V	SCHF235V	"Step" Header	1-5/8"-1-3/4"	3" x 8"

Production Chassis Headers

Headers are engineered for production chassis including 2.3-powered Pinto or Mustang.



2300cc Part No.	Description	Primary Tube Dia.	Collector Dia. x Length
SCHF238V	"Step" Header	1-1/2"-1-5/8"	3" x 8"
SCHF239V	"Step" Header	1-5/8"-1-3/4"	3" x 8"

Racing Mufflers



Part No.	Length	Core Dia.	Inlet Dia.	Body Dia.	Special Notes
SCH63030	6"	3"	3"	3-1/2"	-
SCH63535	6"	3-1/2"	3-1/2"	4"	-
SCH83030	8"	3"	3"	3-1/2"	-
SCH83535	8"	3-1/2"	3-1/2"	4"	-
SCH92535	9"	3-1/2"	3-1/2"	4-3/8"	-
SCH103535K	10"	3"	3-1/2"	4"	-
SCH112530	11"	2-1/2"	3"	4"	305 Sprint
SCH112535	11"	2-1/2"	3-1/2"	4-3/8"	Mandatory @ Allstars, ASCS and WoO Sprints
SCH113035	11"	3"	3-1/2"	-	-
SCH123535	12"	3-1/2"	3-1/2"	4"	-
SCH183535	18"	3-1/2"	3-1/2"	4"	-
SCH14272535	14"	4-1/2"	3-1/2"	3-1/2"	California Approved

IMCA Spec Muffler SCHIMCA609

Insert style mufflers are 6" long, with a 3" O.D. flange on one end and a 3.5" O.D. flange on the other so they will work with 3" or 3.5" O.D. collectors. Sold individually.



Insert Mufflers

Lightweight 4" long mufflers insert into exhaust tubing or collector. Perfect quick-fix when car is too loud!

Part No.	Description
SCH42530	2.5" Core Fits 3" Collector
SCH43035	3" Core Fits 3.5" Collector
SCH43540	3.5" Core Fits 4" Collector



Header Gaskets

The same gaskets that are packed with Schoenfeld headers. Sold individually.



Part No.	Description
SCH01501	SB Chevy, 1-5/8" Square
SCH01511	SB Chevy, 1-3/4" "D" Port
SCH0152	SB Chevy, Stahl Pattern
SCH01533	SB Chevy, Brodix Spread Port "D" Shape
SCH01560	SB Chevy, Crate Motor
SCH01780	SB Chevy Gen. III LS1
SCH03500	SB Ford 289-351W, GT-40
SCH03520	SB Ford SVO "N"/Dart
SCHFG23	Ford 4 Cyl. 2300

Slip-On 4-Tube Collectors

Part No.	Description
SCHS003541	Fits 2" Primaries, 3-1/2" Collector
SCHS063041	Fits 1-5/8" Primaries, 3" Collector
SCHS073041	Fits 1-3/4" Primaries, 3" Collector
SCHS073541	Fits 1-3/4" Primaries, 3-1/2" Collector
SCHS083541	Fits 1-7/8" Primaries, 3-1/2" Collector



X Collector

Diameter	3" Out	3-1/2" Out
3" In	SCHX3030	-
3-1/2" In	-	SCHX3535



Y Collector

Diameter	3-1/2" Out	4" Out	5" Out
3" In	SCHY3035	SCHY3040	SCHY3050
3-1/2" In	SCHY3535	SCHY3540	SCHY3550

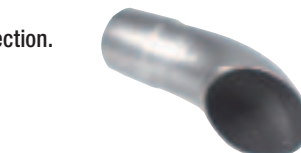


Turn-Outs

Angle the exit of exhaust in any direction.

Part No.	Size	Length
SCH2525	2-1/2"	10"
SCH3025	3"	10"
SCH3026	3"	15-1/2"
SCH3525	3-1/2"	10"
SCH4025*	4"	10-1/2"

*Aluminized



Collector Extensions

Extensions are typically used to increase bottom end torque.

Description	12" Length	24" Length	30" Length	36" Length	48" Length
3" Dia.	SCH120030	SCH240030	-	SCH360030	SCH480030
3-1/2" Dia.	SCH120035	SCH240035	SCH300035	SCH360035	SCH480035





Tailpipe Savers **NEW!**

Attaches to quarter panel neatly, protecting exhaust outlet from damage.



Description	Black Powder Coated Part No.	Silver Powder Coated Part No.
3" Single Outlet	-	SCH300TSS
3" Dual Outlet	SCH300TSB-2	-
4" Single Outlet	SCH400TSB	SCH400TSS
5" Single Outlet	SCH500TSB	SCH500TSS

Header Tab Kit

Typically used to secure slip-on collectors to headers, or to secure collector extensions to collectors. Two tab sets per collector are recommended.



SCH4003-4

Part No. Description
 SCH4003-4Kit Includes (8) Tabs, (4) Bolts, (4) Lock Nuts And (8) Washers **NEW!**
 SCH4003-6Kit Includes (12) Tabs, (6) Bolts, (6) Lock Nuts And (12) Washers

Flanges

Part No. Description
 SCH250CR.....3-Hole, 2-1/2" I.D.
 SCH300CR.....3-Hole, 3" I.D.
 SCH350CR.....3-Hole, 3-1/2" I.D.



U-Bends

Made of 18 gauge steel with 9" legs.

Part No. Description
 SCH016218U.....1-5/8" O.D.
 SCH017518U.....1-3/4" O.D.
 SCH018718U.....1-7/8" O.D.
 SCH020018U.....2" O.D.



Miscellaneous Bends

Approximately 36 feet of bends, useful for header or exhaust system fabrication. Weights 45 lbs.



Part No. Description
 SCHMB175.....1-3/4" Diameter
 SCHMB187.....1-7/8" Diameter

Slip-Together Reducers

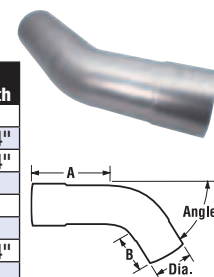
Used to join collector to muffler or other exhaust components.

Part No.	I.D.	O.D.
SCH2530	3"	2-1/2"
SCH2535	3-1/2"	2-1/2"
SCH3030	3"	3"
SCH3035	3-1/2"	3"
SCH3530	3"	3-1/2"
SCH3535	3-1/2"	3-1/2"
SCH4035	4"	3-1/2"



Elbows

Part No.	Dia.	Angle	Center Line Radius	"A" Length	"B" Length
SCH2545	2-1/2"	45°	5-1/4"	6-1/2"	5"
SCH2590	2-1/2"	90°	5-1/4"	5-3/4"	5-3/4"
SCH3031	3"	30°	4"	6-1/2"	6-3/4"
SCH3032	3"	30°	4"	15-1/2"	6"
SCH3042	3"	42°	4"	10"	10"
SCH3045	3"	45°	4"	5"	6"
SCH3090	3"	90°	4"	5"	5-1/4"
SCH3531	3-1/2"	30°	5"	6-1/4"	6"
SCH3532	3-1/2"	30°	5"	15-1/2"	6"
SCH3542	3-1/2"	42°	5"	10"	10"
SCH3545	3-1/2"	45°	5"	6-1/2"	3-1/2"
SCH3590	3-1/2"	90°	5"	5-1/4"	2-3/4"
SCH4090	4"	90°	6"	3"	3"



Sway Bars

CNC-machined from aircraft quality alloy steel for improved memory and consistency, Schroeder gundrilled sway bars offer significant weight savings without negatively impacting performance. The center diameter is made larger so the bar will have the same spring rate as a solid bar, ensuring that no chassis adjustments are necessary when switching from solid to gundrilled bars. Bars are heat treated, and then polished to remove surface imperfections. Shipped in a special screw lock tube for storage and protection.

Part No. Description
 SHR1449HW118 1-1/8" Sway Bar, 1-1/8" Dia., 49 Spline, 400 lbs.
 SHR1449HW114 1-1/4" Sway Bar, 1-1/4" Dia., 49 Spline, 600 lbs.
 SHR1449HW138 1-3/8" Sway Bar, 1-3/8" Dia., 49 Spline, 850 lbs.
 SHR1449HW112 1-1/2" Sway Bar, 1-1/2" Dia., 49 Spline, 1,200 lbs.
 SHR1449HW158 1-5/8" Sway Bar, 1-5/8" Dia., 49 Spline, 1,600 lbs.



Bobby Baillargeon

Photo By: Eric LaFleche

Sway Bar Arms

Designed to be consistent and repeatable, Schroeder sway bar arms are broached in pairs and feature timed splines for perfect alignment.

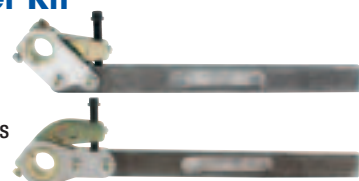
Part No. Description
 SHRSC11415LP25.... Chrome Moly Sway Bar Arm, 15°
 SHRSC1141525A Aluminum Sway Bar Arm, 15°
 SHRSC114SAL Aluminum Sway Bar Arm, Straight



Sway Bar Adjuster Kit

Kit includes a CNC-machined aluminum adjuster and a 17.5" long steel arm. Adjuster is 1-1/4" x 49-splined and available in 30° or zero drop. On cars with limited ground clearance, the zero drop kit positions the arm at the center line of the adjuster for additional ground clearance. Adjustment screw has detents to lock at each half turn.

Part No. Description
 ALL56380..... Sway Bar Adjuster Kit, RH 30° Drop
 ALL56382..... Sway Bar Adjuster Kit, 0° Drop





Race Series

Aluminum Roller Rocker Arms

Blue anodized rocker arms have needle bearing fulcrum assemblies, wide contact roller tips and locking nuts. Sold in sets of 16. May be purchased individually (add -1 at the end of the part number).

Part No. Description

Small Block Chevy 265-400

SPN10001.5 Ratio, 3/8" Stud
SPN10011.5 Ratio, 7/16" Stud
SPN10021.6 Ratio, 3/8" Stud
SPN10031.6 Ratio, 7/16" Stud
SPN10091.65 Ratio, 7/16" Stud
SPN10281.5/1.6 Ratio, 7/16" Stud
SPN10351.5 Ratio, 3/8" Stud, Self-Aligning
SPN10361.6 Ratio, 3/8" Stud, Self-Aligning
SPN10371.5 Ratio, 3/8" Stud, Narrow Body
SPN10381.6 Ratio, 3/8" Stud, Narrow Body



Small Block Ford 289-351W

SPN10171.6 Ratio, 3/8" Stud
SPN10181.6 Ratio, 7/16" Stud
SPN10191.72 Ratio, 3/8" Stud
SPN10201.72 Ratio, 7/16" Stud
SPN10211.6 Ratio, Pedestal Mount
SPN10221.72 Ratio, Pedestal Mount
SPN10611.65 Ratio, 7/16" Stud "N" Head

SPN1017



Hydraulic Lifters

Proprietary formula hardenable cast iron bodied lifters feature mirror-finished cam faces and are engineered to offer precision oil metering and proper oiling to the rocker arms without sacrificing oil pressure. Short travel design lifters offer significantly increased RPM capability over traditional hydraulics. Sold in sets of 16.



Part No. Description

SPN4114Chevy V-8
SPN4114STChevy V-8, Short Travel
SPN4214STFord 221-351W, Short Travel

Mechanical Lifters

Lightweight design lifters utilize proprietary cast iron bodies with mirror-finished cam faces. Large oil reservoirs and precision oil metering supply proper oiling to the rocker arms without sacrificing oil pressure. Sold in sets of 16.



Part No. Description

SPN5115Chevy V-8
SPN51150HChevy V-8, .015" Oil Hole

Pro Series

Aluminum Roller Rocker Arms

The Pro Series is a CNC-machined, narrow bodied rocker arm that clears up to 1.625" diameter valve springs and has centerless ground trunnion, needle bearing fulcrum and smaller, lighter roller tip. Sold in sets of 16.

Part No. Description

Small Block Chevy 265-400

SPN20011.5 Ratio, 7/16" Stud
SPN20031.6 Ratio, 7/16" Stud
SPN3028BL1.5/1.6 Ratio, 7/16" Stud

Small Block Ford 289-351W

SPN20181.6 Ratio, 7/16" Stud
SPN20201.72 Ratio, 7/16" Stud



Replacement Poly Locks

Part No. Description

SPNPL38-43/8" Poly Lock, 4-Pack
SPNPL716-47/16" Poly Lock, 4-Pack



Mechanical Roller Lifters

Lifters use cold-forged steel bodies and precision ground needle roller bearings with high chromium steel axles for extended life and reduced friction. Lightweight lifters utilize precision oil metering for superior oil flow to rocker arms and use a proprietary tie bar system. Sold in sets of 16.



Part No. Description

SPN3116SBRChevy V-8
SPN3216SBRFord 221-351W



Jack Kalwasinski

Photo By: Gary Gasper



AJ Foote



Chris Nash

Photo By: John Berglund



Tom Rutherford

Photo By: Jim DenHamer