



electrical system

Gauge Panels

Gauge panels are completely assembled, pre-wired and include lighted mechanical gauges,



warning indicator lights with senders to alert you of problems, detailed instructions and installation template. Select from panels fitted with Allstar, Stewart Warner, Auto Meter Sport-Comp, Ultra-Lite or Pro-Comp liquid-filled 2-5/8" gauges. Panels are available in two, three, or four gauge configurations.

- Two-Gauge Panels Are 4-1/2" Tall x 7-1/4" Long. Gauges: Oil Pressure And Water Temperature
- Three-Gauge Panels Are 4-1/2" Tall x 10-1/2" Long. Gauges: Oil Pressure, Water Temperature And Oil Temperature Or Fuel Pressure
- Four-Gauge Panels Are 4-1/2" Tall x 13-3/4" Long. Gauges: Oil Pressure, Water Temperature, Oil Temperature And Fuel Pressure.

Note: Fuel pressure isolator such as Autometer ATM5282 or Mallory MAL29806 is recommended when mounting a fuel pressure gauge inside vehicle.

| Part No. | Description |
|--|--|
| Allstar | |
| ALL80090 | 2 Gauge Panel OP/WT |
| ALL80091 | 3 Gauge Panel OP/WT/OT |
| ALL80092 | 3 Gauge Panel OP/WT/FP |
| ALL80093 | 4 Gauge Panel OP/WT/OT/FP |
| Stewart Warner | |
| ALL80100 | 2-Gauge (OP/WT) |
| ALL80102 | 3-Gauge (OP/WT/OT) |
| ALL80103 | 3-Gauge (OP/WT/FP) |
| Auto Meter Sport Comp | |
| ALL80110 | 2-Gauge (OP/WT) |
| ALL80112 | 3-Gauge (OP/WT/OT) |
| ALL80113 | 3-Gauge (OP/WT/FP) |
| ALL80114 | 4-Gauge (OP/WT/OT/FP) |
| Auto Meter Ultra-Lite | |
| ALL80115 | 2-Gauge (OP/WT) |
| ALL80117 | 3-Gauge (OP/WT/OT) |
| ALL80118 | 3-Gauge (OP/WT/FP) |
| ALL80119 | 4-Gauge (OP/WT/OT/FP) |
| Auto Meter Pro-Comp (Liquid Filled) | |
| ALL80120 | 2-Gauge (OP/WT) |
| ALL80122 | 3-Gauge (OP/WT/OT) |
| ALL80123 | 3-Gauge (OP/WT/FP) |
| Replacement Components | |
| ALL80095 | Allstar Oil Pressure Gauge |
| ALL80096 | Allstar Water Temp. Gauge |
| ALL80097 | Allstar Oil Temp. Gauge |
| ALL80098 | Allstar Fuel Pressure Gauge |
| ALL80125 | 2-Gauge Mounting Panel, 4-1/2" x 7-1/4" (OP/WT) |
| ALL80126 | 3-Gauge Mounting Panel, 4-1/2" x 10-1/2" (OP/WT/OT) |
| ALL80127 | 3-Gauge Mounting Panel, 4-1/2" x 10-1/2" (OP/WT/FP) |
| ALL80128 | 4-Gauge Mounting Panel, 4-1/2" x 13-3/4" (OP/WT/OT/FP) |
| ALL80130 | Stewart Warner Oil Pressure Gauge |
| ALL80131 | Stewart Warner Oil Temperature Gauge |
| ALL80132 | Stewart Warner Water Temperature Gauge |
| ALL80133 | Stewart Warner Fuel Pressure Gauge |
| ALL80134 | Auto Meter Fuel Pressure Gauge Sport Comp 15 PSI |
| ALL80135 | Auto Meter Fuel Pressure Gauge Ultra Lite 15 PSI |
| ALL80136 | Auto Meter Fuel Pressure Gauge Pro Comp 15 PSI |
| ALL99056 | Oil Temperature Switch 280°F |
| ALL99057 | Water Temperature Switch 235°F |
| ALL99058 | Fuel Pressure Switch 4 PSI |
| ALL99059 | Oil Pressure Switch 20 PSI |
| ALL99062 | Warning Light Amber |
| ALL99063 | Warning Light Blue |
| ALL99064 | Warning Light Green |
| ALL99065 | Warning Light Red |
| ALL99144 | Warning Indicator Bulbs, 2-Pack |
| ALL99145 | Replacement Bulb And Socket |

Switch Panels



ALL80140 ALL80150 ALL80141 ALL80142 ALL80146 ALL80160

Designed with the racer in mind, panels feature well marked switches and indicator lights. Units are completely wired for easy installation and include detailed instructions. Choose from panels with standard or weather-proof switches.

- Part No. Description**
- ALL80140.....Panel Without Light
 - ALL80141.....Panel With Flip-Up Cover
 - ALL80142.....Panel With Light
 - ALL80146.....Panel With Two Switches
 - ALL80150.....Magneto Ignition Panel

Panels With Weatherproof Switches

- ALL80160.....Panel Without Light
- ALL80162.....Switch Panel, One Switch, Panel With Light
- ALL80164.....Switch Panel, Two Switch, Panel With Two Lights

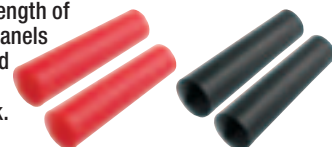
Replacement Components

- ALL99066.....Ignition Indicator Light, Red
- ALL99067.....Switch For Ignition And Accessory
- ALL99068.....Switch Cover
- ALL99069.....Starter Button
- ALL99073.....Weatherproof Switch For Ignition And Accessory
- ALL99146.....Accessory Indicator Light, Green



Toggle Extensions

Toggle extensions increase the length of toggle switches in Allstar switch panels and other switches with a standard type end. Push-on extensions are 1-7/8" long, offered in red or black. Package of two.



- Part No. Color**
- ALL80167.....Red
 - ALL80168.....Black

Temperature Gauge Adapters

Aluminum adapters are a nice upgrade from brass adapters.

- Part No. Description**
- ALL50203.....3/8" NPT
 - ALL50204.....1/2" NPT



LED Bulbs For Gauge Panels

ALL99147 **NEW!**

LED bulbs offer a brighter lighting solution and will hold up much longer than standard bulbs on 16 volt systems.



Jeff Bozell

Photo By: John Berglund



electrical system

Weather Pack Connector Kits

Weather Pack connectors are designed for harsh weather conditions. Originally used by top vehicle manufacturers, the reliability of these connectors has been proven for years and they have become common in many applications requiring a weather-proof connection. Snap lock feature assures positive connection and allows connector to be easily separated as needed. Connectors are rated up to 20A at 12v DC.

- Part No. Description**
 ALL76260.....Weather Pack Starter Kit
 ALL76262.....Weather Pack Master Kit

Individual Connector Kits:

- ALL76265.....1-Wire
 ALL76266.....2-Wire
 ALL76267.....3-Wire
 ALL76268.....4-Wire Flat
 ALL76269.....4-Wire Square
 ALL76270.....6-Wire

Replacement Components

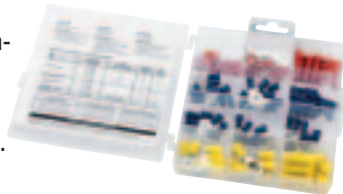
- ALL76272.....Female Terminals 20-18ga, 10-Pack
 ALL76273.....Female Terminals 16-14ga, 10-Pack
 ALL76274.....Female Terminals 12ga, 10-Pack
 ALL76275.....Male Terminals 20-18ga, 10-Pack
 ALL76276.....Male Terminals 16-14ga, 10-Pack
 ALL76277.....Male Terminals 12ga, 10-Pack
 ALL76280.....Seal, Purple 22-20ga, 10-Pack
 ALL76281.....Seal, Green 20-18ga, 10-Pack
 ALL76282.....Seal, Gray 16-14ga, 10-Pack
 ALL76283.....Seal, Blue 12ga, 10-Pack
 ALL76284.....Seal Plug, 10-Pack



A Weather Pack Terminal Tool and Electrical Pliers are offered to aid the wiring and termination process. Please see page 5 for listing.

Wire Terminal Kit ALL76224

A 100-piece terminal kit with a generous supply of the most commonly used connectors for automotive wiring. A sturdy plastic case with divided compartments helps keep connectors organized.



Each Kit Includes:

| 22-16ga. | 16-14ga. | 12-10ga. |
|-----------------------|-------------------------|-------------------------|
| (10) Butt Connectors | (10) Butt Connectors | (10) Butt Connectors |
| (8) Ring Terminals #6 | (10) Ring Terminals #10 | (8) Ring Terminals #10 |
| (8) Ring Terminals #8 | (8) Ring Terminals 1/4" | (7) Ring Terminals 3/8" |
| - | (7) Female Blade | - |
| - | (7) Male Blade | - |
| - | (7) Spade | - |

Universal Wire Connectors

Molded connectors include a male and female end, joined by a loop of 16 gauge primary wire which may be cut to length. Useful for switch and gauge panels or accessories that are disconnected frequently.



- Part No. Description**
 ALL76231.....One Wire With 12" Loop
 ALL76232.....Two Wire With 12" Loop
 ALL76233.....Three Wire With 48" Loop
 ALL76234.....Four Wire With 48" Loop
 ALL76235.....Five Wire With 48" Loop

Circuit Breakers

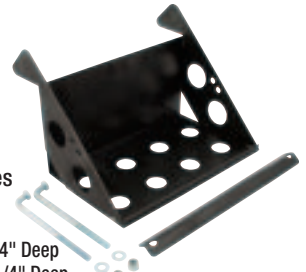
Circuit breakers protect electrical circuits similar to fuses, but cool and reset to maintain power to critical items such as headlights or ignition systems. Use circuit breaker to power accessories in a race car and to keep constant power to ignition. Steel base and mounting bracket provide durability and ease mounting to panels. 10-32 threaded stud terminals include nuts with lock washers.



- Part No. Description**
 ALL76210.....20 Amp
 ALL76212.....30 Amp

Battery Boxes

Universal, lightweight steel battery boxes may be welded or bolted to the frame. Boxes are available in two sizes and include hold down hardware.



- Part No. Description**
 ALL76100.....Full Size, 11-3/4" Wide x 7-1/4" Deep
 ALL76101.....Short Style, 9-1/2" Wide x 7-1/4" Deep

Lightweight Battery Box ALL76102

Designed to be quickly bolted in. Box is 11" wide x 7" deep and includes 3/8" hold down hardware. Zinc plated for corrosion resistance.



Battery Terminal Covers ALL76150

Covers slip over battery cables and cover battery terminals to prevent accidental shorting. Fit most top post mount batteries. Required by many sanctioning racing bodies. Package of two includes one black and one red cover.



Battery Disconnect Boots

Protect the terminals on battery disconnects from being accidentally shorted.

- Part No. Description**
 ALL76152.....Red, Two-Pack
 ALL76153.....Black, Two-Pack



Darrell Lanigan

Photo By: John Berglund



electrical system

Battery Disconnect Switch

Shut down the electrical and charging system with a quick twist of the knob. Switches are available with brightly screen printed aluminum mounting panel, or on/off decal for mounting through body panel.



ALL80158



| Part No. | Description |
|----------|--|
| ALL80156 | Switch And On/Off Decal |
| ALL80157 | Switch For Use With Alternator And On/Off Decal |
| ALL80158 | Switch And Aluminum Mounting Panel |
| ALL80159 | Switch For Use With Alternator And Aluminum Mounting Panel |
| ALL99045 | Replacement On/Off Decal |
| ALL76152 | Battery Disconnect Boots, Red 2-Pack |
| ALL76153 | Battery Disconnect Boots, Black 2-Pack |

Battery Charging Posts ALL76139

Posts mount through a body panel to provide remote access to battery terminals for quick, easy, battery charging. Color coded caps are a safety feature to prevent crossed cables.



| Part No. | Description |
|----------|-----------------|
| ALL76140 | Red Post Only |
| ALL76141 | Black Post Only |

Charging Post Bracket ALL60064

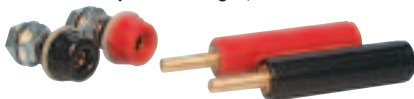
Securely mount Allstar charging posts on vehicles where battery is not easily accessible. Pre-drilled holes allow quick mounting to frame or body. Double-D hole design positions posts close together, but provides enough room for charging or jumper cable clamps. Charging posts sold separately.



Quick Connect Battery Charging Posts

Two-piece, color-coded connectors make safe, out-of-car connection to battery charger quick and easy. Female ends connect to battery cables and pass through a body panel. Male ends of connectors fit on battery charger cables. Shafts are tapered for tight, secure connections.

| Part No. | Description |
|----------|-----------------------------|
| ALL76300 | Red |
| ALL76310 | Black |
| ALL76301 | Red Female Connector Only |
| ALL76311 | Black Female Connector Only |



Ryan VanderVeen

Battery Quick Disconnects

Disconnects provide a connection for battery charging, or for quick battery changes during a race. Prevent accidental reverse polarity. Choose from 50 or 175 amp ratings. Sold in pairs and include cable terminals.



ALL76320

| Part No. | Description |
|----------|---------------------------------|
| ALL76320 | 50 Amp Gray Disconnects, 1-Pair |
| ALL76322 | 175 Amp Red Disconnects, 1-Pair |

Replacement Components

| | |
|----------|--|
| ALL76321 | 6 Gauge Terminals For ALL76320, 1-Pair |
| ALL76323 | 2 Gauge Terminals For ALL76322, 1-Pair |

Gold Battery Terminals

Machined from solid brass stock and 24k gold plated for maximum conductivity. Top mount terminals allow attachment of battery cable power rings while side mount terminals include nut and lock washers for 5/16" studs. Terminals are perfect as upgrades for battery cable kits. Sold in pairs.



ALL76120

ALL76122

| Part No. | Description |
|----------|-------------|
| ALL76120 | Top-Mount |
| ALL76122 | Side-Mount |

Battery Cable Kits

Everything needed to connect a top post style battery to starter. The cable in these kits is fine stranded, rope-lay copper for the best current carrying capabilities.

ALL76110 And ALL76114 Include:

- 15 Ft. Red Positive Cable
- 2 Ft. Black Ground Cable
- 1 Pr. Battery Terminals
- 4 Pr. Crimp Power Rings

ALL76112 Includes:

- 25 Ft. Red Positive Cable
- 8 Ft. Black Ground Cable
- 7 Pr. Crimp Power Rings
- 7 Pr. Shrink Tubing
- 2 Pr. Battery Terminals



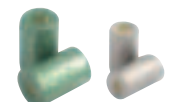
| Part No. | Description |
|----------|---|
| ALL76110 | 2 Gauge Kit (15' Positive Cable), Works With 1 Battery |
| ALL76112 | 2 Gauge Drag Kit (25' Positive Cable), Works With 2 Batteries |
| ALL76114 | 4 Gauge Circle Track Kit (15' Positive Cable), Works With 1 Battery |



Nylon or Aluminum Line Clamps may be used to secure battery cable to vehicle chassis. Please see page 32 for listing.

Solder Slugs

Use solder slugs to secure ring terminal ends to battery cable. Individual pieces are the correct amount of solder to be used for each size of cable. Package of 10.



ALL76131

ALL76132

| Part No. | Description |
|----------|----------------------------|
| ALL76131 | Slug For 2 Gauge Terminals |
| ALL76132 | Slug For 4 Gauge Terminals |

How To Use Solder Slugs:

1. Strip cable so the exposed copper reaches the bottom of the battery terminal.
2. Place the proper size slug in the battery terminal and secure terminal in vice.
3. Heat the base of the battery terminal with the slug inside using a propane torch or similar tool. As the battery terminal is heated, gently press cable into terminal. Allow time for the connection to cool.
4. Protective clothing and eyewear should be worn at all times.



electrical system

Ring Terminals

Use to repair or build custom length battery cables, or when installing a battery disconnect switch. Terminals may be crimped or soldered to wire. Sold in pairs with heat shrink sleeving for a waterproof connection.

| Part No. | Description |
|---------------|---------------------|
| ALL76116..... | 2 Gauge, 5/16" Hole |
| ALL76117..... | 2 Gauge, 3/8" Hole |
| ALL76118..... | 4 Gauge, 5/16" Hole |
| ALL76119..... | 4 Gauge, 3/8" Hole |



A An Impact Crimper, which may be used to crimp ring terminals to battery cables, is listed on page 5.

Firewall Cable Bushing

Mounts securely to the firewall and locks onto the wire for a waterproof and vibration proof seal.

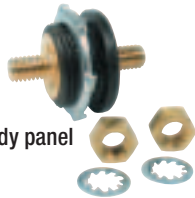
| Part No. | Description |
|---------------|-------------|
| ALL76137..... | 2 Gauge |
| ALL76138..... | 4 Gauge |



Battery Cable Thru Stud

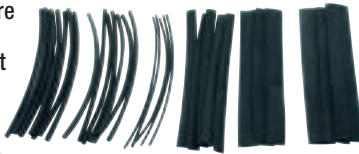
ALL76142

Run battery cable through firewall or any body panel safely. 3/8"-16 thread.



Heat Shrink Tubing **ALL76160**

Place tubing over wiring before attaching terminal end, slide over crimped terminal end, heat to seal and strengthen connection. 30-piece kit includes a variety of sizes including 1/16", 1/8", 3/16", 1/4", 3/8" and 1/2".



Solenoid And Installation Kit

ALL76202

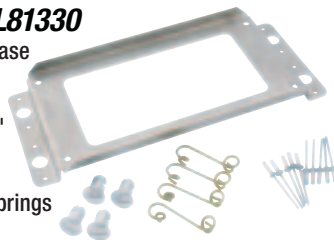
Relocate starter solenoid away from direct engine heat to provide easy access and eliminate hot start problems common on General Motors vehicles. An under hood starter switch can also be added. Includes standard duty, Ford-style solenoid, mounting screws, terminals and wiring kit.

| Part No. | Description |
|---------------|-----------------------|
| ALL76201..... | Installation Kit Only |
| ALL76203..... | Solenoid Only |



MSD Box Mount **ALL81330**

Box mount provides a quick release method for replacing MSD6420, MSD6425, MSD6430 and other ignition boxes with 7-1/2" x 3-1/2" center to center mounting dimensions. Kit includes aluminum box mount, (4) quick turn fasteners, springs and 1/8" aluminum rivets.



Street Performance Mini-Starter

ALL80525

Small block Chevy clockable starter offers twelve mounting positions and is a good choice for crate motors with up to 10.5:1 compression. Starter has 1.4kw permanent magnet and weighs only 7.5 lbs. Clears most kickout oil pans and works with 153-tooth and 168-tooth flywheels or flexplates.



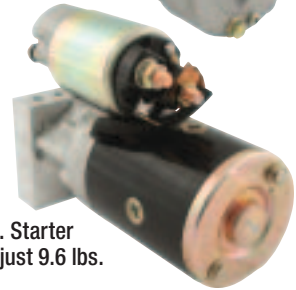
Chevy Mini-Starter

ALL80520

It's smaller, lighter and offers several mounting options. Perfect starter for race cars with clearance problems in the chassis or around header pipes. Chevy 153- and 168-tooth applications. Starter has 1.4kw permanent magnet, weighs just 9.6 lbs. and includes bolts and shims.

Replacement Components

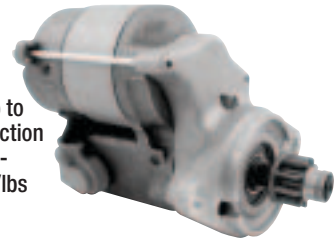
| Part No. | Description |
|---------------|------------------------|
| ALL80521..... | Starter Solenoid |
| ALL80522..... | Starter Drive Assembly |
| ALL80523..... | Starter Pinion |



Bert/Brinn Starter

ALL80530

Bert/Brinn Starter can handle up to 16:1 compression. 4.4:1 gear reduction starter has a 1.4kw motor that produces 1.9 horsepower and 200 ft./lbs of torque.



TECH TIP

Starter Troubles?

If you're experiencing starter troubles, try the following: If the pinion moves in and out, the solenoid is OK. If the pinion does not spin, it's normally the hot feed wire either not having a good contact or not enough voltage from the battery.

GM Single Wire Alternators



ALL80500



ALL80501

Completely remanufactured GM Delco single wire alternators are easily hooked-up. Housings are natural finish aluminum. Choose from 63 or 80 amp capacities.

| Part No. | Description |
|---------------|------------------------------|
| ALL80500..... | 63 Amp, Full Size, 10.3 Lbs. |
| ALL80501..... | 80 Amp, Compact Size, 9 Lbs. |



chemicals, additives and cleaners

Oil Eater



ALL78213

ALL78211

The cleaner/degreaser that really works! Clean shop floors, degrease engine bays or trailer floors. Offered in a 32 oz. spray bottle or 1 gallon container.

| Part No. | Description |
|---------------|---------------------|
| ALL78213..... | 32 Oz. Spray Bottle |
| ALL78211..... | 1 Gallon Container |

Ground Shipment Only

Plexus Cleaner ALL78200

Plexus cleaner is formulated to clean and protect clear and colored plastics. Unlike conventional waxes, Plexus cleans as it polishes and actually seals the pores of plastic, making small scratches less visible. Dries without streaks or smears. Excellent for polycarbonate windows on race cars. 13 oz. can.



Novus Plastic Cleaner And Polish

Novus plastic polish will restore the finish of plastics, including polycarbonate windows and windshields. Offered in three formulas.

Cleaner 1 - ALL78201

Gently cleans all plastics without scratching. Leaves a lustrous shine that resists fogging, repels dust, and eliminates static. 8 oz. spray bottle.



Polish 2 - ALL78202

Removes fine scratches, haziness, and abrasions from most plastics. With repeated use, polish 2 will restore faded and discolored plastics. 8 oz. squeeze bottle.



Polish 3 - ALL78203

Removes heavy scratches and abrasions from most acrylic surfaces. Requires both #1 and #2 polishes for final finishing. 8 oz. squeeze bottle.



Brandon Thirby

Dirt Tire Soap ALL78236 **NEW!**

Clean your tires like the Pro's! Simply mix with water and spray on your tires before washing them and the mud almost falls off. 1 gallon container.



Pre-Race Dirt Solution

ALL78234 **NEW!**

Mix with water and spray on the underside of your car before entering the race track. Helps prevent dirt, oil and rubber from sticking to the frame and body panels. Half gallon container.



Mud-X Concentrate

ALL78230

Mix concentrate with up to ten quarts of water to produce a coating that prevents mud, dirt, oil, rubber and exhaust residue from sticking to body panels. Safe for metal, plastic, rubber, and painted surfaces. One quart container.



Ground Shipment Only

Mud-X Cleaner ALL78232

Cleans and shines plastic, polycarbonate, chrome, fiberglass, paint, vinyl and leather and leaves an invisible coating that protects surfaces and repels dirt, dust, fingerprints, smudges and bugs. Spray it on and wipe it off. Excellent anti-fog coating for helmet shields. 14 oz. can.



Fogging Oil ALL78220

Spray aerosol lubricant (with special additives) into the intake and spark plug holes to coat and lubricate the cylinders, valves and valve seats. Prevents horsepower-robbing corrosion and eliminates scuffing at start-up after periods of storage. May be used in all 2- or 4-cycle, carbureted or fuel injected gasoline engines in cars, trucks, motorhomes, ATV's, etc. Sold in 12 oz. can.



Ground Shipment Only

Fuel Fragrances

Fuel fragrances can be added to most types of fuels including methanol, nitromethane, gasoline and also may be used in 2-cycle mixtures. Available in many scents in a resealable 4 oz. bottle - enough to treat 30-55 gallons of alcohol or 20 gallons of gasoline. Mixes clear with fuel.

| Part No. | Description |
|---------------|--------------|
| ALL78124..... | Cherry |
| ALL78126..... | Grape |
| ALL78127..... | Banana |
| ALL78128..... | Fruit Punch |
| ALL78129..... | Pina Colada |
| ALL78130..... | Root Beer |
| ALL78131..... | Bubble Gum |
| ALL78132..... | Cotton Candy |
| ALL78133..... | Raspberry |
| ALL78134..... | Tangerine |



Ground Shipment Only



chemicals, additives and cleaners

Upper Lube

Upper Lube is a high temperature cylinder lube that protects and extends engine life. Added directly to the fuel, Upper Lube reduces fuel wash down, chalky residue and corrosion, while lubricating cylinders, valves, guides, and fuel system components. It mixes completely, won't separate from fuel, leaves no varnish residue and does not contain a flame agent. One 16 oz. bottle treats 55 gallons of alcohol, 150 gallons of gasoline, or 110 gallons of ethanol.



| Part No. | Description |
|---------------|----------------------------------|
| ALL78100..... | Upper Lube |
| ALL78120..... | Upper Lube With Cherry Fragrance |
| ALL78122..... | Upper Lube With Grape Fragrance |

Motul 600 Brake Fluid ALL78117 **NEW!**

100% synthetic brake fluid has an extremely high boiling point helping to prevent vapor lock and brake fade during hard use. Motul 600 exceeds DOT 3 and DOT 4 specifications. Dry boiling point 594° F, wet boiling point 421° F. Sold in 16.9 oz. bottle.



Motul 660 Brake Fluid ALL78118 **NEW!**

100% synthetic brake fluid is specifically designed to resist extreme temperatures generated by racing carbon and ceramic brakes. Motul 660 exceeds DOT 3, DOT 4 and DOT 5.1 specifications. Dry boiling point 617° F, wet boiling point 401° F. Sold in 16.9 oz. bottle.



AP PRF Brake Fluid ALL78116

Developed for extreme, high temperature racing conditions with a typical dry boiling point of 608°F. and a wet boiling point of 390°F. Conforms to DOT 4 specifications. Sold in 16.9 oz. bottle.



AP 600 Hi-Temp Racing Brake Fluid ALL78108

Designed for extreme, high temperature racing conditions with a dry boiling point of 572°F. and a wet boiling point of 410°F. Conforms to DOT 4 specifications. Sold in 16.9 oz. bottle.



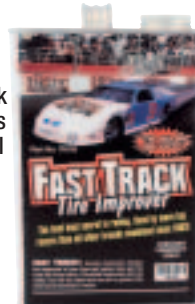
Castrol SRF Brake Fluid ALL78115

Castrol SRF brake fluid has a wet boiling point of 518°F (270°C) which exceeds DOT 3 and 4 standards. Do not mix this product with other brake fluids, as this will reduce the benefits of Castrol SRF. 1 liter bottle (33.8 oz.)



Fast Track ALL78103

Chemically treats and softens race tires to increase traction. Great for qualifying, Fast Track works on asphalt and dirt tires. One gallon treats four tires. Best on Hoosiers, very detectable, will make tires very soft. One gallon container.



Hot Lap Tire Softener

Increase tire life by 20% over other softeners and reduce lap times by 2-3 tenths. Hot Lap relies on a special formula and will provide instant results. Formulated to pass tire "sniffer" tests.

| Part No. | Description |
|---------------|--|
| ALL78101..... | One Gallon Hot Lap, Quick For 200 Laps |
| ALL78107..... | One Pint Hot Lap |



CTS Tire Softener ALL78104

Chemically treats and softens race tires to increase traction. Sniffer-proof treatment makes old tires soft again. One gallon container.



Competitive Edge Tire Conditioner ALL78105

Chemically treats and softens race tires to increase traction without making tires greasy. Apply race day or night before on new or old tires. Can be used on the inside or outside. One gallon container treats 4 to 6 tires.



Track Claw Tire Strengthenener

Strengthens the rubber and will work on all tires. Undetectable. Reduces lap times 2-3 tenths. One gallon container.

| Part No. | Description |
|---------------|------------------------|
| ALL78110..... | 180°-220°F Tire Temps |
| ALL78111..... | Up To 150°F Tire Temps |



ALL ITEMS ON THIS PAGE GROUND SHIPMENT ONLY.



2-1/2" Coil-Over Kits

Made of aluminum, these kits have slotted tops and are available for Carrera/QA1, Koni, Pro-Shock, Bilstein and others.



| Part No. | Description |
|------------|-----------------------------------|
| AAA12400 | Carrera/QA1 5" Coil-Over Kit |
| AAA12405 | Carrera 7" Coil-Over Kit |
| AAA12405-5 | Carrera/QA1 IMCA 5" Coil-Over Kit |
| AAA12413 | QA1 7" Coil-Over Kit |
| AAA12420 | Pro Shock 5" Coil-Over Kit |
| AAA12425 | Pro Shock 7" Coil-Over Kit |
| AAA12432 | Koni 5" 30 Series Coil-Over Kit |
| AAA12433 | Koni 7" 30 Series Coil-Over Kit |
| AAA12435 | Bilstein 5" Series Coil-Over Kit |
| AAA12436 | Bilstein 7" Coil-Over Kit |
| AAA12441 | Monroe/AFCO 7" Coil-Over Kit |

Replacement Components

| | |
|-----------|---|
| AAA12450 | 5" Aluminum Sleeve, Carrera/QA1, Pro |
| AAA12455 | 7" Aluminum Sleeve, Carrera/QA1, Pro |
| AAA12460 | Aluminum Adjusting Nut |
| AAA12465 | Slotted Coil Top, Carrera/QA1, Bilstein |
| AAA12466* | IMCA Coil Nut, 5" |
| AAA12469* | IMCA Adapter Ring, 5" |
| AAA12490 | Hair Pin Clip |
| AAA12495 | Snap Ring |

*IMCA coil nut and adapter ring are compatible with all A-1 Racing Products 2-1/2" coil-over components.

Suspension Tubes

Gold anodized aluminum tubes are threaded RH on one end and LH on the other, with a wrench flat on one end.

12000 Series: 7/8" Dia. x .156" wall, Tapped 5/8" RH And LH

| Part No. | Length |
|--------------|--------|
| AAA12000-5.5 | 5.5" |
| AAA12000-8 | 8" |
| AAA12000-9 | 9" |
| AAA12000-10 | 10" |
| AAA12000-11 | 11" |
| AAA12000-12 | 12" |
| AAA12000-13 | 13" |
| AAA12000-14 | 14" |
| AAA12000-15 | 15" |
| AAA12000-16 | 16" |
| AAA12000-17 | 17" |
| AAA12000-18 | 18" |



Unthreaded 6' Lengths To Make Your Own Tubes

| Part No. | Description |
|-------------|--|
| AAA12050-72 | 1" Diameter With .225" Wall For 5/8" Heims |

Rod End Bushings

Bushings reduce the diameter of the mounting hole for rod end bolt. Sold individually.

| Part No. | Size |
|----------|--------------|
| AAA10460 | 1/2" to 3/8" |
| AAA10465 | 5/8" to 1/2" |
| AAA10470 | 3/4" to 1/2" |
| AAA10475 | 3/4" to 5/8" |



Reducer Bushing Assortment AAA10480

Assorted Sizes -10 pieces

Torsion Bushing AAA12540

High impact plastic bushing fits front or rear torsion bar tubes on sprint car chassis and fits 1-1/2" O.D. x .095" wall tubing with a 1-1/8" I.D. Sold individually.



Aluminum Wheel Adapters

Adapter allows use of Wide 5 or modified type wheels with the smaller bolt circle hubs and rear ends. Available for the following hub bolt circles:

| Part No. | Description |
|----------|--------------------|
| AAA12800 | 4-1/2" Bolt Circle |
| AAA12805 | 4-3/4" Bolt Circle |
| AAA12810 | 5" Bolt Circle |
| AAA12815 | 5-1/2" Bolt Circle |



Bearing Style Birdcages

Steel, IMCA-legal birdcages fit many swing arm and four-link suspensions and eliminate binding and wear on axle tubes. Available in standard, big bearing, or light-weight, small bearing versions. Small bearing birdcage will clear IMCA 5" spring coil-over kits. Weekly greasing is not necessary. Sold individually.



| Description | Big Bearing Part No. | Small Bearing Part No. |
|---------------------------|----------------------|------------------------|
| Swing Arm/Z-Link Birdcage | AAA13001 | - |
| Four-Link Birdcage | AAA13007 | AAA13004 |



Randy Chronister



Steve Trendell

200 Series Swivel Hose Ends

Reusable aluminum hose swivel design offers 360° of adjustment and the single nipple provides superior sealing. "Smooth bend" technology promotes exceptional flow and performance.

| Hose Size | Straight | 30° | 45° | 60° | 90° | 120° | 150° | 180° |
|-----------|----------|----------|----------|----------|----------|----------|----------|----------|
| -4 | AAA00004 | — | AAA04504 | — | AAA09004 | — | — | — |
| -6 | AAA00006 | AAA03006 | AAA04506 | AAA06006 | AAA09006 | AAA01206 | AAA01506 | AAA01806 |
| -8 | AAA00008 | AAA03008 | AAA04508 | AAA06008 | AAA09008 | AAA01208 | AAA01508 | AAA01808 |
| -10 | AAA00010 | AAA03010 | AAA04510 | AAA06010 | AAA09010 | AAA01210 | AAA01510 | AAA01810 |
| -12 | AAA00012 | AAA03012 | AAA04512 | AAA06012 | AAA09012 | AAA01212 | AAA01512 | AAA01812 |
| -16 | AAA00016 | AAA03016 | AAA04516 | AAA06016 | AAA09016 | AAA01216 | AAA01516 | AAA01816 |



AN To NPT Adapters

| Part No. | AN Size | NPT Size | Part No. | AN Size | NPT Size |
|-----------------|---------|----------|----------|---------|----------|
| Straight | | | | | |
| AAA81603 | -3 | 1/8" | AAA81688 | -8 | 1/2" |
| AAA81604 | -4 | 1/8" | AAA81611 | -10 | 3/8" |
| AAA81644 | -4 | 1/4" | AAA81610 | -10 | 1/2" |
| AAA81662 | -6 | 1/8" | AAA81609 | -10 | 3/4" |
| AAA81606 | -6 | 1/4" | AAA81613 | -12 | 1/2" |
| AAA81666 | -6 | 3/8" | AAA81612 | -12 | 3/4" |
| AAA81668 | -6 | 1/2" | AAA81614 | -12 | 1" |
| AAA81607 | -8 | 1/4" | AAA81615 | -16 | 3/4" |
| AAA81608 | -8 | 3/8" | | | |



| Part No. | AN Size | NPT Size | Part No. | AN Size | NPT Size |
|------------|---------|----------|----------|---------|----------|
| 45° | | | | | |
| AAA82303 | -3 | 1/8" | AAA82309 | -8 | 1/2" |
| AAA82304 | -4 | 1/8" | AAA82311 | -10 | 3/8" |
| AAA82344 | -4 | 1/4" | AAA82310 | -10 | 1/2" |
| AAA82306 | -6 | 1/4" | AAA82313 | -10 | 3/4" |
| AAA82366 | -6 | 3/8" | AAA82312 | -12 | 3/4" |
| AAA82368 | -6 | 1/2" | AAA82315 | -16 | 3/4" |
| AAA82307 | -8 | 1/4" | AAA82316 | -16 | 1" |
| AAA82308 | -8 | 3/8" | | | |



| Part No. | AN Size | NPT Size | Part No. | AN Size | NPT Size |
|------------|---------|----------|-------------|---------|----------|
| 90° | | | | | |
| AAA82203 | -3 | 1/8" | AAA82208-12 | -8 | 3/4" |
| AAA82204 | -4 | 1/8" | AAA82288 | -8 | 1/2" |
| AAA82244 | -4 | 1/4" | AAA82209 | -10 | 3/8" |
| AAA82262 | -6 | 1/8" | AAA82210 | -10 | 1/2" |
| AAA82206 | -6 | 1/4" | AAA82211 | -10 | 3/4" |
| AAA82266 | -6 | 3/8" | AAA82213 | -12 | 1/2" |
| AAA82268 | -6 | 1/2" | AAA82212 | -12 | 3/4" |
| AAA82207 | -8 | 1/4" | AAA82215 | -16 | 3/4" |
| AAA82208 | -8 | 3/8" | AAA82216 | -16 | 1" |



AN Union

| Part No. | AN Size |
|----------|---------|
| AAA81503 | -3 |
| AAA81504 | -4 |
| AAA81506 | -6 |
| AAA81508 | -8 |
| AAA81510 | -10 |
| AAA81512 | -12 |
| AAA81516 | -16 |



AN 90° Union

| Part No. | AN Size |
|----------|---------|
| AAA82103 | -3 |
| AAA82104 | -4 |
| AAA82106 | -6 |
| AAA82108 | -8 |
| AAA82110 | -10 |
| AAA82112 | -12 |
| AAA82116 | -16 |



AN Tee

| Part No. | AN Size |
|----------|---------|
| AAA82403 | -3 |
| AAA82404 | -4 |
| AAA82406 | -6 |
| AAA82408 | -8 |
| AAA82410 | -10 |
| AAA82412 | -12 |
| AAA82416 | -16 |



Tee Adapter With NPT On Run

| Part No. | AN Size | NPT Size |
|----------|---------|----------|
| AAA82603 | -3 | 1/8" |
| AAA82604 | -4 | 1/8" |
| AAA82606 | -6 | 1/4" |
| AAA82608 | -8 | 3/8" |



Tee Adapter With NPT On Leg

| Part No. | AN Size | NPT Size |
|----------|---------|----------|
| AAA82503 | -3 | 1/8" |
| AAA82504 | -4 | 1/8" |
| AAA82506 | -6 | 1/4" |
| AAA82507 | -6 | 3/8" |
| AAA82508 | -8 | 3/8" |
| AAA82510 | -10 | 1/2" |
| AAA82512 | -12 | 3/4" |



AN Union Reducer

| Part No. | AN Size | AN Size |
|----------|---------|---------|
| AAA91902 | -4 | -3 |
| AAA91906 | -6 | -4 |
| AAA91912 | -8 | -6 |
| AAA91914 | -10 | -6 |
| AAA91915 | -10 | -8 |
| AAA91920 | -12 | -10 |
| AAA91923 | -16 | -12 |



Flare Seat Reducer

| Part No. | Female Size | Male Size |
|------------|-------------|-----------|
| AAA9500403 | -4 | -3 |
| AAA9500604 | -6 | -4 |
| AAA9500806 | -8 | -6 |
| AAA9501008 | -10 | -8 |
| AAA9501208 | -12 | -8 |
| AAA9501210 | -12 | -10 |
| AAA9501612 | -16 | -12 |



Female Swivel Coupler



| Part No. | AN Size |
|----------|---------|
| AAACPL03 | -3 |
| AAACPL04 | -4 |
| AAACPL06 | -6 |
| AAACPL08 | -8 |
| AAACPL10 | -10 |
| AAACPL12 | -12 |
| AAACPL16 | -16 |

Female To Male Swivel Coupler



| Part No. | AN Size | Part No. | AN Size |
|-------------|---------|-----------|---------|
| 45° | | | |
| AAACPL82303 | -3 | AAACPL903 | -3 |
| AAACPL82304 | -4 | AAACPL904 | -4 |
| AAACPL82306 | -6 | AAACPL906 | -6 |
| AAACPL82308 | -8 | AAACPL908 | -8 |
| AAACPL82310 | -10 | AAACPL910 | -10 |
| AAACPL82312 | -12 | AAACPL912 | -12 |
| AAACPL82316 | -16 | AAACPL916 | -16 |
| 90° | | | |

Tee Coupler With Swivel On Run



| Part No. | AN Size |
|-------------|---------|
| AAACPL82603 | -3 |
| AAACPL82604 | -4 |
| AAACPL82606 | -6 |
| AAACPL82608 | -8 |
| AAACPL82610 | -10 |
| AAACPL82612 | -12 |
| AAACPL82616 | -16 |

Tee Coupler With Swivel On Leg



| Part No. | AN Size |
|-------------|---------|
| AAACPL82403 | -3 |
| AAACPL82404 | -4 |
| AAACPL82406 | -6 |
| AAACPL82408 | -8 |
| AAACPL82410 | -10 |
| AAACPL82412 | -12 |
| AAACPL82416 | -16 |

AN Adapters

Female Tee

| Part No. | AN Size |
|----------|---------|
| AAA93803 | -3 |
| AAA93804 | -4 |
| AAA93806 | -6 |
| AAA93808 | -8 |
| AAA93810 | -10 |
| AAA93812 | -12 |
| AAA93816 | -16 |



Straight Bulkhead

| Part No. | AN Size |
|----------|---------|
| AAA83203 | -3 |
| AAA83204 | -4 |
| AAA83206 | -6 |
| AAA83208 | -8 |
| AAA83210 | -10 |
| AAA83212 | -12 |
| AAA83216 | -16 |



45° Bulkhead

| Part No. | AN Size |
|----------|---------|
| AAA83703 | -3 |
| AAA83704 | -4 |
| AAA83706 | -6 |
| AAA83708 | -8 |
| AAA83710 | -10 |
| AAA83712 | -12 |
| AAA83716 | -16 |



90° Bulkhead

| Part No. | AN Size |
|----------|---------|
| AAA83303 | -3 |
| AAA83304 | -4 |
| AAA83306 | -6 |
| AAA83308 | -8 |
| AAA83310 | -10 |
| AAA83312 | -12 |
| AAA83316 | -16 |



Straight Bulkhead Reducer

| Part No. | Long Side | Short Side |
|----------|-----------|------------|
| AAA83213 | -12 | -16 |
| AAA83217 | -16 | -12 |



Bulkhead Tee On Run

| Part No. | AN Size |
|----------|---------|
| AAA80403 | -3 |
| AAA80404 | -4 |
| AAA80406 | -6 |
| AAA80408 | -8 |
| AAA80410 | -10 |
| AAA80412 | -12 |
| AAA80416 | -16 |



Bulkhead Tee On Leg

| Part No. | AN Size |
|----------|---------|
| AAA83403 | -3 |
| AAA83404 | -4 |
| AAA83406 | -6 |
| AAA83408 | -8 |
| AAA83410 | -10 |
| AAA83412 | -12 |
| AAA83416 | -16 |



Bulkhead Nut

| Part No. | AN Size |
|----------|---------|
| AAA92403 | -3 |
| AAA92404 | -4 |
| AAA92406 | -6 |
| AAA92408 | -8 |
| AAA92410 | -10 |
| AAA92412 | -12 |
| AAA92416 | -16 |



Nylon Washers

| Part No. | AN Size | Qty. |
|-----------|---------|------|
| AAA250406 | -6 | 2 |
| AAA250408 | -8 | 2 |
| AAA250410 | -10 | 2 |
| AAA250412 | -12 | 1 |



AN Caps

| Part No. | AN Size |
|----------|---------|
| AAA92903 | -3 |
| AAA92904 | -4 |
| AAA92906 | -6 |
| AAA92908 | -8 |
| AAA92910 | -10 |
| AAA92912 | -12 |
| AAA92916 | -16 |



AN Port Plugs

| Part No. | AN Size |
|----------|---------|
| AAA81403 | -3 |
| AAA81404 | -4 |
| AAA81406 | -6 |
| AAA81408 | -8 |
| AAA81410 | -10 |
| AAA81412 | -12 |
| AAA81416 | -16 |



Hard Line Adapters

| Part No. | AN Size |
|----------|---------|
| AAA81803 | -3 |
| AAA81804 | -4 |
| AAA81806 | -6 |
| AAA81808 | -8 |
| AAA81810 | -10 |
| AAA81812 | -12 |



Tube Sleeve

| Part No. | AN Size |
|----------|---------|
| AAA81903 | -3 |
| AAA81904 | -4 |
| AAA81906 | -6 |
| AAA81908 | -8 |
| AAA81910 | -10 |
| AAA81912 | -12 |



Buna "N" O-Rings

| Part No. | AN Size | Qty. |
|-----------|---------|------|
| AAA211403 | -3 | 5 |
| AAA211404 | -4 | 5 |
| AAA211406 | -6 | 5 |
| AAA211408 | -8 | 5 |
| AAA211410 | -10 | 5 |
| AAA211412 | -12 | 5 |
| AAA211416 | -16 | 5 |



Fyre Jacket

| Part No. | I.D. | Fits Hose | Length |
|-----------|---------|-----------|--------|
| AAA290375 | 3/8" | -3/-4 | 36" |
| AAA290625 | 5/8" | -6 | 36" |
| AAA290750 | 3/4" | -8 | 36" |
| AAA290875 | 7/8" | -10 | 36" |
| AAA291100 | 1" | -12 | 36" |
| AAA291187 | 1-3/16" | -16 | 36" |

NPT Adapters

Female Coupler

| Part No. | NPT Size |
|----------|----------|
| AAA91001 | 1/8" |
| AAA91002 | 1/4" |
| AAA91003 | 3/8" |
| AAA91004 | 1/2" |
| AAA91006 | 3/4" |
| AAA91008 | 1" |
| AAA91010 | 1-1/4" |



Female Tee

| Part No. | NPT Size |
|----------|----------|
| AAA91701 | 1/8" |
| AAA91702 | 1/4" |
| AAA91703 | 3/8" |
| AAA91704 | 1/2" |
| AAA91706 | 3/4" |
| AAA91708 | 1" |



Reducer

| Part No. | Male NPT Size | Female NPT Size |
|----------|---------------|-----------------|
| AAA91201 | 1/4" | 1/8" |
| AAA91202 | 3/8" | 1/4" |
| AAA91203 | 3/8" | 1/8" |
| AAA91204 | 1/2" | 3/8" |
| AAA91205 | 1/2" | 1/4" |
| AAA91206 | 1/2" | 1/8" |
| AAA91207 | 3/4" | 1/2" |



Male Coupler

| Part No. | NPT Size |
|----------|----------|
| AAA91101 | 1/8" |
| AAA91102 | 1/4" |
| AAA91103 | 3/8" |
| AAA91104 | 1/2" |
| AAA91106 | 3/4" |



Plug

| Part No. | NPT Size |
|----------|----------|
| AAA93202 | 1/8" |
| AAA93203 | 1/4" |
| AAA93204 | 3/8" |
| AAA93205 | 1/2" |
| AAA93206 | 3/4" |
| AAA93207 | 1" |



Brake Adapters

Banjo Bolts

| Part No. | Thread | Length |
|-----------|-------------|--------|
| AAA77503 | 3/8"-24 | .709" |
| AAA77504 | 7/16"-20 | .709" |
| AAA992031 | 10 x 1.0mm | 18mm |
| AAA992032 | 10 x 1.25mm | 18mm |
| AAA992033 | 10 x 1.5mm | 18mm |



Brake Adapters - Cont. Banjo To AN Male

| Part No. | AN Size | Hole |
|----------|---------|-----------|
| AAA77610 | -3AN | 7/16" |
| AAA77611 | -3AN | 3/8"/10mm |
| AAA77604 | -4AN | 7/16" |
| AAA77605 | -4AN | 3/8"/10mm |



AN Male To Male Crush Washer Seat

| Part No. | AN Size | Thread | Style |
|------------|---------|------------|-------|
| AAA1050026 | -3AN | 10 x 1.5mm | C.W. |
| AAA1050030 | -4AN | 3/8"-24 | C.W. |
| AAA1050032 | -4AN | 7/16"-20 | C.W. |
| AAA1050036 | -4AN | 10 x 1.5mm | C.W. |



AN Male To Male Inverted Flare

| Part No. | AN Size | Thread | Style |
|------------|---------|----------|-------|
| AAA1032403 | -3AN | 3/8"-24 | I.F. |
| AAA1032404 | -4AN | 3/8"-24 | I.F. |
| AAA1071603 | -3AN | 7/16"-24 | I.F. |
| AAA1071604 | -4AN | 7/16"-24 | I.F. |
| AAA1072003 | -3AN | 7/16"-20 | I.F. |



AN Male To Female Inverted Flare

| Part No. | AN Size | Thread | Style |
|-------------|---------|-------------|-------|
| AAAFM101003 | -3AN | 10 x 1.0mm | I.F. |
| AAAFM101004 | -4AN | 10 x 1.0mm | I.F. |
| AAAFM101253 | -3AN | 10 x 1.25mm | I.F. |
| AAAFM103243 | -3AN | 3/8"-24 | I.F. |
| AAAFM103244 | -4AN | 3/8"-24 | I.F. |
| AAAFM107163 | -3AN | 7/16"-24 | I.F. |
| AAAFM107164 | -4AN | 7/16"-24 | I.F. |



Miscellaneous Brake Adapters

| Part No. | Description |
|------------|---|
| AAA77510 | Banjo Washer, 7/16", 2 Pcs. |
| AAA9210 | Banjo Washer, 3/8"/10mm, 2 Pcs. |
| AAA9105A | Brake Line Tee Adapter, -3AN x 3/8"-24, 7/16" Locator |
| AAAST81503 | Steel Union, -3AN |
| AAAST81504 | Steel Union, -4AN |
| AAAST81603 | Straight AN To NPT Steel Adapter, -3AN x 1/8" NPT |
| AAAST81604 | Straight AN To NPT Steel Adapter, -4AN x 1/8" NPT |
| AAAST81803 | Steel Tube Nut, -3AN |
| AAAST81804 | Steel Tube Nut, -4AN |
| AAAST81903 | Steel Tube Sleeve, -3AN |
| AAAST81904 | Steel Tube Sleeve, -4AN |
| AAAST82203 | 90° AN To NPT Steel Adapter, -3AN x 1/8" NPT |
| AAAST82204 | 90° AN To NPT Steel Adapter, -4AN x 1/8" NPT |
| AAAST82303 | 45° AN To NPT Steel Adapter, -3AN x 1/8" NPT |
| AAAST82304 | 45° AN To NPT Steel Adapter, -4AN x 1/8" NPT |
| AAAST83203 | Steel Bulkhead Union, -3AN |
| AAAST83403 | Steel Bulkhead Tee On Leg, -3AN |





Race Series Engine Bearings

Race Series, 3/4 groove main bearings improve connecting rod oiling and load capacity. Bearings lack flash plating and have larger chamfers for large crank fillets. Rod bearings have hardened steel backings for improved crush under high load and improved overlays for increased strength. A "D" suffix indicates dowel pin holes; "X" indicates .001" added clearance. "A" aluminum silicon and stock replacement "P" series bearings are also available. Specify size (Standard, .001", .010", .020", etc.).



| Engine | H Series | HD Series | HX Series | HXD Series | A Series | P Series |
|---|------------|-------------|-------------|--------------|-----------|------------|
| Chevy | | | | | | |
| 1967-02 Small Block 262, 265, 267, 302, 305, 307, 327, 350 Large Journal | | | | | | |
| Rod Bearings | AEB8B663H | AEB8B663HD | AEB8B663HX | AEB8B663HDX | AEB8B663A | - |
| Rod Bearings, 1.889" Honda | AEB1B1663H | - | AEB1B1663HX | - | - | - |
| Rod Bearings, 1.889"/.896" Wide | - | AEB8B1665HD | - | AEB8B1665HDX | - | - |
| Main Bearings | AEB5M909H | - | AEB5M909HX | - | AEB5M909A | - |
| 1955-67 Small Block 265, 283, 302, 327 Small Journal | | | | | | |
| Rod Bearings | AEB8B745H | AEB8B745HD | AEB8B745HX | AEB8B745HDX | - | - |
| Main Bearings | AEB5M429H | - | AEB5M429HX | - | - | - |
| 1970-80 Small Block 400 | | | | | | |
| Rod Bearings | AEB8B663H | AEB8B663HD | AEB8B663HX | AEB8B663HDX | AEB8B663A | - |
| Main Bearings | AEB5M1038H | - | AEB5M1038HX | - | - | AEB5M1038P |
| Ford | | | | | | |
| 1962-01 Small Block 221, 255, 260, 289, 302 | | | | | | |
| Rod Bearings | AEB8B634H | AEB8B634HD | AEB8B634HX | AEB8B634HDX | AEB8B634A | - |
| Main Bearings | AEB5M590H | - | AEB5M590HX | - | AEB5M590A | - |
| 1969-98 Small Block 351W | | | | | | |
| Rod Bearings | - | - | - | - | - | - |
| Main Bearings, 1977-98 | AEB5M1432H | - | AEB5M1432HX | - | - | - |

Note: All rod bearings are sold in sets of 8.

Camshaft Bearings

Part No. Description

Chevy

AEB5C3349C-STD.... 1964-02 Small Block
AEB5C3346C-STD.... Small Block Bow Tie, 1.999"-2.001" Housing Bores

Ford

AEB5C510S-STD..... 1962-01 Small Block 221-351W
AEB5C1321S-STD.... 1962-01 Small Block 221-351W, Heavy Duty Al/Tin
AEB5C1763S-STD.... Small Block SVO 302-351W, 2.204"-2.205" Housing Bores



Eric Pember/Dale White



HO-Series Carburetors **NEW!**

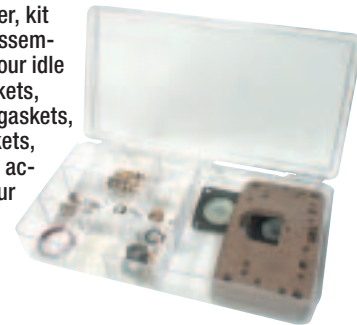
Professionally prepared, "off the shelf" carburetors at affordable prices. The HO-Series carbs offer clean idle, crisp throttle response and exceptional acceleration throughout the RPM range. Designed for single four barrel, normally aspirated engines, carburetors are offered in Model 4150 double pumper 650, 750 and 850 CFM versions. All new, fully CNC-machined castings have milled choke towers, high flow metering blocks and boosters, balanced and calibrated fuel circuits, four corner idle and special non-stick gaskets. All carburetors are run, adjusted and tuned on a test engine prior to shipping.



| Part No. | Description |
|------------------|---------------------------------------|
| AED650HO | 650 HO Carburetor |
| AED750HO | 750 HO Carburetor |
| AED750HP-HO..... | 750 HO Carburetor, HP Series/No Choke |
| AED850HO | 850 HO Carburetor |

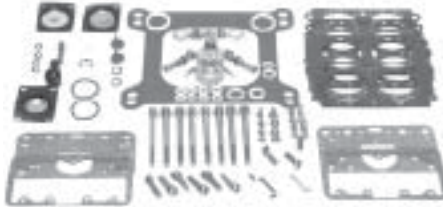
Carburetor Track Kit **AED6052**

Made for the at-the-track tuner, kit includes two needle and seat assemblies, 18 bowl screw gaskets, four idle screw mixture screws and gaskets, four fuel inlet and power valve gaskets, accelerator pump squirter gaskets, two sight plugs, 30cc and 50cc accelerator pump diaphragms, four fuel bowl and metering block gaskets, and many miscellaneous small parts



Carburetor Kits

AED Carburetor Kits, available in two versions, are ideal for rebuilding Holley 2300, 4150 and 4160 series carburetors. Ultimate Performance Kits include all float bowl, metering block and miscellaneous gaskets, accelerator pump diaphragms, needle and seat assemblies and small parts necessary to rebuild carburetor. Pro-Series Kits contain all Ultimate Performance Kit parts along with new bowl and carb screws as well as other small components to make carburetor run and look like new.



| Application | Ultimate Performance Kit | Pro-Series Kit |
|---|--------------------------|----------------|
| Holley 350-500 CFM 2BBL | AED2300 | AED23001 |
| Holley 390-950 CFM 4BBL, Double Pumper | AED4150 | AED41501 |
| Holley 390-950 CFM 4BBL, Double Pumper/Alcohol | AED4150A | - |
| Holley 600-950 CFM 4BBL, Vacuum Secondary | AED4160 | AED41601 |
| Holley 650-800 CFM 4BBL, Spread Bore/Double Pumper | AED4165 | - |
| Holley 650-800 CFM 4BBL, Spread Bore/Vacuum Secondary | AED4175 | - |

Bowl And Metering Block Gaskets

Replacement Holley gaskets are available in standard and blue reusable non-stick designs. Non-stick gaskets ease jet changes. Standard gaskets are sold in packs of ten and non-stick gaskets are sold in packs of five.



AED5840

Part No. Description
 AED5829Standard Metering Block Gaskets (Holley 108-29), 10 pk.
 AED5833Standard Fuel Bowl Gaskets (Holley 108-33), 10 pk.
 AED5840Reusable Metering Block Gaskets (Holley 108-29), 5 pk.
 AED5847Reusable Fuel Bowl Gaskets (Holley 108-33), 5 pk.

Needle And Seat Assemblies

Viton tipped assemblies, in .110" and .125" sizes, are designed for gasoline; high flow, .150" stainless steel assembly is engineered for alcohol use.



Part No. Description
 AED51100.110" Viton Needle And Seat Assemblies, Gasoline, Pair
 AED51150.125" Viton Needle And Seat Assemblies, Gasoline, Each
 AED51170.150" Stainless Steel Needle And Seat Assemblies, Alcohol, Each
 AED5123Reusable Needle And Seat Gaskets, Four Pair

Reusable Bowl Screw Washers AED5410

Reusable white nylon washers will not absorb fuel or separate. 18 per package.



See Through Bowl Sight Plugs AED5170

Clear acrylic plugs ease float level adjustments. Sold in pairs.



Power Valves

High quality power valves, available for Holley carburetors, are high flow and available in several vacuum ratings. Power valves for use with alcohol are also available.

| Vacuum Rating | Gas Part No. | Alcohol Part No. |
|---------------|--------------|------------------|
| 2.5" | AED5025 | AED5025A |
| 3.5" | AED5035 | - |
| 4.5" | AED5045 | - |
| 5.5" | AED5055 | - |
| 6.5" | AED5065 | AED5065A |
| 8.5" | AED5085 | - |



AED5025

Power Valve Block-Off Plug AED5086

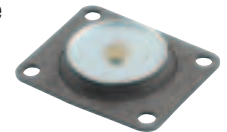
Plug blocks circuit on carburetors not using a power valve. An increase of 6 to 8 jet sizes is recommended to compensate for the loss of enrichment.



Accelerator Pump Diaphragms

High quality replacement diaphragms are engineered for long, leakproof life.

Part No. Description
 AED533530cc Diaphragm
 AED533750cc Diaphragm



Accelerator Pump Squirters

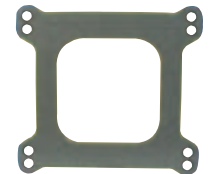
Standard and tube style discharge nozzles are necessary when tuning for top end fuel enrichment. Sold in pairs.

| Size | Standard Part No. | Tube Type Part No. |
|-------|-------------------|--------------------|
| .031" | AED5431 | AED5531 |
| .035" | AED5435 | AED5535 |
| .037" | AED5437 | AED5537 |
| .042" | AED5442 | AED5542 |



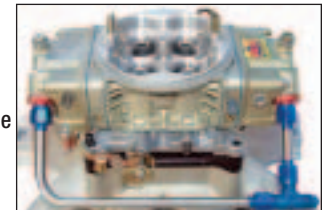
Base Gaskets AED5850

Thick, high quality gaskets fit all standard base 4-bbl. carbs. 10 per package.



Dual Feed Polished Stainless Line Kit AED60945

Machined, -6AN stainless steel line has AN bowl fittings and couplers, and a 1/8" NPT port for a fuel pressure gauge (gauge not included).



Fuel Pressure Gauges

Compact, 1-1/2" diameter gauges are ideal for mounting in-line or on pressure regulators. Chrome plated, shock resistant, stainless steel gauges have 1/8" NPT male fittings.

Part No. Description
 AED6100Fuel Pressure Gauge, 0-15 PSI
 AED6101Liquid-Filled Fuel Pressure Gauge, 0-15 PSI
 AED6102Fuel Pressure Gauge, 0-30 PSI





Silver 62 Series Gas Shock Absorbers

Double adjustable, aluminum big-bodied shocks incorporate the latest technology including new SMART valving. Available for a variety of dirt or pavement late models, shocks have DUROx chrome shafts and are owner serviceable. Coil-over kit (AFC20135C) included.

Dirt Late Model Applications

| Front Shock Absorbers | 6" Stroke | 7" Stroke |
|-----------------------------|-----------|------------|
| Standard Front, 3-6/3-6 | AFC6260 | AFC6270 |
| High Speed Rebound, 3-6/4-8 | - | AFC6270HSR |
| Slick Track, 3-6/4-8 | - | AFC6270S |
| RF Tie Down, 3-6/5-12 | - | AFC6270SX2 |

| Rear Shock Absorbers | 8" Stroke | 9" Stroke |
|-----------------------|-----------|-----------|
| Swing Arm, 3-6/3-6 | AFC6280SA | - |
| LR On 4-Link & Others | - | AFC6290LR |
| RR On 4-Link & Others | - | AFC6290RR |
| Slick Track, 3-6/3-6 | - | - |

Pavement Late Model (Big Bar/Soft Spring) Applications

| Description | 7" Stroke | 9" Stroke |
|------------------------|---------------|--------------|
| 3-6 Comp./4-8 Rebound | AFC62736-48Z | AFC62936-48Z |
| 3-6 Comp./9-14 Rebound | AFC62736-914Z | - |

SILVER



Track Pak 62 Series Shock Absorber Packages

Take the guesswork out of shock absorber selection. Each package includes a set of four application specific shock absorbers and four coil-over kits (AFC20135C).

| Part No. | Description |
|--------------|--------------------------------------|
| AFC6200-168 | Dirt Late Model, Swing Arm |
| AFC6200-179 | Dirt Late Model, 4-Link |
| AFC6200-179S | Dirt Late Model, 4-Link, Slick Track |
| AFC6200-279 | Pavement Late Model |

TRACKPAK



Aluminum Body Double Adjustable 37 Series Shock Absorbers

Twin tube, aluminum threaded big body shocks for dirt late models are double adjustable for maximum performance. Precise, consistent and repeatable, shocks offer exceptional traction. Coil-over kit (AFC20135C) must be purchased separately.

| Part No. | Description | Stroke | Valving | Comp. Length | Extended Length |
|------------|----------------------------|--------|---------|--------------|-----------------|
| AFC3770 | Standard Front | 7" | Adj. | 13.18" | 20.10" |
| AFC3790L | Left Rear, 4-Link | 9" | Adj. | 15.18" | 24.10" |
| AFC3790LRF | Left Rear In Front, 4-Link | 9" | Adj. | 15.18" | 24.10" |
| AFC3790RZ | Right Rear | 9" | Adj. | 15.18" | 24.10" |
| AFC3790SA | Rear, Swing Arm/Z-Link | 9" | Adj. | 15.18" | 24.10" |



Track Pak 13 Series Shock Absorber Package AFCEDGE3-P

Take the guesswork out of dirt late model shock set-up. Each shock in the Track Pak 13 Series package has been engineered to deliver maximum performance under specific track conditions. Aluminum threaded body, R-Series shock absorbers provide specific rebound and compression dampening at both low and high speed shaft velocities. Engineered for four-link, Watts or Z-link suspensions, 10-shock package includes (2) E327 (LF/RF), (1) E329 (LR), (1) E339 (RR), (1) E379 (LR), (1) E307 (LF), (1) E309 (LR), (1) E319 (RR), (1) E357 (RF) and (1) E359 (RR). Coil-over kit (AFC20135) must be purchased separately.



Aluminum Big Body Shock Absorbers

Threaded, fixed valve shocks fit dirt late models, including those with swing arm and 4-link suspensions. Dyno tested, rebuildable and revalvable. Coil-over kit (AFC20135) must be purchased separately.

| Part No. | Stroke | Valving | Comp. Length | Extended Length |
|---|--------|---------|--------------|-----------------|
| 13 Series Non-Adjustable Twin Tube Threaded Body | | | | |
| AFC1373T | 7" | 3 | 13.32" | 20.25" |
| AFC1373-5T | 7" | 3-5 | 13.32" | 20.25" |
| AFC1373-7T | 7" | 3-7 | 13.32" | 20.25" |
| AFC1374T | 7" | 4 | 13.32" | 20.25" |
| AFC1374-6T | 7" | 4-6 | 13.32" | 20.25" |
| AFC1375T | 7" | 5 | 13.32" | 20.25" |
| AFC1375-3T | 7" | 5-3 | 13.32" | 20.25" |
| AFC1375-6T | 7" | 5-6 | 13.32" | 20.25" |
| AFC1376T | 7" | 6 | 13.32" | 20.25" |
| AFC1376-2T | 7" | 6-2 | 13.32" | 20.25" |
| AFC1376-4T | 7" | 6-4 | 13.32" | 20.25" |
| AFC1390T | 9" | Dummy | 15.32" | 24.25" |
| AFC1393T | 9" | 3 | 15.32" | 24.25" |
| AFC1393-5T | 9" | 3-5 | 15.32" | 24.25" |
| AFC1394T | 9" | 4 | 15.32" | 24.25" |
| AFC1394RTT* | 9" | 4 RT | 15.32" | 24.25" |
| AFC1394-0T | 9" | 4-0 | 15.32" | 24.25" |
| AFC1394-6T | 9" | 4-6 | 15.32" | 24.25" |
| AFC1395T | 9" | 5 | 15.32" | 24.25" |
| AFC1395-3T | 9" | 5-3 | 15.32" | 24.25" |
| AFC1395-6T | 9" | 5-6 | 15.32" | 24.25" |
| AFC1396T | 9" | 6 | 15.32" | 24.25" |
| AFC1396-0T | 9" | 6-0 | 15.32" | 24.25" |
| AFC1396-2T | 9" | 6-2 | 15.32" | 24.25" |
| AFC1399-3T | 9" | 9-3 | 15.32" | 24.25" |
| 21 Series Non-Adjustable Gas Threaded Body | | | | |
| AFC2173-5 | 7" | 3-5 | 13.81" | 19.71" |
| AFC2173-7 | 7" | 3-7 | 13.81" | 19.71" |
| AFC2174-6 | 7" | 4-6 | 13.81" | 19.71" |
| AFC2175 | 7" | 5 | 13.81" | 19.71" |
| AFC2175-3 | 7" | 5-3 | 13.81" | 19.71" |
| AFC2175-3D* | 7" | 5-3 | 13.31" | 20.03" |
| AFC2175D* | 7" | 5 | 13.31" | 20.03" |
| AFC2193-5 | 9" | 3-5 | 15.81" | 23.71" |
| AFC2194 | 9" | 4 | 15.81" | 23.71" |
| AFC2194-0D* | 9" | 4-0 | 15.31" | 24.03" |
| AFC2194-3D* | 9" | 4-3 | 15.31" | 24.03" |
| AFC2194-5 | 9" | 4-5 | 15.81" | 23.71" |
| AFC2194-6 | 9" | 4-6 | 15.81" | 23.71" |
| AFC2194D* | 9" | 4 | 15.31" | 24.03" |
| AFC2196-2D* | 9" | 6-2 | 15.31" | 24.03" |
| AFC2196-3 | 9" | 6-3 | 15.81" | 23.71" |

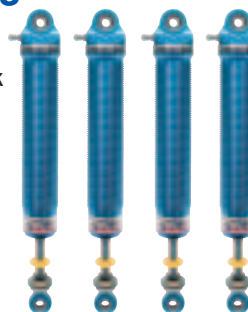


* Left side application with increased shock travel.

† Special valving controls chassis on rough tracks without compromising handling on normal tracks.

Track Pak 21 Series Shock Absorber Package AFC2100-1

Get the right shocks the first time. Engineered for dirt late models with 4-link suspensions, package includes set of four specially selected shock absorbers. Coil-over kit (AFC20135) must be ordered for each shock.





“Silver Series” Steel Body Bulb Shock Absorbers **NEW!**

SILVER

Steel bodied, mono-tube design “Silver Series” shock absorbers utilize a large gas chamber (bulb) to reduce gas pressure gain and increase driver feel and traction. Bound to be popular on IMCA/UMP Modifieds, shocks are manufactured using ultra strong DURox chrome shafts, a low drag seal system and deflection disc, shim stack technology. Owner rebuildable, serviceable and revalvable, shocks include Schrader valves, and are offered with or without a base valve.



| Part No. | Description | Stroke | Valving | Comp. Length | Extended Length |
|-------------|----------------------|--------|---------|--------------|-----------------|
| AFC55-7-5-5 | Base Valve Shock | 7" | 5C-5R | 13.25" | 19.25" |
| AFC55-7-5-3 | Base Valve Shock | 7" | 5C-3R | 13.25" | 19.25" |
| AFC55-7-4-6 | Base Valve Shock | 7" | 4C-6R | 13.25" | 19.25" |
| AFC55-7-3-5 | Base Valve Shock | 7" | 3C-5R | 13.25" | 19.25" |
| AFC55-9-4-4 | Base Valve Shock | 9" | 4C-4R | 15.25" | 23.25" |
| AFC55-9-3-5 | Base Valve Shock | 9" | 3C-5R | 15.25" | 23.25" |
| AFC57-9-9-2 | Non-Base Valve Shock | 9" | 9C-2R | 15.25" | 24.25" |
| AFC57-9-7-2 | Non-Base Valve Shock | 9" | 7C-2R | 15.25" | 24.25" |

Steel Body 23 Series Gas Shock Absorbers

Steel body gas shock absorbers work well on dirt modifieds with swing arm or 4-link suspension. Each shock has a Schrader valve for gas inflation.

| Part No. | Stroke | Valving | Comp. Length | Extended Length |
|-------------|--------|---------|--------------|-----------------|
| AFC2373-5 | 7" | 3-5 | 12.75" | 19.50" |
| AFC2374-5 | 7" | 4-5 | 12.75" | 19.50" |
| AFC2374-6 | 7" | 4-6 | 12.75" | 19.50" |
| AFC2375 | 7" | 5 | 12.75" | 19.50" |
| AFC2375-3 | 7" | 5-3 | 12.75" | 19.50" |
| AFC2393-5 | 9" | 3-5 | 14.75" | 23.50" |
| AFC2394 | 9" | 4 | 14.75" | 23.50" |
| AFC2394RT* | 9" | 4 RT | 14.75" | 23.50" |
| AFC2396-3D† | 9" | 6-3 | 14.75" | 23.50" |
| AFC2397-2D† | 9" | 7-2 | 14.75" | 23.50" |
| AFC2399-2 | 9" | 9-2 | 14.75" | 23.50" |
| AFC2399-2D† | 9" | 9-2 | 14.75" | 23.50" |

* Special valving controls chassis on rough tracks without compromising handling on normal tracks.

† Designed for left side mounting.



Track Pak 23 Series Shock Absorber Packages

Engineered to be correct for dirt modifieds with swing arm or 4-link suspensions, packages include set of four specially selected 23 series shock absorbers.

| Part No. | Description |
|-----------|-------------|
| AFC2300-1 | Base Track |
| AFC2300-2 | Slick Track |
| AFC2300-3 | Rough Track |



Track Pak 24 Series Shock Absorber Packages

Put an end to the guesswork when selecting shock absorbers. Ideal for IMCA modifieds, packages include set of four specially selected 24 series shock absorbers.

| Part No. | Description |
|-----------|-------------|
| AFC2400-1 | Base Track |
| AFC2400-2 | Slick Track |
| AFC2400-3 | Rough Track |



Steel Body 24 Series IMCA Legal Gas Shock Absorbers

Steel body, 24 series gas shocks are approved by the IMCA.

| Part No. | Stroke | Valving | Comp. Length | Extended Length |
|-------------|--------|---------|--------------|-----------------|
| AFC2473-5 | 7" | 3-5 | 12.75" | 19.50" |
| AFC2474-5 | 7" | 4-5 | 12.75" | 19.50" |
| AFC2474-6 | 7" | 4-6 | 12.75" | 19.50" |
| AFC2475 | 7" | 5 | 12.75" | 19.50" |
| AFC2475-3 | 7" | 5-3 | 12.75" | 19.50" |
| AFC2493-5 | 9" | 3-5 | 14.75" | 23.50" |
| AFC2494 | 9" | 4 | 14.75" | 23.50" |
| AFC2494RT* | 9" | 4 RT | 14.75" | 23.50" |
| AFC2496-3D† | 9" | 6-3 | 14.75" | 23.50" |
| AFC2497-2D† | 9" | 7-2 | 14.75" | 23.50" |
| AFC2499-2 | 9" | 9-2 | 14.75" | 23.50" |

* Special valving controls chassis on rough tracks without compromising handling on normal tracks.

† Designed for left side mounting.



Steel Rebuildable 19 Series Big Body Shock Absorbers

Suitable for dirt modifieds with swing arm or 4-link suspension, re-buildable, 19 series shocks have a 2.02" O.D. steel body.

| Part No. | Stroke | Valving | Comp. Length | Extended Length |
|------------|--------|---------|--------------|-----------------|
| AFC1971-9 | 7" | 1-9 | 12.75" | 19.50" |
| AFC1973-5 | 7" | 3-5 | 12.75" | 19.50" |
| AFC1974-6 | 7" | 4-6 | 12.75" | 19.50" |
| AFC1975 | 7" | 5 | 12.75" | 19.50" |
| AFC1975-3 | 7" | 5-3 | 12.75" | 19.50" |
| AFC1976 | 7" | 6 | 12.75" | 19.50" |
| AFC1979-1 | 7" | 9-1 | 12.75" | 19.50" |
| AFC1993 | 9" | 3 | 14.75" | 23.50" |
| AFC1993-5 | 9" | 3-5 | 14.75" | 23.50" |
| AFC1994 | 9" | 4 | 14.75" | 23.50" |
| AFC1994RT* | 9" | 4 RT | 14.75" | 23.50" |
| AFC1995 | 9" | 5 | 14.75" | 23.50" |
| AFC1996-2 | 9" | 6-2 | 14.75" | 23.50" |
| AFC1997-2 | 9" | 7-2 | 14.75" | 23.50" |
| AFC1999-2 | 9" | 9-2 | 14.75" | 23.50" |

* Special valving controls chassis on rough tracks without compromising handling on normal tracks.



Track Pak 19 Series Shock Absorber Packages

An entire package, steel body 19 Series shock absorbers have been thoroughly engineered to work together and provide a serious performance edge. IMCA legal, Track Pak packages take the guesswork out of shock set-up.

| Part No. | Description |
|------------|---|
| AFCEDGE1-P |4-Link/Watts/Z-Link 9-Shock Package, Includes (2) 19E1-LFRF-B (LF/RF), (1) 19E1-RF-HR (RF), (1) 19E1-LF-S (LF), (1) 19E1-RR-B (RR), (1) 19E1-LR-B (LR), (1) 19E1-LRRR-HR (RR), (1) 19E1-RR-S (RR) And (1) 19E1-LR-S (LR) |
| AFCEDGE1-S |Slick Track 4-Shock Package, Includes (1) 19E1-LFRF-B (RF), (1) 19E1-LF-S (LF), (1) 19E1-RR-S (RR) And (1) 19E1-LR-S (LR) |



TECH TIP

Split Valve Shocks

In AFCO part numbers split valve shocks are separated by a dash (compression-rebound). Example: AFC1573-5 shock has a compression of 3 and a rebound of 5.



Steel Sealed 14 Series Big Body Coil-Over Shock Absorbers

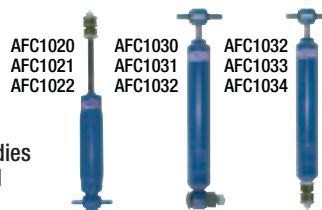
Ideal for dirt modifieds, steel, twin tube shock absorbers have large (2.02" O.D.) sealed bodies to accept coil-overs. Coil-over kit must be purchased separately. Use AFC20125A for 5" sleeve kit, or AFC20125A-7 for 7" sleeve kit.

| Part No. | Stroke | Valving | Comp. Length | Extended Length |
|-----------|--------|---------|--------------|-----------------|
| AFC1473 | 7" | 3 | 12.375" | 19.250" |
| AFC1473-5 | 7" | 3-5 | 12.375" | 19.250" |
| AFC1474 | 7" | 4 | 12.375" | 19.250" |
| AFC1474-6 | 7" | 4-6 | 12.375" | 19.250" |
| AFC1475 | 7" | 5 | 12.375" | 19.250" |
| AFC1475-3 | 7" | 5-3 | 12.375" | 19.250" |
| AFC1476 | 7" | 6 | 12.375" | 19.250" |
| AFC1476-2 | 7" | 6-2 | 12.375" | 19.250" |
| AFC1477 | 7" | 7 | 12.375" | 19.250" |
| AFC1479-1 | 7" | 9-1 | 12.375" | 19.250" |
| AFC1493 | 9" | 3 | 14.375" | 23.250" |
| AFC1493-5 | 9" | 3-5 | 14.375" | 23.250" |
| AFC1494 | 9" | 4 | 14.375" | 23.250" |
| AFC1495 | 9" | 5 | 14.375" | 23.250" |
| AFC1495-3 | 9" | 5-3 | 14.375" | 23.250" |
| AFC1496 | 9" | 6 | 14.375" | 23.250" |
| AFC1497-2 | 9" | 7-2 | 14.375" | 23.250" |



Steel Body Stock Mount Shock Absorbers

Shocks have stock appearing bodies to meet track rules and specialized valving for oval track racing.



| Part No. | Description | Valving | Compressed Length | Extended Length | Mount |
|---|-------------------|---------|-------------------|-----------------|-------|
| GM Full- and Mid-Size, 1970-81 Camaro/Firebird, 1965-86 Ford Full- and Mid-Size, Mercury Montego/Cougar | | | | | |
| AFC1020 | 50/50 Extra Heavy | 7 | 9.375" | 13.375" | Front |
| AFC1021 | 50/50 Heavy | 6 | 9.375" | 13.375" | Front |
| AFC1022 | 80/20 | 7-4 | 9.375" | 13.375" | Front |
| 1955-86 GM Full- and Mid-Size, 1964-88 Malibu/Chevelle/Monte Carlo/Cutlass/Grand Prix/LeMans/Tempest/Skylark/Regal; 1968-79 Nova | | | | | |
| AFC1030 | 50/50 Medium | 5 | 13.00" | 21.00" | Rear |
| AFC1031 | 50/50 Heavy | 6 | 13.00" | 21.00" | Rear |
| AFC1035 | 40/60 | 3-5 | 13.00" | 21.00" | Rear |
| 1970-81 Camaro/Firebird | | | | | |
| AFC1032 | 50/50 Medium | 5 | 14.50" | 22.50" | Rear |
| AFC1033 | 50/50 Heavy | 6 | 14.50" | 22.50" | Rear |
| AFC1034 | 40/60 | 3-5 | 14.50" | 22.50" | Rear |
| 1979-93 Ford Mustang | | | | | |
| AFC1043 | 50/50 Medium | 5 | 13.00" | 21.50" | Rear |

Steel Body Twin Tube Shock Absorbers

Steel body, twin tube shocks fit dirt modifieds with swing arm or 4-link suspensions. Shocks are offered in small or big body designs.

| Part No. | Stroke | Valving | Comp. Length | Extended Length |
|--|--------|---------|--------------|-----------------|
| 10 Series Non-Adjustable Big Body (2.02" O.D.) | | | | |
| AFC1073 | 7" | 3 | 12.75" | 19.50" |
| AFC1074 | 7" | 4 | 12.75" | 19.50" |
| AFC1074-6 | 7" | 4-6 | 12.75" | 19.50" |
| AFC1075 | 7" | 5 | 12.75" | 19.50" |
| AFC1075-3 | 7" | 5-3 | 12.75" | 19.50" |
| AFC1079-1 | 7" | Damper | 12.75" | 19.50" |
| AFC1093 | 9" | 3 | 14.75" | 23.50" |
| AFC1093-5 | 9" | 3-5 | 14.75" | 23.50" |
| AFC1094 | 9" | 4 | 14.75" | 23.50" |
| AFC1095 | 9" | 5 | 14.75" | 23.50" |
| 12 Series Sealed Body Fixed Bearing Big Body (2.02" O.D.) | | | | |
| AFC1273FB | 7" | 3 | 12.375" | 19.250" |
| AFC1274FB | 7" | 4 | 12.375" | 19.250" |
| AFC1275FB | 7" | 5 | 12.375" | 19.250" |
| AFC1275-3FB | 7" | 5-3 | 12.375" | 19.250" |
| AFC1276FB | 7" | 6 | 12.375" | 19.250" |
| AFC1276-2FB | 7" | 6-2 | 12.375" | 19.250" |
| AFC1276-4FB | 7" | 6-4 | 12.375" | 19.250" |
| AFC1279-1FB | 7" | 9-1 | 12.375" | 19.250" |
| AFC1293FB | 9" | 3 | 14.375" | 23.250" |
| AFC1293-5FB | 9" | 3-5 | 14.375" | 23.250" |
| AFC1294FB | 9" | 4 | 14.375" | 23.250" |
| AFC1295FB | 9" | 5 | 14.375" | 23.250" |
| 15 Series Non-Adjustable Small Body (1.64" O.D.) | | | | |
| AFC1551 | 5" | 1 | 10.70" | 17.70" |
| AFC1554 | 5" | 4 | 10.70" | 17.70" |
| AFC1562 | 6" | 2 | 11.50" | 17.50" |
| AFC1563 | 6" | 3 | 11.50" | 17.50" |
| AFC1564 | 6" | 4 | 11.50" | 17.50" |
| AFC1573-5 | 7" | 3-5 | 12.70" | 19.70" |
| AFC1574 | 7" | 4 | 12.70" | 19.70" |
| AFC1575 | 7" | 5 | 12.70" | 19.70" |
| AFC1575-3 | 7" | 5-3 | 12.70" | 19.70" |
| AFC1576 | 7" | 6 | 12.70" | 19.70" |



Quarter Midget Shocks and Coil-Over Springs Aluminum Body 51 Series Shock Absorbers **NEW!**

51 Series quarter midget shocks utilize Deflective Disc, Shim Stack Technology to provide the lowest rod pressure in the industry. Aluminum-bodied, owner rebuildable shocks have chrome shafts and a low drag seal system. Shocks include a coil-over kit.

| Part No. | Description | Valving |
|------------|--------------------------|---------|
| AFC5133030 | Progressive Valved Shock | 3C-3R |
| AFC5133040 | Progressive Valved Shock | 3C-4R |
| AFC5134040 | Progressive Valved Shock | 4C-4R |

Shock Absorber Accessories **NEW!**

AFCO offers a full selection of shock absorber rebuild kits and maintenance tools.

| Part No. | Description | AFCA7007500171 |
|---------------|--|----------------|
| AFC51QMR | Shock Absorber Rebuild Kit, 51 Series | |
| AFC20107 | Shock Absorber Drip Cup, 51 Series | |
| AFC550010381 | Shock Absorber Extra Long Rod End, 51 Series | |
| AFCA700500171 | Shock Absorber Wrench, 51 Series | |

1-5/8" Dia. Coil-Over Springs **NEW!**

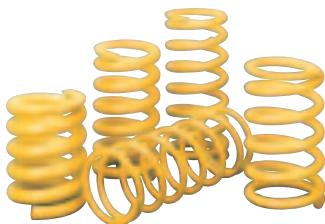
Lightweight, 1-5/8" dia. x 4" tall springs offer maximum stroke and consistent rates throughout the full range of travel. Springs have a lifetime guarantee to maintain free height within 2%.

| Part No. | Rate |
|------------|----------|
| AFC29065-4 | 65 Lbs. |
| AFC29075-4 | 75 Lbs. |
| AFC29085-4 | 85 Lbs. |
| AFC29095-4 | 95 Lbs. |
| AFC29105-4 | 105 Lbs. |
| AFC29115-4 | 115 Lbs. |
| AFC29125-4 | 125 Lbs. |
| AFC29135-4 | 135 Lbs. |
| AFC29145-4 | 145 Lbs. |



Conventional Coil Springs

Precisely wound, yellow coated AFCO springs are 100% quality checked, inspected and engraved with the specified rate.



| Rate | Front Springs | | Rear Springs | | |
|------|---------------------|-------------------------|------------------|------------------|------------------|
| | 5" O.D. 9-1/2" Tall | 5-1/2" O.D. 9-1/2" Tall | 5" O.D. 11" Tall | 5" O.D. 13" Tall | 5" O.D. 16" Tall |
| 100 | - | - | AFC25100 | - | - |
| 125 | - | - | AFC25125 | AFC25125-1 | AFC25125-2 |
| 150 | - | - | AFC25150 | AFC25150-1 | AFC25150-2 |
| 175 | - | - | AFC25175 | AFC25175-1 | AFC25175-2 |
| 200 | - | - | AFC25200 | AFC25200-1 | AFC25200-2 |
| 225 | - | - | AFC25225 | AFC25225-1 | AFC25225-2 |
| 250 | - | - | AFC25250 | AFC25250-1 | AFC25250-2 |
| 275 | - | - | AFC25275 | AFC25275-1 | - |
| 300 | - | - | AFC25300 | AFC25300-1 | - |
| 325 | - | - | AFC25325 | AFC25325-1 | - |
| 350 | - | - | AFC25350 | AFC25350-1 | - |
| 375 | - | - | - | AFC25375-1 | - |
| 400 | - | - | AFC25400 | AFC25400-1 | - |
| 500 | AFC20500 | AFC20500-1 | - | - | - |
| 550 | AFC20550 | AFC20550-1 | - | - | - |
| 600 | AFC20600 | AFC20600-1 | - | - | - |
| 650 | AFC20650 | AFC20650-1 | - | - | - |
| 700 | AFC20700 | AFC20700-1 | - | - | - |
| 750 | AFC20750 | AFC20750-1 | - | - | - |
| 800 | AFC20800 | AFC20800-1 | - | - | - |
| 850 | AFC20850 | AFC20850-1 | - | - | - |
| 900 | AFC20900 | AFC20900-1 | - | - | - |
| 950 | AFC20950 | AFC20950-1 | - | - | - |
| 1000 | AFC21000 | AFC21000-1 | - | - | - |
| 1050 | - | AFC21050-1 | - | - | - |
| 1100 | AFC21100 | AFC21100-1 | - | - | - |
| 1150 | - | AFC21150-1 | - | - | - |
| 1200 | - | AFC21200-1 | - | - | - |
| 1300 | - | AFC21300-1 | - | - | - |
| 1400 | - | AFC21400-1 | - | - | - |

Stock-Appearing Conventional Springs

Specifically engineered for oval track classes requiring stock-appearance, black painted springs. Rear springs are flat machined on one end and have a "pigtail" on the other.

- Part No. Rate**
5-1/2" O.D. x 11" Tall Front
1973-88 Chevelle/Malibu/Cutlass/Regal/Grand Prix;
1970-81 Camaro/Firebird
AFC21000-6..... 1000 lbs.
AFC21100-6..... 1100 lbs.
5-1/2" O.D. x 12" Pigtail Rear
1973-88 Chevelle/Malibu/Cutlass/Regal/Grand Prix
AFC25200SS 200 lbs.



Adjustable Spring Spacer AFC20191

Designed for use on stock stub cars fitted with 5" or 5-1/2" O.D. coil springs, spacer allows up to 2" of height adjustment. Trim sleeve for initial fit prior to welding.



Detented Lightweight Weight Jack System

Detented weight jack system eliminates the need for a jam nut, speeding up wedge adjustments. The weight jack plate utilizes a stainless steel ball, spring and set screw, which prevent the plate from turning when racing.

- Part No. Description**
AFC20193D..... Detented Upper Plate
AFC20194-8D..... Lightweight Jack Bolt, 1-1/2 lbs., 8" Length
AFC20194-11D..... Lightweight Jack Bolt, 2 lbs., 11" Length
AFC20195LW..... Lightweight Spring Cup



Mini Springs

Mini springs have a 4-1/2" free height and are used in spring-loaded third links, spring rods and Panhard bars.

- Part No. Rate**
AFC27065 650 lbs.
AFC27090 900 lbs.
AFC27105 1050 lbs.
AFC27120 1200 lbs.
AFC27160 1600 lbs.
AFC27200 2000 lbs.



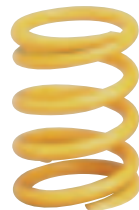
6th Coil Spring AFC26400-1

Mini, 1-3/8" O.D. x 3" tall spring has a 400 lb. rate.

5" IMCA Torque Link Springs

Torque link springs, which are 6-5/8" tall for modifieds, allow necessary stroke lengths and will maintain proper height and rate for life.

- Part No. Rate**
AFC270600 600 lbs.
AFC270800 800 lbs.
AFC270900 900 lbs.
AFC271050 1050 lbs.
AFC271200 1200 lbs.
AFC271450 1450 lbs.
AFC270000PR Progressive
AFC270001 Progressive 600-2,500



"Three Stage" Torque Link AFC21207X **NEW!**

Adjustable "Three Stage"

torque link features a progressive design for the ultimate in torque control and traction. Torque is initially absorbed by the coil spring to provide forward bite, and as engine torque increases, the poly bushings engage to increase torque to the rear tires. The twin shaft design allows the engine side and braking side to operate independently, allowing corner entry and exit to be tuned separately. The engagement point of the poly bushings may be adjusted independently from the coil spring to allow for changing track conditions.



Torque Link Brackets For Ford 9" AFC20407 **NEW!**

Designed for popular Ford 9" rears, laser-cut steel brackets use a "forward mount" design that offers increased pull bar angle and forward bite during axle wrap-up and chassis lift. Brackets include an 8° pinion angle, allowing torque link to be mounted 4" ahead and 12" above axle centerline.

